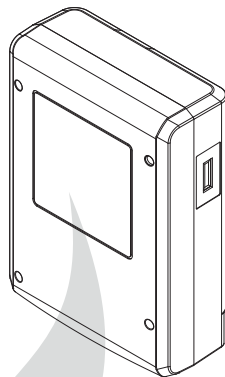


Saunabus Soundmodul



SBM-S 30
SBM-S 30 BT

EN

Installation and operation manual

Made in Germany

CE



English

contents

General information	3
Delivery scope	5
Technical data.....	5
Assembly	6
Electrical connection and equipment	7
Connection diagram	7
Supported formats	8
Operation sound	10
Recycling	12
Service Address:.....	12
Guarantee	13
General Terms and Conditions of Service.....	13

Dear customer,

You have purchased a high-quality electronic device that you will enjoy for many years. This module was designed and tested in compliance with the current European safety standards and was produced in the manufacturer's factory in compliance with the quality standard DIN EN ISO 9001:2008.

These assembly and operating instructions have been drawn up for your information. Please read the **important information** and the information about the electrical connection through carefully.

Appropriate use

This module is only suitable for use or as an expansion of the sauna control devices Emo-Touch II+, Emotec D+H in conjunction with a sauna system or steam bath cabin.


Any other use over and above the intended purpose is considered inappropriate! Compliance with the standard operation, maintenance and repair conditions is also an element of appropriate use.


The manufacturer cannot be held liable for deviating, unauthorized alterations and any resulting damages: the initiator of these changes bears the full risk.


General information

Check first that the module is undamaged on delivery. Any transport damage should be immediately reported to the freight forwarder delivering the goods or you should contact the company that shipped the goods.

General Safety Regulations

- This device can be used by children aged 8 and above or by persons with physical, sensory, or mental disabilities, or who have inadequate experience and knowledge, if they are instructed or initially supervised in the use of the device and the associated risks. Children may not play with this device. **Children** may not clean or service the device without being supervised by an instructed adult.
- **Children** should be supervised to ensure that they do not play with the device.
-  Only qualified electricians may install the device.
- You must comply with the regulations of your electrical supplier and applicable VDE regulations (DIN VDE 0100).

-  **Caution, risk of fatal injuries:** Never carry out repairs or installation work yourself. Only a qualified technician may remove the housing cover.
- The system must be completely disconnected from the mains supply before carrying out any installation work or repairs, i.e. switch off fuses and master switch.
- The safety and installation information provided by the sauna stove manufacturer must be observed.
- Please also observe the information and instructions provided by the cabin manufacturer.

-  If control units with remote control options* are used, protection against activation when the heater is covered is required. (e.g. cover protection Type 1-5 or S-Guard).

**Telecontrol = setting up, controlling or adjusting a unit by a command that can be given out of view of the unit by means of transfer media such as telecommunication, audio technology or bus systems. (this also includes weekly timers)*

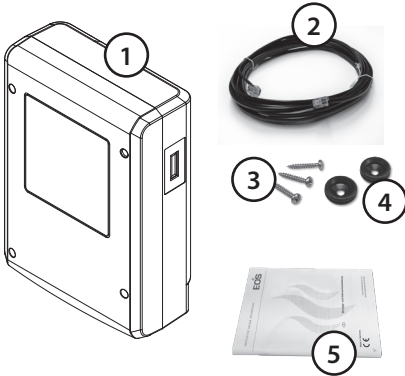
 **Caution!**

Dear Customer, In compliance with the valid regulations, only qualified electricians from an authorised electrician company may connect the sauna stove and the sauna control unit to the power supply.

We therefore remind you that, in case of a warranty claim, you will need to provide a copy of the authorised electrician company's invoice.

Delivery scope

1. Main unit, wall mounting
2. Link cable 6P6C sauna bus 1 m
3. Plastic bag with 3 mounting screws 4 x 25 mm.
4. 2 cable glands
5. 1 installation and operating guide



Caution!



Remove the mains plug before opening the lid of the casing!

Technical data

Rated voltage:	230 V 1 N AC 50Hz
Power connection:	3 m mains cord with „Shuko“ type earthed plug
Power consumption:	max. 35 W
Casing:	wall-mounting, Emotec design
Operation:	Via control panel Emotec D/H, Emotouch II+ series
Inputs:	USB Type-A connector (on the floor of the casing) 3.5mm jack socket for NF Audio (in the casing) SD card slot (in the casing) Bluetooth (only SBM-S 30 BT)
Data connection:	EOS sauna bus (in the casing) Bluetooth – max. 10 m range
Outputs:	2 x loudspeakers stereo
Output:	2 x 15 W Sinus
Output impedance:	4 - 8 Ohm
Ambient temperature:	-10°C to +35°C
Storage temperature:	-20°C to +60°C
Dimensions:	270 x 190 x 90 mm (HxWxD)

Installation

The module may only be mounted outside the cabin. Possible assembly points are the outer wall of the cabin or the equipment room. Installation on the cabin ceiling is also possible, if adequate ventilation is ensured. If empty ducts for electrical installations are in place, the position of the module is determined by these. Please follow the instructions below for installation:

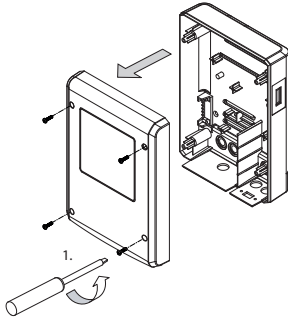


Fig. 1



Caution!



Remove the mains plug before opening the lid of the casing!

- Remove the upper part of the casing. To do this, completely remove the 4 screws and then remove the upper part. (Fig. 1).
- The boreholes for the supplied wood screws 4 x 25 mm are attached according to the dimensions stated in Fig. 2.
- Turn one of the wood screws into the upper middle hole. The load unit is attached to this screw. The screw should therefore protrude by about 3 mm (see detail in Fig. 2).

Fig. 2

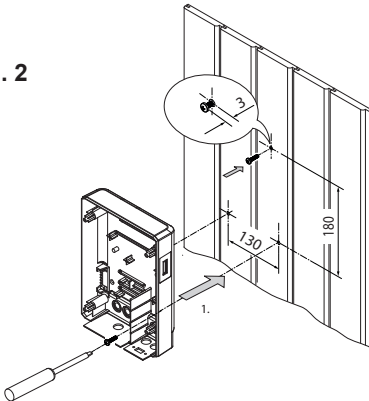
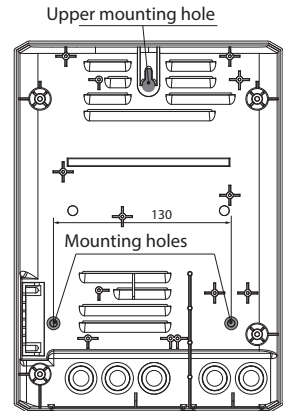


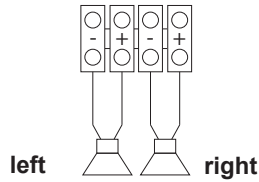
Fig. 3



- Hook the module onto the screw that protrudes 3 mm from the upper attachment hole.
- Place the supplied rubber sleeves into the openings of the lower part of the casing (optionally, from below or behind) and then feed the connecting cable through these openings.
- Screw the lower part of the casing into the two lower boreholes so that it sits tightly against the cabin wall (Fig. 2).

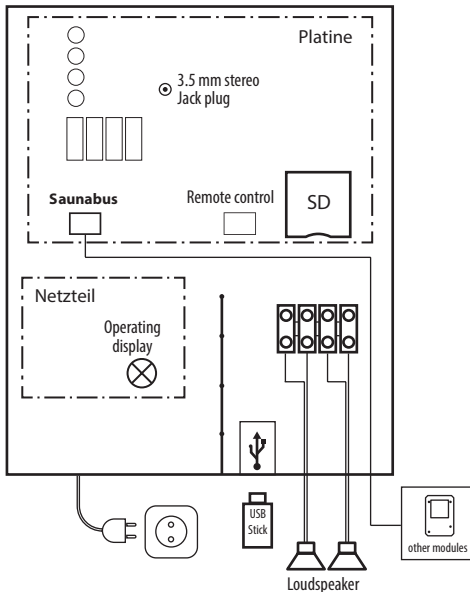
Electrical connection and equipment

- First ensure that the mains plug has been disconnected.
- Use the supplied cable to connect to one of the other free sauna bus sockets on the sauna control system or another module.
- Connect the loudspeakers.



- Use the cable sleeves to protect the electronics from splash-water.
- We advise making a cross-shaped incision into the membrane of the cable sleeve to feed through the sound module socket or to use the included cable glands.
- Use the screws to screw in the upper part of the casing again.
- Reconnect the earthed plug.
- Switch on the control system.

Connection diagram



Caution:

Cross sections and connecting cable safeguards to DIN/VDE 0100



Caution!

Dear customer,

In compliance with the valid regulations, only a qualified electrician from an authorised electronics company may connect the module. We would like to remind you that, in case of a warranty claim, you will need to provide a copy of the authorised electronics company's invoice.

Supports music file formats on the SD card and USB:

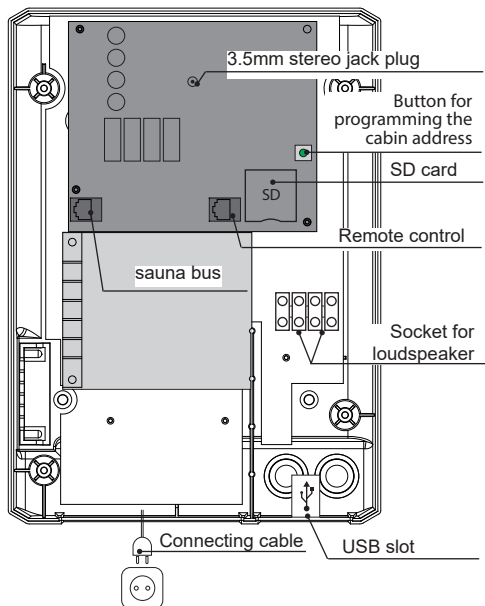
- MPEG 1, MPEG 2, MPEG 2.5
- MP3 (MPEG-2 Audio Layer III)
- Layer 1, Layer 2, Layer 3
- WMA 9
- MPEG AAC



Caution!



Remove the mains plug before opening the lid of the casing!



- Supports music playback from the following media
- NF-input (can be accessed after opening the casing)
- SD card (can be accessed after opening the casing)
- USB sticks
- Bluetooth (only for SBM-S BT)

The basic volume returns to the default setting after the media is changed.

Programming the cabin address

1. Press button >4s – to start the programming mode; the red light flashes approx. 150ms on, 500ms off
2. Press button briefly (> 0.5s) – the green LED shows the set address via the number of flashes; the switching times: approx. 400ms on, 400ms off
3. The next address is selected every time the button is pressed.
4. As the control unit is usually supplied with address 1, pressing the button for the first time after starting the programming mode sets the address 2; the green LED flashes twice.
5. Address 1 follows address 8
6. the programming mode is automatically quit if no button is pressed for more than 10s. The new address is thereby permanently saved.

Sauna = Address 1 (basic settings)
Steam bath = Address 2
(absolutely essential in Steam bath operational)

Priorities:

Bluetooth > USB > SD > Jack 3.5mm

Setup for Bluetooth connection (only SBM-S 30 BT)

With the sound module SBM-S 30 BT you can retrieve and playback music from remote BT-enabled devices (e.g. smartphone, table).

The Bluetooth connectivity in the sound module is by default active.

To set up the BT connection activate the BT connectivity on your remote device and conduct the search for new BT devices. The maximum range is 10 m by free sight. Please note that walls and other obstacles can reduce the action range.

The Sound Modul should be displayed in the list of new devices as „EOS-BT-xxxx“ (xxxx stands for a random combination of letters and digits).

Select the sound module and pair your device. No PIN code is required for pairing. By successful pairing the BT symbol will appear on the control unit display (by Emotec in top right corner, by Emotouch II+ in the sound setting sub-menu). Only one device may be paired to the sound module at a time.

Notice: If you wish to pair the sound module to another device make sure to interrupt the already established BT connection (e.g. switch off BT connectivity on the first device).

By BT connection the music playback may be controlled both from the control unit (sound module) and from the remote device.

Please attention that the loudness setting in your remote device is decisive. We recommend to set the loudness at the middle level. Later it may be adjusted to your liking. Loudness setting at the control unit is secondary.

The BT function in the sound module may be deactivated in the setup menu via the control unit. Contact your local EOS dealer or EOS service for further information.

Troubleshooting

1. BT connection fails

- check the remote device, switch the BT off and on. Repeat the search and pairing.
- make sure that no other remote device is already paired to the sound module.
- check that the BT connectivity in the sound module is enabled.
- make sure that the remote device is within reach of BT signal.

2. Music loudness is too low

- check the loudness setting in your remote device. We recommend to set it to the middle level.
- check the loudness setting in the sound module (via control unit, sound settings menu).

3. No playback

- try alternative connections (Bluetooth, SD-card, USB connector)
- by BT please check that the remote device is not too far away from the sound module. Room walls may greatly reduce the signal strength. Signal range (> 10 m) also depends on the remote device.
- check if the selected music has the compatible for playback format.

4. Sound module is not recognized by the control unit.

- check the firmware version in the control unit (settings > technical data > firmware). If necessary conduct an update (up-to-date firmware is available at eos-sauna.de).
- check that the sound module has been correctly programmed for the designated control unit (digital ID should be set to 1 for sauna and to 2 for steam room control units).

Operating principle

The functions (e.g. light) can be activated or deactivated by briefly tipping the user interface. Pressing for a longer period (>3 sec.) will take you to the available settings for this function.



Operate by touching the display either briefly or for longer.

For many icons, touching the symbol once will highlight it and an information text is displayed. Touching again activates the function.



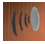
Back

Press in any of the submenus to return to the main screen, the previous menu or the previous selection.

Operation sound

EmoTouch II+



To switch on the sound, brief touch the loudspeaker  (EmoTouch). Touching for a longer period opens up the sound settings.



Back



Play

Title text is displayed (USB, SD-Card)

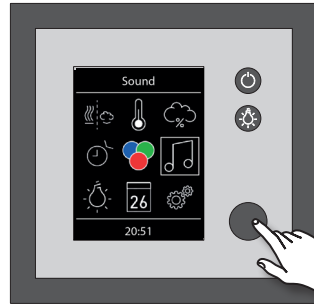


Forward

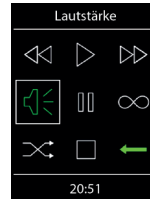


Break

Emotec D/H



Select the sound symbol in the menu (Emotec) and press the encoder. You will enter the sound settings menu.



Stop



Random



Sound - loudspeaker setting

Volume at SBM-S can be set from 0-32

Volume at SBM-S BT, is defined by the BT module, current max. is 16

Notice for operation via Bluetooth connection (only SBM-S 30 BT)

By Bluetooth connection you may control the music playback at your remote device or at your control unit at the same time. The last setting applies.

Primary loudness should be selected at the remote device. We recommend to set it at first to the middle level and then to adjust it to your liking. The loudness setting at the control unit (sound module side) is secondary.

If you set the loudness at the control unit to the max level and it is still too low the reason is usually in the too low setting at the remote device.

Only one remote device may be paired to the sound module.

Music control at the control unit is the same by all connection types.

BT connectivity of the sound module may be disabled. Please contact your EOS dealer or EOS service for more information.

No music files will be copied to the sound module during playback via BT (streaming type).

Service Address:

EOS Saunatechnik GmbH
Schneiderstriesch 1

35759 Driedorf, Germany

Tel: +49 (0)2775 82-514

Fax: +49 (0)2775 82-431

servicecenter@eos-sauna.de

www.eos-sauna.de

Please keep this address in a safe place together with the installation guide.

To help us answer your questions quickly and competently please provide the information printed on the type shield including the model, item no. and serial no., in all inquiries.

Equipment commissioning date:

Stamp and signature of the authorized electrician:

General Terms and Conditions of Service

I. Scope

Unless otherwise agreed in writing in a specific case, these terms and conditions of service shall apply to service operations, including examining and repairing complaints. All our existing or future legal relationships shall be governed solely by the following terms and conditions of service. Our recognition of any conflicting terms and conditions of the Ordering Party shall be conditional upon our having given our express written consent to their applicability. We hereby expressly object to any terms and conditions of the Ordering Party contained in its General Terms and Conditions of Business or order confirmation. If order confirmations or deliveries are accepted without reservation, this shall not be deemed to constitute recognition of such terms and conditions. Any ancillary agreements or amendments must be confirmed in writing.

II. Prices and Payment Terms

The Ordering Party shall bear the following costs in connection with the service operation:

- Disassembly/assembly and electrical (de-) installation
- Transportation, postage and packaging
- Function testing and troubleshooting including inspection and repair costs

There shall be no third-party billing.

III. Performance Obligations / Ordering Party's Cooperation

The Ordering Party shall provide free-of-charge assistance to the manufacturer in carrying out the service operation.

In the case of a warranty claim, the manufacturer shall make the replacement parts necessary for the service available to the Ordering Party free of charge.

IV. Service Visit by the manufacturer

In the event that it is essential that a manufacturer employee carry out the service operation on site, this must be agreed in advance. Where the main reason for the service call is not the fault of the manufacturer, any costs incurred shall be recharged to the Ordering Party after the service visit.

V. Liability

The manufacturer shall assume liability in accordance with the currently applicable statutory regulations. The packaging for all of our products is designed for the shipping of individually packed goods (pallet). We expressly point out that our packaging is not suitable for individual

shipments via parcel post. The manufacturer shall accept no liability for damage incurred as a result of improper packaging in an individual shipment.

VI. Manufacturer's Warranty

The manufacturer's warranty shall apply only in the event that installation, operation and maintenance have been carried out in accordance with the manufacturer's specifications contained in the assembly instructions and instructions for use.

- The warranty period shall commence from the date on which proof of purchase is provided and shall be limited, in principle, to 24 months.
- Warranty services shall be performed only if the proof of purchase relating to the equipment can be presented.
- Any and all warranty claims shall become void if modifications are made to the equipment without the manufacturer's express consent.
- Any warranty claim shall likewise become void in the case of defects that arise due to repairs or interventions made by unauthorized persons or due to improper use.
- In the case of warranty claims, the serial and article numbers must be indicated together with the designation and a meaningful description of the fault.
- This warranty shall cover defective equipment parts, with the exception of normal wear parts. Wear parts shall include, among other things, light sources, starters, gas or oil pressure dampers as well as acrylic glass panes, tubular heating elements and sauna heater stones.
- Only original replacement parts may be used within the warranty.
- Service visits by outside companies shall require a written order to be issued by our service department.
- The equipment in question shall be sent to our service department by the Ordering Party and at its expense.
- Electrical assembly and installation work, including in the event of service or replacement, shall be carried out at the Customer's expense and shall not be borne by the manufacturer.

Complaints in respect of our products shall be reported to the specialist trader responsible and shall be exclusively handled via the latter.

The manufacturers General Terms and Conditions of Business, as amended, shall apply in addition to the foregoing terms and conditions of service.