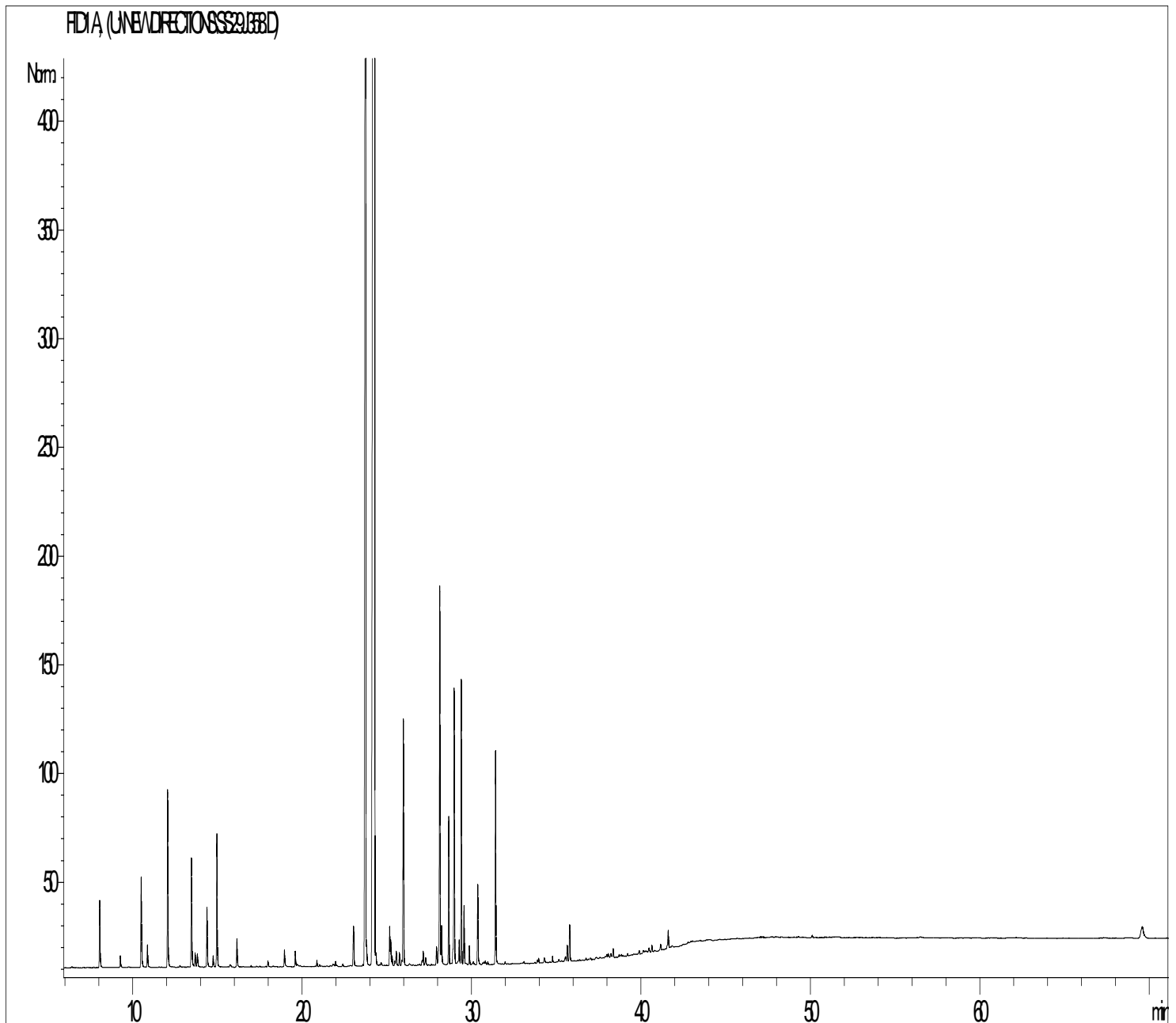


## GCMS ANALYSIS

PRODUCT NAME: CLARY SAGE ESSENTIAL OIL (MOLDOVA) - 11317

DATE: October 28, 2016



*Due to volume turnover, this report is not lot specific. It is representative of the quality of this oil produced by the manufacturer of this product. Specific lots may vary slightly as is the case in natural products.*

## GCMS ANALYSIS

PRODUCT NAME: CLARY SAGE ESSENTIAL OIL (MOLDOVA) - 11317

Peak	RT (min)	Compound name	%
1	8,0	$\alpha$ -PINENE	0,47
2	8,2	$\alpha$ -THUYENE	0,02
3	9,2	CAMPHENE	0,09
4	10,5	$\beta$ -PINENE	0,71
5	10,8	SABINENE	0,17
6	12,0	$\beta$ -MYRCENE	1,21
7	12,7	$\alpha$ -TERPINENE	0,03
8	13,4	LIMONENE	0,86
9	13,7	cis-ARBUSCULON	0,10
10	13,8	1,8-CINEOLE + $\beta$ -PHELLANDRENE	0,11
11	14,4	Cis- $\beta$ -OCIMENE	0,45
12	14,7	Trans-ARBUSCULON	0,08
13	14,9	$\gamma$ -TERPINENE	0,02
14	15,0	Trans- $\beta$ -OCIMENE	0,92
15	15,7	p-CYMENE	0,03
16	16,2	TERPINOLENE	0,22
17	17,9	ALIPHATIC ESTER	0,06
18	18,9	3-HEXEN-1-OL	0,13
19	19,6	2-HEXEN-1-OL	0,12
20	19,7	ALIPHATIC ESTER	0,03
21	20,8	1-OCTEN-3-OL	0,04
22	21,8	$\alpha$ -CUBEBENE	0,03
23	21,9	NERYL OXIDE	0,04
24	22,4	BICYCLOELEMENE	0,02
25	23,0	$\alpha$ -COPAENE	0,36
26	23,7	$\beta$ -BOURBONENE	0,16
27	23,8	<b>LINALOOL</b>	<b>18,80</b>
28	24,2	<b>LINALYL ACETATE</b>	<b>59,24</b>
29	24,3	$\epsilon$ -CADINENE	0,12
30	24,7	SESQUITERPENE	0,03
31	25,1	EPOXYLINALYL ACETATE	0,26
32	25,2	CALARENE	0,17

GCMS ANALYSIS (cont'd.)

PRODUCT NAME: CLARY SAGE ESSENTIAL OIL (MOLDOVA) - 11317

Peak	RT (min)	Compound name	%
33	25,3	SESQUITERPENE	0,07
34	25,5	TERPENIC ACETATE	0,03
35	25,6	$\beta$ -ELEMENE	0,11
36	25,7	$\beta$ -CUBEBENE	0,09
37	25,8	TERPINENE-4-OL	0,03
38	25,9	$\beta$ -CARYOPHYLLENE	1,84
39	27,0	FARNESENE ISOMER	0,04
40	27,2	E- $\beta$ -FARNESENE	0,10
41	27,3	NERYL FORMIATE	0,08
42	27,9	$\alpha$ -HUMULENE	0,14
43	28,1	<b><math>\alpha</math>-TERPINEOL</b>	<b>2,71</b>
44	28,2	BORNEOL	0,31
45	28,6	NERYL ACETATE	0,95
46	28,8	GERANYL FORMIATE	0,09
47	28,9	<b>GERMACRENE D</b>	<b>2,07</b>
48	29,3	$\beta$ -SELINENE	0,22
49	29,4	GERANYL ACETATE	1,79
50	29,5	$\alpha$ -FARNESENE	0,44
51	29,8	$\delta$ -CADINENE	0,13
52	30,0	$\gamma$ -CADINENE	0,01
53	30,1	SESQUITERPENE	0,03
54	30,4	NEROL	0,60
55	30,6	2,6-DIMETHYL-3,5,7-OCTATRIENE-2-OL Z,Z-	0,01
56	30,7	Cis-EPOXY LINALYL ACETATE	0,02
57	30,8	Trans-EPOXY LINALYL ACETATE	0,03
58	30,9	2,6-DIMETHYL-3,5,7-OCTATRIENE-2-OL E,E-	0,02
59	31,4	GERANIOL	1,46
60	34,3	3,7-OCTADIENE-2,6-DIOL, 2,6-DIMETHYL	0,04
61	34,8	2,7-OCTADIENE-1,6-DIOL, 2,6-DIMETHYL	0,04
62	35,1	AROMATIC COMPOUND	0,03
63	35,5	SESQUITERPENIC EPOXIDE	0,06
64	35,6	ISOCARYOPHYLLENE EPOXIDE	0,12

GCMS ANALYSIS (cont'd.)

PRODUCT NAME: CLARY SAGE ESSENTIAL OIL (MOLDOVA) - 11317

Peak	RT (min)	Compound name	%
65	35,8	CARYOPHYLLENE EPOXIDE	0,29
66	38,3	SPATHULENOL	0,08
67	40,4	$\alpha$ -EUDESMOL	0,05
68	40,6	$\beta$ -EUDESMOL	0,05
69	41,1	GERANYL-p-CYMENE Mw=270	0,06
70	41,6	SCLAREOL OXIDE	0,19
71	50,1	PALMITIC ACID	0,02
72	59,6	<b>SCLAREOL</b>	<b>0,38</b>
		<b>TOTAL</b>	<b>99,93</b>