

SAFETY DATA SHEET (SDS)

Version 2.0

Revision Date : April 21,2022

Print Date : March 18, 2023

1. PRODUCT AND COMPANY IDENTIFICATION

Product name	:	Frankincense Essential Oil - Boswellia Serrata
Botanical name	:	Boswellia serrata
INCI name	:	Boswellia Serrata Oil
CAS #	:	97952-72-2
Country of Origin	:	India
EINECS #	:	308-366-6
Product use	:	Domestic and Industrial

2. HAZARDS IDENTIFICATION

Emergency Overview

GHS Classification

Flammable Liquids - Category 3

Aspiration Hazard - Category 1

Skin corrosion/irritation - Category 2

Skin Sensitization - Category 1

Hazardous to aquatic environment - Acute - Category 2

Hazardous to the aquatic environment, long-term hazard - Category 2

GHS Label elements, including precautionary statements



Signal: Warning

Hazard statement(s)

H226	Flammable liquid and vapour.
H304	May be fatal if swallowed and enters airways.
H315	Causes skin irritation.
H317	May cause an allergic skin reaction.
H401	Toxic to aquatic life.
H411	Toxic to aquatic life with long-lasting effects.

Precautionary statement(s)

P261	Avoid breathing dust/fumes/gas/mist/vapours/spray.
P264	Wash hands thoroughly after handling.
P272	Contaminated work clothing should not be allowed out of the workplace.
P280	Wear protective gloves/protective clothing/eye protection/face protection.
P301+P310	IF SWALLOWED: Immediately call a POISON CENTER or doctor/physician.
P302+P352	IF ON SKIN: Wash with plenty of soap and water.
P305+P351+P338	IF IN EYES: Rinse cautiously with water for several minutes. Remove contact lenses if present and easy to do – continue rinsing.
P332+P313	If skin irritation occurs: Get medical advice/attention.
P333+P313	If skin irritation or a rash occurs: Get medical advice/attention.
P337+P313	If eye irritation persists get medical advice/attention.
P363	Wash contaminated clothing before reuse.
P405	Store locked up.
P501	Dispose of contents and container in accordance with local, regional, national and/or international regulation for hazardous wastes.

3. COMPOSITION / INFORMATION INGREDIENTS

Product Name	CAS NO	EC NO	Concentration
Boswellia Serrata Oil	97952-72-2	308-366-6	100 %

4. FIRST AID MEASURES**Eye contact**

Immediately flush eyes with plenty of cool water for at least 15 minutes. Get medical attention if irritation occurs.

Skin contact

Remove contaminated clothing. Wash area with soap and water. If irritation occurs, get medical attention.

Inhalation

If inhaled, removed to fresh air. Get medical attention if symptoms appear.

Ingestion

Wash out mouth with water and give water to dilute, provided person is conscious. Seek medical attention or contact local poison control center.

5. FIRE FIGHTING MEASURES**Suitable extinguishing media**

Foam. Dry Powder. Carbon dioxide.

Unsuitable extinguishing media

Water spray, water jet.

Special protective equipment and precautions for fire-fighters

Wear proper protective equipment. Exercise caution when fighting any chemical fire. Use water spray or fog for cooling exposed containers.

Special hazards arising from the substance or its combustible products

Hazardous decomposition products may be formed at extreme heat or if burned.

Resulting gases

Carbon oxides.

6. ACCIDENTAL RELEASE MEASURES

Personal precautions, protective equipment and emergency procedures.

Equip clean crew with proper protection. Respiratory protection equipment may be necessary.

Environmental precautions

Prevent entry to sewers and public waters. Notify authorities if product enters sewers or public waters.

Methods and materials for containment and cleaning up

Clean up any spills as soon as possible, using an absorbent material to collect it. Use suitable disposal containers.

7. HANDLING AND STORAGE

Precautions for safe handling

No direct lighting. No smoking. Ensure prompt removal from eyes, skin and clothing. Wash hands and other exposed areas with mild soap and water before eating, drinking or smoking and when leaving work. Handle in accordance with good industrial hygiene and safety procedures.

Conditions for safe storage, including any incompatibilities

Provide local exhaust or general room ventilation to minimize dust and/or vapour concentrations. Keep container closed when not in use.

8. EXPOSURE CONTROLS AND PERSONAL PROTECTION

Eyes

Use tightly sealed goggles.

Skin

If skin contact or contamination of clothing is likely, protective clothing should be worn. Use protective gloves.

Respiratory

In case of insufficient ventilation, wear suitable respiratory equipment.

Ingestion

Not for ingestion.

9. PHYSICAL AND CHEMICAL PROPERTIES

Appearance	:	Colorless to pale yellow clear liquid.
Odor	:	Characteristic spicy, balsamic, warm, woody aroma.
Flash point	:	58°C
Relative density	:	0.832 to 0.901 @ 20°C
Solubility (ies)	:	Insoluble in water.
Refractive index	:	1.450 to 1.495 @ 20°C

10. STABILITY AND REACTIVITY

Reactivity

This material presents no significant reactivity hazard.

Chemical stability

Chemically stable.

Conditions to avoid

Incompatible materials, dust generation, strong oxidants.

Incompatible materials

Strong oxidizing agents.

Hazardous decomposition products

Carbon monoxide, oxides of nitrogen, oxides of sulfur, carbon dioxide.

11. TOXICOLOGICAL INFORMATION

Acute toxicity

Not available.

Chronic toxicity

May cause allergic reactions on skin.

Reproductive toxicity

No adverse effects on reproduction are known.

Inhalation

Inhalation of high concentrations of vapor may result in irritation of eyes, nose and throat, headache, nausea, and dizziness.

Skin contact

Adverse skin effects should be prevented by normal care and personal hygiene.

Eye contact

Possible irritation should be prevented by wearing safety glasses.

Ingestion

Low order toxicity causing irritation of the stomach and intestines which results in nausea and vomiting

12. ECOLOGICAL INFORMATION

Ecotoxicity

Toxic to aquatic organisms, may cause long-term adverse effects environment. Avoid any pollution of ground, surface or underground water.

Persistence and degradability

Not available.

Bio - accumulative potential

Not available.

Mobility in soil

Not available.

Other adverse effects

Not available.

13. DISPOSAL CONSIDERATION

Dispose of product in accordance with local, state or provincial and federal regulations. Check with local municipal authority to ensure compliance.

14. TRANSPORT INFORMATION

UN Number

1993

UN proper shipping name

Flammable liquid, n.o.s. (Frankincense oil)

Transport hazard class

3

Packing group

III

US DOT Shipping Description (Land)

1993

Proper shipping name

Flammable liquid, n.o.s. (Frankincense oil)

Class

3

Packaging group

III

IMO-IMDG Shipping Description (Sea)

1993

Proper shipping name

Flammable liquid, n.o.s. (Frankincense oil)

Class

3

Packaging group

III

IATA Shipping Description (Air)

1993

Proper shipping name

Flammable liquid, n.o.s. (Frankincense oil)

Class

3

Packaging group

III

15. REGULATORY INFORMATION

California Proposition 65

•This Product can expose you beta myrcene, which is known to the State of California to cause cancer. For more information go to www.P65Warnings.ca.gov.

•This Product can expose you Estragole, which is known to the State of California to cause cancer. For more information go to www.P65Warnings.ca.gov.

•This Product can expose you methyl eugenol, which is known to the State of California to cause cancer. For more information go to www.P65Warnings.ca.gov.

GHS Hazard Statements

Please refer to section 2.

GHS Precautionary Statements

Please refer to section 2.

16. OTHER INFORMATION

Revision date : April 21,2022

CERTIFICATE OF ANALYSIS

Product : **Frankincense Essential Oil - Boswellia serrata**

Lot No : 11246B10123

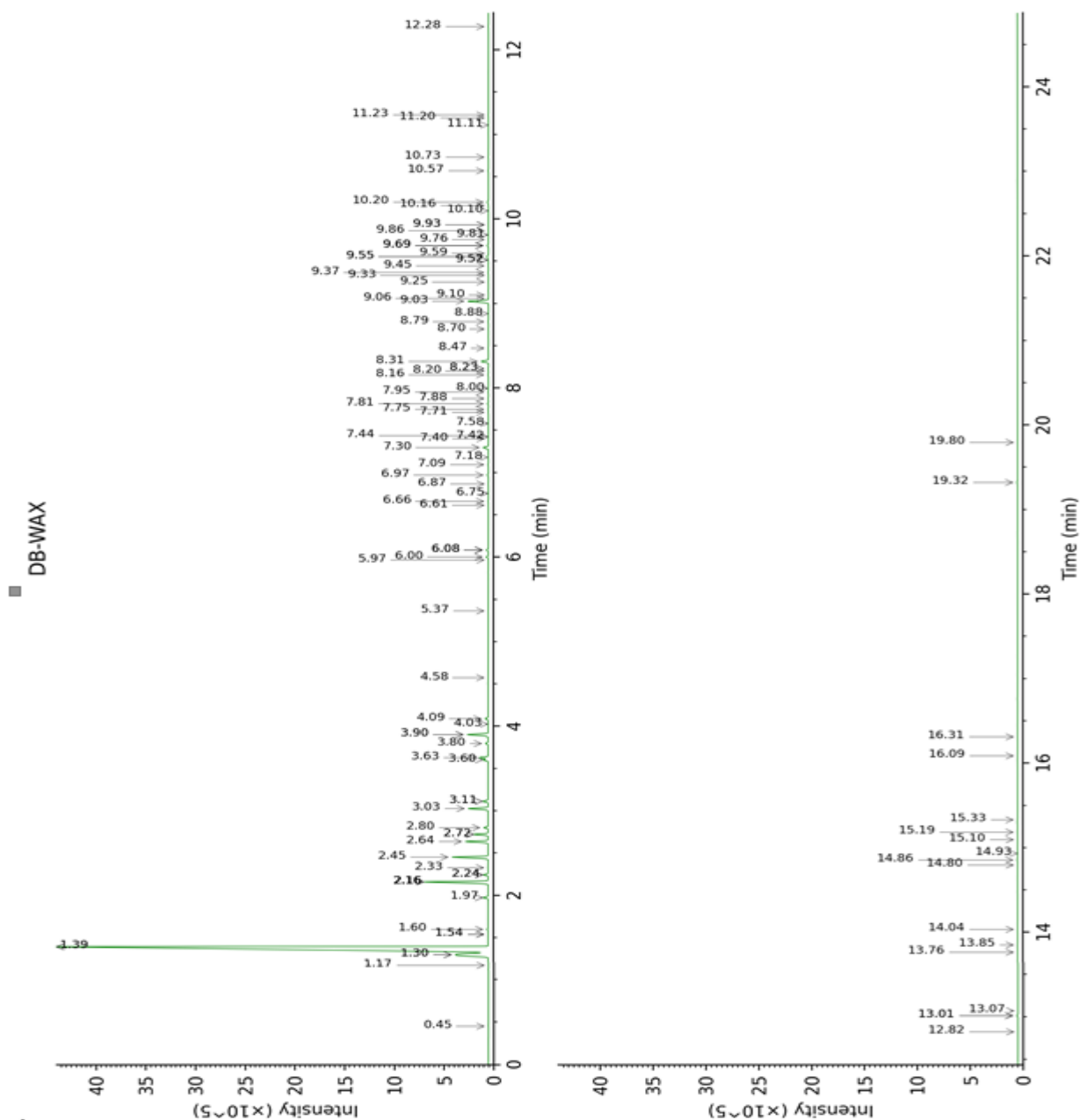
Best Before : October, 2024

<u>Properties</u>	<u>Specifications</u>	<u>Results</u>
Appearance	: Colorless to pale yellow clear liquid.	Complies
Odor	: Characteristic spicy, balsamic, warm, woody aroma.	Complies
Solubility	: Insoluble in water.	Complies
Refractive Index	: 1.45 to 1.49 @ 20°C	1.472
Specific Gravity	: 0.83 to 0.90 @ 25°C	0.851
α -Thujene	: NLT 65%	68.52

GCMS ANALYSIS

PRODUCT NAME: FRANKINCENSE ESSENTIAL OIL - BOSWELLIA SERRATA- 11246

DATE: September 7, 2022



Due to volume turnover, this report is not lot specific, It is representative of the quality of this oil produced by the manufacturer of this product, Specific lots may vary slightly as is the case in natural products,

GCMS ANALYSIS (cont'd.)

PRODUCT NAME: FRANKINCENSE ESSENTIAL OIL - BOSWELLIA SERRATA- 11246

Peak	RT (min)	Compound name	%
1	0.63	(E)-2-Methyl-1,3 pentadiene	0.01
2	1.27	Toluene	0.01
3	2.21	Unknown [m/z 109,43 (28), 124 (28), 41(14), 55 (11), 79 (9),81 (8)...]	tr
4	2.88	Unknown [m/z 93, 91(72), 121 (58), 77 (49), 79 (41), 43 (22), 105(20),107 (20), 41 (18),136 (17), 92 (17)]	0.02
5	3.04	Hashishene	0.10
6	3.08	Tricyclene	0.01
7	3.26	α -Thujene	69.25
8	3.30	α -Pinene	5.61
9	3.44	Unknown [m/z 91, 92(47), 65 (11)... 134 (1)]	0.36
10	3.47*	Camphene	0.08
11	3.47*	α -Fenchene	[0.08]
12	3.56	Thuja-2,4(10)-diene	0.01
13	3.81	3,7,7-Trimethylcyclohepta-1,3,5-triene	0.02
14	3.89†	Sabinene	5.76
15	3.89†	β -Pinene	[5.76]
16	4.04	Pseudolimoneneisomer	0.01
17	4.21	Myrcene	1.08
18	4.26	2-Carene	0.01
19	4.36	α -Phellandrene	1.83
20	4.45	Δ^3 -Carene	3.03
21	4.55	α -Terpinene	0.34
22	4.64	meta-Cymene	0.08
23	4.68	para-Cymene	1.80
24	4.71	Unknown [m/z 109,43 (58), 95 (26)... 137(15)...]	0.17
25	4.75*	β -Phellandrene	2.13
26	4.75*	1,8-Cineole	[2.13]
27	4.75*	Limonene	[2.13]
28	4.88	Unknown [m/z 67, 93(70), 82 (70), 121 (42), 107 (39), 91 (33), 79(28)...]	0.01
29	4.96	(Z)- β -Ocimene	0.44
30	5.07	Unknown [m/z 109, 43 (57), 91 (28), 67 (25), 93 (24), 95 (22),77 (21), 137 (21), 41(17), 79 (14)]	0.06

GCMS ANALYSIS (cont'd)

PRODUCT NAME: FRANKINCENSE ESSENTIAL OIL - BOSWELLIA SERRATA- 11246

Peak	RT (min)	Compound name	%
31	5.12	(E)- β -Ocimene	0.22
32	5.17	Unknown [m/z 109 , 45 (67), 41 (40), 67(39), 81 (33), 79 (27),95 (24), 91 (23), 82(21), 55 (21), 93(20)...]	0.03
33	5.24	γ -Terpinene	0.74
34	5.36	cis-Sabinene hydrate	0.04
35	5.41	Unknown [m/z 79, 93(60), 43 (40), 94 (35), 137 (33), 77 (26), 91(20), 152 (18)]	0.01
36	5.67	Isoterpinolene	0.01
37	5.70*	para-Cymenene	0.27
38	5.70*	Terpinolene	[0.27]
39	5.85	trans-Sabinenehydrate	0.04
40	5.89	Perillene	0.01
41	5.94	Linalool	0.13
42	6.00	Unknown [m/z 119,109 (94), 43 (61), 95 (56), 91 (48), 77 (32),152 (32), 137 (31),134 (24)]	0.01
43	6.11*	Unknown [m/z 109,81 (54), 91 (32), 79(22)...]	0.20
44	6.11*	β -Thujone	[0.20]
45	6.22*	α -Campholenal	0.06
46	6.22*	cis-para-Menth-2-en-1-ol	[0.06]
47	6.29	Unknown [m/z 111,43 (22), 55 (14), 41(12), 110 (11)...]	0.01
48	6.39	allo-Ocimene	0.02
49	6.45	trans-Pinocarveol	0.02
50	6.52	trans-Sabinol	0.06
51	6.58	trans-Verbenol	0.02
52	6.64	para-Menth-3-en-8-ol	0.01
53	6.83	Unknown [m/z 109,43 (75), 137 (46), 67(31), 93 (25)...152 (4)]	0.02
54	6.90	Borneol	0.03
55	6.94	α -Phellandren-8-ol	Tr
56	6.98*	cis-Sabinol	0.07
57	6.98*	Unknown [m/z 95,110 (43), 81 (28), 41(15)... 152 (8)]	[0.07]
58	7.08	Terpinen-4-ol	0.67
59	7.19	meta-Cymen-8-ol	0.01
60	7.23	para-Cymen-8-ol	0.02

GCMS ANALYSIS (cont'd.)

PRODUCT NAME: FRANKINCENSE ESSENTIAL OIL - BOSWELLIA SERRATA- 11246

Peak	RT (min)	Compound name	%
61	7.30	α -Terpineol	0.05
62	7.42	Methylchavicol	1.99
63	7.46	<i>cis</i> - α -Phellandreneepoxide (iPr vs Me)	0.04
64	7.52	Verbenone	0.03
65	7.57	<i>trans</i> -Piperitol	0.02
66	7.75	<i>trans</i> -Carveol	0.02
67	8.12	Carvone	0.02
68	8.22	Piperitone	0.04
69	8.27	<i>trans</i> -Sabinenehydrate acetate	0.01
70	8.36	Linalyl acetate	0.04
71	8.52	Unknown [m/z 109,41 (22), 81 (14), 43(11)... 152 (4)]	0.02
72	8.73	Bornyl acetate	0.04
73	8.98	Thymol	0.01
74	9.10	Carvacrol	0.01
75	9.19	para-Menth-5-en-1,2-diol isomer III	0.06
76	9.46	Unknown [m/z 43, 97(99), 107 (47), 41 (35),55 (30)...]	0.01
77	9.67*	α -Terpinyl acetate	0.05
78	9.67*	α -Cubebene	[0.05]
79	9.96	α -Ylangene	0.02
80	10.03	α -Copaene	0.13
81	10.14*†	1,5-diepi- β -Bourbonene	0.57
82	10.14*†	β -Bourbonene	[0.57]
83	10.24*	β -Cubebene	0.02
84	10.24*	Unknown [m/z 71,109 (99), 85 (66), 111(65), 100 (63), 43(59)...]	[0.02]
85	10.28	β -Elemene	0.01
86	10.32	Sibirene	0.06
87	10.46*	α -Gurjunene	0.12
88	10.46*	Methyleugenol	[0.12]
89	10.61	β -Ylangene	0.09
90	10.74	β -Copaene	0.07

GCMS ANALYSIS (cont'd.)

PRODUCT NAME: FRANKINCENSE ESSENTIAL OIL - BOSWELLIA SERRATA- 11246

Peak	RT (min)	Compound name	%
91	10.88	<i>trans</i> - α -Bergamotene	0.05
92	10.95	Isogermacrene D	0.05
93	11.06	α -Humulene	0.01
94	11.11	allo-Aromadendrene	0.02
95	11.16	<i>cis</i> -Muuro-la-4(15),5-diene	0.02
96	11.40	γ -Muuro-lene	0.05
97	11.44	Germacrene D	0.20
98	11.46	Unknown [m/z 91, 93(92), 105 (71), 77 (69), 79 (68), 133 (63)...204 (32)]	0.12
99	11.52	β -Selinene	0.01
100	11.63	Bicyclogermacrene	0.02
101	11.72	α -Muuro-lene	0.01
102	11.80	δ -Amorphene	0.01
103	11.89*	γ -Cadinene	0.02
104	11.89*	β -Bisabolene	[0.02]
105	12.03	δ -Cadinene	0.16
106	12.35	α -Elemol	0.01
107	12.48	Elemicin	0.02
108	12.96	Guaiol	0.01
109	13.14	4,10-diepi-Guaiol	0.01
110	13.61	Unknown [m/z 204, 161 (97), 59 (87), 189(78), 105 (45)...]	0.01
111	15.29	α -Phellandrenedimer II	0.04
112	15.47	α -Phellandrenedimer III	0.01
113	15.69	α -Phellandrenedimer IV	0.01
114	17.05	(3E)-Cembrene A	0.03
115	17.58	Verticilla-4(20),7,11-triene	0.02
116	18.84	Cembrenol	0.02
117	18.98	Serratol	0.08
		Total reported	99.52%

*: Two or more compounds are coeluting on this column

[xx]: Duplicate percentage due to coelutions, not taken into account in the consolidated total

†: Peaks apexes were resolved, but peaks overlapped and were summed for analysis
tr: The compound has been detected below 0.005% of total signal.

Limitación de Responsabilidad

Consulta toda la información técnica relevante específica del producto antes de su uso. La información contenida en este documento se obtiene de fuentes actuales y confiables. MyLottush, proporciona la información contenida en este documento, pero no garantiza su exhaustividad o precisión. Las personas que reciben esta información deben ejercer su juicio independiente para determinar si es adecuada para un propósito particular. El usuario del producto es el único responsable del cumplimiento de todas las leyes y reglamentos aplicables al uso de los productos, incluidos los derechos de propiedad intelectual de terceros. Como los usos ordinarios o de otro tipo de este producto están fuera del control de MyLottush, no se hace ninguna representación o garantía, expresa o implícita, en cuanto a los efectos de dichos usos, (incluyendo daños o lesiones), o los resultados obtenidos. La responsabilidad de MyLottush se limita al valor de los bienes y no incluye ninguna pérdida consecuente. MyLottush no será responsable de ningún error o demora en el contenido, ni de ninguna acción tomada en base al mismo. MyLottush no será responsable de ningún daño que resulte del uso o la confianza en esta información.