

SAFETY DATA SHEET (SDS)

Version 2.0

Revision Date : February 9,2023

Print Date : March 18, 2023

1. PRODUCT AND COMPANY IDENTIFICATION

Product name	:	Pepper Black Essential Oil
Botanical name	:	Piper nigrum L., Piperaceae
INCI name	:	Piper Nigrum Fruit Oil
CAS #	:	8006-82-4 / 84929-41-9
Country of Origin	:	India
EINECS #	:	- / 284-524-7
Product use	:	Domestic and Industrial

2. HAZARDS IDENTIFICATION

Emergency Overview

GHS Classification

Flammable liquids - Category 3

Skin Corrosion/Irritation - Category 2

Skin Sensitization - Category 1

Hazardous to the aquatic environment, long-term hazard - Category 2

GHS Label elements, including precautionary statements



Signal: Danger

Hazard statement(s)

H226	Flammable liquid and vapour.
H304	May be fatal if swallowed and enters airways
H315	Causes skin irritation
H317	May cause an allergic skin reaction.
H319	Causes serious eye irritation.
H410	Very toxic to aquatic life with long lasting effects.

Precautionary statement(s)

P210	Keep away from heat, hot surfaces, sparks, open flames and other ignition sources. No smoking.
P233	Keep container tightly closed.
P240	Ground/bond container and receiving equipment.
P241	Use explosion-proof electrical/ventilating/lighting/equipment.
P242	Use only non-sparking tools.
P243	Take precautionary measures against static discharge.
P261	Avoid breathing dust/fumes/gas/mist/vapours/spray.
P264	Wash skin thoroughly after handling.
P272	Contaminated work clothing should not be allowed out of the workplace.
P273	Avoid release to the environment.
P280	Wear protective gloves/protective clothing/eye protection/face protection.
P301+P310	IF SWALLOWED: Immediately call a POISON CENTER/doctor.
P302+P352	IF ON SKIN: Wash with plenty of water.
P303+P361+P353	IF ON SKIN (or hair): Take off immediately all contaminated clothing. Rinse skin with water/ shower.
P305+P351+P338	IF IN EYES: Rinse cautiously with water for several minutes. Remove contact lenses if present and easy to do – continue rinsing.
P312	Call a POISON CENTER/ doctor/if you feel unwell.
P321	Specific treatment (see section 4 on this label).
P331	Do NOT induce vomiting.
P332+P313	If skin irritation occurs: Get medical advice/attention.
P333+P313	If skin irritation or a rash occurs: Get medical advice/attention.
P337+P313	If eye irritation persists get medical advice/attention.
P362	Take off contaminated clothing.
P363	Wash contaminated clothing before reuse.
P370+P378	In case of fire: Use appropriate fire extinguisher to extinguish.
P391	Collect spillage.
P403+P235	Store in a well ventilated place. Keep cool.
P405	Store locked up.
P501	Dispose of contents/container according to local regulations.

3. COMPOSITION / INFORMATION INGREDIENTS

Product Name	CAS NO	EC NO	Concentration
Black Pepper Oil	8006-82-4/84929-41-9	-/284-524-7	100 %

4. FIRST AID MEASURES

Eye contact

Immediately flush eyes with plenty of cool water for at least 15 minutes. Get medical attention if irritation occurs.

Skin contact

Remove contaminated clothing. Wash area with soap and water. If irritation occurs, get medical attention.

Inhalation

If inhaled, removed to fresh air. Get medical attention if symptoms appear.

Ingestion

Seek medical attention or contact local poison control center.

5. FIRE FIGHTING MEASURES

Suitable extinguishing media

Foam. Dry Powder. Carbon dioxide.

Unsuitable extinguishing media

Water spray, water jet.

Special protective equipment and precautions for fire-fighters

Wear proper protective equipment. Exercise caution when fighting any chemical fire. Use water spray or fog for cooling exposed containers.

Special hazards arising from the substance or its combustible products

Hazardous decomposition products may be formed at extreme heat or if burned.

Resulting gases

Carbon oxides.

6. ACCIDENTAL RELEASE MEASURES

Personal precautions, protective equipment and emergency procedures.

Equip clean crew with proper protection. Respiratory protection equipment may be necessary.

Environmental precautions

Prevent entry to sewers and public waters. Notify authorities if product enters sewers or public waters.

Methods and materials for containment and cleaning up

Clean up any spills as soon as possible, using an absorbent material to collect it. Use suitable disposal containers.

7. HANDLING AND STORAGE

Precautions for safe handling

No direct lighting. No smoking. Ensure prompt removal from eyes, skin and clothing. Wash hands and other exposed areas with mild soap and water before eating, drinking or smoking and when leaving work. Handle in accordance with good industrial hygiene and safety procedures.

Conditions for safe storage, including any incompatibilities

Provide local exhaust or general room ventilation to minimize dust and/or vapour concentrations. Keep container closed when not in use.

8. EXPOSURE CONTROLS AND PERSONAL PROTECTION

Eyes

Use tightly sealed goggles.

Skin

If skin contact or contamination of clothing is likely, protective clothing should be worn. Use protective gloves.

Respiratory

In case of insufficient ventilation, wear suitable respiratory equipment.

Ingestion

Not for ingestion.

Control parameters

Not available.

Exposure limit values

Not available

Biological limit values

Not available.

9. PHYSICAL AND CHEMICAL PROPERTIES

Appearance	:	Colorless to bluish green mobile liquid.
Odor	:	Characteristic aroma.
Flash point	:	48-55°C
Relative density	:	0.856 to 0.886 @ 20 °C
Solubility (ies)	:	Soluble in alcohol and oils. Insoluble in water.
Refractive index	:	1.471 to 1.486 @ 20 °C

10. STABILITY AND REACTIVITY

Reactivity

This material presents no significant reactivity hazard.

Chemical stability

Chemically stable.

Possibility of hazardous reactions

Hazardous polymerization will not occur.

Conditions to avoid

Avoid sparks, flame and other heat sources.

Incompatible materials

Strong oxidizing agents.

Hazardous decomposition products

Carbon Oxides.

11. TOXICOLOGICAL INFORMATION

Skin contact

Adverse skin effects should be prevented by normal care and personal hygiene.

Eye contact

Possible irritation should be prevented by wearing safety glasses.

12. ECOLOGICAL INFORMATION

Ecotoxicity

Avoid any pollution of ground, surface or underground water.

Persistence and degradability

Not available.

Bio - accumulative potential

Not available.

Mobility in soil

Not available.

Other adverse effects

Not available.

13. DISPOSAL CONSIDERATION

Dispose of product in accordance with local, state or provincial and federal regulations. Check with local municipal authority to ensure compliance.

14. TRANSPORT INFORMATION

UN Number

1197

UN proper shipping name

Extracts, liquid

Transport hazard class

3

Packing group

III

US DOT Shipping Description (Land)

1197

Proper shipping name

Extracts, liquid

Class

3

Packaging group

III

IMO-IMDG Shipping Description (Sea)

1197

Proper shipping name

Extracts, liquid

Class

3

Packaging group

III

IATA Shipping Description (Air)

1197

Proper shipping name

Extracts, liquid

Class

3

Packaging group

III

15. REGULATORY INFORMATION

California Proposition 65

• This product can expose you to beta-Myrcene, which is known to the State of California to cause cancer. For more information go to www.P65Warnings.ca.gov.

GHS Hazard Statements

Refer to Section 2.

GHS Precautionary Statements

Refer to Section 2.

16. OTHER INFORMATION

Revision date : February 09 ,2023

Limitación de Responsabilidad

Consulta toda la información técnica relevante específica del producto antes de su uso. La información contenida en este documento se obtiene de fuentes actuales y confiables. MyLottush, proporciona la información contenida en este documento, pero no garantiza su exhaustividad o precisión. Las personas que reciben esta información deben ejercer su juicio independiente para determinar si es adecuada para un propósito particular. El usuario del producto es el único responsable del cumplimiento de todas las leyes y reglamentos aplicables al uso de los productos, incluidos los derechos de propiedad intelectual de terceros. Como los usos ordinarios o de otro tipo de este producto están fuera del control de MyLottush, no se hace ninguna representación o garantía, expresa o implícita, en cuanto a los efectos de dichos usos, (incluyendo daños o lesiones), o los resultados obtenidos. La responsabilidad de MyLottush se limita al valor de los bienes y no incluye ninguna pérdida consecuente. MyLottush no será responsable de ningún error o demora en el contenido, ni de ninguna acción tomada en base al mismo. MyLottush no será responsable de ningún daño que resulte del uso o la confianza en esta información.

CERTIFICATE OF ANALYSIS

Product : **Pepper Black Essential Oil**

Lot No : 11111B10922

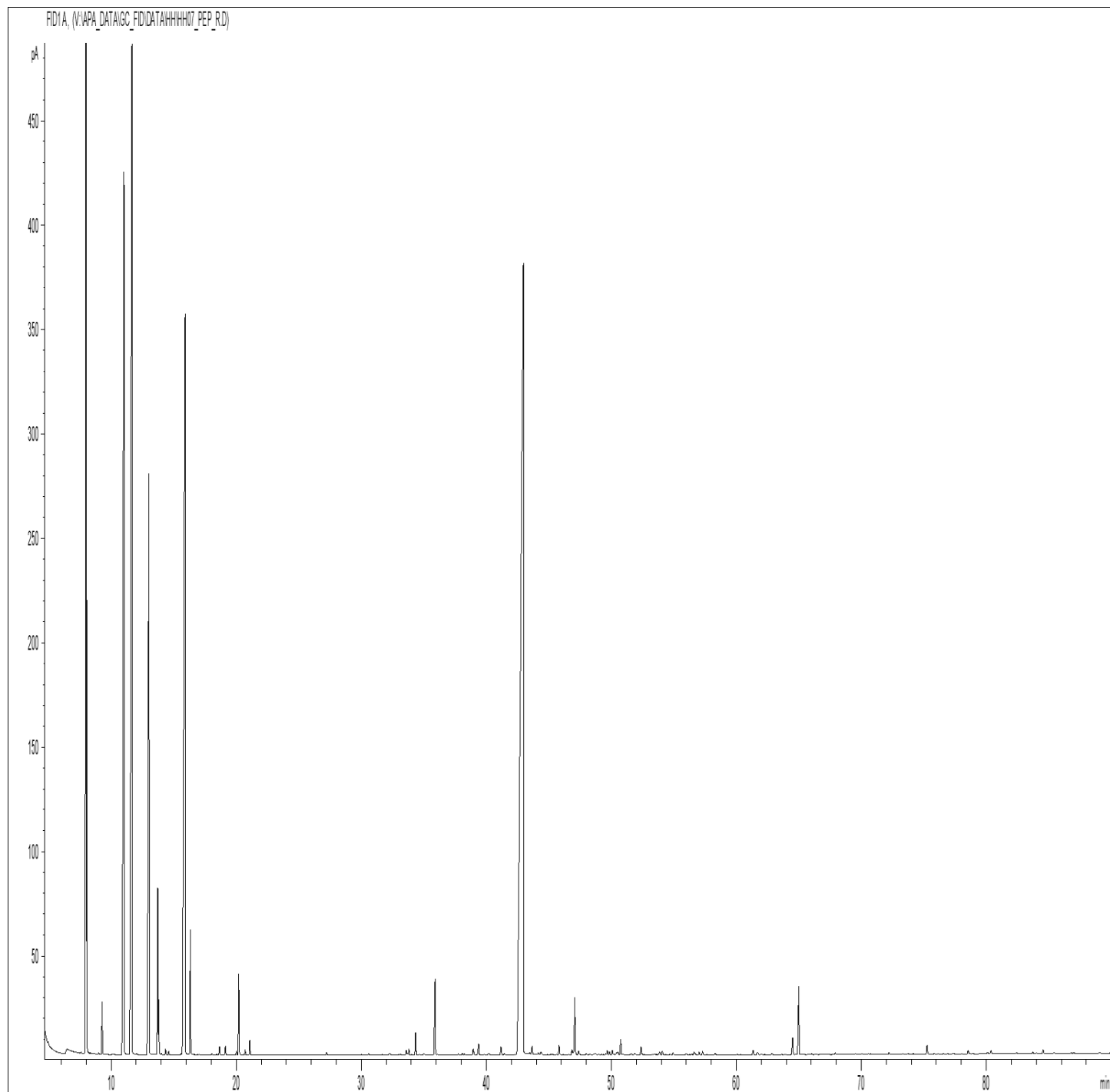
Best Before : September, 2024

<u>Properties</u>	<u>Specifications</u>	<u>Results</u>
Appearance	: Colorless to bluish green mobile liquid.	Complies
Odor	: Characteristic aroma.	Complies
Solubility	: Insoluble in water.	Complies
Refractive Index	: 1.479 to 1.488 @ 25°C	1.4812
Specific Gravity	: 0.8640 to 0.8840 @ 25°C	0.8735
Optical Rotation	: -23.0° to -1.0°C @ 25°C	-14.43
β-Caryophyllene	: 25 - 30 %	27.71

GCMS ANALYSIS

PRODUCT NAME: PEPPER BLACK ESSENTIAL OIL-11111

DATE: April 08, 2022



Due to volume turnover, this report is not lot specific, It is representative of the quality of this oil produced by the manufacturer of this product, Specific lots may vary slightly as is the case in natural products,

GCMS ANALYSIS (cont'd.)

PRODUCT NAME: PEPPER BLACK ESSENTIAL OIL-11111

Peak	RT (min)	Compound name	%
1	8,00	alpha-PINENE	15,48
2	8,05	alpha-THUYENE	1,95
3	8,31	TOLUENE	0,01
4	9,00	alpha-FENCHENE	0,01
5	9,28	CAMPHENE	0,40
6	11,02	beta-PINENE	10,72
7	11,66	SABINENE	13,43
8	12,02	delta2-CARENE	0,01
9	13,02	delta3-CARENE	6,84
10	13,74	beta-MYRCENE	1,45
11	13,82	alpha-PHELLANDRENE	0,40
12	14,01	psi-LIMONENE	0,02
13	14,35	o-CYMENE	0,05
14	14,61	alpha-TERPINENE	0,03
15	15,59	ISOSYLVESTRENE	0,01
16	15,91	LIMONENE	12,68
17	16,34	beta-PHELLANDRENE	1,10
18	18,05	cis-beta-OCIMENE	0,01
19	18,67	gamma-TERPINENE	0,08
20	19,14	trans-beta-OCIMENE	0,08
21	20,03	m-CYMENE	0,03
22	20,21	p-CYMENE	0,76
23	20,72	ISOTERPINOLENE	0,05
24	21,10	TERPINOLENE	0,14
25	27,25	alpha-PINENE OXIDE	0,03
26	30,60	TERPENIC ALCOHOL	0,02
27	32,26	SESQUITERPENOL	0,02
28	32,30	AROMATIC COMPOUND	0,01
29	33,14	LIMONENE trans-1,2-EPOXIDE	0,01
30	33,61	alpha-CUBEBENE	0,05

GCMS ANALYSIS (cont'd,)

PRODUCT NAME: PEPPER BLACK ESSENTIAL OIL-11111

Peak	RT (min)	Compound name	%
31	33,71	4,8-TERPINOLENE EPOXIDE	0,02
32	33,82	trans-THUYANOL	0,07
33	34,36	delta-ELEMENE	0,24
34	34,66	SESQUITERPENE	0,01
35	35,03	YLANGENE	0,03
36	35,92	alpha-COPAENE	0,87
37	37,78	TERPENIC COMPOUND	0,02
38	38,08	KETONIC COMPOUND	0,02
39	38,25	alpha-GURJUNENE	0,02
40	38,96	beta1-CUBEBENE	0,07
41	39,33	cis-THUYANOL	0,03
42	39,39	LINALOOL	0,12
43	40,18	trans-p-MENTH-2-EN-1-OL	0,02
44	41,17	ISOCARYOPHYLLENE	0,11
45	41,42	KETONIC COMPOUND	0,02
46	42,97	beta-CARYOPHYLLENE	28,75
47	43,13	TERPINENE-4-OL	0,09
48	43,46	SESQUITERPENE	0,02
49	43,66	AROMATIC COMPOUND	0,09
50	44,15	MYRTENAL	0,02
51	44,37	cis-p-2,8-MENTHADIEN-1-OL	0,02
52	44,39	ALIPHATIC ALCOHOL	0,02
53	45,28	SESQUITERPENE	0,01
54	45,82	trans-PINOCARVEOL	0,11
55	46,85	SESQUITERPENE	0,06
56	46,94	SESQUITERPENE	0,02
57	47,08	alpha-HUMULENE	0,64
58	47,16	SESQUITERPENE	0,02
59	47,37	trans-p-2,8-MENTHADIEN-1-OL	0,04
60	47,98	E-beta-FARNESENE	0,01

GCMS ANALYSIS (cont'd.)

PRODUCT NAME: PEPPER BLACK ESSENTIAL OIL-11111

Peak	RT (min)	Compound name	%
61	48,29	LAVANDULAL	0,01
62	48,68	TERPENIC COMPOUND	0,02
63	48,75	alpha-TERPINEOL	0,01
64	49,54	GERMACRENE D	0,01
65	49,67	TERPENIC ALCOHOL	0,05
66	49,86	beta-SELINENE	0,04
67	50,08	TERPENIC ALCOHOL	0,06
68	50,44	alpha-SELINENE	0,04
69	50,53	alpha-MUUROLENE	0,03
70	50,75	beta-BISABOLENE	0,17
71	51,60	KETONIC COMPOUND	0,02
72	51,89	COMPOUND Mw=152	0,02
73	52,38	delta-CADINENE	0,09
74	53,85	TERPENIC ALCOHOL	0,04
75	54,07	MYRTENOL	0,04
76	54,67	COMPOUND Mw=152	0,01
77	54,94	SABINOL ISOMER	0,03
78	55,99	KETONIC COMPOUND	0,02
79	56,41	TERPENIC ALCOHOL	0,01
80	56,62	trans-SABINOL	0,04
81	56,67	CALAMENENE	0,01
82	57,02	m-CYMENE-8-OL	0,03
83	57,30	p-CYMENE-8-OL	0,04
84	58,30	cis-CARVEOL	0,02
85	61,34	AROMATIC COMPOUND	0,06
86	61,66	KETONIC COMPOUND	0,03
87	62,86	CUBEBOL	0,02
88	64,50	ISOCARYOPHYLLENE OXIDE	0,20
89	64,99	CARYOPHYLLENE OXIDE	0,79
90	66,70	SESQUITERPENIC EPOXIDE	0,01

GCMS ANALYSIS (cont'd.)

PRODUCT NAME: PEPPER BLACK ESSENTIAL OIL-11111

Peak	RT (min)	Compound name	%
91	67,92	EPOXY-6,7-HUMULENE	0,03
92	69,52	AROMATIC COMPOUND	0,02
93	70,05	SESQUITERPENOL	0,02
94	70,55	ELEMOL	0,02
95	72,21	SPATHULENOL	0,03
96	73,31	SESQUITERPENIC EPOXIDE	0,01
97	73,74	EUGENOL	0,02
98	75,26	TERPENIC COMPOUND	0,11
99	75,84	delta-CADINOL	0,02
100	76,58	E,E,E-alpha-SPRINGENE	0,02
101	77,28	KETONIC COMPOUND	0,01
102	77,41	KETONIC COMPOUND	0,01
103	78,55	beta-NOOTKATOL	0,04
104	78,90	SESQUITERPENOL	0,01
105	80,37	CARYOPHYLLA-2,6-DIEN-5-alpha-OL	0,04
106	82,42	SESQUITERPENOL	0,02
107	83,73	AROMATIC COMPOUND	0,03
108	84,00	SESQUITERPENIC EPOXIDE	0,02
109	84,55	ALIPHATIC ESTER	0,05
110	85,42	AROMATIC COMPOUND	0,02
111	86,77	SESQUITERPENOL	0,01
112	86,99	KETONIC COMPOUND	0,01
		TOTAL	99,98

Limitación de Responsabilidad

Consulta toda la información técnica relevante específica del producto antes de su uso. La información contenida en este documento se obtiene de fuentes actuales y confiables. MyLottush, proporciona la información contenida en este documento, pero no garantiza su exhaustividad o precisión. Las personas que reciben esta información deben ejercer su juicio independiente para determinar si es adecuada para un propósito particular. El usuario del producto es el único responsable del cumplimiento de todas las leyes y reglamentos aplicables al uso de los productos, incluidos los derechos de propiedad intelectual de terceros. Como los usos ordinarios o de otro tipo de este producto están fuera del control de MyLottush, no se hace ninguna representación o garantía, expresa o implícita, en cuanto a los efectos de dichos usos, (incluyendo daños o lesiones), o los resultados obtenidos. La responsabilidad de MyLottush se limita al valor de los bienes y no incluye ninguna pérdida consecuente. MyLottush no será responsable de ningún error o demora en el contenido, ni de ninguna acción tomada en base al mismo. MyLottush no será responsable de ningún daño que resulte del uso o la confianza en esta información.