

SAFETY DATA SHEET (SDS)

Version 2.0

Revision Date : February 2,2023

Print Date : March 19, 2023

1. PRODUCT AND COMPANY IDENTIFICATION

Product name : Orange Essential Oil (Sweet)
Botanical name : Citrus sinensis L.
INCI name : Citrus Sinensis Peel Oil Expressed
CAS # : 8028-48-6
Country of Origin : Brazil
EINECS # : 232-433-8
Product use : Domestic and Industrial

2. HAZARDS IDENTIFICATION

Emergency Overview

GHS Classification

Flammable Liquid - Category 3

Aspiration Hazard - Category 1

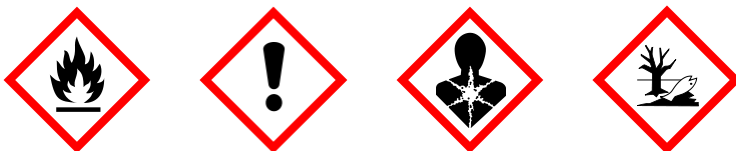
Skin Corrosion/Irritation - Category 2

Skin Sensitization - Category 1

Hazard to the aquatic environment (Acute+Chronique) - Category 1

Serious Eye Damage/Eye Irritation - Category 2A

GHS Label elements, including precautionary statements



Signal: Danger

Hazard statement(s)

H226	Flammable liquid and vapour.
H304	May be fatal if swallowed and enters airways.
H315	Causes skin irritation.
H317	May cause an allergic skin reaction.
H319	Causes serious eye irritation
H400	Very toxic to aquatic life
H410	Very toxic to aquatic life with long-lasting effects

Precautionary statement(s)

P210	Keep away from heat/sparks/open flames/hot surfaces. – No smoking.
P240	Ground/bond container and receiving equipment.
P241	Use explosion-proof electrical/ventilating/lighting/equipment.
P242	Use only non-sparking tools.
P243	Take precautionary measures against static discharge.
P261	Avoid breathing dust/fumes/gas/mist/vapours/spray.
P264	Wash skin thoroughly after handling.
P272	Contaminated work clothing should not be allowed out of the workplace.
P280	Wear protective gloves/protective clothing/eye protection/face protection.
P301+P310	IF SWALLOWED: Immediately call a POISON CENTER/doctor.
P302+P352	IF ON SKIN: Wash with plenty of water.
P303+P361+P353	IF ON SKIN (or hair): Take off immediately all contaminated clothing. Rinse skin with water/ shower.
P331	Do NOT induce vomiting.
P332+P313	If skin irritation occurs: Get medical advice/attention.
P333+P313	If skin irritation or a rash occurs: Get medical advice/attention.
P305+P351+P338	IF IN EYES: Rinse cautiously with water for several minutes. Remove contact lenses if present and easy to do – continue rinsing.
P337+P313	If eye irritation persists get medical advice/attention.
P370+P378	In case of fire: Use appropriate fire extinguisher to extinguish.
P391	Collect spillage.
P403+P235	Store in a well ventilated place. Keep cool.
P405	Store locked up.
P501	Dispose of contents/container according to local regulations.
P362+P364	Take off contaminated clothing and wash it before reuse.

3. COMPOSITION / INFORMATION INGREDIENTS

Product Name	CAS NO	EC NO	Concentration
Citrus Sinensis Peel Oil Expressed	8028-48-6	232-433-8	100 %

4. FIRST AID MEASURES

Eye contact

Immediately flush eyes with plenty of cool water for at least 15 minutes. Get medical attention if irritation occurs.

Skin contact

Remove contaminated clothing. Wash area with soap and water. If irritation occurs, get medical attention.

Inhalation

If inhaled, removed to fresh air. Get medical attention if symptoms appear.

Ingestion

Seek medical attention or contact local poison control center.

5. FIRE FIGHTING MEASURES

Suitable extinguishing media

Sand, earth, dry powder, carbon dioxide.

Unsuitable extinguishing media

Water spray, water jet.

Special protective equipment and precautions for fire-fighters

Wear proper protective equipment. Exercise caution when fighting any chemical fire. Use water spray or fog for cooling exposed containers.

Special hazards arising from the substance or its combustible products

Hazardous decomposition products may be formed at extreme heat or if burned.

Resulting gases

Carbon oxides.

6. ACCIDENTAL RELEASE MEASURES

Personal precautions, protective equipment and emergency procedures.

Equip clean crew with proper protection. Respiratory protection equipment may be necessary.

Environmental precautions

Prevent entry to sewers and public waters. Notify authorities if product enters sewers or public waters.

Methods and materials for containment and cleaning up

Clean up any spills as soon as possible, using an absorbent material to collect it. Use suitable disposal containers.

7. HANDLING AND STORAGE

Precautions for safe handling

No direct lighting. No smoking. Ensure prompt removal from eyes, skin and clothing. Wash hands and other exposed areas with mild soap and water before eating, drinking or smoking and when leaving work. Handle in accordance with good industrial hygiene and safety procedures.

Conditions for safe storage, including any incompatibilities

Provide local exhaust or general room ventilation to minimize dust and/or vapour concentrations. Keep container closed when not in use.

8. EXPOSURE CONTROLS AND PERSONAL PROTECTION

Eyes

Use tightly sealed goggles.

Skin

If skin contact or contamination of clothing is likely, protective clothing should be worn. Use protective gloves.

Respiratory

In case of insufficient ventilation, wear suitable respiratory equipment.

Exposure limit values

Citrus Terpene - 8 h TWA = 30 ppm (AIHA Standart)
TWA = Time Weighted Average.

9. PHYSICAL AND CHEMICAL PROPERTIES

Appearance	:	Intensely Yellow, Orange to Deep Orange Liquid.
Odor	:	Characteristic orange odor.
Flash point	:	46°C
Vapor pressure	:	0.97 mmHg @ 25°C
Relative density	:	0.8420 to 0.8460 @ 25 °C
Solubility (ies)	:	Soluble in ethyl alcohol, insoluble in water.
Refractive index	:	1.4720 to 1.4740 @ 20°C
Optical rotation	:	+94 ° to +99 °

10. STABILITY AND REACTIVITY

Reactivity

This material presents no significant reactivity hazard.

Chemical stability

Chemically stable.

Possibility of hazardous reactions

Hazardous polymerization will not occur.

Conditions to avoid

Avoid sparks, flame and other heat sources.

Incompatible materials

Strong oxidizing agents, acid clays and mineral acids.

Hazardous decomposition products

Carbon monoxide, carbon dioxide.

11. TOXICOLOGICAL INFORMATION

Acute toxicity

LD50 (ORAL,RAT) = 4400-5100 mg/Kg.
LD50 (DERMAL,RABBIT) = >5000 mg/kg.
LC50 (INHALATION) = Not Determined.

12. ECOLOGICAL INFORMATION

Ecotoxicity

Fish: LC50 - between 0.1 and 1 mg/L; Daphnia: EC50 - between 0.1 and 1 mg/L; Algae: EC50 - between 0.1 and 1 mg/L.

Persistence and degradability

Citrus Terpene is a biodegradable solvent occurring in nature as the main component of citrus peel oil.

Bio - accumulative potential

Not available.

Mobility in soil

Not available.

Other adverse effects

Chemical Oxygen Demand : 2,850 gO₂/l or 3,280 gO₂/kg.

13. DISPOSAL CONSIDERATION

Dispose of product in accordance with local, state or provincial and federal regulations. Check with local

municipal authority to ensure compliance.

14. TRANSPORT INFORMATION

UN Number

1197

UN proper shipping name

Extracts, liquid

Transport hazard class

3

Packing group

III

US DOT Shipping Description (Land)

1197

Proper shipping name

Extracts, liquid

Class

3

Packaging group

III

IMO-IMDG Shipping Description (Sea)

1197

Proper shipping name

Extracts, liquid

Class

3

Packaging group

III

IATA Shipping Description (Air)

1197

Proper shipping name

Extracts, liquid

Class

3

Packaging group

III

15. REGULATORY INFORMATION

DSL / NDSL

Included in the DSL inventory.

TSCA

Included in the TSCA inventory.

California Proposition 65

This Product can expose you myrcene, which is known to the State of California to cause cancer. For more information go to www.P65Warnings.ca.gov.

GHS Hazard Statements

Please refer to section 2.

GHS Precautionary Statements

Please refer to section 2.

16. OTHER INFORMATION

Revision date : February 2, 2023

CERTIFICATE OF ANALYSIS

Product : **Orange Essential Oil (Sweet)**

Lot No : 11104A10822

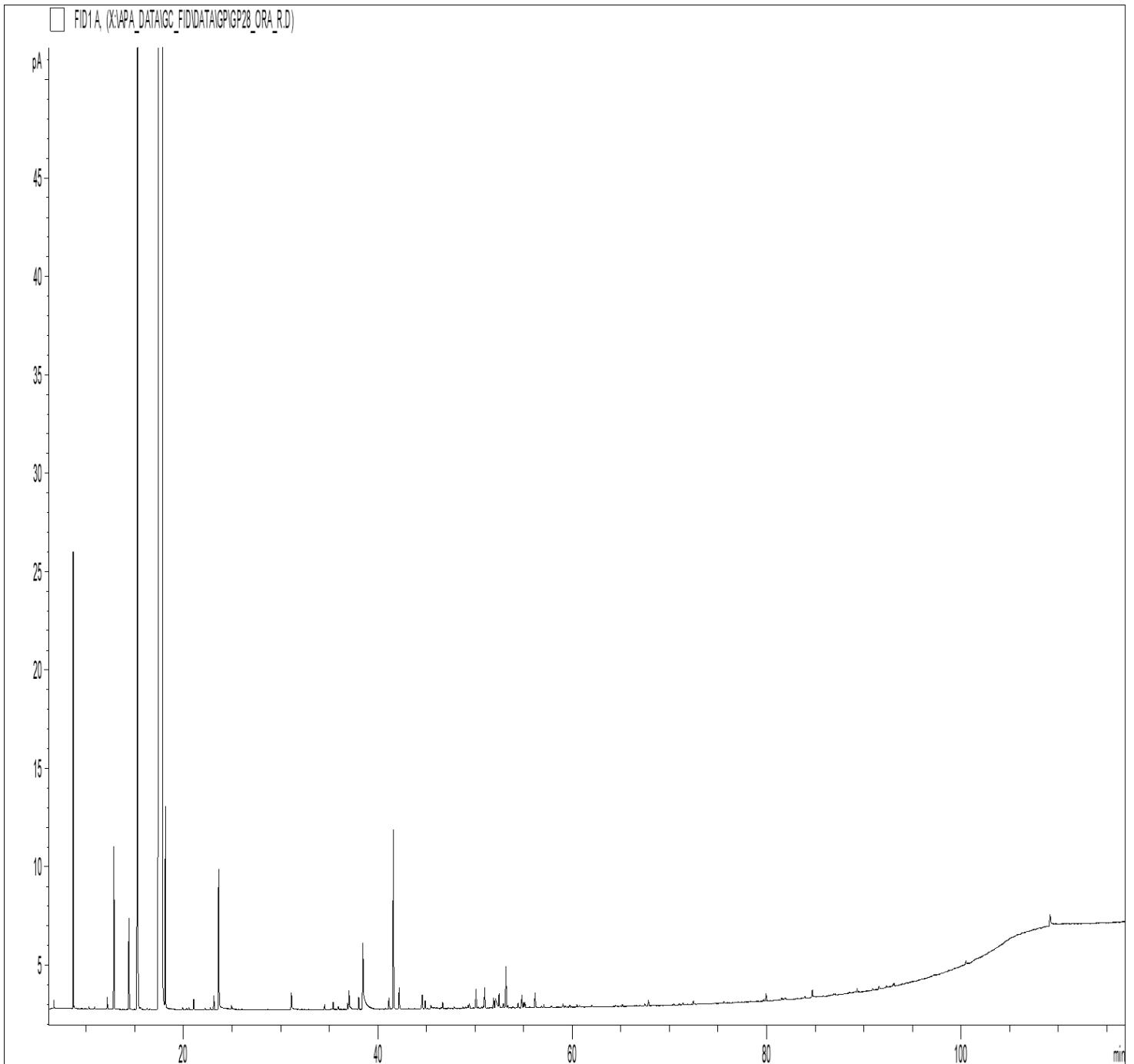
Best Before : August, 2024

<u>Properties</u>	<u>Specifications</u>	<u>Results</u>
Appearance	: Intensely yellow, orange to deep orange liquid.	Complies
Odor	: Characteristic odor.	Complies
Solubility	: Soluble in ethyl alcohol, insoluble in water.	Complies
Specific Gravity	: 0.8420 to 0.8460 @ 25°C	0.8431
Refractive Index	: 1.4720 to 1.4740 @ 20°C	1.4731
Optical Rotation	: +94° to +99°	Complies
Aldehyde	: 1.2 - 2.5 %	1.21
D-Limonene	: -----	94.52

GCMS ANALYSIS

PRODUCT NAME: ORANGE SWEET ESSENTIAL OIL – 11104

DATE: March 9, 2022



Due to volume turnover, this report is not lot specific, It is representative of the quality of this oil produced by the manufacturer of this product, Specific lots may vary slightly as is the case in natural products,

GCMS ANALYSIS (cont'd,)

PRODUCT NAME: ORANGE SWEET ESSENTIAL OIL – 11104

Peak	RT (min)	Compound name	%
1	8,67	alpha-PINENE	0,55
2	12,17	beta-PINENE	0,02
3	12,85	SABINENE	0,25
4	14,39	delta3-CARENE	0,16
5	15,28	beta-MYRCENE	1,99
6	17,86	LIMONENE	95,36
7	18,14	beta-PHELLANDRENE	0,29
8	21,06	trans-beta-OCIMENE	0,02
9	23,14	TERPINOLENE	0,02
10	23,63	OCTANAL	0,24
11	31,11	NONANAL	0,03
12	35,41	LIMONENE trans-1,2-EPOXIDE	0,01
13	37,04	CITRONELLAL	0,03
14	38,02	alpha-COPAENE	0,02
15	38,45	DECANAL	0,17
16	41,14	beta1-CUBEBENE	0,02
17	41,59	LINALOOL	0,31
18	42,19	1-OCTANOL	0,04
19	44,57	SESQUITERPENE	0,04
20	44,87	beta-CARYOPHYLLENE	0,02
21	46,66	cis-p-2,8-MENTHADIEN-1-OL	0,01
22	50,09	NERAL	0,04
23	50,99	alpha-TERPINEOL	0,04
24	51,91	GERMACRENE D	0,02
25	52,11	DODECANAL	0,04
26	52,47	VALENCENE	0,03
27	53,18	GERANIAL	0,08
28	54,81	delta-CADINENE	0,03
29	54,99	1-DECANOL	0,01
30	56,17	PERILLALDEHYDE	0,03

GCMS ANALYSIS (cont'd.)

PRODUCT NAME: ORANGE SWEET ESSENTIAL OIL - 11104

Peak	RT (min)	Compound name	%
31	67,83	LIMONENE-10-OL	0,01
32	79,93	beta-SINENSAL	0,02
33	84,71	alpha-SINENSAL	0,01
34	109,15	PALMITIC ACID	0,03
		TOTAL	99,99

Limitación de Responsabilidad

Consulta toda la información técnica relevante específica del producto antes de su uso. La información contenida en este documento se obtiene de fuentes actuales y confiables. MyLottush, proporciona la información contenida en este documento, pero no garantiza su exhaustividad o precisión. Las personas que reciben esta información deben ejercer su juicio independiente para determinar si es adecuada para un propósito particular. El usuario del producto es el único responsable del cumplimiento de todas las leyes y reglamentos aplicables al uso de los productos, incluidos los derechos de propiedad intelectual de terceros. Como los usos ordinarios o de otro tipo de este producto están fuera del control de MyLottush, no se hace ninguna representación o garantía, expresa o implícita, en cuanto a los efectos de dichos usos, (incluyendo daños o lesiones), o los resultados obtenidos. La responsabilidad de MyLottush se limita al valor de los bienes y no incluye ninguna pérdida consecuente. MyLottush no será responsable de ningún error o demora en el contenido, ni de ninguna acción tomada en base al mismo. MyLottush no será responsable de ningún daño que resulte del uso o la confianza en esta información.