

# SAFETY DATA SHEET (SDS)

Version 2.0

Revision Date : February 8,2023

Print Date : March 18, 2023

## 1. PRODUCT AND COMPANY IDENTIFICATION

---

Product name	:	Juniper Berry Essential Oil (India)
Botanical name	:	Juniperus communis
INCI name	:	Juniperus Communis Fruit Oil
CAS #	:	8002-68-4 / 73049-62-4 / 84603-69-0
Country of Origin	:	India
EINECS #	:	- / - / 283-268-3
Product use	:	Domestic and Industrial

## 2. HAZARDS IDENTIFICATION

### Emergency Overview

### GHS Classification

Flammable Liquid - Category 3

Aspiration Toxicity - Category 2

Skin corrosion/irritation - Category 2

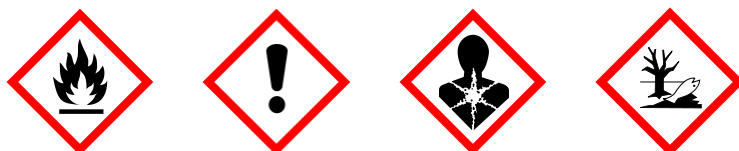
Skin Sensitization Category 1

Serious eye damage/eye irritation - Category 2A

Hazardous to aquatic environment - Short Term- Category 2

Hazardous to aquatic environment - Long Term- Category 2

### GHS Label elements, including precautionary statements



Signal: Danger

### Hazard statement(s)

H226	Flammable liquid and vapour.
H304	May be fatal if swallowed and enters airways.
H315	Causes skin irritation.
H317	May cause an allergic skin reaction.
H319	Causes serious eye irritation.
H401	Toxic to aquatic life.
H411	Toxic to aquatic life with long-lasting effects.

**Precautionary statement(s)**

P210	Keep away from heat, hot surfaces, sparks, open flames and other ignition sources. No smoking.
P233	Keep container tightly closed.
P240	Ground/bond container and receiving equipment.
P241	Use explosion-proof electrical/ventilating/lighting/equipment.
P242	Use only non-sparking tools.
P243	Take precautionary measures against static discharge.
P261	Avoid breathing dust/fumes/gas/mist/vapours/spray.
P264	Wash ... thoroughly after handling.
P272	Contaminated work clothing should not be allowed out of the workplace.
P273	Avoid release to the environment.
P280	Wear protective gloves/protective clothing/eye protection/face protection.
P301+P310	IF SWALLOWED: Immediately call a POISON CENTER/doctor.
P302+P352	IF ON SKIN: Wash with plenty of water.
P303+P361+P353	IF ON SKIN (or hair): Take off immediately all contaminated clothing. Rinse skin with water/ shower.
P305+P351+P338	IF IN EYES: Rinse cautiously with water for several minutes. Remove contact lenses if present and easy to do - continue rinsing.
P321	Specific treatment (see section 4 on this label).
P331	Do NOT induce vomiting.
P333+P313	If skin irritation or a rash occurs: Get medical advice/attention.
P337+P313	If eye irritation persists get medical advice/attention.
P362	Take off contaminated clothing.
P363	Wash contaminated clothing before reuse.
P370+P378	In case of fire: Use appropriate fire extinguisher to extinguish.
P403+P235	Store in a well ventilated place. Keep cool.
P405	Store locked up.
P501	Dispose of contents/container according to local regulations.

**Other Info**

**3. COMPOSITION / INFORMATION INGREDIENTS**

Product Name	CAS NO	EC NO	Concentration
Juniperus Communis Fruit Oil	8002-68-4 / 73049-62-4 / 84603-69-0	- / - / 283-268-3	100 %

## 4. FIRST AID MEASURES

---

### **Eye contact**

Immediately flush eyes with plenty of cool water for at least 15 minutes. Get medical attention if irritation occurs.

### **Skin contact**

Remove contaminated clothing. Wash area with soap and water. If irritation occurs, get medical attention.

### **Inhalation**

If inhaled, removed to fresh air. Get medical attention if symptoms appear.

### **Ingestion**

Seek medical attention or contact local poison control center.

## 5. FIRE FIGHTING MEASURES

---

### **Suitable extinguishing media**

Foam. Dry Powder. Carbon dioxide.

### **Unsuitable extinguishing media**

Water spray, water jet.

### **Special protective equipment and precautions for fire-fighters**

Wear proper protective equipment. Exercise caution when fighting any chemical fire. Use water spray or fog for cooling exposed containers.

### **Special hazards arising from the substance or its combustible products**

Hazardous decomposition products may be formed at extreme heat or if burned.

### **Resulting gases**

Carbon oxides.

## 6. ACCIDENTAL RELEASE MEASURES

---

### **Personal precautions, protective equipment and emergency procedures.**

Equip clean crew with proper protection. Respiratory protection equipment may be necessary.

### **Environmental precautions**

Prevent entry to sewers and public waters. Notify authorities if product enters sewers or public waters.

### **Methods and materials for containment and cleaning up**

Clean up any spills as soon as possible, using an absorbent material to collect it. Use suitable disposal containers.

## 7. HANDLING AND STORAGE

---

### **Precautions for safe handling**

No direct lighting. No smoking. Ensure prompt removal from eyes, skin and clothing. Wash hands and other exposed areas with mild soap and water before eating, drinking or smoking and when leaving work. Handle in accordance with good industrial hygiene and safety procedures.

### **Conditions for safe storage, including any incompatibilities**

Provide local exhaust or general room ventilation to minimize dust and/or vapour concentrations. Keep container closed when not in use.

## 8. EXPOSURE CONTROLS AND PERSONAL PROTECTION

---

### **Eyes**

Use tightly sealed goggles.

### **Skin**

If skin contact or contamination of clothing is likely, protective clothing should be worn. Use protective gloves.

### **Respiratory**

In case of insufficient ventilation, wear suitable respiratory equipment.

### **Ingestion**

Not for ingestion.

## **9. PHYSICAL AND CHEMICAL PROPERTIES**

---

Appearance	:	Colorless to light yellow liquid.
Odor	:	Warm spicy, pungent and peculiar characteristic of berries.
Flash point	:	38°C
Relative density	:	0.840 to 0.870 @ 25 °C
Solubility (ies)	:	Soluble in alcohol and oils. Insoluble in water.
Refractive index	:	1.460 to 1.481 @ 25 °C
Optical rotation	:	+5° to +22° @ 25 °C

## **10. STABILITY AND REACTIVITY**

---

### **Reactivity**

This material presents no significant reactivity hazard.

### **Chemical stability**

Chemically stable.

### **Possibility of hazardous reactions**

Hazardous polymerization will not occur.

### **Conditions to avoid**

Avoid sparks, flame and other heat sources.

### **Incompatible materials**

Strong oxidizing agents.

### **Hazardous decomposition products**

Carbon Oxides.

## **11. TOXICOLOGICAL INFORMATION**

---

### **Chronic toxicity**

May cause allergic reactions on skin.

### **Reproductive toxicity**

No adverse effects on reproduction are known.

### **Inhalation**

Inhalation of high concentrations of vapor may result in irritation of eyes, nose and throat, headache, nausea, and dizziness.

### **Skin contact**

Adverse skin effects should be prevented by normal care and personal hygiene.

### **Eye contact**

Possible irritation should be prevented by wearing safety glasses.

### **Ingestion**

Low order toxicity causing irritation of the stomach and intestines which results in nausea and vomiting

### **Repeated exposure**

Repeated or prolonged contact may cause redness, irritation and scaling of skin (Dermatitis).

## **12. ECOLOGICAL INFORMATION**

---

### **Ecotoxicity**

Toxic to aquatic organisms, may cause long-term adverse effects environment. Avoid any pollution of ground, surface or underground water.

### **Persistence and degradability**

Not available.

### **Bio - accumulative potential**

Not available.

### **Mobility in soil**

Not available.

### **Other adverse effects**

Not available.

## **13. DISPOSAL CONSIDERATION**

---

Dispose of product in accordance with local, state or provincial and federal regulations. Check with local municipal authority to ensure compliance.

## **14. TRANSPORT INFORMATION**

---

### **UN Number**

1197

### **UN proper shipping name**

Extracts, liquid

### **Transport hazard class**

3

### **Packing group**

III

### **US DOT Shipping Description (Land)**

1197

### **Proper shipping name**

Extracts, liquid

### **Class**

3

### **Packaging group**

III

### **IMO-IMDG Shipping Description (Sea)**

1197

### **Proper shipping name**

Extracts, liquid

### **Class**

3

### **Packaging group**

III

**IATA Shipping Description (Air)**

1197

**Proper shipping name**

Extracts, liquid

**Class**

3

**Packaging group**

III

**15. REGULATORY INFORMATION**

---

**California Proposition 65**

Contains substance identified in the revised list of the California Safe Cosmetic program SB 484 (as stated in Proposition 65 revised list: MYRCENE.

**GHS Hazard Statements**

Please refer to section 2.

**GHS Precautionary Statements**

Please refer to section 2.

**16. OTHER INFORMATION**

---

Revision date : February 08 ,2023

## CERTIFICATE OF ANALYSIS

**Product** : **Juniper Berry Essential Oil (India)**

Lot No : 11072A10922

Best Before : March, 2025

<u>Properties</u>	<u>Specifications</u>	<u>Results</u>
Appearance	: Light yellow to clear liquid.	Complies
Odor	: Warm spicy, pungent and peculiar characteristic of berries.	Complies
Solubility	: Soluble in Alcohol.	Complies
Specific Gravity	: 0.858 to 0.880 @ 25°C	0.873
Refractive Index	: 1.457 to 1.482 @ 20°C	1.4758
Optical Rotation	: +2° to +24°	+18.6°
$\alpha$ -Pinene	: 25 to 65 %	57.67%
Myrcene	: 2 to 10 %	2.78 %
Limonene	: -----	25.48 %

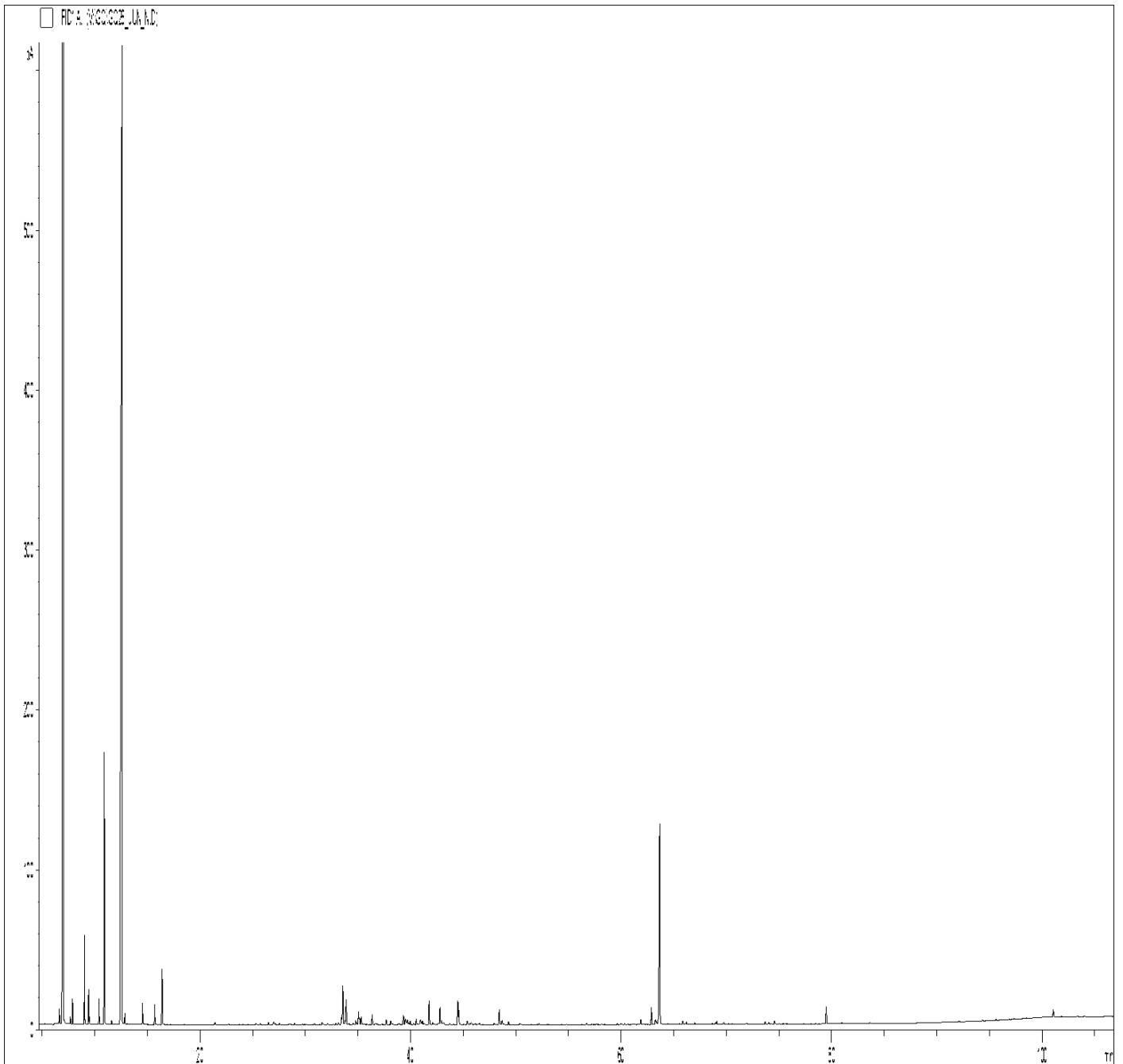
### Limitación de Responsabilidad

Consulta toda la información técnica relevante específica del producto antes de su uso. La información contenida en este documento se obtiene de fuentes actuales y confiables. MyLottush, proporciona la información contenida en este documento, pero no garantiza su exhaustividad o precisión. Las personas que reciben esta información deben ejercer su juicio independiente para determinar si es adecuada para un propósito particular. El usuario del producto es el único responsable del cumplimiento de todas las leyes y reglamentos aplicables al uso de los productos, incluidos los derechos de propiedad intelectual de terceros. Como los usos ordinarios o de otro tipo de este producto están fuera del control de MyLottush, no se hace ninguna representación o garantía, expresa o implícita, en cuanto a los efectos de dichos usos, (incluyendo daños o lesiones), o los resultados obtenidos. La responsabilidad de MyLottush se limita al valor de los bienes y no incluye ninguna pérdida consecuente. MyLottush no será responsable de ningún error o demora en el contenido, ni de ninguna acción tomada en base al mismo. MyLottush no será responsable de ningún daño que resulte del uso o la confianza en esta información.

**GCMS ANALYSIS**

**PRODUCT NAME: JUNIPER BERRY ESSENTIAL OIL (INDIA) - 11072**

**DATE: March 8, 2022**



*Due to volume turnover, this report is not lot specific, It is representative of the quality of this oil produced by the manufacturer of this product, Specific lots may vary slightly as is the case in natural products,*



GCMS ANALYSIS (cont'd.)

PRODUCT NAME: JUNIPER BERRY ESSENTIAL OIL (INDIA) - 11072

Peak	RT (min)	Compound name	%
1	6,64	TRICYCLENENE	0,16
2	7,01	<b>alpha-PINENE</b>	<b>54,56</b>
3	6,75	alpha-THUYENE	0,30
4	7,67	alpha-FENCHENE	0,06
5	7,88	CAMPHENE	0,22
6	9,02	<b>beta-PINENE</b>	<b>0,89</b>
7	9,42	<b>SABINENE</b>	<b>0,35</b>
8	9,50	PINADIENE	0,07
9	10,41	delta3-CARENE	0,29
10	10,91	<b>beta-MYRCENE</b>	<b>3,03</b>
11	11,02	alpha-PHELLANDRENE	0,03
12	11,59	alpha-TERPINENE	0,05
13	12,57	<b>LIMONENE</b>	<b>25,05</b>
14	12,85	beta-PHELLANDRENE	0,14
15	13,09	1,3,8-p-MENTHATRIENE	0,02
16	14,54	gamma-TERPINENE	0,27
17	14,60	trans-beta-OCIMENE	0,02
18	15,69	p-CYMENE	0,26
19	16,39	TERPINOLENE	0,72
20	21,43	alpha-PINENE EPOXIDE	0,04
21	25,30	alpha,p-DIMETHYLSTYRENE	0,03
22	25,72	LIMONENE cis-1,2-EPOXIDE	0,02
23	26,51	LIMONENE trans-1,2-EPOXIDE	0,05
24	26,98	alpha-CUBEBENE	0,03
25	27,02	4,8-TERPINOLENE EPOXIDE	0,05
26	27,17	FENCHYL ACETATE	0,03
27	27,56	delta-ELEMENE	0,03
28	28,46	alpha-CAMPHOLENAL	0,05
29	29,01	alpha-COPAENE	0,03
30	29,73	CAMPHOR	0,03

GCMS ANALYSIS (cont'd.)

PRODUCT NAME: JUNIPER BERRY ESSENTIAL OIL (INDIA) - 11072

Peak	RT (min)	Compound name	%
31	29,93	beta-PINOCAMPHONE	0,02
32	30,12	COMPOUND Mw=152	0,01
33	30,71	alpha-GURJUNENE	0,02
34	30,89	TERPENIC COMPOUND	0,03
35	31,62	BERGAMOTENE ISOMER	0,05
36	31,77	beta1-CUBEBENE	0,02
37	32,12	cis-THUYANOL	0,04
38	32,63	LIMONENE cis-8,9-EPOXIDE	0,02
39	32,91	alpha-cis-BERGAMOTENE	0,05
40	33,15	METHYL CITRONELLATE	0,05
41	33,46	alpha-CEDRENE	0,16
42	33,58	CEDRENE ISOMER	0,68
43	33,78	epsilon-CADINENE	0,09
44	33,90	<b>BORNYL ACETATE</b>	<b>0,43</b>
45	34,08	FENCHOL	0,02
46	34,19	ISOBORNYL ACETATE	0,03
47	34,55	alpha-trans-BERGAMOTENE	0,04
48	34,81	beta-ELEMENE	0,08
49	34,93	beta-CUBEBENE	0,02
50	35,06	<b>beta-CARYOPHYLLENE</b>	<b>0,24</b>
51	35,16	beta-CEDRENE	0,12
52	35,33	<b>TERPINENE-4-OL</b>	<b>0,16</b>
53	35,47	2-UNDECANONE	0,01
54	35,59	HOTRIENOL	0,02
55	35,86	AROMADENDRENE	0,03
56	36,37	THUYOPSENE	0,18
57	36,61	cis-p-2,8-MENTHADIEN-1-OL	0,04
58	36,80	CADINADIENE ISOMERE	0,03
59	37,27	CADINA-3,5-DIENE	0,02
60	37,70	GERMACRENE A	0,10

GCMS ANALYSIS (cont'd.)

PRODUCT NAME: JUNIPER BERRY ESSENTIAL OIL (INDIA) – 11072

Peak	RT (min)	Compound name	%
61	38,14	trans-PINOCARVEOL	0,08
62	38,28	cis-VERBENOL	0,02
63	38,81	SESQUITERPENE	0,02
64	38,90	trans-p-2,8-MENTHADIEN-1-OL	0,02
65	39,03	ZONARENE	0,02
66	39,34	<b>alpha-HUMULENE</b>	<b>0,20</b>
67	39,52	E-beta-FARNESENE	0,14
68	39,69	trans-VERBENOL	0,10
69	39,82	cis-4,5-MUUROLADIENE	0,05
70	39,98	CURCUMENE ISOMER	0,08
71	40,28	LAVANDULAL	0,04
72	40,54	gamma-MUUROLENE	0,11
73	40,78	TERPENYL ACETATE	0,02
74	40,94	SESQUITERPENE	0,15
75	41,12	alpha-TERPINEOL	0,08
76	41,29	TERPENIC ESTER	0,05
77	41,76	<b>GERMACRENE D</b>	<b>0,44</b>
78	41,86	SESQUITERPENE	0,01
79	42,09	MUUROLADIENE ISOMER	0,05
80	42,26	EREMOPHILENE	0,02
81	42,60	alpha-SELINENE	0,04
82	42,79	TERPENIC ESTER	0,35
83	42,94	beta-BISABOLENE	0,08
84	43,07	BICYCLOGERMACRENE	0,03
85	43,15	beta-HIMACHALENE	0,05
86	43,69	beta-CURCUMENE	0,03
87	44,03	trans-ISOPIPERITENOL	0,02
88	44,48	<b>delta-CADINENE</b>	<b>0,41</b>
89	44,58	gamma-CADINENE	0,25
90	45,06	delta-SELINENE	0,02

GCMS ANALYSIS (cont'd.)

PRODUCT NAME: JUNIPER BERRY ESSENTIAL OIL (INDIA) – 11072

Peak	RT (min)	Compound name	%
91	45,38	beta-SESQUIPELLANDRENE	0,07
92	45,41	alpha-CURCUMENE	0,04
93	45,62	SELINADIENE ISOMER	0,02
94	45,76	SELINA-3,7-DIENE	0,05
95	46,14	CADINA-1,4-DIENE	0,04
96	46,41	MYRTENOL	0,02
97	46,54	alpha-AMORPHENE	0,03
98	47,94	CUPARENE	0,04
99	48,42	GERMACRENE B	0,28
100	48,65	trans-CARVEOL	0,05
101	48,70	CALAMENENE	0,05
102	49,32	p-CYMENE-8-OL	0,06
103	50,34	cis-CARVEOL	0,03
104	52,03	epi-CUBEBOL	0,02
105	52,19	6-epi-SHYOBUNOL	0,03
106	54,80	CUBEBOL	0,01
107	56,71	CARYOPHYLLENE EPOXIDE	0,04
108	57,61	CHRYSANTHEMOL ISOMER	0,02
109	58,14	HUMULOL	0,02
110	59,64	epoxy-6,7-HUMULENE	0,03
111	59,98	NEROLIDOL	0,03
112	60,33	GERMACRENE D-4-OL	0,03
113	60,63	epi-CUBENOL	0,02
114	61,03	CUBENOL	0,03
115	61,30	IONONE ISOMER	0,01
116	61,85	ELEMOL	0,11
117	62,40	CEDROL ISOMER	0,02
118	62,87	AROMATIC COMPOUND Mw=222	0,30
119	63,26	AROMATIC COMPOUND Mw=222	0,13
120	63,43	SESQUITERPENIC EPOXIDE	0,05

GCMS ANALYSIS (cont'd,)

PRODUCT NAME: JUNIPER BERRY ESSENTIAL OIL (INDIA) – 11072

Peak	RT (min)	Compound name	%
121	63,66	<b>CEDROL</b>	<b>4,44</b>
122	64,41	CEDROL ISOMER	0,03
123	65,54	CEDROL ISOMER	0,02
124	65,85	CEDRYL ACETATE	0,08
125	66,19	T-CADINOL	0,06
126	66,99	alpha-MUUROLOL	0,04
127	67,53	delta-CADINOL	0,02
128	68,26	DITERPENE Mw=272	0,01
129	68,67	alpha-EUDESOL	0,04
130	68,96	beta-EUDESOL	0,03
131	69,07	alpha-CADINOL	0,07
132	69,74	CITRONELLIC ACID	0,05
133	70,20	beta-NOOTKATOL	0,03
134	70,55	DITERPENE Mw=272	0,02
135	71,91	COMPOUND Mw=280	0,03
136	73,68	SANDARACOPIMARADIENE Mw=272	0,05
137	74,01	beta-ASARONE	0,07
138	74,58	MANOYL OXIDE	0,08
139	75,00	AROMATIC COMPOUND	0,02
140	75,37	COMPOUND Mw=220	0,02
141	75,72	DITERPENE Mw=272	0,03
142	79,48	BIFORMENE	0,32
143	80,94	ABIETATRIENE	0,03
144	82,35	10-HYDROXYOPLOPANONE	0,01
145	83,64	DITERPENE Mw=272	0,03
146	92,11	DITERPENIC COMPOUND Mw=286	0,02
147	94,33	PIMARINAL	0,02
148	95,60	DITERPENIC COMPOUND Mw=286	0,03
149	101,04	DITERPENIC COMPOUND Mw=286	0,16
150	103,36	DITERPENIC COMPOUND Mw=286	0,02
		<b>TOTAL</b>	<b>99,88</b>

**Limitación de Responsabilidad**

Consulta toda la información técnica relevante específica del producto antes de su uso. La información contenida en este documento se obtiene de fuentes actuales y confiables. MyLottush, proporciona la información contenida en este documento, pero no garantiza su exhaustividad o precisión. Las personas que reciben esta información deben ejercer su juicio independiente para determinar si es adecuada para un propósito particular. El usuario del producto es el único responsable del cumplimiento de todas las leyes y reglamentos aplicables al uso de los productos, incluidos los derechos de propiedad intelectual de terceros. Como los usos ordinarios o de otro tipo de este producto están fuera del control de MyLottush, no se hace ninguna representación o garantía, expresa o implícita, en cuanto a los efectos de dichos usos, (incluyendo daños o lesiones), o los resultados obtenidos. La responsabilidad de MyLottush se limita al valor de los bienes y no incluye ninguna pérdida consecuente. MyLottush no será responsable de ningún error o demora en el contenido, ni de ninguna acción tomada en base al mismo. MyLottush no será responsable de ningún daño que resulte del uso o la confianza en esta información.