

SAFETY DATA SHEET (SDS)

Version 2.0

Revision Date : April 21,2022

Print Date : March 18, 2023

1. PRODUCT AND COMPANY IDENTIFICATION

Product name	:	Copaiba Balsam Essential Oil
Botanical name	:	Copaifera spp
INCI name	:	Copaifera Species Resin Oils
CAS #	:	9000-12-8
Country of Origin	:	Brazil
EINECS #	:	232-526-3
Product use	:	Domestic and Industrial

2. HAZARDS IDENTIFICATION

Emergency Overview

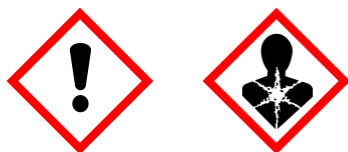
GHS Classification

Aspiration hazard - Category 1

Skin corrosion/irritation - Category 3

Skin Sensitization - Category 1

GHS Label elements, including precautionary statements



Signal: Danger

Hazard statement(s)

H304	May be fatal if swallowed and enters airways.
H316	Causes mild skin irritation.
H317	May cause an allergic skin reaction.

Precautionary statement(s)

P210	Keep away from heat, hot surfaces, sparks, open flames and other ignition sources. No smoking.
P361	Take off immediately all contaminated clothing.
P264	Wash skin thoroughly after handling.
P272	Contaminated work clothing should not be allowed out of the workplace.

P280	Wear protective gloves/protective clothing/eye protection/face protection.
P301+P310	IF SWALLOWED: Immediately call a POISON CENTER/doctor.
P302+P352	IF ON SKIN: Wash with plenty of water/
P321	Specific treatment (see ... on this label).
P331	Do NOT induce vomiting.
P332+P313	If skin irritation occurs: Get medical advice/attention.
P333+P313	If skin irritation or a rash occurs: Get medical advice/attention.
P362	Take off contaminated clothing.
P363	Wash contaminated clothing before reuse.
P370+P378	In case of fire: Use appropriate fire extinguisher to extinguish.
P405	Store locked up.
P501	Dispose of contents/container according to local regulations.

3. COMPOSITION / INFORMATION INGREDIENTS

Product Name	CAS NO	EC NO	Concentration
Copaifera Species Resin Oils	9000-12-8	232-526-3	100 %

4. FIRST AID MEASURES

Eye contact

Immediately flush eyes with plenty of cool water for at least 15 minutes. Get medical attention if irritation occurs.

Skin contact

Remove contaminated clothing. Wash area with soap and water. If irritation occurs, get medical attention.

Inhalation

If inhaled, removed to fresh air. Get medical attention if symptoms appear.

Ingestion

Seek medical attention or contact local poison control center.

5. FIRE FIGHTING MEASURES

Suitable extinguishing media

Foam. Dry Powder. Carbon dioxide.

Unsuitable extinguishing media

Water spray, water jet.

Special protective equipment and precautions for fire-fighters

Wear proper protective equipment. Exercise caution when fighting any chemical fire. Use water spray or fog for cooling exposed containers.

Special hazards arising from the substance or its combustible products

Hazardous decomposition products may be formed at extreme heat or if burned.

Resulting gases

Carbon oxides.

6. ACCIDENTAL RELEASE MEASURES

Personal precautions, protective equipment and emergency procedures.

Equip clean crew with proper protection. Respiratory protection equipment may be necessary.

Environmental precautions

Prevent entry to sewers and public waters. Notify authorities if product enters sewers or public waters.

Methods and materials for containment and cleaning up

Clean up any spills as soon as possible, using an absorbent material to collect it. Use suitable disposal containers.

7. HANDLING AND STORAGE

Precautions for safe handling

No direct lighting. No smoking. Ensure prompt removal from eyes, skin and clothing. Wash hands and other exposed areas with mild soap and water before eating, drinking or smoking and when leaving work. Handle in accordance with good industrial hygiene and safety procedures.

Conditions for safe storage, including any incompatibilities

Provide local exhaust or general room ventilation to minimize dust and/or vapour concentrations. Keep container closed when not in use.

8. EXPOSURE CONTROLS AND PERSONAL PROTECTION

Exposure controls

Use mechanical exhaust or laboratory fume hood to avoid exposure.

Eyes

Use tightly sealed goggles.

Skin

If skin contact or contamination of clothing is likely, protective clothing should be worn. Use protective gloves.

Respiratory

In case of insufficient ventilation, wear suitable respiratory equipment.

Ingestion

Not for ingestion.

9. PHYSICAL AND CHEMICAL PROPERTIES

Appearance	:	Yellow to brown viscous liquid that becomes thicker and darker when exposed to air
Odor	:	Characteristic warm, sweet odor of balsam.
Odor threshold	:	Not available.
pH	:	2.0 to 7.0
Melting Point/Freezing Point	:	Not available.
Initial b.p and boiling range	:	Not available.
Flash point	:	>93°C
Vapor pressure	:	~0.001 mmHg @ 20° C
Relative density	:	0.800 to 1.300 @ 25° C
Solubility (ies)	:	Soluble in alcohol and oils. Insoluble in water.
Refractive index	:	1.4910 to 1.5150 @20° C

10. STABILITY AND REACTIVITY

Reactivity

This material presents no significant reactivity hazard.

Chemical stability

Chemically stable.

Possibility of hazardous reactions

Hazardous polymerization will not occur.

Conditions to avoid

Avoid sparks, flame and other heat sources.

Incompatible materials

Strong oxidizing agents.

Hazardous decomposition products

Carbon Oxides.

11. TOXICOLOGICAL INFORMATION

Acute toxicity

LD50 Oral - rat - 3,521 mg/kg

Carcinogenicity

None of the components of this material are listed as a carcinogen.

IARC

No component of this product present at levels greater than or equal to 0.1% is identified as probable, possible or confirmed human carcinogen by IARC.

ACGIH

No component of this product present at levels greater than or equal to 0.1% is identified as a carcinogen or potential carcinogen by ACGIH.

Chronic toxicity

May cause allergic reactions on skin.

Reproductive toxicity

No adverse effects on reproduction are known.

Inhalation

Inhalation of high concentrations of vapor may result in irritation of eyes, nose and throat, headache, nausea, and dizziness.

Skin contact

Adverse skin effects should be prevented by normal care and personal hygiene.

Eye contact

Possible irritation should be prevented by wearing safety glasses.

Ingestion

Low order toxicity causing irritation of the stomach and intestines which results in nausea and vomiting

Repeated exposure

Repeated or prolonged contact may cause redness, irritation and scaling of skin (Dermatitis).

12. ECOLOGICAL INFORMATION

Ecotoxicity

Toxic to aquatic organisms, may cause long-term adverse effects environment. Avoid any pollution of ground, surface or underground water.

Persistence and degradability

Not available.

Bio - accumulative potential

Not available.

Mobility in soil

Not available.

Other adverse effects

Not available.

13. DISPOSAL CONSIDERATION

Dispose of product in accordance with local, state or provincial and federal regulations. Check with local municipal authority to ensure compliance.

14. TRANSPORT INFORMATION

US DOT Shipping Description (Land)

Not regulated

IMO-IMDG Shipping Description (Sea)

Not regulated

IATA Shipping Description (Air)

Not regulated

15. REGULATORY INFORMATION

SARA 313

Not subject to SARA reporting.

California Proposition 65

This product does not contain chemicals listed per the Safe Drinking Water and Enforcement Act of 1986.

GHS Hazard Statements

Please refer to section 2.

GHS Precautionary Statements

Please refer to section 2.

16. OTHER INFORMATION

Revision date : April 21,2022

CERTIFICATE OF ANALYSIS**Product** : **Copaiba Balsam Essential Oil**

Lot No : 11041A11022

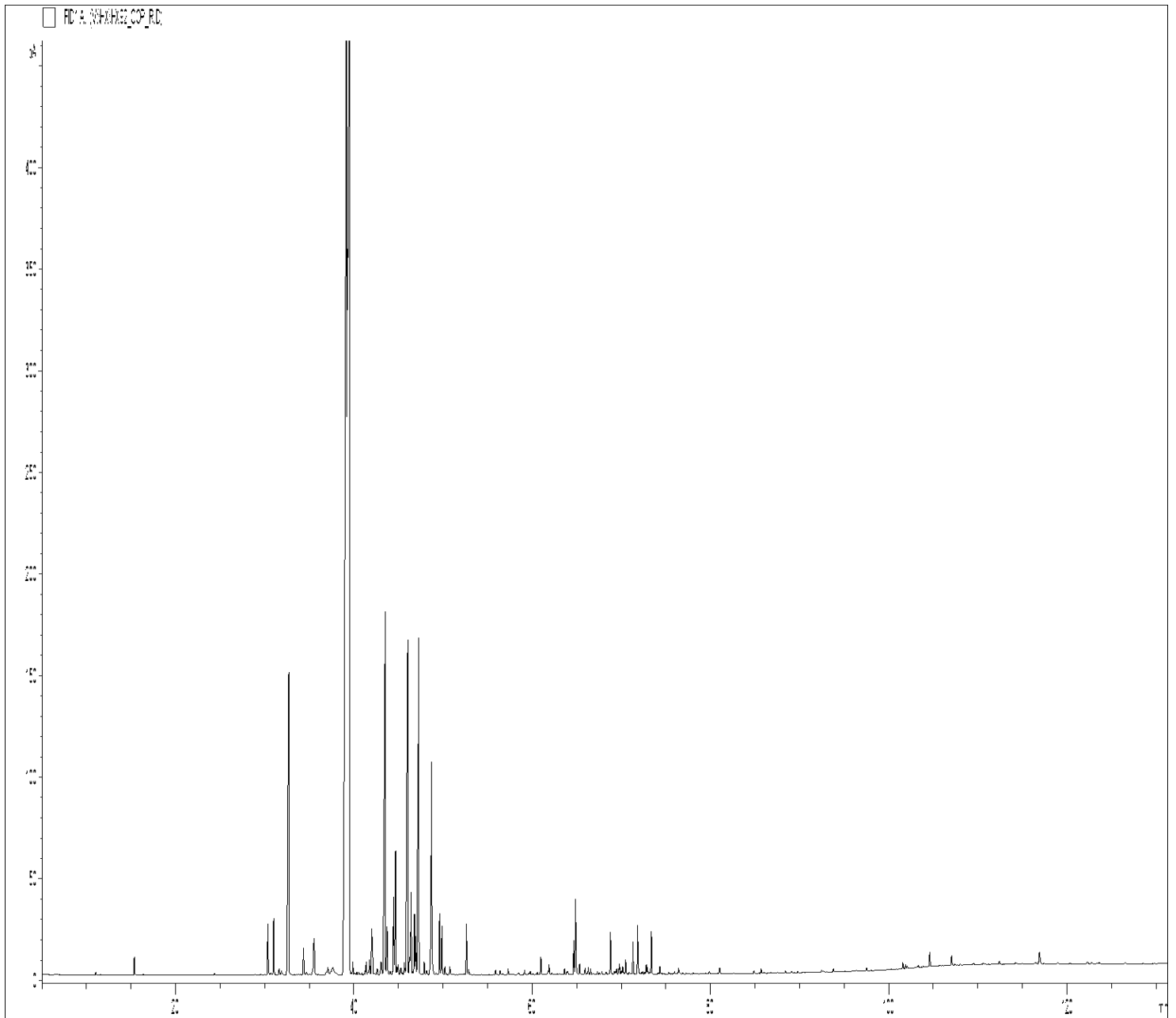
Best Before : October, 2024

<u>Properties</u>	<u>Specifications</u>	<u>Results</u>
Appearance	: Brown to Yellow Viscous Liquid.	Complies
Odor	: Characteristic odor.	Complies
Solubility	: Insoluble in water.	Complies
Specific Gravity	: 0.900 to 0.990 @ 20°C	0.944
Refractive Index	: 1.500 to 1.5150 @ 20°C	1.508
Beta-Caryophyllene	: min 40.0%	44.4

GCMS ANALYSIS

PRODUCT NAME: COPAIBA BALSAM ESSENTIAL OIL – 11041

DATE: July 20, 2022



It is representative of the quality of this oil produced by the manufacturer of this product, Specific lots may vary slightly as is the case in natural products,

GCMS ANALYSIS (cont'd,)

PRODUCT NAME: COPAIBA BALSAM ESSENTIAL OIL – 11041

Peak	RT (min)	Compound	%
1	11.04	p-MENTH-8-ENE	0.02
2	15.36	cis- β -OCIMENE	0.15
3	16.36	trans- β -OCIMENE	0.01
4	24.36	ALLO-OCIMENE	0.03
5	30.36	α -CUBEBENE	0.59
6	30.68	ELEMENE ISOMER	0.02
7	31.01	δ -ELEMENE	0.54
8	31.61	ISOLEDENE	0.07
9	31.80	BICYCLOELEMENE	0.02
10	31.88	YLANGENE	0.04
11	32.70	α-COPAENE	4.92
12	34.35	CYPERENE	0.35
13	34.68	α -GURJUNENE	0.04
14	35.39	SESQUITERPENE	0.04
15	35.55	β 1-CUBEBENE	0.62
16	36.94	α -CEDRENE	0.03
17	37.09	COMPOUND Mw=206	0.13
18	37.45	CEDRENE ISOMER	0.06
19	37.59	α -cis-BERGAMOTENE	0.08
20	37.66	epsilon-CADINENE	0.19
21	37.98	SESQUITERPENE	0.03
22	39.17	α-trans-BERGAMOTENE	8.46
23	39.26	β -ELEMENE	0.51
24	39.53	β-CARYOPHYLLENE	47.89
25	39.89	AROMADENDRENE	0.13
26	40.36	GURJUNENE ISOMER	0.03
27	40.55	HIMACHALADIENE ISOMER	0.04
28	41.27	SESQUITERPENE	0.04
29	41.38	CADINA-3,5-DIENE	0.13
30	41.62	SESQUITERPENE	0.04

GCMS ANALYSIS (cont'd,)

PRODUCT NAME: COPAIBA BALSAM ESSENTIAL OIL – 11041

Peak	RT (min)	Compound	%
31	41.74	GERMACRENE A	0.17
32	41.99	FARNESENE ISOMER	0.50
33	42.07	ALLO-AROMADENDRENE	0.34
34	42.62	FARNESENE ISOMER	0.08
35	43.05	ZONARENE	0.16
36	43.09	SESQUITERPENE	0.05
37	43.51	α-HUMULENE	6.34
38	43.72	E- β -FARNESENE	0.61
39	44.08	cis-4,5-MUUROLADIENE	0.05
40	44.46	Z- β -FARNESENE	0.96
41	44.67	γ -MUUROLENE	1.41
42	44.83	LEDENE	0.08
43	44.97	γ -CURCUMENE	0.10
44	45.65	COMPOUND Mw=206	0.13
45	46.04	GERMACRENE D	5.59
46	46.22	CADINENE ISOMER	0.16
47	46.33	MUUROLADIENE ISOMER	0.11
48	46.42	β -SELINENE	0.85
49	46.59	SESQUITERPENE	0.03
50	46.79	α -SELINENE	0.58
51	46.94	α -MUUROLENE	0.39
52	47.17	BICYCLOGERMACRENE	1.30
53	47.27	β-BISABOLENE	3.69
54	47.88	β -CURCUMENE	0.13
55	48.14	SESQUICINEOLE	0.05
56	48.57	E,E- α -FARNESENE	0.14
57	48.72	δ -CADINENE	2.48
58	48.76	γ -CADINENE	0.28
59	48.86	δ -SELINENE	0.05
60	49.62	β -SESQUIPHELLANDRENE	0.58

GCMS ANALYSIS (cont'd,)

PRODUCT NAME: COPAIBA BALSAM ESSENTIAL OIL – 11041

Peak	RT (min)	Compound	%
61	49.79	α -CURCUMENE	0.04
62	49.87	trans- α -BISABOLENE	0.48
63	50.22	CADINA-1,4-DIENE	0.09
64	50.76	α -AMORPHENE	0.09
65	52.63	GERMACRENE B	0.53
66	52.88	CALAMENENE	0.06
67	55.89	OXYGENED COMPOUND Mw=208	0.04
68	56.39	epi-CUBEBOL	0.04
69	57.30	α -CALACORENE	0.05
70	59.15	CUBEBOL	0.05
71	59.79	β -CALACORENE	0.04
72	60.56	ISOCARYOPHYLLENE OXIDE	0.03
73	60.97	CARYOPHYLLENE OXIDE	0.17
74	61.80	EUDESMOL ISOMER	0.03
75	61.90	SESQUITERPENOL Mw=222	0.10
76	63.63	LEDOL	0.06
77	63.90	EPOXY-6,7-HUMULENE	0.03
78	63.99	SESQUITERPENIC OXIDE	0.03
79	64.67	CARYOPHYLLENOL	0.33
80	64.87	JUNEOL	0.82
81	64.92	epi-CUBENOL	0.13
82	65.33	CUBENOL	0.10
83	65.94	GLOBULOL	0.07
84	66.29	VIRIDIFLOROL	0.07
85	66.56	GUAJOL	0.06
86	67.32	10-epi- γ -EUDESMOL	0.02
87	67.82	ROSIFOLIOL	0.03
88	68.30	SPATHULENOL	0.03
89	68.78	DIHYDROISOCARYOPHYLLENE Mw=206	0.27
90	68.82	COPAENOL ISOMER	0.14

GCMS ANALYSIS (cont'd,)

PRODUCT NAME: COPAIBA BALSAM ESSENTIAL OIL – 11041

Peak	RT (min)	Compound	%
91	69.25	SESQUITERPENOL	0.03
92	69.37	SESQUITERPENOL	0.02
93	69.48	SESQUITERPENOL	0.05
94	69.71	SESQUITERPENIC OXIDE	0.04
95	69.80	β -BISABOLOL	0.10
96	70.00	SESQUITERPENIC OXIDE	0.03
97	70.15	SESQUITERPENOL	0.10
98	70.49	T-CADINOL	0.15
99	71.31	α -MUUROL	0.31
100	71.83	δ -CADINOL	0.48
101	71.90	SESQUITERPENOL	0.07
102	72.40	SESQUITERPENOL	0.03
103	72.80	epi- α -BISABOLOL	0.09
104	72.93	α -BISABOLOL	0.07
105	73.38	α -CADINOL	0.44
106	74.34	EUDESMA-7(11)-EN-4-OL	0.08
107	75.97	SESQUITERPENOL Mw=222	0.04
108	76.42	JUNIPER CAMPHOR	0.09
109	79.88	SESQUITERPENIC OXIDE	0.04
110	81.03	KAUR-16-ENE Mw=272	0.08
111	84.89	AROMATIC COMPOUND	0.03
112	85.69	AROMATIC COMPOUND	0.05
113	88.41	AROMATIC COMPOUND	0.02
114	92.47	epi-MANOOL	0.02
115	93.80	AROMATIC COMPOUND	0.04
116	97.52	AROMATIC COMPOUND	0.03
117	101.58	METHYL COPALATE	0.07
118	101.90	epi-MANOOL ISOMER	0.04
119	102.05	AROMATIC COMPOUND	0.03
120	103.32	AROMATIC COMPOUND	0.03

GCMS ANALYSIS (cont'd,)

PRODUCT NAME: COPAIBA BALSAM ESSENTIAL OIL – 11041

Peak	RT (min)	Compound	%
121	104.60	AROMATIC COMPOUND	0.18
122	107.06	COMPOUND Mw=290	0.12
123	112.42	COMPOUND Mw=302	0.05
124	116.92	COMPOUND Mw=260	0.22
125	122.29	AROMATIC COMPOUND	0.04
		TOTAL	99.91

Limitación de Responsabilidad

Consulta toda la información técnica relevante específica del producto antes de su uso. La información contenida en este documento se obtiene de fuentes actuales y confiables. MyLottush, proporciona la información contenida en este documento, pero no garantiza su exhaustividad o precisión. Las personas que reciben esta información deben ejercer su juicio independiente para determinar si es adecuada para un propósito particular. El usuario del producto es el único responsable del cumplimiento de todas las leyes y reglamentos aplicables al uso de los productos, incluidos los derechos de propiedad intelectual de terceros. Como los usos ordinarios o de otro tipo de este producto están fuera del control de MyLottush, no se hace ninguna representación o garantía, expresa o implícita, en cuanto a los efectos de dichos usos, (incluyendo daños o lesiones), o los resultados obtenidos. La responsabilidad de MyLottush se limita al valor de los bienes y no incluye ninguna pérdida consecuente. MyLottush no será responsable de ningún error o demora en el contenido, ni de ninguna acción tomada en base al mismo. MyLottush no será responsable de ningún daño que resulte del uso o la confianza en esta información.