

# SAFETY DATA SHEET (SDS)

Version 2.0

Revision Date : April 22,2022

Print Date : March 20, 2023

## 1. PRODUCT AND COMPANY IDENTIFICATION

---

Product name : Pine Scotch Essential Oil  
Botanical name : Pinus sylvestris  
INCI name : Pinus Sylvestris Leaf Oil  
CAS # : 8023-99-2 / 84012-35-1  
Country of Origin : Hungary  
EINECS # : - / 281-679-2  
Product use : Domestic and Industrial

## 2. HAZARDS IDENTIFICATION

---

### Emergency Overview

### GHS Classification

Flammable Liquid - Category 3

Acute Toxicity, Oral - Category 4

Acute toxicity, dermal - Category 4

Skin corrosion/irritation - Category 4

Skin Sensitization - Category 1

Serious eye damage/eye irritation - Category 2A

Acute toxicity, inhalation - Category 4

Hazardous to the aquatic environment, Chronic - Category 1

### GHS Label elements, including precautionary statements



Signal: Warning

### Hazard statement(s)

H226	Flammable liquid and vapour.
H302	Harmful if swallowed.
H312	Harmful in contact with skin.
H315	Causes skin irritation.
H317	May cause an allergic skin reaction.
H319	Causes serious eye irritation.
H332	Harmful if inhaled.
H411	Toxic to aquatic life with long-lasting effects.

**Precautionary statement(s)**

P210	Keep away from heat, hot surfaces, sparks, open flames and other ignition sources. No smoking.
P240	Ground/bond container and receiving equipment.
P241	Use explosion-proof electrical/ventilating/lighting/equipment.
P242	Use only non-sparking tools.
P271	Use only outdoors or in a well ventilated area
P273	Avoid release to the environment.
P280	Wear protective gloves/protective clothing/eye protection/face protection.
P301+P310	IF SWALLOWED: Immediately call a POISON center or doctor/physician.
P303+P361+P353	IF ON SKIN (or hair): Take off immediately all contaminated clothing. Rinse skin with water/ shower.
P305+P351+P338	IF IN EYES: Rinse cautiously with water for several minutes. Remove contact lenses if present and easy to do – continue rinsing.
P332+P313	If skin irritation occurs: Get medical advice/attention.
P333+P313	If skin irritation or a rash occurs: Get medical advice/attention.
P370+P380	In case of fire: Use extinguishing media listed in Section 5 of the SDS to extinguish.
P391	Collect spillage.
P403+P235	Store in a well ventilated place. Keep cool.
P501	Dispose of contents and container in accordance with local, regional, national and/or international regulation for hazardous wastes.

**3. COMPOSITION / INFORMATION INGREDIENTS**

Product Name	CAS NO	EC NO	Concentration
alpha-Pinene	80-56-8	201-291-9	70 - 85 %
beta-Pinene	127-91-3	204-872-5	2 - 7 %
Limonene	5989-27-5	227-813-5	3 - 7 %
camphene	79-92-5	201-234-8	1 - 5 %

**4. FIRST AID MEASURES**

**Eye contact**

Immediately flush eyes with plenty of cool water for at least 15 minutes. Get medical attention if irritation occurs.

**Skin contact**

Remove contaminated clothing. Wash area with soap and water. If irritation occurs, get medical attention.

**Inhalation**

If inhaled, removed to fresh air. Get medical attention if symptoms appear.

### **Ingestion**

Seek medical attention or contact local poison control center.

## **5. FIRE FIGHTING MEASURES**

---

### **Suitable extinguishing media**

Carbon dioxide, sand, extinguishing powder.

### **Unsuitable extinguishing media**

Water spray, water jet.

### **Special protective equipment and precautions for fire-fighters**

Wear proper protective equipment. Exercise caution when fighting any chemical fire. Use water spray or fog for cooling exposed containers.

### **Special hazards arising from the substance or its combustible products**

Hazardous decomposition products may be formed at extreme heat or if burned.

### **Resulting gases**

Carbon oxides.

## **6. ACCIDENTAL RELEASE MEASURES**

---

### **Personal precautions, protective equipment and emergency procedures.**

Equip clean crew with proper protection. Respiratory protection equipment may be necessary.

### **Environmental precautions**

Prevent entry to sewers and public waters. Notify authorities if product enters sewers or public waters.

### **Methods and materials for containment and cleaning up**

Clean up any spills as soon as possible, using an absorbent material to collect it. Use suitable disposal containers.

## **7. HANDLING AND STORAGE**

---

### **Precautions for safe handling**

No direct lighting. No smoking. Ensure prompt removal from eyes, skin and clothing. Wash hands and other exposed areas with mild soap and water before eating, drinking or smoking and when leaving work. Handle in accordance with good industrial hygiene and safety procedures.

### **Conditions for safe storage, including any incompatibilities**

Provide local exhaust or general room ventilation to minimize dust and/or vapour concentrations. Keep container closed when not in use.

## **8. EXPOSURE CONTROLS AND PERSONAL PROTECTION**

---

### **Eyes**

Use tightly sealed goggles.

### **Skin**

If skin contact or contamination of clothing is likely, protective clothing should be worn. Use protective gloves.

### **Respiratory**

In case of insufficient ventilation, wear suitable respiratory equipment.

## **9. PHYSICAL AND CHEMICAL PROPERTIES**

---

Appearance : Colorless to pale yellow liquid.

Odor	:	Characteristic pine odor.
Odor threshold	:	Not available.
Flash point	:	40°C
Relative density	:	0.857 to 0.885 @ 20 °C
Solubility (ies)	:	Soluble in alcohol and oils. Insoluble in water.
Refractive index	:	1.465 to 1.479 @ 20 °C
Optical rotation	:	-4.0° to +10° @ 20 °C

## 10. STABILITY AND REACTIVITY

---

### Reactivity

This material presents no significant reactivity hazard.

### Chemical stability

Chemically stable.

### Possibility of hazardous reactions

Hazardous polymerization will not occur.

### Conditions to avoid

Avoid sparks, flame and other heat sources.

### Incompatible materials

Strong oxidizing agents.

### Hazardous decomposition products

Carbon Oxides.

## 11. TOXICOLOGICAL INFORMATION

---

### Acute toxicity

Oral LD50 - 5000 mg/kg (rat)

Dermal LD50 - 5000 mg/kg (rbt)

### Skin contact

Skin irritant

### Eye contact

Eye irritant

## 12. ECOLOGICAL INFORMATION

---

### Ecotoxicity

Very toxic to aquatic organisms, may cause long-term adverse effects environment. Avoid any pollution of ground, surface or underground water.

### Persistence and degradability

Not available.

### Bio - accumulative potential

Not available.

### Mobility in soil

Not available.

### Other adverse effects

Not available.

## 13. DISPOSAL CONSIDERATION

---

Dispose of product in accordance with local, state or provincial and federal regulations. Check with local municipal authority to ensure compliance.

## 14. TRANSPORT INFORMATION

---

### UN Number

1272

### UN proper shipping name

Pine oil

### Transport hazard class

3

### Packing group

III

### US DOT Shipping Description (Land)

1272

### Proper shipping name

Pine oil

### Class

3

### Packaging group

III

### IMO-IMDG Shipping Description (Sea)

1272

### Proper shipping name

Pine oil

### Class

3

### Packaging group

III

### IATA Shipping Description (Air)

1272

### Proper shipping name

Pine oil

### Class

3

### Packaging group

III

## 15. REGULATORY INFORMATION

---

### California Proposition 65

• This product can expose you to beta-Myrcene, which is known to the State of California to cause cancer. For more information go to [www.P65Warnings.ca.gov](http://www.P65Warnings.ca.gov).

### GHS Hazard Statements

Please refer to section 2.

## **GHS Precautionary Statements**

Please refer to section 2.

### **16. OTHER INFORMATION**

---

Revision date : April 22,2022

## CERTIFICATE OF ANALYSIS

**Product** : **Pine Scotch Essential Oil**

Lot No : 11120A10622

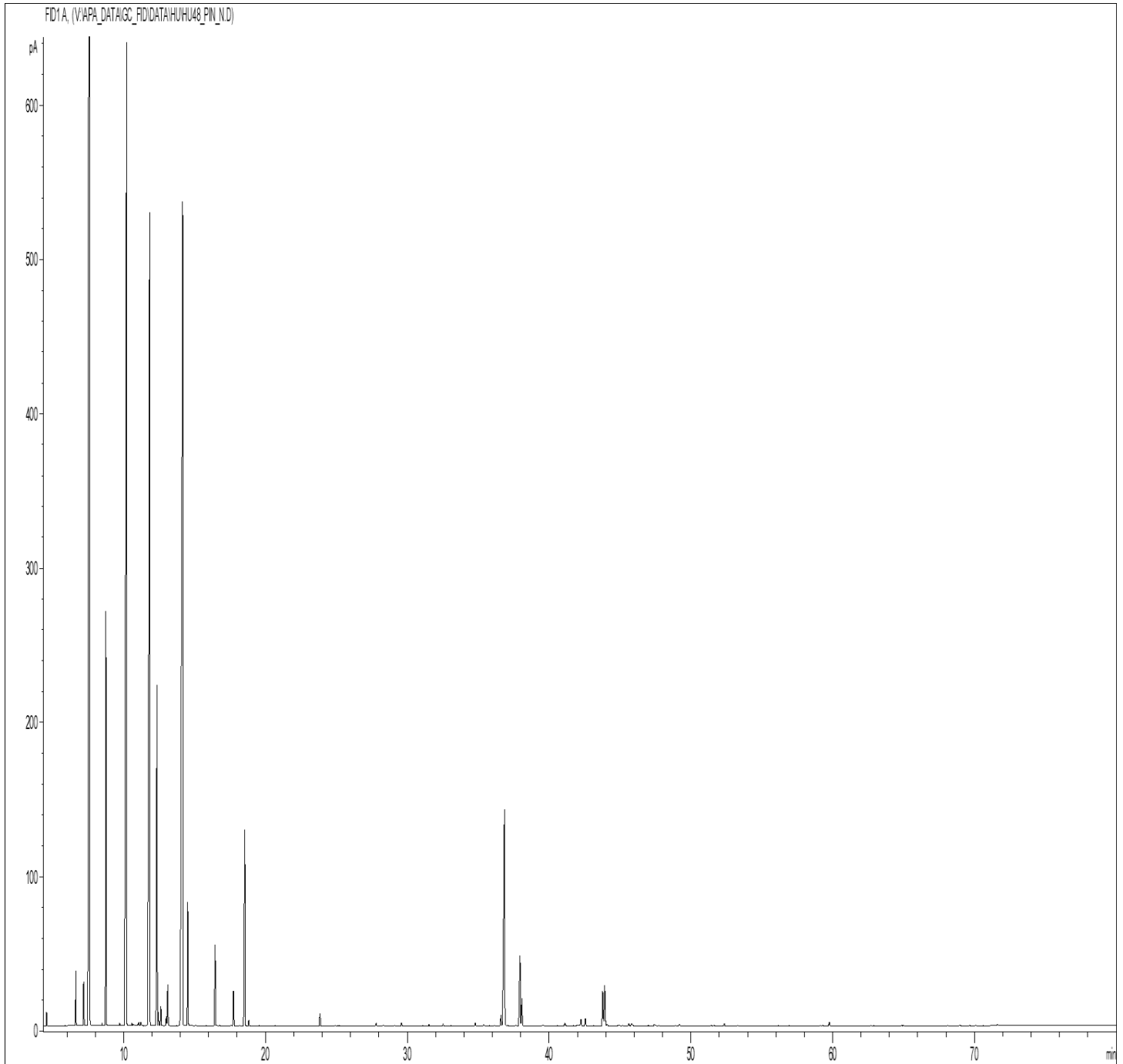
Best Before : June, 2024

<u>Properties</u>	<u>Specifications</u>	<u>Results</u>
Appearance	: Colorless to pale yellow liquid.	Complies
Odor	: Characteristic pine odor.	Complies
Solubility	: Insoluble in water.	Complies
Specific Gravity	: 0.857 to 0.885 @ 20°C	0.865
Refractive Index	: 1.465 to 1.479 @ 20°C	1.472
Optical Rotation	: -4.0° to +10° @ 20°C	0.918
α-Pinene	: 32 - 36 %	32.65
Limonene	: 15 - 20 %	17.01
L Bornyl acetate	: 2 - 5 %	3.93

## GCMS ANALYSIS

**PRODUCT NAME: PINE SCOTCH ESSENTIAL OIL – 11120**

**DATE: July 5, 2022**



*Due to volume turnover, this report is not lot specific, It is representative of the quality of this oil produced by the manufacturer of this product, Specific lots may vary slightly as is the case in natural products,*



### GCMS ANALYSIS (cont'd)

PRODUCT NAME: PINE SCOTCH ESSENTIAL OIL – 11120

Peak	RT (min)	Compound name	%
1	6.63	SANTENE	0.43
2	7.18	TRICYCLENE	0.42
3	7.61	$\alpha$ -PINENE	32.65
4		$\alpha$ -THUYENE	
5	8.48	$\alpha$ -FENCHENE	0.02
6	8.76	CAMPHENE	3.71
7	9.72	1,6-OCTADIENE, 2,7-DIMETHYL-	0.03
8	10.20	$\beta$ -PINENE	14.33
9	10.59	SABINENE	0.02
10	10.70	PINADIENE	0.02
11	11.00	$\delta$ 2-CARENE	0.02
12	11.06	TERPENE ISOMER	0.04
13	11.22	p-MENTH-2-ENE	0.04
14	11.84	$\delta$ 3-CARENE	13.36
15	12.36	$\beta$ -MYRCENE	3.73
16	12.47	$\alpha$ -PHELLANDRENE	0.11
17	12.63	psi-LIMONENE	0.19
18	12.92	o-CYMENE	0.01
19	13.01	1,4-CINEOLE	0.10
20	13.11	$\alpha$ -TERPINENE	0.42
21	14.18	LIMONENE	17.01
22	14.53	1,8-CINEOLE	1.32
23		$\beta$ -PHELLANDRENE	
24	16.45	$\gamma$ -TERPINENE	0.91
25	16.76	trans- $\beta$ -OCIMENE	0.01
26	17.76	p-CYMENE	0.42
27	18.55	TERPINOLENE	2.60
28	18.83	TERPINOLENE ISOMER	0.07
29	23.85	$\alpha$ -PINENE OXIDE	0.17
30	24.91	2-NONANONE	0.01

### GCMS ANALYSIS (cont'd,)

PRODUCT NAME: PINE SCOTCH ESSENTIAL OIL – 11120

Peak	RT (min)	Compound name	%
31	27.81	$\alpha$ ,p-DIMETHYLSTYRENE	0.04
32	28.31	LIMONENE cis-1,2-EPOXIDE	0.02
33	29.10	LIMONENE trans-1,2-EPOXIDE	0.01
34	29.61	4,8-TERPINOLENE EPOXIDE	0.05
35	31.11	$\alpha$ -CAMPHOLENAL	0.01
36	31.53	$\alpha$ -COPAENE	0.03
37	32.53	CAMPHOR	0.03
38	34.80	LINALOOL	0.05
39	35.40	1-OCTANOL	0.03
40	35.80	PINOCARVONE	0.01
41	36.14	LONGIFOLENE	0.02
42	36.61	NOPINONE	0.15
43	36.86	BORNYL ACETATE	3.93
44	36.93	ISOBORNYL ACETATE	0.01
45	37.09	METHYL THYMOL ETHER	0.02
46	37.68	CAMPHENE HYDRATE	0.02
47	37.95	$\beta$ -CARYOPHYLLENE	1.09
48	38.09	TERPINENE-4-OL	0.39
49	39.50	MYRTENAL	0.01
50	39.61	cis-p-MENTHA-2,8-DIEN-1-OL	0.01
51	41.13	trans-PINOCARVEOL	0.05
52	41.94	ISOBORNEOL	0.01
53	42.12	ESTRAGOL	0.02
54	42.26	$\alpha$ -HUMULENE	0.11
55	42.56	trans-VERBENOL	0.12
56	43.79	$\alpha$ -TERPINEOL	0.51
57	43.93	BORNEOL	0.62
58	44.12	VERBENONE	0.04
59	44.88	DODECANAL	0.02
60	44.97	p-MENTHA-1(7),2-DIEN-8-OL	0.01

## GCMS ANALYSIS (cont'd.)

PRODUCT NAME: PINE SCOTCH ESSENTIAL OIL – 11120

Peak	RT (min)	Compound name	%
61	45.19	SESQUITERPENE	0.01
62	45.63	$\alpha$ -MUUROLENE	0.04
63	45.83	$\beta$ -BISABOLENE	0.04
64	45.91	cis- $\alpha$ -BISABOLENE	0.01
65	47.44	GERANYL ACETATE	0.03
66	47.54	E,E- $\alpha$ -FARNESENE	0.02
67	49.18	MYRTENOL	0.03
68	51.44	4-ETHYL-GUAIACOL	0.01
69	51.65	trans-CARVEOL	0.02
70	52.36	p-CYMENE-8-OL	0.04
71	53.32	cis-CARVEOL	0.01
72	59.30	ISOCARYOPHYLLENE OXIDE	0.02
73	59.77	CARYOPHYLLENE OXIDE	0.07
74	71.51	Epi- $\alpha$ -BISABOLOL	0.01
75	71.64	$\alpha$ -BISABOLOL	0.03
76	75.88	COMPOUND Mw=152	0.01
		<b>TOTAL</b>	<b>100.00</b>

### Limitación de Responsabilidad

Consulta toda la información técnica relevante específica del producto antes de su uso. La información contenida en este documento se obtiene de fuentes actuales y confiables. MyLottush, proporciona la información contenida en este documento, pero no garantiza su exhaustividad o precisión. Las personas que reciben esta información deben ejercer su juicio independiente para determinar si es adecuada para un propósito particular. El usuario del producto es el único responsable del cumplimiento de todas las leyes y reglamentos aplicables al uso de los productos, incluidos los derechos de propiedad intelectual de terceros. Como los usos ordinarios o de otro tipo de este producto están fuera del control de MyLottush, no se hace ninguna representación o garantía, expresa o implícita, en cuanto a los efectos de dichos usos, (incluyendo daños o lesiones), o los resultados obtenidos. La responsabilidad de MyLottush se limita al valor de los bienes y no incluye ninguna pérdida consecuente. MyLottush no será responsable de ningún error o demora en el contenido, ni de ninguna acción tomada en base al mismo. MyLottush no será responsable de ningún daño que resulte del uso o la confianza en esta información.