

# SAFETY DATA SHEET (SDS)

Version 2.0

Revision Date : April 22,2022

Print Date : March 19, 2023

## 1. PRODUCT AND COMPANY IDENTIFICATION

---

Product name	:	Palo Santo Essential Oil - Verified By ECOCERT /Cosmos Approved
Botanical name	:	Bursera graveolens
INCI name	:	Bursera Graveolens Wood Oil
Country of Origin	:	Peru
Product use	:	Domestic and Industrial

## 2. HAZARDS IDENTIFICATION

### Emergency Overview

### GHS Classification

Flammable liquid - Category 4

Acute toxicity - Category 5

Skin irritation - Category 2

Skin Sensitization - Category 1

Aspiration Hazard - Toxicity - Category 1

Hazardous to the aquatic environment - Acute - Category 2

Hazardous to the aquatic environment - Chronic - Category 2

### GHS Label elements, including precautionary statements



Signal: Danger

### Hazard statement(s)

H227	Combustible liquid.
H303	May be harmful if swallowed.
H304	May be fatal if swallowed and enters airways.
H315	Causes skin irritation.
H317	May cause an allergic skin reaction.
H401	Toxic to aquatic life.
H411	Toxic to aquatic life with long-lasting effects.

**Precautionary statement(s)**

P210	Keep away from heat, hot surfaces, sparks, open flames and other ignition sources. No smoking.
P262	Do not get in eyes, on skin, or on clothing.
P264	Wash hands thoroughly after handling.
P272	Contaminated work clothing should not be allowed out of the workplace.
P273	Avoid release to the environment.
P280	Wear protective gloves/protective clothing/eye protection/face protection.
P301+P310	IF SWALLOWED: Immediately call a POISON CENTER or doctor/physician.
P302+P352	IF ON SKIN: Wash with plenty of soap and water.
P312	Call a POISON CENTER/ doctor/if you feel unwell.
P332+P313	If skin irritation occurs: Get medical advice/attention.
P333+P313	If skin irritation or a rash occurs: Get medical advice/attention.
P362	Take off contaminated clothing.
P363	Wash contaminated clothing before reuse.
P370+P378	In case of fire: Use foam, carbon dioxide, dry powder or water fog for extinction.
P391	Collect spillage.
P403+P235	Store in a well ventilated place. Keep cool.
P405	Store locked up.
P501	Dispose of contents and container in accordance with local, regional, national and/or international regulation for hazardous wastes.

**3. COMPOSITION / INFORMATION INGREDIENTS**

Product Name	CAS NO	EC NO	Concentration
Limonene	5989-54-8	227-815-6	30 - 60 %
Cymene	527-84-4	208-426-0	3.3 - 8.3 %
b-bisabolene	495-61-4	610-461-5	2.26 - 8.44 %
Menthofuran	494-90-6	207-795-5	1.0 - 6.9 %
Menthone	89-80-5	37-926-1	0.4 - 4.8 %

**4. FIRST AID MEASURES****Eye contact**

Immediately flush eyes with plenty of cool water for at least 15 minutes. Get medical attention if irritation occurs.

**Skin contact**

Remove contaminated clothing. Wash area with soap and water. If irritation occurs, get medical attention.

**Inhalation**

If inhaled, removed to fresh air. Get medical attention if symptoms appear.

**Ingestion**

Seek medical attention or contact local poison control center.

**5. FIRE FIGHTING MEASURES****Suitable extinguishing media**

Foam. Dry Powder. Carbon dioxide.

### **Unsuitable extinguishing media**

Water spray, water jet.

### **Special protective equipment and precautions for fire-fighters**

Wear proper protective equipment. Exercise caution when fighting any chemical fire. Use water spray or fog for cooling exposed containers.

### **Special hazards arising from the substance or its combustible products**

Carbon monoxide, unidentified organic compounds may be formed during combustion.

### **Resulting gases**

Carbon oxides.

## **6. ACCIDENTAL RELEASE MEASURES**

---

### **Personal precautions, protective equipment and emergency procedures.**

Equip clean crew with proper protection. Respiratory protection equipment may be necessary.

### **Environmental precautions**

Prevent entry to sewers and public waters. Notify authorities if product enters sewers or public waters.

### **Methods and materials for containment and cleaning up**

Clean up any spills as soon as possible, using an absorbent material to collect it. Use suitable disposal containers.

## **7. HANDLING AND STORAGE**

---

### **Precautions for safe handling**

No direct lighting. No smoking. Ensure prompt removal from eyes, skin and clothing. Wash hands and other exposed areas with mild soap and water before eating, drinking or smoking and when leaving work. Handle in accordance with good industrial hygiene and safety procedures.

### **Conditions for safe storage, including any incompatibilities**

Provide local exhaust or general room ventilation to minimize dust and/or vapour concentrations. Keep container closed when not in use.

## **8. EXPOSURE CONTROLS AND PERSONAL PROTECTION**

---

### **Eyes**

Use tightly sealed goggles.

### **Skin**

If skin contact or contamination of clothing is likely, protective clothing should be worn. Use protective gloves.

### **Respiratory**

In case of insufficient ventilation, wear suitable respiratory equipment.

### **Control parameters**

Not available.

### **Exposure limit values**

Not available

### **Biological limit values**

Not available.

## **9. PHYSICAL AND CHEMICAL PROPERTIES**

---

Appearance	:	Pale yellow liquid.
Odor	:	Intense fresh odor.

Flash point	:	>65°C
Relative density	:	0.815 to 0.865 @ 20°C
Solubility (ies)	:	Insoluble in water.
Refractive index	:	1.450 to 1.500 @ 20°C
Optical rotation	:	Not available.

## 10. STABILITY AND REACTIVITY

---

### Reactivity

This material presents no significant reactivity hazard.

### Chemical stability

Chemically stable.

### Possibility of hazardous reactions

Hazardous polymerization will not occur.

### Conditions to avoid

Avoid sparks, flame and other heat sources and extreme temperatures.

### Incompatible materials

Highly reactive materials, such as: concentrated sulfuric acid, which may produce unknown reaction products and so cause additional hazards.

### Hazardous decomposition products

Not known.

## 11. TOXICOLOGICAL INFORMATION

---

### Reproductive toxicity

No adverse effects on reproduction are known.

### Inhalation

Inhalation of high concentrations of vapor may result in irritation of eyes, nose and throat, headache, nausea, and dizziness.

### Skin contact

Adverse skin effects should be prevented by normal care and personal hygiene.

### Eye contact

Possible irritation should be prevented by wearing safety glasses.

## 12. ECOLOGICAL INFORMATION

---

### Ecotoxicity

Toxic to aquatic organisms, may cause long-term adverse effects environment. Avoid any pollution of ground, surface or underground water.

### Persistence and degradability

Not available.

### Bio - accumulative potential

Not available.

### Mobility in soil

Not available.

### Other adverse effects

Not available.

### 13. DISPOSAL CONSIDERATION

---

Dispose of product in accordance with local, state or provincial and federal regulations. Check with local municipal authority to ensure compliance.

### 14. TRANSPORT INFORMATION

---

**UN Number**

3082

**UN proper shipping name**

Environmentally hazardous substance, liquid, n.o.s. (Limonene)

**Transport hazard class**

9

**Packing group**

III

**US DOT Shipping Description (Land)**

3082

**Proper shipping name**

Environmentally hazardous substance, liquid, n.o.s. (Limonene)

**Class**

9

**Packaging group**

III

**IMO-IMDG Shipping Description (Sea)**

3082

**Proper shipping name**

Environmentally hazardous substance, liquid, n.o.s. (Limonene)

**Class**

9

**Packaging group**

III

**IATA Shipping Description (Air)**

3082

**Proper shipping name**

Environmentally hazardous substance, liquid, n.o.s. (Limonene)

**Class**

9

**Packaging group**

III

### 15. REGULATORY INFORMATION

---

**California Proposition 65**

- This product can expose you to beta-Mycrene, which is known to the State of California to cause cancer. For more information go to [www.P65Warnings.ca.gov](http://www.P65Warnings.ca.gov).
- This product can expose you to Pulegone, which is known to the State of California to cause cancer. For more information go to [www.P65Warnings.ca.gov](http://www.P65Warnings.ca.gov).

**GHS Hazard Statements**

Please refer to section 2.

**GHS Precautionary Statements**

Please refer to section 2.

**16. OTHER INFORMATION**

---

Revision date : April 22,2022

## CERTIFICATE OF ANALYSIS

**Product** : **Palo Santo Essential Oil - Verified by ECOCERT / Cosmos Approved**

Lot No : 11264A11222

Best Before : December, 2024

### Properties

### Specifications

### Results

Appearance : Pale yellow liquid. Complies

Odor : Intense fresh odor. Complies

Solubility : Insoluble in water. Complies

Specific Gravity : 0.857 to 0.873 @ 20°C Complies

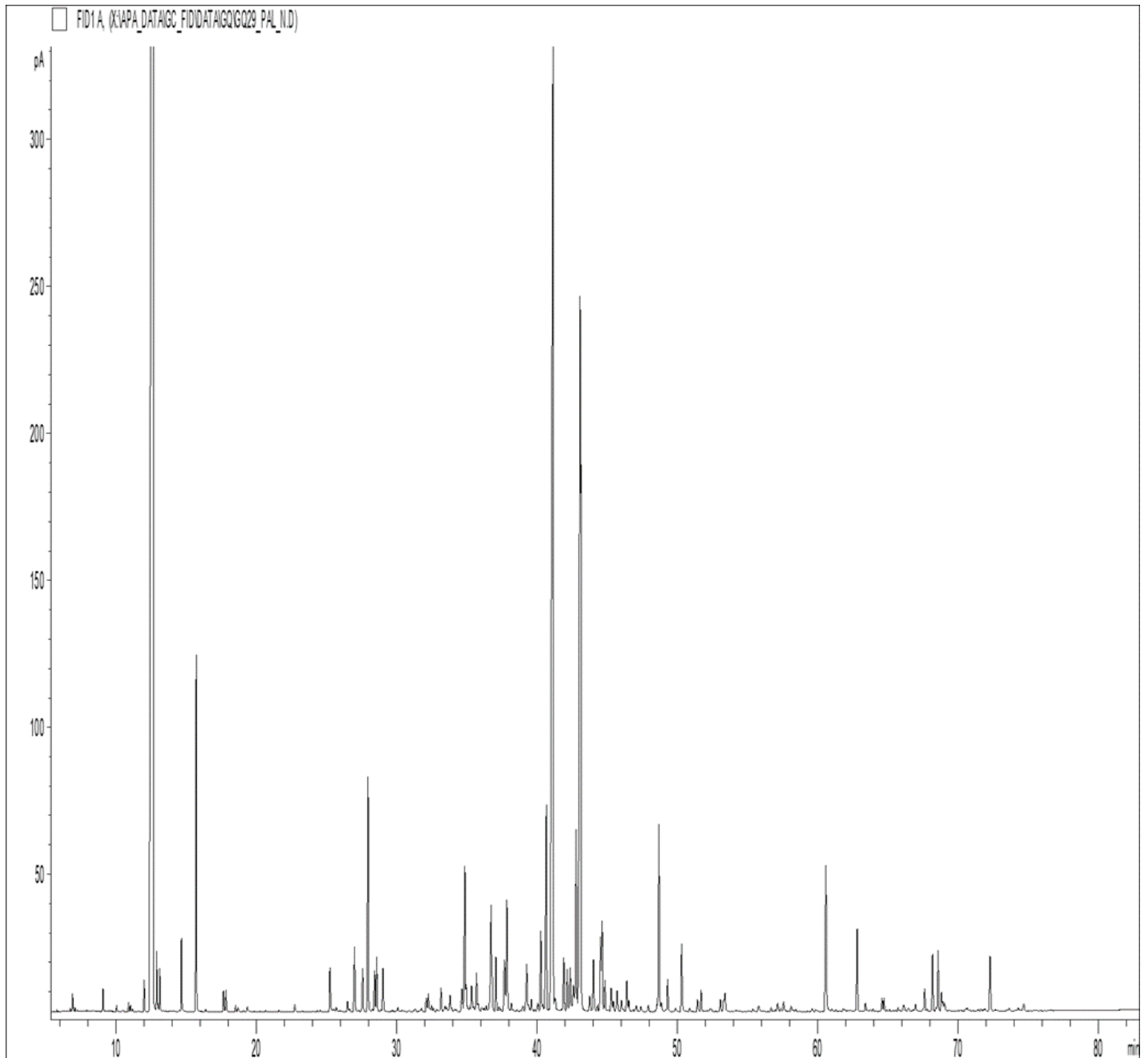
Refractive Index : 1.4627 to 1.4827 @ 20°C Complies

D-Limonene : ----- 61.22%

**GCMS ANALYSIS**

**PRODUCT NAME: PALO SANTO ESSENTIAL OIL -VERIFIED BY ECOCERT/COSMOS APPROVED – 11264**

**DATE: March 8,2022**



*Due to volume turnover, this report is not lot specific, It is representative of the quality of this oil produced by the manufacturer of this product, Specific lots may vary slightly as is the case in natural products,*



GCMS ANALYSIS (cont'd.)

PRODUCT NAME: PALO SANTO ESSENTIAL OIL -VERIFIED BY ECOCERT/COSMOS APPROVED – 11264

Peak	RT (min)	Compound name	%
1	6,89	alpha-PINENE	0,08
2	9,05	MENTHENE ISOMER	0,11
3	10,03	p-MENTH-2-ENE	0,03
4	10,89	beta-MYRCENE	0,05
5	11,02	alpha-PHELLANDRENE	0,04
6	11,99	2,3-DEHYDRO-1,8-CINEOLE	0,20
7	12,67	<b>LIMONENE</b>	<b>44,09</b>
8	12,90	1,8-CINEOLE	0,28
9	12,97	CYCLOPENTANONE-3-METHYL	0,05
10	13,11	1,3,8-p-MENTHATRIENE	0,22
11	14,65	MENTHATRIENE ISOMER	0,41
12	15,71	p-CYMENE	1,99
13	17,66	ETHANONE CYCLOHEXYL ISOMER	0,14
14	17,83	ETHANONE CYCLOHEXYL ISOMER	0,15
15	18,51	PINOL	0,04
16	18,68	CYCLOHEXANONE,3-METHYL	0,04
17	19,35	5-HEPTEN-2-ONE, 6-METHYL-	0,04
18	22,73	COSMENE ISOMER	0,06
19	25,24	alpha,p-DIMETHYLSTYRENE	0,35
20	25,54	LINALOOL cis-OXIDE	0,03
21	25,70	SESQUITERPENE	0,04
22	26,50	LIMONENE trans-1,2-EPOXIDE	0,08
23	26,99	alpha-CUBEBENE	0,08
24	27,00	MENTHONE	0,36
25	27,58	delta-ELEMENE	0,35
26	27,96	MENTHOFURAN	1,63
27	28,43	YLANGENE	0,31
28	28,58	ISOMENTHONE	0,39
29	29,02	alpha-COPAENE	0,34
30	30,08	SESQUITERPENE	0,03

GCMS ANALYSIS (cont'd.)

PRODUCT NAME: PALO SANTO ESSENTIAL OIL -VERIFIED BY ECOCERT/COSMOS APPROVED – 11264

Peak	RT (min)	Compound name	%
31	31,32	SESQUITERPENE	0,04
32	31,78	SESQUITERPENE	0,05
33	32,11	LINALOOL	0,12
34	32,26	4-ACETYLI-1-METHYLCYCLOHEXENE	0,16
35	32,48	COMPOUND Mw=150	0,05
36	32,62	LIMONENE cis-8,9-EPOXIDE	0,04
37	33,16	COMPOUND Mw=206	0,21
38	33,45	alpha-CEDRENE	0,07
39	33,57	SESQUITERPENE	0,04
40	33,81	epsilon-CADINENE	0,19
41	34,23	ISOPULEGONE	0,03
42	34,65	METHYL THYMOL ETHER	0,21
43	34,86	beta-ELEMENE	1,13
44	34,96	alpha-trans-BERGAMOTENE	0,23
45	24,99	SESQUITERPENE	0,23
46	35,21	SESQUITERPENE	0,04
47	35,34	TERPINENE-4-OL	0,25
48	35,50	SESQUITERPENE	0,04
49	35,69	Cis-DIHYDROCARVONE	0,31
50	35,80	SESQUITERPENE	0,08
51	36,06	ALIPHATIC ESTER	0,06
52	36,23	trans-DIHYDROCARVONE	0,04
53	36,40	THUYOPSENE	0,05
54	36,73	Cis-p-2,8-MENTHADIEN-1-OL	0,40
55	36,79	SESQUITERPENE	0,87
56	37,08	Cis-beta-TERPINEOL	0,40
57	37,31	SESQUITERPENE	0,05
58	37,42	SESQUITERPENE	0,03
59	37,69	MENTHOL + COMPOUND Mw=170	0,53
60	37,86	PULEGONE	0,92

GCMS ANALYSIS (cont'd.)

PRODUCT NAME: PALO SANTO ESSENTIAL OIL -VERIFIED BY ECOCERT/COSMOS APPROVED – 11264

Peak	RT (min)	Compound name	%
61	38,18	AROMATIC COMPOUND	0,08
62	39,01	SESQUITERPENE	0,07
63	39,27	Trans-p-2,8-MENTHADIEN-1-OL	0,50
64	39,60	SESQUITERPENE	0,11
65	40,06	SESQUITERPENE	0,10
66	40,28	LAVANDULAL	0,60
67	40,42	SESQUITERPENE	0,07
68	40,67	gamma-MUUROLENE	1,90
69	41,15	<b>alpha-TERPINEOL</b>	<b>12,21</b>
70	41,28	SESQUITERPENE	0,21
71	41,91	GERMACRENE D	0,45
72	42,17	SESQUITERPENE	0,33
73	42,38	SESQUITERPENE	0,39
74	42,60	beta-SELINENE	0,31
75	41,05	SESQUITERPENE	0,15
76	42,80	alpha-DIHYDRO-AGAROFURAN	1,47
77	43,08	<b>beta-BISABOLENE</b>	<b>7,43</b>
78	43,15	CARVONE	2,42
79	43,76	Cis-ISOPIPERITENOL	0,14
80	44,03	Trans-ISOPIPERITENOL	0,48
81	44,32	SESQUITERPENE	0,05
82	44,54	delta-CADINENE	0,58
83	44,64	gamma-CADINENE	0,76
84	44,85	p-METHYLACETOPHENONE	0,27
85	45,29	MENTHADIENOL ISOMER	0,23
86	45,45	alpha-CURCUMENE	0,08
87	45,72	PERILLALDEHYDE	0,21
88	46,02	SESQUITERPENE	0,11
89	46,16	SESQUITERPENE	0,03
90	46,41	trans-p-MENTHA-1,8-DIEN-2-OL	0,25

GCMS ANALYSIS (cont'd.)

PRODUCT NAME: PALO SANTO ESSENTIAL OIL -VERIFIED BY ECOCERT/COSMOS APPROVED – 11264

Peak	RT (min)	Compound name	%
91	46,55	SESQUITERPENE	0,09
92	46,86	AROMATIC COMPOUND	0,03
93	47,09	AROMATIC COMPOUND Mw=160	0,08
94	47,95	CUPARENE	0,06
95	48,56	SESQUITERPENIC EPOXIDE	0,04
96	48,69	trans-CARVEOL	1,50
97	48,87	trans-CALAMENENE	0,09
98	49,31	p-CYMENE-8-OL	0,24
99	49,89	exo-2-HYDROXYCINEOLE	0,05
100	50,32	Cis-CARVEOL	0,54
101	50,89	COMPOUND Mw=220	0,03
102	51,45	cis-p-MENTHA-1,8-DIEN-2-OL	0,10
103	51,70	alpha-AGAROFURANE	0,16
104	53,08	PHENOLIC COMPOUND	0,09
105	53,31	alpha-CALACORENE	0,07
106	53,41	COMPOUND Mw=220	0,20
107	55,40	beta-CALACORENE	0,03
108	55,81	ALIPHATIC ESTER	0,07
109	56,69	SESQUITERPENOL	0,03
110	57,16	LIMONENE-10-OL	0,08
111	57,38	AROMATIC COMPOUND	0,03
112	57,59	AROMATIC COMPOUND	0,10
113	58,12	AROMATIC COMPOUND	0,07
114	60,60	JUNEOL	1,33
115	61,02	SESQUITERPENOL	0,03
116	61,84	SESQUITERPENOL	0,03
117	62,84	10-epi-gamma-EUDESOL	0,65
118	63,42	AROMATIC COMPOUND	0,07
119	64,60	PYRANIC COMPOUND	0,10
120	64,74	BISABOLOL OXIDE B	0,10

### GCMS ANALYSIS (cont'd.)

PRODUCT NAME: PALO SANTO ESSENTIAL OIL -VERIFIED BY ECOCERT/COSMOS APPROVED – 11264

Peak	RT (min)	Compound name	%
121	65,75	AROMATIC COMPOUND	0,03
122	66,16	SESQUITERPENOL	0,09
123	66,50	PHENOLIC COMPOUND	0,05
124	66,99	AROMATIC COMPOUND	0,07
125	67,64	alpha-MUUROLOL	0,20
126	68,21	VALERIANOL	0,45
127	68,46	CADALENE	0,03
128	68,60	alpha-BISABOLOL	0,44
129	68,84	4-HYDROXY-DIHYDRO-alpha-AGAROFURAN	0,16
130	68,94	SESQUITERPENOL	0,08
131	69,07	alpha-CADINOL	0,07
132	70,67	AROMATIC COMPOUND Mw=164	0,03
133	71,94	SESQUITERPENOL	0,03
134	72,31	MINT LACTONE Mw=166	0,48
135	73,66	AROMATIC COMPOUND	0,03
136	74,31	AROMATIC COMPOUND	0,03
137	74,70	MINT LACTONE ISOMER	0,09
		<b>TOTAL</b>	<b>99,09</b>

#### **Limitación de Responsabilidad**

Consulta toda la información técnica relevante específica del producto antes de su uso. La información contenida en este documento se obtiene de fuentes actuales y confiables. MyLottush, proporciona la información contenida en este documento, pero no garantiza su exhaustividad o precisión. Las personas que reciben esta información deben ejercer su juicio independiente para determinar si es adecuada para un propósito particular. El usuario del producto es el único responsable del cumplimiento de todas las leyes y reglamentos aplicables al uso de los productos, incluidos los derechos de propiedad intelectual de terceros. Como los usos ordinarios o de otro tipo de este producto están fuera del control de MyLottush, no se hace ninguna representación o garantía, expresa o implícita, en cuanto a los efectos de dichos usos, (incluyendo daños o lesiones), o los resultados obtenidos. La responsabilidad de MyLottush se limita al valor de los bienes y no incluye ninguna pérdida consecuente. MyLottush no será responsable de ningún error o demora en el contenido, ni de ninguna acción tomada en base al mismo. MyLottush no será responsable de ningún daño que resulte del uso o la confianza en esta información.