

SAFETY DATA SHEET (SDS)

Version 2.0

Revision Date : April 21,2022

Print Date : March 12, 2023

1. PRODUCT AND COMPANY IDENTIFICATION

Product name	:	Cinnamon Leaf Essential Oil
Botanical name	:	Cinnamomum zeylanicum
Synonyms	:	Cinnamomum verum
INCI name	:	Cinnamomum Zeylanicum Leaf Oil
CAS #	:	84649-98-9/8015-91-6
Country of Origin	:	Sri Lanka
EINECS #	:	283-479-0
Product use	:	Domestic and Industrial
	:	
	:	
	:	
	:	
	:	
	:	

2. HAZARDS IDENTIFICATION

Emergency Overview

GHS Classification

Acute toxicity - Oral - Category 4

Skin irritation - Category 3

Skin sensitization - Category 1

Serious eye irritation - Category 2A

Specific target organ toxicity - single exposure - Category 3

Germ cell mutagenicity - Category 1A, 1B

Carcinogenicity - Category 1A, 1B

Hazardous to the aquatic environment, long-term hazard - Category 2

GHS Label elements, including precautionary statements



Signal: Danger

Hazard statement(s)

H302	Harmful if swallowed.
H315	Causes skin irritation.
H317	May cause an allergic skin reaction.
H319	Causes serious eye irritation.
H335	May cause respiratory irritation.
H341	Suspected of causing genetic defects.
H350	May cause cancer.
H411	Toxic to aquatic life with long-lasting effects.

Precautionary statement(s)

P201	Obtain special instructions before use.
P202	Do not handle until all safety precautions have been read and understood.
P261	Avoid breathing dust/fumes/gas/mist/vapours/spray.
P264	Wash SKIN thoroughly after handling.
P270	Do not eat, drink or smoke when using this product.
P272	Contaminated work clothing should not be allowed out of the workplace.
P273	Avoid release to the environment.
P280	Wear protective gloves/protective clothing/eye protection/face protection.
P281	Use personal protective equipment as required.
P301+P312	IF SWALLOWED: Call a POISON CENTER/doctor/if you feel unwell.
P302+P352	IF ON SKIN: Wash with plenty of water.
P305+P351+P338	IF IN EYES: Rinse cautiously with water for several minutes. Remove contact lenses if present and easy to do – continue rinsing.
P308+P313	If exposed: Call a POISON CENTER or doctor/physician.
P321	Specific treatment (see SECTION 4 on this label).
P330	Rinse mouth.
P332+P313	If skin irritation occurs: Get medical advice/attention.
P333+P313	If skin irritation or a rash occurs: Get medical advice/attention.
P337+P313	If eye irritation persists get medical advice/attention.
P362	Take off contaminated clothing.
P363	Wash contaminated clothing before reuse.
P405	Store locked up.
P501	Dispose of contents/container according to local regulations.

3. COMPOSITION / INFORMATION INGREDIENTS

Product Name	CAS NO	EC NO	Concentration
Eugenol	97-53-0	-	70 - 85 %
Benzyl benzoate	120-51-4	-	< 4 %
Cinnamaldehyde	104-55-2	-	< 3 %
Cinnamyl Alcohol	104-54-1	-	< 1 %
Eugenol Acetate	93-28-7	-	0.5 - 5 %
Benzaldehyde	100-52-7	-	< 0.20 %

4. FIRST AID MEASURES

Eye contact

Immediately flush eyes with plenty of cool water for at least 15 minutes. Get medical attention if irritation occurs.

Skin contact

Remove contaminated clothing. Wash area with soap and water. If irritation occurs, get medical attention.

Inhalation

If inhaled, removed to fresh air. Get medical attention if symptoms appear.

Ingestion

Seek medical attention or contact local poison control center.

5. FIRE FIGHTING MEASURES**Suitable extinguishing media**

Foam. Dry Powder. Carbon dioxide.

Unsuitable extinguishing media

Water spray, water jet.

Special protective equipment and precautions for fire-fighters

Wear proper protective equipment. Exercise caution when fighting any chemical fire. Use water spray or fog for cooling exposed containers.

Special hazards arising from the substance or its combustible products

Hazardous decomposition products may be formed at extreme heat or if burned.

Resulting gases

Carbon oxides.

6. ACCIDENTAL RELEASE MEASURES**Personal precautions, protective equipment and emergency procedures.**

Equip clean crew with proper protection. Respiratory protection equipment may be necessary.

Environmental precautions

Prevent entry to sewers and public waters. Notify authorities if product enters sewers or public waters.

Methods and materials for containment and cleaning up

Clean up any spills as soon as possible, using an absorbent material to collect it. Use suitable disposal containers.

7. HANDLING AND STORAGE**Precautions for safe handling**

No direct lighting. No smoking. Ensure prompt removal from eyes, skin and clothing. Wash hands and other exposed areas with mild soap and water before eating, drinking or smoking and when leaving work. Handle in accordance with good industrial hygiene and safety procedures.

Conditions for safe storage, including any incompatibilities

Provide local exhaust or general room ventilation to minimize dust and/or vapour concentrations. Keep container closed when not in use.

8. EXPOSURE CONTROLS AND PERSONAL PROTECTION**Exposure controls**

Face shield and safety glasses Use equipment for eye protection tested and approved under appropriate government standards such as NIOSH (US) or EN 166(EU). The type of protective equipment must be selected according to the concentration and amount of the dangerous substance at the specific workplace.

Eyes

Use tightly sealed goggles.

Skin

If skin contact or contamination of clothing is likely, protective clothing should be worn. Use protective gloves.

Respiratory

In case of insufficient ventilation, wear suitable respiratory equipment.

Ingestion

Not for ingestion.

9. PHYSICAL AND CHEMICAL PROPERTIES

Appearance	:	Pale amber to dark brown liquid.
Odor	:	Characteristic cinnamon odor.
Initial b.p and boiling range	:	194 to 234 °C
Flash point	:	87.8°C
Relative density	:	1.0300 to 1.0500 @ 30 °C
Solubility (ies)	:	Soluble in alcohol and oils. Insoluble in water.
Refractive index	:	1.5290 to 1.5400 @ 25 °C
Optical rotation	:	0.0° to +2.0° @ 27 °C

10. STABILITY AND REACTIVITY

Reactivity

This material presents no significant reactivity hazard.

Chemical stability

Chemically stable.

Conditions to avoid

Avoid sparks, flame and other heat sources.

Incompatible materials

Strong oxidizing agents.

Hazardous decomposition products

Carbon Oxides.

11. TOXICOLOGICAL INFORMATION

Acute toxicity

LD50 Oral - Rat - 2,650 mg/kg

LD50 Dermal - Rabbit - > 5,000 mg/kg

Chronic toxicity

May cause allergic reactions on skin.

Inhalation

Inhalation of high concentrations of vapor may result in irritation of eyes, nose and throat, headache, nausea, and dizziness.

Skin contact

Adverse skin effects should be prevented by normal care and personal hygiene.

Eye contact

Possible irritation should be prevented by wearing safety glasses.

Ingestion

Low order toxicity causing irritation of the stomach and intestines which results in nausea and vomiting

Repeated exposure

Repeated or prolonged contact may cause redness, irritation and scaling of skin (Dermatitis).

12. ECOLOGICAL INFORMATION

Ecotoxicity

Toxic to aquatic organisms, may cause long-term adverse effects environment. Avoid any pollution of ground, surface or underground water.

Bio - accumulative potential

Not available.

13. DISPOSAL CONSIDERATION

Dispose of product in accordance with local, state or provincial and federal regulations. Check with local municipal authority to ensure compliance.

14. TRANSPORT INFORMATION

US DOT Shipping Description (Land)

Not regulated.

IMO-IMDG Shipping Description (Sea)

Not regulated.

IATA Shipping Description (Air)

Not regulated.

Emergency action in case of accident

Notify police and fire department immediately

15. REGULATORY INFORMATION

California Proposition 65

- This product can expose you to Methyleugenol, which is known to the State of California to cause cancer. For more information go to www.P65Warnings.ca.gov.
- This product can expose you to beta-Mycrene, which is known to the State of California to cause cancer. For more information go to www.P65Warnings.ca.gov.
- This product can expose you to Safrole, which is known to the State of California to cause cancer. For more information go to www.P65Warnings.ca.gov.

GHS Hazard Statements

Please refer to Section 2.

GHS Precautionary Statements

Please refer to Section 2.

16. OTHER INFORMATION

Revision date : April 21,2022

CERTIFICATE OF ANALYSIS

Product : **Cinnamon Leaf Essential Oil**

Lot No : 11034A10822

Best Before : February, 2025

<u>Properties</u>	<u>Specifications</u>	<u>Results</u>
Appearance	: Pale amber to dark brown liquid.	Complies
Odor	: Characteristic cinnamon odor	Complies
Solubility	: Insoluble in water.	Complies
Specific Gravity	: 1.0300 to 1.0590 @ 20°C	1.0440
Optical Rotation	: -2.50° to +2.0° @25°C	0.962°
Refractive Index	: 1.5200 to 1.5400 @ 25°C	1.5334
Eugenol	: 70.0 - 85.0 %	76.66
Eugenol acetate	: 0.50 - 8.00 %	1.95

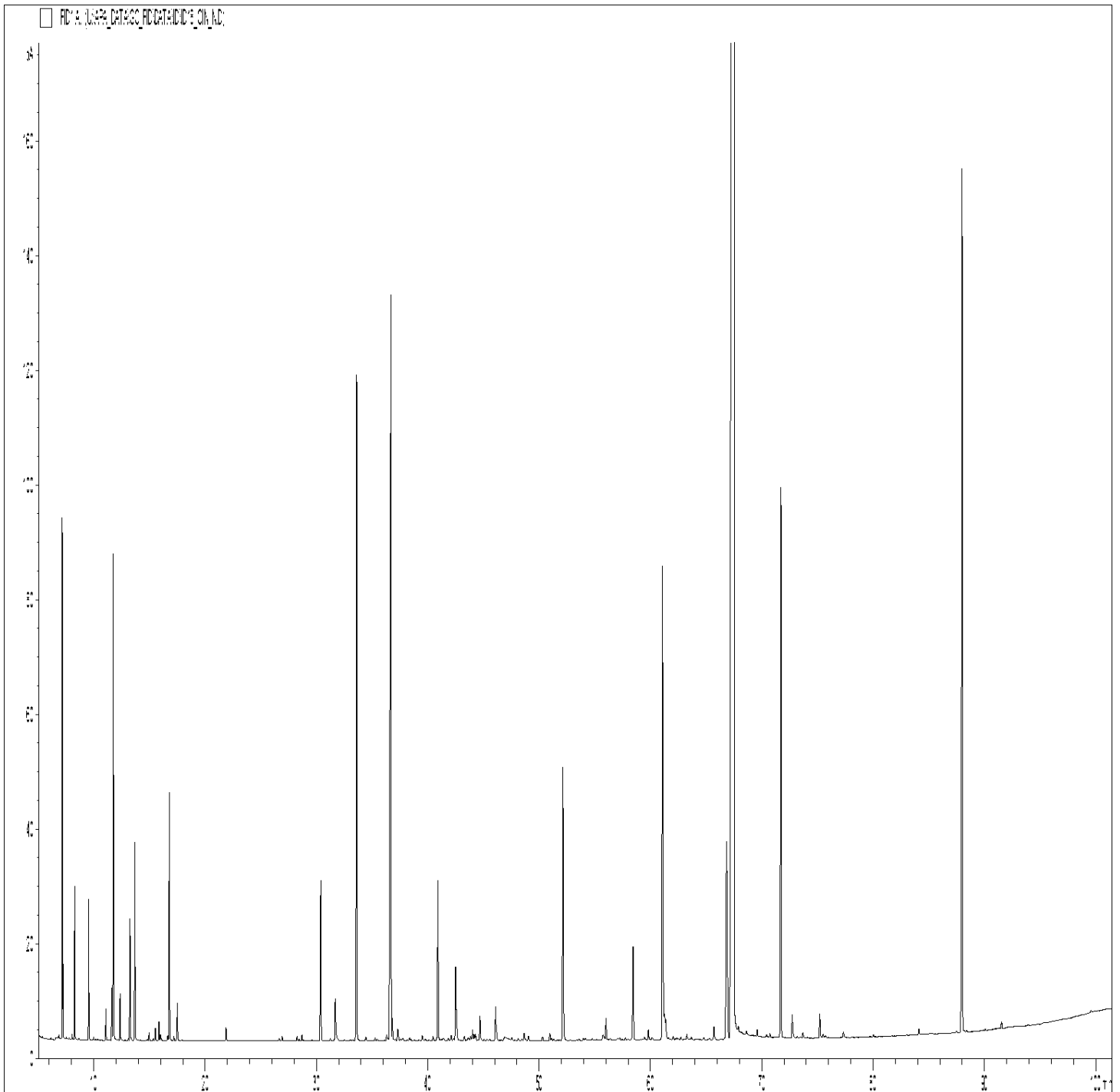
Limitación de Responsabilidad

Consulta toda la información técnica relevante específica del producto antes de su uso. La información contenida en este documento se obtiene de fuentes actuales y confiables. Lottush, proporciona la información contenida en este documento, pero no garantiza su exhaustividad o precisión. Las personas que reciben esta información deben ejercer su juicio independiente para determinar si es adecuada para un propósito particular. El usuario del producto es el único responsable del cumplimiento de todas las leyes y reglamentos aplicables al uso de los productos, incluidos los derechos de propiedad intelectual de terceros. Como los usos ordinarios o de otro tipo de este producto están fuera del control de Lottush, no se hace ninguna representación o garantía, expresa o implícita, en cuanto a los efectos de dichos usos, (incluyendo daños o lesiones), o los resultados obtenidos. La responsabilidad de Lottush se limita al valor de los bienes y no incluye ninguna pérdida consecuente. Lottush no será responsable de ningún error o demora en el contenido, ni de ninguna acción tomada en base al mismo. Lottush no será responsable de ningún daño que resulte del uso o la confianza en esta información.

GCMS ANALYSIS

PRODUCT NAME: CINNAMON LEAF ESSENTIAL OIL - 11034

DATE: August 23, 2022



Due to volume turnover, this report is not lot specific, It is representative of the quality of this oil produced by the manufacturer of this product, Specific lots may vary slightly as is the case in natural products,

GCMS ANALYSIS (cont'd.)

PRODUCT NAME: CINNAMON LEAF ESSENTIAL OIL - 11034

Peak	RT (min)	Compound	%
1	6.85	TRICYCLEN	0.01
2	7.16	α -PINENE	0.89
3	7.22	α -THUYENE	0.13
4	8.04	α -FENCHENE	0.02
5	8.27	CAMPHE	0.29
6	9.54	β -PINENE	0.29
7	11.06	δ 3-CARENE	0.07
8	11.60	β -MYRCENE	0.12
9	11.74	α -PHELLANDRENE	1.09
10	12.35	α -TERPINENE	0.11
11	13.23	LIMONENE	0.29
12	13.68	1,8-CINEOLE	0.49
13		β -PHELLANDRENE	
14	14.96	cis- β -OCIMENE	0.02
15	15.52	γ -TERPINENE	0.03
16	15.84	trans- β -OCIMENE	0.05
17	15.98	STYRENE	0.02
18	16.62	m-CYMENE	0.01
19	16.77	p-CYMENE	0.63
20	17.18	ISOTERPINOLENE	0.01
21	17.49	TERPINOLENE	0.12
22	21.87	2-PENTANONE, 4-HYDROXY-4-METHYL-	0.04
23	26.64	α ,p-DIMETHYLSTYRENE	0.01
24	26.92	LINALOOL cis-OXIDE	0.01
25	28.24	α -CUBEBENE	0.02
26	28.69	LINALOOL trans-OXIDE	0.02
27	30.37	α -COPAENE	0.52
28	31.24	CAMPHOR	0.01
29	31.67	BENZALDEHYDE	0.19
30	33.62	LINALOOL	2.04

GCMS ANALYSIS (cont'd.)

PRODUCT NAME: CINNAMON LEAF ESSENTIAL OIL - 11034

Peak	RT (min)	Compound	%
31	34.45	trans-p-MENTH-2-EN-1-OL	0.01
32	35.29	ISOCARYOPHYLLENE	0.01
33	36.32	β -ELEMENE	0.03
34	36.69	β-CARYOPHYLLENE	3.27
35	36.83	TERPINENE-4-OL	0.08
36	37.30	AROMADENDRENE	0.05
37	37.77	HOTRIENOL	0.01
38	38.37	cis-p-MENTH-2-EN-1-OL	0.02
39	39.52	SESQUITERPENE	0.02
40	40.47	ZONARENE	0.02
41	40.92	α -HUMULENE	0.55
42	41.42	CARVOTANACETONE	0.02
43	41.84	LAVANDULAL	0.01
44	42.12	γ -MUUROLENE	0.02
45	42.51	α -TERPINEOL	0.24
46	42.57	BORNEOL	0.07
47	43.30	GERMACRENE D	0.02
48	43.64	SESQUITERPENE	0.01
49	43.84	β -SELINENE	0.02
50	44.04	BENZYL ACETATE	0.04
51	44.18	α -SELINENE	0.02
52	44.30	α -MUUROLENE	0.02
53	44.70	BICYCLOGERMACRENE	0.09
54	46.10	δ -CADINENE	0.12
55	46.18	γ -CADINENE	0.03
56	46.94	BENZENEPROPANAL	0.07
57	47.57	CADINA-1,4-DIENE	0.02
58	48.13	α -AMORPHENE	0.01
59	48.67	trans-SABINOL	0.04
60	49.05	2-PHENYLETHYL ACETATE	0.02

GCMS ANALYSIS (cont'd.)

PRODUCT NAME: CINNAMON LEAF ESSENTIAL OIL - 11034

Peak	RT (min)	Compound	%
61	50.32	CALAMENENE	0.01
62	50.97	p-CYMENE-8-OL	0.02
63	51.11	GERANIOL	0.01
64	52.15	SAFROLE	0.98
65	54.17	PHENYLETHYL ALCOHOL	0.02
66	55.74	ALIPHATIC COMPOUND	0.03
67	56.01	BENZENE PROPANOL ACETATE	0.08
68	58.46	CARYOPHYLLENE OXIDE	0.37
69	59.82	METHYLEUGENOL	0.03
70	61.09	E-CINNAMALDEHYDE	1.93
71	61.22	PROPANOL, 3-PHENYL-	0.12
72	61.38	EPOXY-6,7-HUMULENE	0.10
73	62.05	Epi-CUBENOL	0.01
74	62.75	CUBENOL	0.01
75	63.28	GLOBULOL	0.02
76	65.71	SPATHULENOL	0.05
77	66.87	CINNAMYL ACETATE	1.23
78	67.52	EUGENOL	76.66
79	68.64	T-CADINOL	0.03
80	69.60	CARVACROL	0.02
81	70.46	α -NOOTKATOL	0.03
82	70.74	α -CADINOL	0.04
83	71.74	EUGENYL ACETATE	1.95
84	72.76	CINNAMIC ALCOHOL	0.10
85	73.71	CARYOPHYLLA-2,6-DIEN-5- α -OL	0.02
86	75.22	CHAVICOL	0.09
87	75.53	SESQUITERPENIC OXIDE	0.01
88	77.34	SESQUITERPENIC OXIDE	0.03
89	84.12	EUGENOL, METHOXY-	0.02
90	88.01	BENZYL BENZOATE	3.35

GCMS ANALYSIS (cont'd,)

PRODUCT NAME: CINNAMON LEAF ESSENTIAL OIL - 11034

Peak	RT (min)	Compound	%
91	91.55	2-PHENYLETHYL BENZOATE	0.03
		TOTAL	99.89

Limitación de Responsabilidad

Consulta toda la información técnica relevante específica del producto antes de su uso. La información contenida en este documento se obtiene de fuentes actuales y confiables. Lottush, proporciona la información contenida en este documento, pero no garantiza su exhaustividad o precisión. Las personas que reciben esta información deben ejercer su juicio independiente para determinar si es adecuada para un propósito particular. El usuario del producto es el único responsable del cumplimiento de todas las leyes y reglamentos aplicables al uso de los productos, incluidos los derechos de propiedad intelectual de terceros. Como los usos ordinarios o de otro tipo de este producto están fuera del control de Lottush, no se hace ninguna representación o garantía, expresa o implícita, en cuanto a los efectos de dichos usos, (incluyendo daños o lesiones), o los resultados obtenidos. La responsabilidad de Lottush se limita al valor de los bienes y no incluye ninguna pérdida consecuenta. Lottush no será responsable de ningún error o demora en el contenido, ni de ninguna acción tomada en base al mismo. Lottush no será responsable de ningún daño que resulte del uso o la confianza en esta información.