

# SAFETY DATA SHEET (SDS)

Version 2.0

Revision Date : April 22,2022

Print Date : March 18, 2023

## 1. PRODUCT AND COMPANY IDENTIFICATION

---

Product name	:	Ho Wood Essential Oil
Botanical name	:	Cinnamomum camphora
INCI name	:	Cinnamomum Camphora Branch/Leaf Oil
CAS #	:	92201-50-8
Country of Origin	:	China
EINECS #	:	295-980-1
Product use	:	Domestic and Industrial

## 2. HAZARDS IDENTIFICATION

---

### Emergency Overview

### GHS Classification

Flammable liquids - Category 4

Acute toxicity, Oral - Category 5

Skin irritation - Category 2

Eye irritation - Category 2A

Specific Target Organ Toxicity - Single Exposure - Category 3

### GHS Label elements, including precautionary statements



Signal: Warning

### Hazard statement(s)

H227	Combustible liquid.
H303	May be harmful if swallowed.
H315	Causes skin irritation.
H319	Causes serious eye irritation.
H335	May cause respiratory irritation.

### Precautionary statement(s)

P210	Keep away from heat, hot surfaces, sparks, open flames and other ignition sources. No smoking.
P264	Wash hands thoroughly after handling.
P272	Contaminated work clothing should not be allowed out of the workplace.
P273	Avoid release to the environment.
P280	Wear protective gloves/protective clothing/eye protection/face protection.
P301+P310	IF SWALLOWED: Immediately call a POISON CENTER or doctor/physician.
P302+P352	IF ON SKIN: Wash with plenty of soap and water.
P305+P351+P338	IF IN EYES: Rinse cautiously with water for several minutes. Remove contact lenses if present and easy to do – continue rinsing.
P332+P313	If skin irritation occurs: Get medical advice/attention.
P333+P313	If skin irritation or a rash occurs: Get medical advice/attention.
P337+P313	If eye irritation persists get medical advice/attention.
P402+P404	Store in a dry place. Store in a closed container.
P501	Dispose of contents and container in accordance with local, regional, national and/or international regulation for hazardous wastes.

### 3. COMPOSITION / INFORMATION INGREDIENTS

Product Name	CAS NO	EC NO	Concentration
Cinnamomum Camphora Bark Oil	92201-50-8 / 8022-91-1 / 8008-51-3	295-980-1	100 %

### 4. FIRST AID MEASURES

#### Eye contact

Immediately flush eyes with plenty of cool water for at least 15 minutes. Get medical attention if irritation occurs.

#### Skin contact

Remove contaminated clothing. Wash area with soap and water. If irritation occurs, get medical attention.

#### Inhalation

If inhaled, removed to fresh air. Get medical attention if symptoms appear.

#### Ingestion

Seek medical attention or contact local poison control center.

### 5. FIRE FIGHTING MEASURES

#### Suitable extinguishing media

Foam. Dry Powder. Carbon dioxide.

#### Unsuitable extinguishing media

Water spray, water jet.

#### Special protective equipment and precautions for fire-fighters

Wear proper protective equipment. Exercise caution when fighting any chemical fire. Use water spray or fog for cooling exposed containers.

#### Special hazards arising from the substance or its combustible products

Hazardous decomposition products may be formed at extreme heat or if burned.

#### Resulting gases

Carbon oxides.

## 6. ACCIDENTAL RELEASE MEASURES

---

### Personal precautions, protective equipment and emergency procedures.

Equip clean crew with proper protection. Respiratory protection equipment may be necessary.

### Environmental precautions

Prevent entry to sewers and public waters. Notify authorities if product enters sewers or public waters.

### Methods and materials for containment and cleaning up

Clean up any spills as soon as possible, using an absorbent material to collect it. Use suitable disposal containers.

## 7. HANDLING AND STORAGE

---

### Precautions for safe handling

No direct lighting. No smoking. Ensure prompt removal from eyes, skin and clothing. Wash hands and other exposed areas with mild soap and water before eating, drinking or smoking and when leaving work. Handle in accordance with good industrial hygiene and safety procedures.

### Conditions for safe storage, including any incompatibilities

Store the containers in a dry and well ventilated place, far from sources of heat and direct solar light. Keep far away from ignition points. Keep away from oxidizing agents and from highly acidic or alkaline materials. Do not smoke. Once the containers are open, they must be carefully closed and placed vertically to prevent spills.

## 8. EXPOSURE CONTROLS AND PERSONAL PROTECTION

---

### Exposure controls

Provide exhaust ventilation or other engineering controls to keep the airborne concentrations of vapors below their respective threshold limit value. Ensure that eye wash stations and safety showers are proximal to the work-station location.

### Eyes

Use tightly sealed goggles.

### Skin

If skin contact or contamination of clothing is likely, protective clothing should be worn. Use protective gloves.

### Respiratory

In case of insufficient ventilation, wear suitable respiratory equipment.

### Ingestion

Not for ingestion.

## 9. PHYSICAL AND CHEMICAL PROPERTIES

---

Appearance	:	Pale yellow liquid.
Odor	:	Characteristic linalool odor.
Flash point	:	75°C
Relative density	:	0.857 to 0.867 @ 25°C
Solubility (ies)	:	Soluble in alcohol and oils. Insoluble in water.
Auto-ignition temperature	:	235 °C
Refractive index	:	1.4610 to 1.4670 @ 20°C
Optical rotation	:	-22° to -12° @ 20°C

## 10. STABILITY AND REACTIVITY

---

### Reactivity

This material presents no significant reactivity hazard.

**Chemical stability**

Chemically stable.

**Possibility of hazardous reactions**

Hazardous polymerization will not occur.

**Conditions to avoid**

Avoid sparks, flame and other heat sources.

**Incompatible materials**

Strong oxidizing agents.

**Hazardous decomposition products**

Carbon Oxides.

---

**11. TOXICOLOGICAL INFORMATION**

**Acute toxicity**

Oral [mouse] LD50 = 3mg/kg

Oral [rat] LD50 = 2790 mg/kg

Skin [rabbit] LD50 = 5610 mg/kg

Skin [rat] LD50 = 5610 mg/kg

**Chronic toxicity**

May cause allergic reactions on skin.

**Inhalation**

Inhalation of high concentrations of vapor may result in irritation of eyes, nose and throat, headache, nausea, and dizziness.

**Skin contact**

Adverse skin effects should be prevented by normal care and personal hygiene.

**Eye contact**

Possible irritation should be prevented by wearing safety glasses.

**Ingestion**

Low order toxicity causing irritation of the stomach and intestines which results in nausea and vomiting

---

**12. ECOLOGICAL INFORMATION**

**Ecotoxicity**

Toxic to aquatic organisms, may cause long-term adverse effects environment. Avoid any pollution of ground, surface or underground water.

**Persistence and degradability**

Not available.

**Bio - accumulative potential**

Not available.

**Mobility in soil**

Not available.

**Other adverse effects**

Not available.

---

**13. DISPOSAL CONSIDERATION**

Dispose of product in accordance with local, state or provincial and federal regulations. Check with local municipal authority to ensure compliance.

## 14. TRANSPORT INFORMATION

---

### **US DOT Shipping Description (Land)**

Not regulated

### **IMO-IMDG Shipping Description (Sea)**

Not regulated

### **IATA Shipping Description (Air)**

Not regulated

## 15. REGULATORY INFORMATION

---

### **California Proposition 65**

Contains substance identified in the revised list of the California Safe Cosmetic program SB 484 (as stated in Proposition 65 revised list: BETA-MYRCENE.

### **GHS Hazard Statements**

Please refer to section 2.

### **GHS Precautionary Statements**

Please refer to section 2.

## 16. OTHER INFORMATION

---

Revision date : April 22,2022

### **Limitación de Responsabilidad**

Consulta toda la información técnica relevante específica del producto antes de su uso. La información contenida en este documento se obtiene de fuentes actuales y confiables. MyLottush, proporciona la información contenida en este documento, pero no garantiza su exhaustividad o precisión. Las personas que reciben esta información deben ejercer su juicio independiente para determinar si es adecuada para un propósito particular. El usuario del producto es el único responsable del cumplimiento de todas las leyes y reglamentos aplicables al uso de los productos, incluidos los derechos de propiedad intelectual de terceros. Como los usos ordinarios o de otro tipo de este producto están fuera del control de MyLottush, no se hace ninguna representación o garantía, expresa o implícita, en cuanto a los efectos de dichos usos, (incluyendo daños o lesiones), o los resultados obtenidos. La responsabilidad de MyLottush se limita al valor de los bienes y no incluye ninguna pérdida consecuenta. MyLottush no será responsable de ningún error o demora en el contenido, ni de ninguna acción tomada en base al mismo. MyLottush no será responsable de ningún daño que resulte del uso o la confianza en esta información.

## CERTIFICATE OF ANALYSIS

**Product** : **Ho Wood Essential Oil**

Lot No : 11228A10822

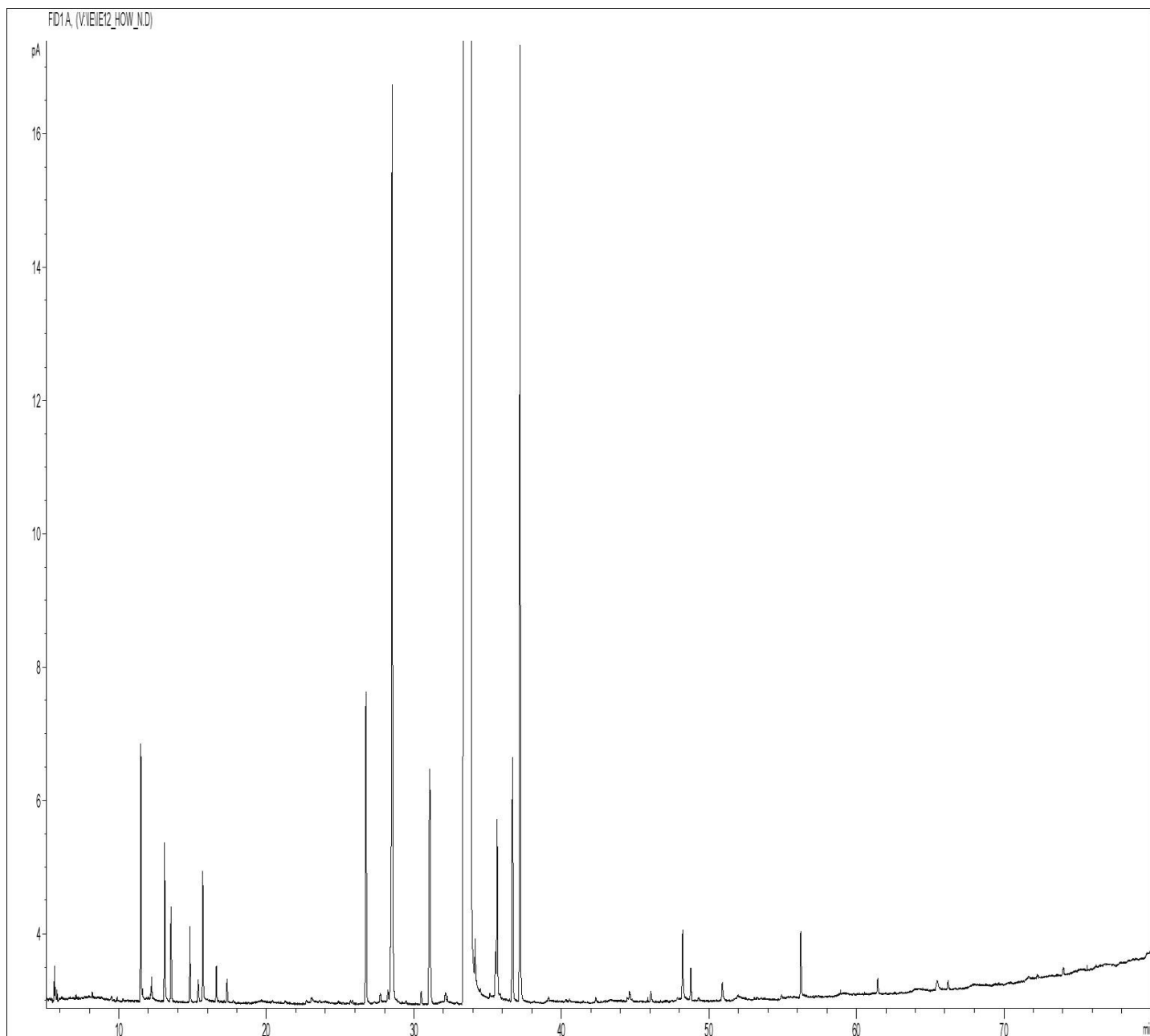
Best Before : August, 2024

<u>Properties</u>	<u>Specifications</u>	<u>Results</u>
Appearance	: Colorless to yellowish liquid.	Complies
Odor	: Fresh Floral like odor	Complies
Solubility	: Insoluble in water.	Complies
Specific Gravity	: 0.8560 to 0.8670 @ 20°C	0.8602
Refractive Index	: 1.4610 to 1.4650 @ 20°C	1.4629
Linalool	: $\geq 95.0$ %	99.08

## GCMS ANALYSIS

PRODUCT NAME: HO WOOD ESSENTIAL OIL - 11228

DATE: August 18, 2022



*Due to volume turnover, this report is not lot specific, It is representative of the quality of this oil produced by the manufacturer of this product, Specific lots may vary slightly as is the case in natural products,*

### GCMS ANALYSIS (cont'd.)

PRODUCT NAME: HO WOOD ESSENTIAL OIL - 11228

Peak	RT (min)	Compound name	%
1	11,49	beta-MYRCENE	0,06
2	13,11	LIMONENE	0,04
3	13,54	1,8-CINEOLE	0,02
4		beta-PHELLANDRENE	
5	14,82	cis-beta-OCIMENE	0,02
6	15,69	trans-beta-OCIMENE	0,03
7	26,75	LINALOOL cis-OXIDE	0,10
8	28,43	trans-THUYANOL	0,01
9	28,53	LINALOOL trans-OXIDE	0,32
10	31,08	CAMPHOR	0,10
11	33,91	<b>LINALOOL</b>	<b>98,85</b>
12	34,16	1-OCTANOL	0,02
13	35,52	FENCHOL	0,01
14	35,63	PLINOL ISOMER	0,05
15	36,68	TERPINENE-4-OL	0,07
16	37,19	HOTRIENOL	0,26
17	48,21	TERPENIC ALCOHOL	0,02
18	56,22	3,7-OCTADIENE-2,6-DIOL, 2,6-DIMETHYL-	0,02
		<b>TOTAL</b>	<b>100,00</b>

#### **Limitación de Responsabilidad**

Consulta toda la información técnica relevante específica del producto antes de su uso. La información contenida en este documento se obtiene de fuentes actuales y confiables. MyLottush, proporciona la información contenida en este documento, pero no garantiza su exhaustividad o precisión. Las personas que reciben esta información deben ejercer su juicio independiente para determinar si es adecuada para un propósito particular. El usuario del producto es el único responsable del cumplimiento de todas las leyes y reglamentos aplicables al uso de los productos, incluidos los derechos de propiedad intelectual de terceros. Como los usos ordinarios o de otro tipo de este producto están fuera del control de MyLottush, no se hace ninguna representación o garantía, expresa o implícita, en cuanto a los efectos de dichos usos, (incluyendo daños o lesiones), o los resultados obtenidos. La responsabilidad de MyLottush se limita al valor de los bienes y no incluye ninguna pérdida consecuente. MyLottush no será responsable de ningún error o demora en el contenido, ni de ninguna acción tomada en base al mismo. MyLottush no será responsable de ningún daño que resulte del uso o la confianza en esta información.