

# SAFETY DATA SHEET (SDS)

Version 2.0

Revision Date : April 22,2022

Print Date : March 19, 2023

## 1. PRODUCT AND COMPANY IDENTIFICATION

---

Product name	:	Litsea Cubeba Essential Oil - Verified By ECOCERT /Cosmos Approved
Botanical name	:	Litsea cubeba
INCI name	:	Litsea Cubeba Fruit Oil
CAS #	:	68855-99-2 / 90063-59-5
Country of Origin	:	China
EINECS #	:	290-018-7
	:	Domestic and Industrial

## 2. HAZARDS IDENTIFICATION

### Emergency Overview

### GHS Classification

Flammable Liquids - Category 3

Aspiration hazard - Category1

Acute Toxicity - dermal - Category 5

Skin corrosion/irritation - Category 2

Skin Sensitization - Category 1

Eye irritation - Category 2

Hazardous to aquatic environment - Acute - Category 2

Hazardous to aquatic environment - Chronic - Category 2

### GHS Label elements, including precautionary statements



Signal: Warning

### Hazard statement(s)

H227	Combustible liquid.
H304	May be fatal if swallowed and enters airways.
H313	May be harmful in contact with skin.
H315	Causes skin irritation.
H317	May cause an allergic skin reaction.
H319	Causes serious eye irritation.
H401	Toxic to aquatic life.
H411	Toxic to aquatic life with long-lasting effects.

**Precautionary statement(s)**

P210	Keep away from heat, hot surfaces, sparks, open flames and other ignition sources. No smoking.
P261	Avoid breathing dust/fumes/gas/mist/vapours/spray.
P264	Wash hands thoroughly after handling.
P272	Contaminated work clothing should not be allowed out of the workplace.
P273	Avoid release to the environment.
P280	Wear protective gloves/protective clothing/eye protection/face protection.
P302+P352	IF ON SKIN: Wash with plenty of water/
P305+P351+P338	IF IN EYES: Rinse cautiously with water for several minutes. Remove contact lenses if present and easy to do – continue rinsing.
P312	Call a POISON CENTER/ doctor/if you feel unwell.
P333+P313	If skin irritation or a rash occurs: Get medical advice/attention.
P337+P313	If eye irritation persists get medical advice/attention.
P362	Take off contaminated clothing.
P363	Wash contaminated clothing before reuse.
P370+P378	In case of fire: Use appropriate fire extinguisher to extinguish.
P391	Collect spillage.
P403+P235	Store in a well ventilated place. Keep cool.
P501	Dispose of contents/container according to local regulations.

**3. COMPOSITION / INFORMATION INGREDIENTS**

Product Name	CAS NO	EC NO	Concentration
Litsea Cubeba Oil	68855-99-2 / 90063-59-5	290-018-7	100 %

**4. FIRST AID MEASURES**

**Eye contact**

Check for and remove any contact lenses. Immediately flush eyes with plenty of cool water for at least 15 minutes. Get medical attention if irritation occurs.

**Skin contact**

Remove contaminated clothing. Wash area with soap and water. If irritation occurs, get medical attention.

**Inhalation**

If inhaled, removed to fresh air. Get medical attention if symptoms appear.

**Ingestion**

Seek medical attention or contact local poison control center.

**5. FIRE FIGHTING MEASURES**

### **Suitable extinguishing media**

Foam. Dry Powder. Carbon dioxide.

### **Unsuitable extinguishing media**

Water spray, water jet.

### **Special protective equipment and precautions for fire-fighters**

Wear proper protective equipment. Exercise caution when fighting any chemical fire. Use water spray or fog for cooling exposed containers.

### **Special hazards arising from the substance or its combustible products**

Hazardous decomposition products may be formed at extreme heat or if burned.

### **Resulting gases**

Carbon oxides.

## **6. ACCIDENTAL RELEASE MEASURES**

---

### **Personal precautions, protective equipment and emergency procedures.**

Equip clean crew with proper protection. Respiratory protection equipment may be necessary.

### **Environmental precautions**

Prevent entry to sewers and public waters. Notify authorities if product enters sewers or public waters.

### **Methods and materials for containment and cleaning up**

Clean up any spills as soon as possible, using an absorbent material to collect it. Use suitable disposal containers.

## **7. HANDLING AND STORAGE**

---

### **Precautions for safe handling**

No direct lighting. No smoking. Ensure prompt removal from eyes, skin and clothing. Wash hands and other exposed areas with mild soap and water before eating, drinking or smoking and when leaving work. Handle in accordance with good industrial hygiene and safety procedures.

### **Conditions for safe storage, including any incompatibilities**

Provide local exhaust or general room ventilation to minimize dust and/or vapour concentrations. Keep container closed when not in use.

## **8. EXPOSURE CONTROLS AND PERSONAL PROTECTION**

---

### **Eyes**

Use tightly sealed goggles.

### **Skin**

If skin contact or contamination of clothing is likely, protective clothing should be worn. Use protective gloves.

### **Respiratory**

In case of insufficient ventilation, wear suitable respiratory equipment.

### **Ingestion**

Not for ingestion.

## **9. PHYSICAL AND CHEMICAL PROPERTIES**

---

Appearance	:	Pale yellow to yellow liquid.
Odor	:	Characteristic lemony, citral odor.
Initial b.p and boiling range	:	232 °C
Flash point	:	54.44°C

Relative density	:	0.880 to 0.905 @ 25 °C
Solubility (ies)	:	Soluble in (1:3) mL 90% alcohol @ 25 °C
Refractive index	:	1.480 to 1.490 @ 20°C
Optical rotation	:	+3° to +12° @ 20°C

## 10. STABILITY AND REACTIVITY

---

### Reactivity

This material presents no significant reactivity hazard.

### Chemical stability

Chemically stable.

### Possibility of hazardous reactions

Hazardous polymerization will not occur.

### Conditions to avoid

Avoid sparks, flame and other heat sources.

### Incompatible materials

Strong oxidizing agents.

## 11. TOXICOLOGICAL INFORMATION

---

### Acute toxicity

LD50 - oral (rat): 7200mg/kg (Pharmazie (1959) 14, 435)

LD50 - dermal (rabbit): 4700mg/kg

### Inhalation

Inhalation of high concentrations of vapor may result in irritation of eyes, nose and throat, headache, nausea, and dizziness.

### Skin contact

Adverse skin effects should be prevented by normal care and personal hygiene.

### Eye contact

Possible irritation should be prevented by wearing safety glasses.

## 12. ECOLOGICAL INFORMATION

---

### Ecotoxicity

Toxic to aquatic organisms, may cause long-term adverse effects environment. Avoid any pollution of ground, surface or underground water.

### Persistence and degradability

Not available.

### Bio - accumulative potential

Not available.

### Mobility in soil

Not available.

### Other adverse effects

Not available.

## 13. DISPOSAL CONSIDERATION

---

Dispose of product in accordance with local, state or provincial and federal regulations. Check with local municipal authority to ensure compliance.

## 14. TRANSPORT INFORMATION

---

### UN Number

1993

### UN proper shipping name

Flammable liquid, n.o.s. (Litsea cubeba oil)

### Transport hazard class

3

### Packing group

III

### US DOT Shipping Description (Land)

1993

### Proper shipping name

Flammable liquid, n.o.s. (Litsea cubeba oil)

### Class

3

### Packaging group

III

### IMO-IMDG Shipping Description (Sea)

1993

### Proper shipping name

Flammable liquid, n.o.s. (Litsea cubeba oil)

### Class

3

### Packaging group

III

### IATA Shipping Description (Air)

1993

### Proper shipping name

Flammable liquid, n.o.s. (Litsea cubeba oil)

### Class

3

### Packaging group

III

### Emergency action in case of accident

Notify police and fire department immediately

## 15. REGULATORY INFORMATION

---

### California Proposition 65

• This product can expose you to beta-Myrcene, which is known to the State of California to cause cancer. For more information go to [www.P65Warnings.ca.gov](http://www.P65Warnings.ca.gov).

### GHS Hazard Statements

Please refer to section 2.

### GHS Precautionary Statements

Please refer to section 2.

## **16. OTHER INFORMATION**

---

Revision date : April 22,2022

## CERTIFICATE OF ANALYSIS

**Product** : Litsea Cubeba Essential Oil - Verified by ECOCERT / Cosmos Approved

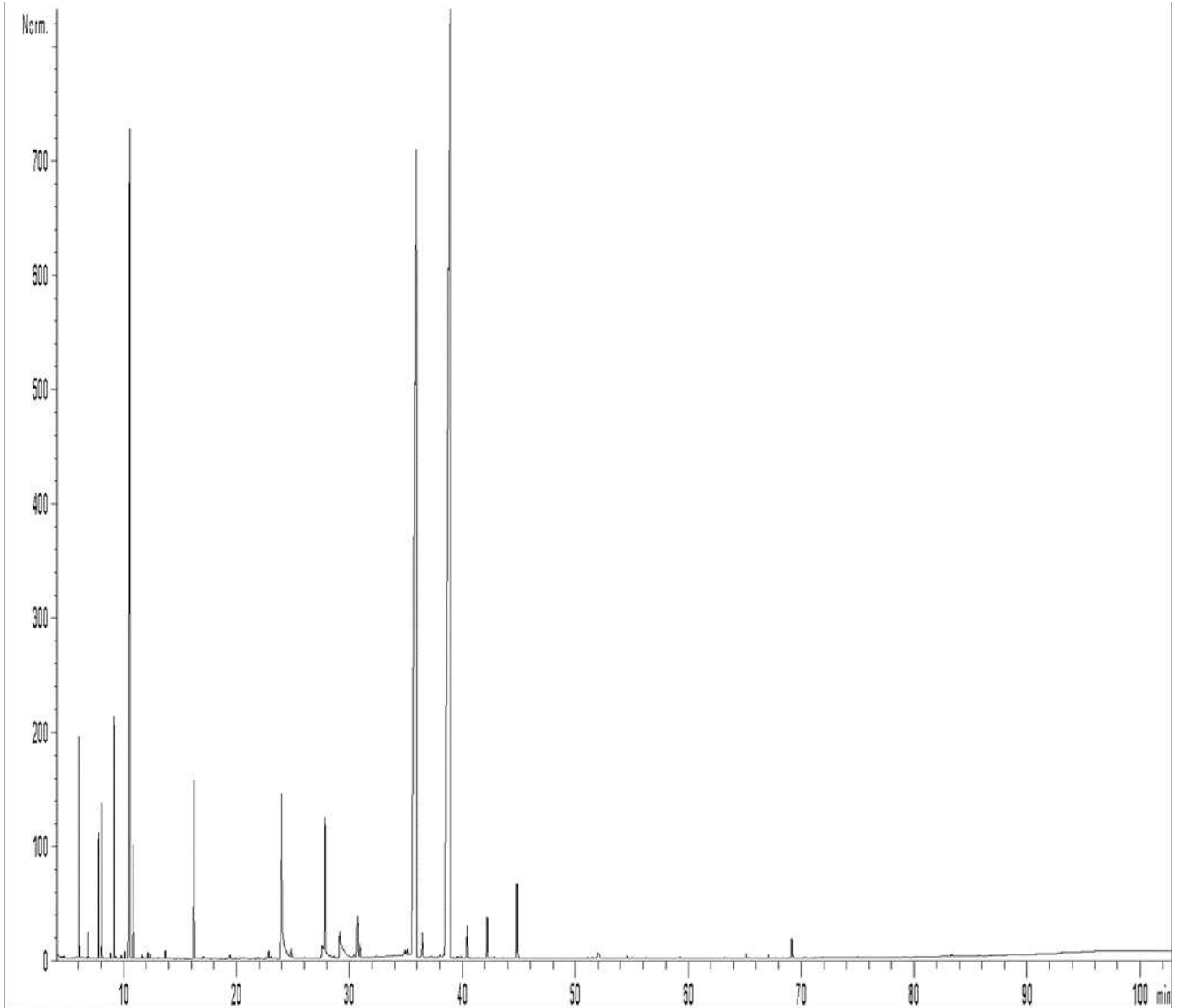
Lot No : 11085C104211

Best Before : April, 2024

<u>Properties</u>	<u>Specifications</u>	<u>Results</u>
Appearance	: Clear yellow liquid.	Complies
Odor	: Citrus like odor.	Complies
Solubility	: Soluble in (1:3) ml 90% alcohol @ 25°C	Complies
Specific Gravity	: 0.870 - 0.890 @ 20°C	Complies
Refractive Index	: 1.4700 - 1.4850 @ 20°C	Complies
Caryophyllene	: ≤ 2.0 %	Complies
Total Aldehyde	: ≥ 65.0 %	Complies

## GCMS ANALYSIS

PRODUCT NAME: LITSEA CUBEBA ESSENTIAL OIL - VERIFIED BY ECOCERT/  
COSMOS APPROVED  
DATE: May 07, 2021



*Due to volume turnover, this report is not lot specific, It is representative of the quality of this oil produced by the manufacturer of this product, Specific lots may vary slightly as is the case in natural products,*



GCMS ANALYSIS (cont'd.)

PRODUCT NAME: LITSEA CUBEBA ESSENTIAL OIL - VERIFIED BY ECOCERT/COSMOS APPROVED

Peak	RT (min)	Compound	%
1	4,59	ISOVALERALDEHYDE	0,01
2	4,73	ETHANOL	0,01
3	5,82	TRICYCLENE	0,01
4	6,00	<b>alpha-PINENE</b>	<b>0,96</b>
5	6,04	alpha-THUYENE	0,10
6	6,84	CAMPHENE	0,14
7	7,76	beta-PINENE	0,76
8	8,06	SABINENE	0,92
9	8,82	delta3-CARENE	0,04
10	9,16	beta-MYRCENE	1,60
11	9,32	alpha-PHELLANDRENE	0,03
12	9,77	alpha-TERPINENE	0,02
13	10,12	1,8-CINEOLE,2,3-DEHYDRO-	0,06
14	10,52	<b>LIMONENE</b>	<b>10,29</b>
15	10,83	1,8-CINEOLE	0,84
16		beta-PHELLANDRENE	
17	11,64	cis-beta-OCIMENE	0,03
18	12,14	gamma-TERPINENE	0,05
19	12,33	trans-beta-OCIMENE	0,04
20	12,99	m-CYMENE	0,01
21	13,12	p-CYMENE	0,01
22	13,69	TERPINOLENE	0,07
23	16,22	<b>5-HEPTEN-2-ONE, 6-METHYL-</b>	<b>1,67</b>
24	17,05	5-HEPTENAL,2,6-DIMETHYL-	0,02
25	19,42	ROSEFURAN	0,03
26	20,02	ALIPHATIC ESTER	0,01
27	20,35	FENCHONE	0,02
28	20,43	COMPOUND Mw=152	0,01
29	20,58	cis-p-MENTHANE-8-OL	0,01
30	20,88	trans-p-MENTHANE-8-OL	0,01

GCMS ANALYSIS (cont'd.)

PRODUCT NAME: LITSEA CUBEBA ESSENTIAL OIL - VERIFIED BY ECOCERT/COSMOS APPROVED

Peak	RT (min)	Compound	%
31	21,74	LINALOOL cis-OXIDE	0,01
32	21,92	LIMONENE cis-1,2-EPOXIDE	0,02
33	22,63	LIMONENE trans-1,2-EPOXIDE	0,02
34	22,88	5-HEPTEN-2-OL,6-METHYL-	0,08
35	23,08	trans-THUYANOL	0,03
36	23,34	LINALOOL trans-OXIDE	0,01
37	23,99	<b>CITRONELLAL</b>	<b>3,72</b>
38	24,85	alpha-COPAENE	0,11
39	25,43	CAMPHRE	0,01
40	25,74	BENZALDEHYDE	0,01
41	26,02	PHOTOCITRAL ISOMERE	0,06
42	26,77	SESQUITERPENE	0,01
43	27,31	EPIPHOTOCITRAL A	1,06
44	27,85	<b>LINALOOL</b>	<b>1,47</b>
45	28,59	ISOPULEGOL	0,02
46	28,60	trans-p-MENTH-2-EN-1-OL	0,01
47	28,99	EPIPHOTOCITRAL B	1,30
48	29,15	epsilon-CADINENE	0,13
49	30,40	beta-ELEMENE	0,14
50	30,72	beta-CARYOPHYLLENE	0,79
51	30,92	TERPINENE-4-OL	0,23
52	32,38	trans-p-2,8-MENTHADIEN-1-OL	0,02
53	33,96	MELONOL	0,02
54	34,83	ZONARENE	0,02
55	34,92	alpha-HUMULENE	0,07
56	35,15	delta-TERPINEOL	0,09
57	35,93	<b>NERAL</b>	<b>30,50</b>
58	36,39	BORNEOL	0,06
59	36,45	alpha-TERPINEOL	0,30
60	37,23	GERMACRENE D	0,02

GCMS ANALYSIS (cont'd.)

PRODUCT NAME: LITSEA CUBEBA ESSENTIAL OIL - VERIFIED BY ECOCERT/COSMOS APPROVED

Peak	RT (min)	Compound	%
61	38,05	PIPERITONE	0,04
62	38,41	alpha-MUUROLENE	0,05
63	38,92	<b>GERANIAL</b>	<b>38,90</b>
64	39,26	BICYCLOGERMACRENE	0,02
65	39,51	cis-ISOPIPERITENOL	0,02
66	39,61	trans-ISOPIPERITENOL	0,02
67	39,88	GERANYL ACETATE	0,04
68	40,16	METHYL SALICYLATE	0,01
69	40,42	<b>CITRONELLOL</b>	<b>0,39</b>
70	40,66	beta-SESQUIPHELLANDRENE	0,01
71	41,14	trans-p-MENTHA-1,2-DIEN-8-OL	0,01
72	41,42	alpha-AMORPHENE	0,01
73	42,21	<b>NEROL</b>	<b>0,51</b>
74	42,65	cis-ISOGERANIOL	0,02
75	42,84	trans-ISOGERANIOL	0,02
76	43,57	trans-ANETHOL	0,01
77	44,05	trans-CARVEOL	0,01
78	44,83	<b>GERANIOL</b>	<b>0,91</b>
79	45,68	cis-CARVEOL	0,01
80	51,10	HEXENYL ESTER	0,02
81	51,52	ISOCARYOPHYLLENE EPOXIDE	0,02
82	51,97	CARYOPHYLLENE EPOXIDE	0,08
83	52,07	HYDROXY-alpha-TERPENYL ACETATE	0,10
84	54,58	CYCLOHEXENIC ALCOHOL	0,04
85	54,88	epoxy-6,7-HUMULENE	0,01
86	55,08	CYCLOHEXENIC ALCOHOL	0,02
87	55,29	NEROLIDOL	0,02
88	56,21	CHRYSANTHENONE	0,01
89	59,22	SPATHULENOL	0,02
90	63,23	ALIPHATIC ESTER	0,02

## GCMS ANALYSIS (cont'd.)

PRODUCT NAME: LITSEA CUBEBA ESSENTIAL OIL - VERIFIED BY ECOCERT/COSMOS APPROVED

Peak	RT (min)	Compound	%
91	65,12	CITRONELLIC ACID	0,07
92	65,32	EUDESMA-7(11)-EN-4-OL	0,01
93	66,01	trans-LIMONENE-1,2-DIOL	0,01
94	67,06	NERIC ACID	0,05
95	67,73	ALIPHATIC ESTER	0,01
96	69,15	GERANIC ACID	0,27
97	73,01	SESQUITERPENIC EPOXIDE	0,01
98	74,94	SESQUITERPENOL	0,02
99	83,34	AROMATIC COMPOUND Mw=286	0,03
100	87,45	ACID COMPOUND Mw=168	0,01
101	88,25	ACID COMPOUND Mw=168	0,01
		<b>TOTAL</b>	<b>99,99</b>

### Limitación de Responsabilidad

Consulta toda la información técnica relevante específica del producto antes de su uso. La información contenida en este documento se obtiene de fuentes actuales y confiables. MyLottush, proporciona la información contenida en este documento, pero no garantiza su exhaustividad o precisión. Las personas que reciben esta información deben ejercer su juicio independiente para determinar si es adecuada para un propósito particular. El usuario del producto es el único responsable del cumplimiento de todas las leyes y reglamentos aplicables al uso de los productos, incluidos los derechos de propiedad intelectual de terceros. Como los usos ordinarios o de otro tipo de este producto están fuera del control de MyLottush, no se hace ninguna representación o garantía, expresa o implícita, en cuanto a los efectos de dichos usos, (incluyendo daños o lesiones), o los resultados obtenidos. La responsabilidad de MyLottush se limita al valor de los bienes y no incluye ninguna pérdida consecuente. MyLottush no será responsable de ningún error o demora en el contenido, ni de ninguna acción tomada en base al mismo. MyLottush no será responsable de ningún daño que resulte del uso o la confianza en esta información.