

# SAFETY DATA SHEET (SDS)

Version 2.0

Revision Date : April 22,2022

Print Date : March 18, 2023

## 1. PRODUCT AND COMPANY IDENTIFICATION

---

Product name	:	Lavender Essential Oil - Verified By ECOCERT/Cosmos Approved
Botanical name	:	Lavandula officinalis
INCI name	:	Lavandula Officinalis Flower Oil
CAS #	:	84776-65-8
Country of Origin	:	France
EINECS #	:	283-994-0
Product use	:	Domestic and Industrial

## 2. HAZARDS IDENTIFICATION

---

### Emergency Overview

### GHS Classification

Flammable liquids - Category 4

Acute toxicity, dermal - Category 5

Skin corrosion/irritation - Category 2

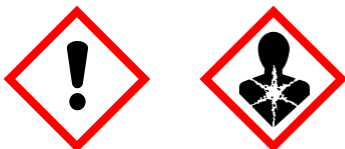
Skin Sensitization - Category 1

Serious eye damage/eye Irritation - Category 2A

Hazardous to the aquatic environment, acute hazard - Category 2

Hazardous to the aquatic environment, long-term hazard - Category 3

### GHS Label elements, including precautionary statements



Signal: Warning

### Hazard statement(s)

H227	Combustible Liquid.
H313	May be harmful in contact with skin.
H315	Causes skin irritation.
H317	May cause an allergic skin reaction.
H319	Causes serious eye irritation.
H401	Toxic to aquatic life.
H412	Harmful to aquatic life with long-lasting effects.

**Precautionary statement(s)**

P210	Keep away from heat, hot surfaces, sparks, open flames and other ignition sources. No smoking.
P260	Do not breathe dust/fumes/gas/mist/vapours/spray.
P264	Wash face, hands and any exposed skin thoroughly after handling.
P270	Do not eat, drink or smoke when using this product.
P272	Contaminated work clothing should not be allowed out of the workplace.
P273	Avoid release to the environment.
P302+P350	IF ON SKIN: Gently wash with plenty of soap and water.
P305+P351+P338	IF IN EYES: Rinse cautiously with water for several minutes. Remove contact lenses if present and easy to do – continue rinsing.
P309+P311	IF exposed or if you feel unwell: call a POISON CENTER or doctor/physician.
P333+P313	If skin irritation or a rash occurs: Get medical advice/attention.
P337+P313	If eye irritation persists get medical advice/attention.
P362+P364	Take off contaminated clothing and wash it before reuse.
P370+P378	In case of fire: Use CO2, dry chemical, or foam to extinguish.
P391	Collect spillage.
P405	Store locked up.
P501	Dispose of contents/container to an approved waste disposal plant.

**3. COMPOSITION / INFORMATION INGREDIENTS**

Product Name	CAS NO	EC NO	Concentration
Lavandula Officinalis Flower Oil	84776-65-8	283-994-0	100 %

**4. FIRST AID MEASURES**

**Eye contact**

Immediately flush eyes with plenty of cool water for at least 15 minutes. Get medical attention if irritation occurs.

**Skin contact**

Remove contaminated clothing. Wash area with soap and water. If irritation occurs, get medical attention.

**Inhalation**

If inhaled, removed to fresh air. Get medical attention if symptoms appear.

**Ingestion**

Seek medical attention or contact local poison control center.

**5. FIRE FIGHTING MEASURES**

**Suitable extinguishing media**

Foam. Dry Powder. Carbon dioxide.

### **Unsuitable extinguishing media**

Water spray, water jet.

### **Special protective equipment and precautions for fire-fighters**

Wear proper protective equipment. Exercise caution when fighting any chemical fire. Use water spray or fog for cooling exposed containers.

### **Special hazards arising from the substance or its combustible products**

Hazardous decomposition products may be formed at extreme heat or if burned.

### **Resulting gases**

Carbon oxides.

## **6. ACCIDENTAL RELEASE MEASURES**

---

### **Personal precautions, protective equipment and emergency procedures.**

Equip clean crew with proper protection. Respiratory protection equipment may be necessary.

### **Environmental precautions**

Prevent entry to sewers and public waters. Notify authorities if product enters sewers or public waters.

### **Methods and materials for containment and cleaning up**

Clean up any spills as soon as possible, using an absorbent material to collect it. Use suitable disposal containers.

## **7. HANDLING AND STORAGE**

---

### **Precautions for safe handling**

No direct lighting. No smoking. Ensure prompt removal from eyes, skin and clothing. Wash hands and other exposed areas with mild soap and water before eating, drinking or smoking and when leaving work. Handle in accordance with good industrial hygiene and safety procedures.

### **Conditions for safe storage, including any incompatibilities**

Provide local exhaust or general room ventilation to minimize dust and/or vapour concentrations. Keep container closed when not in use.

## **8. EXPOSURE CONTROLS AND PERSONAL PROTECTION**

---

### **Eyes**

Use tightly sealed goggles.

### **Skin**

If skin contact or contamination of clothing is likely, protective clothing should be worn. Use protective gloves.

### **Respiratory**

In case of insufficient ventilation, wear suitable respiratory equipment.

### **Control parameters**

Bornan-2-one

OSHA PEL (TWA): 2 MGM3

ACGIH TLV (TWA): 2 PPM

ACGIH TLV (STEL): 3 PPM

California PEL (TWA): STEL: 19 MGM3, 3 PPM 2 MGM3

dl-Camphor

OSHA PEL (TWA): 2 MGM3

ACGIH TLV (TWA): 2 PPM

ACGIH TLV (STEL): 3 PPM

California PEL (TWA): 2 MGM3

Pinene, alpha

ACGIH TLV (TWA): 20 PPM  
Pinene, beta  
ACGIH TLV (TWA): 20 PPM

## 9. PHYSICAL AND CHEMICAL PROPERTIES

---

Appearance	:	Pale yellow to yellow liquid.
Odor	:	Characteristic odor.
Initial b.p and boiling range	:	> 35 °C
Flash point	:	78°C
Relative density	:	0.8862 to 0.8962 @ 20°C
Solubility (ies)	:	Soluble in alcohol and oils. Insoluble in water.
Refractive index	:	1.459 to 1.470 @ 20°C
Optical rotation	:	-30 to -10° @ 20°C

## 10. STABILITY AND REACTIVITY

---

### Reactivity

This material presents no significant reactivity hazard.

### Chemical stability

Chemically stable.

### Possibility of hazardous reactions

Hazardous polymerization will not occur.

### Conditions to avoid

Avoid sparks, flame and other heat sources.

### Incompatible materials

Strong oxidizing agents.

### Hazardous decomposition products

Carbon Oxides.

## 11. TOXICOLOGICAL INFORMATION

---

### Acute toxicity

Oral LD50: >5000mg/kg

Mist: 42.20 mg/L

### Carcinogenicity

None of the components of this material are listed as a carcinogen.

### Chronic toxicity

May cause allergic reactions on skin.

### Inhalation

Inhalation of high concentrations of vapor may result in irritation of eyes, nose and throat, headache, nausea, and dizziness.

### Skin contact

Adverse skin effects should be prevented by normal care and personal hygiene.

### Eye contact

Possible irritation should be prevented by wearing safety glasses.

## 12. ECOLOGICAL INFORMATION

---

**Ecotoxicity**

Avoid any pollution of ground, surface or underground water.

**Persistence and degradability**

Not available.

**Bio - accumulative potential**

Not available.

**Mobility in soil**

Not available.

**Other adverse effects**

Not available.

**13. DISPOSAL CONSIDERATION**

---

Dispose of product in accordance with local, state or provincial and federal regulations. Check with local municipal authority to ensure compliance.

**14. TRANSPORT INFORMATION**

---

**US DOT Shipping Description (Land)**

Not regulated

**IMO-IMDG Shipping Description (Sea)**

Not regulated

**IATA Shipping Description (Air)**

Not regulated

**15. REGULATORY INFORMATION**

---

**California Proposition 65**

• This product can expose you to beta-Myrcene, which is known to the State of California to cause cancer. For more information go to [www.P65Warnings.ca.gov](http://www.P65Warnings.ca.gov).

**GHS Hazard Statements**

Please refer to section 2.

**GHS Precautionary Statements**

Please refer to section 2.

**16. OTHER INFORMATION**

---

Revision date : April 22,2022

**CERTIFICATE OF ANALYSIS****Product** Lavender Essential Oil - Verified by ECOCERT / Cosmos Approved

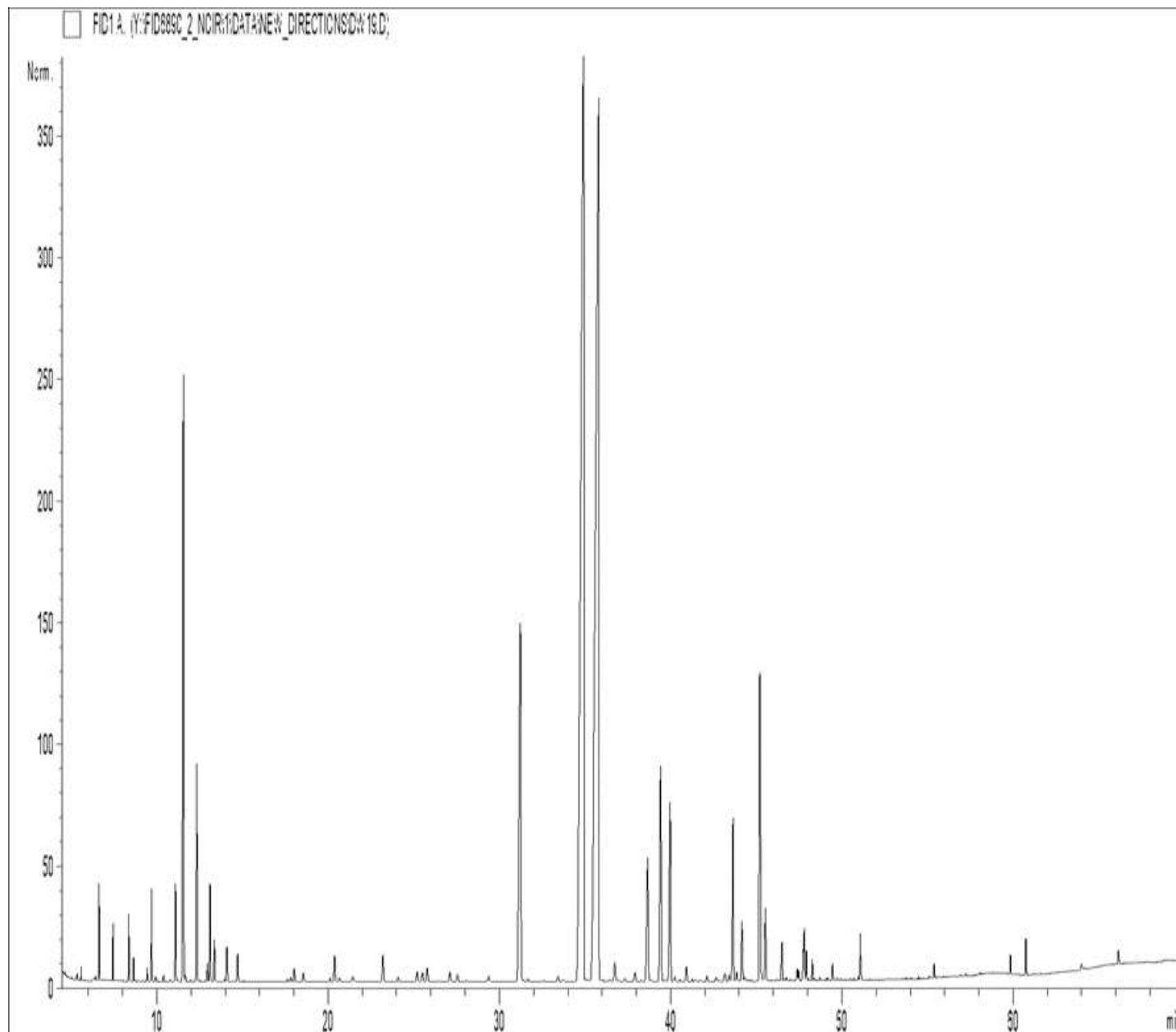
Lot No 1077011033

Best Before :b March, 2025

<b><u>Properties</u></b>	<b><u>Specifications</u></b>	<b><u>Results</u></b>
Appearance	: Pale yellow to yellow liquid.	Complies
Odor	: Characteristic odor.	Complies
Solubility	: Insoluble in water.	Complies
Specific Gravity	: 0.8600 to 0.9000 @ 20°C	0.8864
Optical Rotation	: -10° to -3°	Complies
Refractive Index	: 1.459 to 1.470 @ 20°C	1.4609
Linalool	: 21 - 40 %	Complies
Linalyl Acetate	: 28 - 45 %	Complies
Camphor	: 6 - 9 %	Complies

## GCMS ANALYSIS

PRODUCT NAME: LAVENDER ESSENTIAL OIL -VERIFIED BY ECOCERT/COSMOS  
APPROVED- 11077  
DATE: 26 October,2021



*Due to volume turnover, this report is not lot specific, It is representative of the quality of this oil produced by the manufacturer of this product, Specific lots may vary slightly as is the case in natural products,*

GCMS ANALYSIS (cont'd,)

PRODUCT NAME: LAVENDER ESSENTIAL OIL -VERIFIED BY ECOCERT/COSMOS  
APPROVED- 11077

Peak	RT (min)	Compound name	%
1	4,66	ACETONE	0,02
2	5,04	FURAN, 2-METHYL	0,01
3	5,33	BUTANAL, 2-METHYL	0,02
4	5,35	ISOVALERALDEHYDE	0,03
5	5,59	1-METHOXY HEXANE	0,06
6	6,42	TRICYCLENE	0,03
7	6,62	alpha-PINENE	0,46
8	6,65	alpha-THUYENE	0,08
9	7,40	BUTYL ACETATE	0,02
10	7,45	CAMPHENE	0,28
11	8,37	beta-PINENE	0,40
12	8,65	SABINENE	0,14
13	9,44	delta3-CARENE	0,09
14	9,70	<b>beta-MYRCENE</b>	<b>0,60</b>
15	9,93	alpha-PHELLANDRENE	0,04
16	10,40	alpha-TERPINENE	0,05
17	10,79	1,8-CINEOLE, 2,3-DEHYDRO-	0,01
18	11,09	<b>LIMONENE</b>	<b>0,74</b>
19	11,56	<b>1,8-CINEOLE</b>	<b>5,26</b>
20		<b>beta-PHELLANDRENE</b>	
21	11,67	BUTYL BUTYRATE	0,05
22	12,33	<b>cis-beta-OCIMENE</b>	<b>1,69</b>
23	12,78	ARBUSCULON ISOMER	0,02
24	12,95	gamma-TERPINENE	0,16
25	13,11	<b>trans-beta-OCIMENE</b>	<b>0,80</b>
26	13,36	<b>3-OCTANONE</b>	<b>0,35</b>
27	13,95	m-CYMENE	0,16
28	14,05	HEXYL ACETATE	0,20
29	14,15	p-CYMENE	0,13
30	14,42	ISOTERPINOLENE	0,01



GCMS ANALYSIS (cont'd.)

PRODUCT NAME: LAVENDER ESSENTIAL OIL - VERIFIED BY ECOCERT/COSMOS  
APPROVED- 11077

Peak	RT (min)	Compound name	%
31	14,72	TERPINOLENE	0,25
32	17,64	3-OCTANOL ACETATE	0,02
33	17,84	HEXYL PROPIONATE	0,05
34	18,04	HEXYL METHYLPROPIONATE	0,14
35	18,55	1-HEXANOL	0,11
36	20,12	ALLO-OCIMENE	0,04
37	20,39	1-OCTEN-3-YL ACETATE	0,30
38	20,67	3-HEXEN-1-OL	0,05
39	21,43	3-OCTANOL	0,06
40	21,48	GALBANOLENE	0,03
41	22,99	BUTYL CAPROATE	0,01
42	23,21	<b>HEXYL BUTYRATE</b>	<b>0,36</b>
43	23,68	HEXENYLIC ESTER	0,01
44	24,10	HEXYL 2-METHYLBUTYRATE	0,06
45	24,80	alpha-p-DIMETHYSTYRENE	0,01
46	25,21	LINALOOL cis-OXIDE	0,14
47	25,52	1-OCTEN-3-OL	0,12
48	25,79	HEXYL 3-METHYLBUTYRATE	0,19
49	26,47	CAMPHENILONE	0,02
50	27,12	trans-THUYANOL	0,13
51	27,55	LINALOOL trans-OXIDE	0,11
52	28,09	OCTYL ACETATE	0,02
53	29,38	DAUCENE	0,09
54	31,23	<b>CAMPHOR</b>	<b>6,50</b>
55	31,66	beta-BOURBONENE	0,05
56	32,59	alpha-GURJUNENE	0,02
57	33,43	BERGAMOTENE ISOMER	0,09
58	33,73	beta1-CUBEBENE	0,03
59	34,92	<b>LINALOOL</b>	<b>30,10</b>
60	35,00	cis-THUYANOL	0,06

GCMS ANALYSIS (cont'd,)

PRODUCT NAME: LAVENDER ESSENTIAL OIL -VERIFIED BY ECOCERT/COSMOS  
APPROVED- 11077

Peak	RT (min)	Compound name	%
61	35,80	<b>LINALYL ACETATE</b>	<b>29,49</b>
62	35,84	BERGAMOTENE ISOMER	0,05
63	36,04	BORNYL FORMATE	0,03
64	36,48	alpha-cis-BERGAMOTENE	0,04
65	36,75	alpha-SANTALENE	0,31
66	36,96	epsilon-CADINENE	0,03
67	37,34	BORNYL ACETATE	0,06
68	37,92	alpha-trans-BERGAMOTENE	0,18
69	38,28	beta-ELEMENE	0,03
70	38,66	beta-CARYOPHYLLENE	2,00
71	39,42	<b>TERPINENE-4-OL</b>	<b>3,01</b>
72	39,68	TERPENIC ESTER	0,02
73	39,98	<b>LAVANDULYL ACETATE</b>	<b>2,33</b>
74	40,24	HEXYL CAPROATE	0,07
75	40,55	AROMADENDRENE	0,02
76	40,92	HEXYL TIGLATE	0,18
77	41,28	beta-SANTALENE	0,03
78	41,72	GERMACRENE A	0,03
79	42,12	FARNESENE ISOMER	0,07
80	42,66	FARNESENE ISOMER	0,05
81	43,14	ZONARENE	0,04
82	43,18	alpha-HUMULENE	0,10
83	43,41	delta-TERPINEOL	0,08
84	43,65	E-beta-FARNESENE	1,76
85	43,86	LAVANDULYL ISOBUTYRATE	0,12
86	44,16	LAVANDULOL	0,69
87	44,33	Z-beta-FARNESENE	0,06
88	45,20	<b>BORNEOL</b>	<b>2,65</b>
89	45,54	<b>alpha-TERPINEOL</b>	<b>1,07</b>
90	45,54	GERMACRENE D	0,79

GCMS ANALYSIS (cont'd.)

PRODUCT NAME: LAVENDER ESSENTIAL OIL -VERIFIED BY ECOCERT/COSMOS  
APPROVED- 11077

Peak	RT (min)	Compound name	%
91	46,19	PHELLANDRAL	0,02
92	46,30	PIPERITONE	0,01
93	46,50	NERYL ACETATE	0,28
94	46,55	beta-BISABOLENE	0,20
95	46,65	CARVONE	0,03
96	46,77	BICYCLOGERMACRENE	0,04
97	46,99	beta-CURCUMENE	0,02
98	47,40	LAVANDULYL BUTYRATE	0,11
99	47,48	alpha-FARNESENE	0,08
100	47,75	gamma-CADINENE	0,26
101	47,81	GERANYL ACETATE	0,43
102	47,93	LAVANDULYL METHYLBUTYRATE	0,25
103	48,02	LINALOOL PYRANIC trans-OXYDE	0,02
104	48,28	beta-SESQUIPELLANDRENE	0,18
105	48,37	alpha-CURCUMENE	0,02
106	48,43	CUMINAL	0,02
107	48,72	alpha-BISABOLENE	0,03
108	49,10	MYRTENOL	0,02
109	49,19	CAMPHOLENOL	0,03
110	49,45	NEROL	0,15
111	49,75	Cis-Epoxy-LINALYL ACETATE	0,03
112	49,95	Trans-Epoxy-LINALYL ACETATE	0,02
113	50,28	E,E-DIMETHYL-3,5,7-OCTATRIENE-2-OL	0,01
114	50,51	CALAMENENE	0,02
115	50,69	trans-CARVEOL	0,02
116	50,95	m-CYMENE-8-OL	0,03
117	51,00	p-CYMENE-8-OL	0,05
118	51,08	GERANIOL	0,37
119	53,79	HUMULENE EPOXIDE	0,01
120	54,48	3,7-OCTADIENE-2,6-DIOL, 2,6-DIMETHYL	0,02

## GCMS ANALYSIS

PRODUCT NAME: LAVENDER ESSENTIAL OIL - VERIFIED BY ECOCERT/COSMOS  
APPROVED- 11077

Peak	RT (min)	Compound name	%
121	55,12	ISOCARYOPHYLLENE EPOXIDE	0,02
122	55,39	CARYOPHYLLENE EPOXIDE	0,12
123	55,62	alpha-PHOTOSANTALOL A	0,02
124	57,25	CUBENOL	0,02
125	58,07	CUMINOL	0,02
126	59,85	T-CADINOL	0,14
127	60,75	alpha-BISABOLOL	0,26
128	66,15	COUMARIN	0,14
		<b>TOTAL</b>	<b>99,99</b>

### **Limitación de Responsabilidad**

Consulta toda la información técnica relevante específica del producto antes de su uso. La información contenida en este documento se obtiene de fuentes actuales y confiables. MyLottush, proporciona la información contenida en este documento, pero no garantiza su exhaustividad o precisión. Las personas que reciben esta información deben ejercer su juicio independiente para determinar si es adecuada para un propósito particular. El usuario del producto es el único responsable del cumplimiento de todas las leyes y reglamentos aplicables al uso de los productos, incluidos los derechos de propiedad intelectual de terceros. Como los usos ordinarios o de otro tipo de este producto están fuera del control de MyLottush, no se hace ninguna representación o garantía, expresa o implícita, en cuanto a los efectos de dichos usos, (incluyendo daños o lesiones), o los resultados obtenidos. La responsabilidad de MyLottush se limita al valor de los bienes y no incluye ninguna pérdida consecuente. MyLottush no será responsable de ningún error o demora en el contenido, ni de ninguna acción tomada en base al mismo. MyLottush no será responsable de ningún daño que resulte del uso o la confianza en esta información.