

SAFETY DATA SHEET (SDS)

Version 2.0

Revision Date : April 21,2022

Print Date : March 13, 2023

1. PRODUCT AND COMPANY IDENTIFICATION

Product name	:	Eucalyptus Globulus Essential Oil -Verified by ECOCERT /Cosmos Approved.
Botanical name	:	Eucalyptus globulus
INCI name	:	Eucalyptus Globulus Leaf/Twig Oil
CAS #	:	84625-32-1 / 8000-48-4
Country of Origin	:	China
EINECS #	:	283-406-2
Product use	:	Domestic and Industrial

2. HAZARDS IDENTIFICATION

Emergency Overview

GHS Classification

Flammable Liquid - Category 3

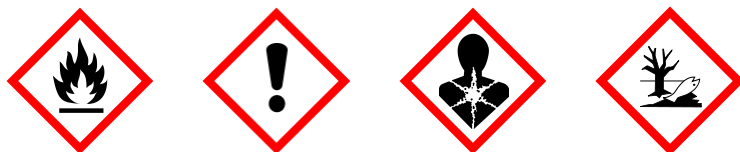
Skin Corrosion/irritation - Category 2

Skin sensitization - Category 1

Aspiration hazard - Category 1

Hazardous to the aquatic environment - Chronic - Category 2

GHS Label elements, including precautionary statements



Signal: Danger

Hazard statement(s)

H226	Flammable liquid and vapor.
H304	May be fatal if swallowed and enters airways.
H315	Causes skin irritation..
H317	May cause an allergic skin reaction.
H411	Toxic to aquatic life with long-lasting effects.

Precautionary statement(s)

P210	Keep away from heat, hot surfaces, sparks, open flames and other ignition sources. No smoking.
P264	Wash hands thoroughly after handling.
P270	Do not eat, drink or smoke when using this product.
P272	Contaminated work clothing should not be allowed out of the workplace.
P273	Avoid release to the environment.
P280	Wear protective gloves/protective clothing/eye protection/face protection.
P301+P310	IF SWALLOWED: Immediately call a POISON center or doctor/physician.
P303+P361+P353	IF ON SKIN (or hair): Take off immediately all contaminated clothing. Rinse skin with water/ shower.
P305+P351+P338	IF IN EYES: Rinse cautiously with water for several minutes. Remove contact lenses if present and easy to do - continue rinsing.
P332+P313	If skin irritation occurs: Get medical advice/attention.
P333+P313	If skin irritation or a rash occurs: Get medical advice/attention.
P337+P313	If eye irritation persists get medical advice/attention.
P362	Take off contaminated clothing.
P370	In case of fire: Use extinguishing media listed in Section 5 of the SDS to extinguish.
P403+P235	Store in a well ventilated place. Keep cool.
P405	Store locked up.
P501	Dispose of contents and container in accordance with local, regional, national and/or international regulation for hazardous wastes.

3. COMPOSITION / INFORMATION INGREDIENTS

Product Name	CAS NO	EC NO	Concentration
Eucalyptus Globulus Leaf/Twig Oil	84625-32-1	283-406-2	100 %

4. FIRST AID MEASURES

Eye contact

Immediately flush eyes with plenty of cool water for at least 15 minutes. Get medical attention if irritation occurs.

Skin contact

Remove contaminated clothing. Wash area with soap and water. If irritation occurs, get medical attention.

Inhalation

If inhaled, removed to fresh air. Get medical attention if symptoms appear.

Ingestion

Seek medical attention or contact local poison control center.

5. FIRE FIGHTING MEASURES

Suitable extinguishing media

Flammable liquid insoluble in water.

Small fire: Use DRY chemical powder, foam.

Large fire: Use water spray or fog. Cool contaminant vessels with water jet in order to prevent pressure build-up auto-ignition or explosion.

Unsuitable extinguishing media

Water spray, water jet.

Special protective equipment and precautions for fire-fighters

Wear proper protective equipment. Exercise caution when fighting any chemical fire. Use water spray or fog for cooling exposed containers.

Special hazards arising from the substance or its combustible products

Hazardous decomposition products may be formed at extreme heat or if burned.

Resulting gases

Carbon oxides.

6. ACCIDENTAL RELEASE MEASURES

Personal precautions, protective equipment and emergency procedures.

Equip clean crew with proper protection. Respiratory protection equipment may be necessary.

Environmental precautions

Prevent entry to sewers and public waters. Notify authorities if product enters sewers or public waters.

Methods and materials for containment and cleaning up

Clean up any spills as soon as possible, using an absorbent material to collect it. Use suitable disposal containers.

7. HANDLING AND STORAGE

Precautions for safe handling

No direct lighting. No smoking. Ensure prompt removal from eyes, skin and clothing. Wash hands and other exposed areas with mild soap and water before eating, drinking or smoking and when leaving work. Handle in accordance with good industrial hygiene and safety procedures.

Conditions for safe storage, including any incompatibilities

Provide local exhaust or general room ventilation to minimize dust and/or vapour concentrations. Keep container closed when not in use.

8. EXPOSURE CONTROLS AND PERSONAL PROTECTION

Exposure controls

Provide exhaust ventilation or other engineering controls to keep the airborne concentrations of vapors below their respective threshold limit values. Ensure that eyewash stations and showers are proximal to the work-station location.

Eyes

Use tightly sealed goggles.

Skin

If skin contact or contamination of clothing is likely, protective clothing should be worn. Use protective gloves.

Respiratory

In case of insufficient ventilation, wear suitable respiratory equipment.

Exposure limit values

DNEL - General Population

Inhalation: Long Term Exposure: 2.04 mg/m³

Dermal: Long Term Exposure: 0.5 mg/kg

Oral: Long Term Exposure: 0.5 mg/kg

9. PHYSICAL AND CHEMICAL PROPERTIES

Appearance	:	Colorless to pale yellow liquid.
Odor	:	odor reminiscent of 1,8-cineole.
Flash point	:	45.5°C
Relative density	:	0.905 to 0.927 @ 20 °C

Solubility (ies)	:	Soluble in 5 volumes of 70% ethyl alcohol.
Refractive index	:	1.4580 to 1.4650 @ 20°C
Optical rotation	:	0.0° to +10.0° @ 20°C

10. STABILITY AND REACTIVITY

Reactivity

This material presents no significant reactivity hazard.

Chemical stability

Chemically stable.

Possibility of hazardous reactions

Hazardous polymerization will not occur.

Conditions to avoid

Avoid sparks, flame and other heat sources.

Incompatible materials

Strong oxidizing agents.

Hazardous decomposition products

Carbon Oxides.

11. TOXICOLOGICAL INFORMATION

Acute toxicity

Oral toxicity: LD50 : 2480mg/Kg [Rat]

Acute Inhalation toxicity: LD50: 2480mg/Kg [Rabbit]

IARC

No component of this product present at levels greater than or equal to 0.1% is identified as probable, possible or confirmed human carcinogen by IARC.

Chronic toxicity

May cause allergic reactions on skin.

Inhalation

Inhalation of high concentrations of vapor may result in irritation of eyes, nose and throat, headache, nausea, and dizziness.

Skin contact

Adverse skin effects should be prevented by normal care and personal hygiene.

Eye contact

Possible irritation should be prevented by wearing safety glasses.

12. ECOLOGICAL INFORMATION

Ecotoxicity

Toxic to aquatic organisms, may cause long-term adverse effects environment. Avoid any pollution of ground, surface or underground water.

Persistence and degradability

Not available.

Bio - accumulative potential

Log Pow = 2.84

Mobility in soil

Not available.

Other adverse effects

Not available.

13. DISPOSAL CONSIDERATION

Dispose of product in accordance with local, state or provincial and federal regulations. Check with local municipal authority to ensure compliance.

14. TRANSPORT INFORMATION

UN Number

1993

UN proper shipping name

Flammable liquid, n.o.s. (Alpha-pinene)

Transport hazard class

3

Packing group

III

US DOT Shipping Description (Land)

1993

Proper shipping name

Flammable liquid, n.o.s. (Alpha-pinene)

Class

3

Packaging group

III

IMO-IMDG Shipping Description (Sea)

1993

Proper shipping name

Flammable liquid, n.o.s. (Alpha-pinene)

Class

3

Packaging group

III

IATA Shipping Description (Air)

1993

Proper shipping name

Flammable liquid, n.o.s. (Alpha-pinene)

Class

3

Packaging group

III

15. REGULATORY INFORMATION

California Proposition 65

- This product can expose you to beta-Myrcene, which is known to the State of California to cause cancer. For more information go to www.P65Warnings.ca.gov.

GHS Hazard Statements

Please refer to section 2.

GHS Precautionary Statements

Please refer to section 2.

16. OTHER INFORMATION

Revision date : April 21,2022

Limitación de Responsabilidad

Consulta toda la información técnica relevante específica del producto antes de su uso. La información contenida en este documento se obtiene de fuentes actuales y confiables. Lottush, proporciona la información contenida en este documento, pero no garantiza su exhaustividad o precisión. Las personas que reciben esta información deben ejercer su juicio independiente para determinar si es adecuada para un propósito particular. El usuario del producto es el único responsable del cumplimiento de todas las leyes y reglamentos aplicables al uso de los productos, incluidos los derechos de propiedad intelectual de terceros. Como los usos ordinarios o de otro tipo de este producto están fuera del control de Lottush, no se hace ninguna representación o garantía, expresa o implícita, en cuanto a los efectos de dichos usos, (incluyendo daños o lesiones), o los resultados obtenidos. La responsabilidad de Lottush se limita al valor de los bienes y no incluye ninguna pérdida consecuente. Lottush no será responsable de ningún error o demora en el contenido, ni de ninguna acción tomada en base al mismo. Lottush no será responsable de ningún daño que resulte del uso o la confianza en esta información.

CERTIFICATE OF ANALYSIS

Product	Eucalyptus Globulus Essential Oil - Verified by ECOCERT / Cosmos Approved
Lot No	:11053A10922
Best Before	:September, 2024

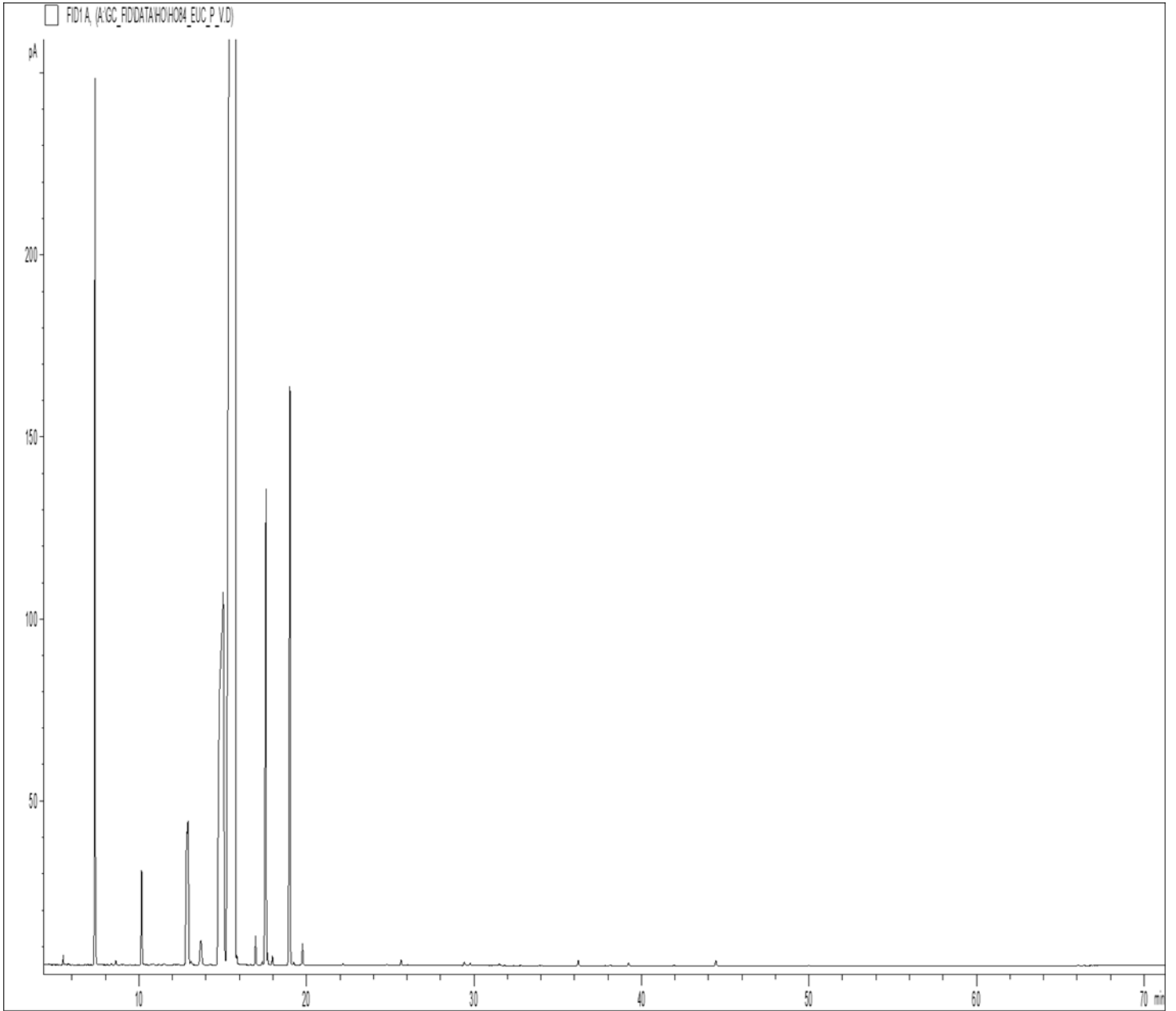
<u>Properties</u>	<u>Specifications</u>	<u>Results</u>
Appearance	: Colorless to pale yellow liquid	Complies
Odor	: Odor reminiscent of 1,8-cineole.	Complies
Solubility in 70%ethanol	: 1ml : 5ml gives a clear liquid.	Complies
Specific Gravity	: 0.905to 0.925 @ 20°C	0.9111
Optical Rotation	: 0.0° to +10.0° @ 20°C	2.300
Refractive Index	: 1.458 to 1.465 @ 20°C	1.4606
1,8-cineole	: ≥ 80.0 %	80.38

Limitación de Responsabilidad

Consulta toda la información técnica relevante específica del producto antes de su uso. La información contenida en este documento se obtiene de fuentes actuales y confiables. Lottush, proporciona la información contenida en este documento, pero no garantiza su exhaustividad o precisión. Las personas que reciben esta información deben ejercer su juicio independiente para determinar si es adecuada para un propósito particular. El usuario del producto es el único responsable del cumplimiento de todas las leyes y reglamentos aplicables al uso de los productos, incluidos los derechos de propiedad intelectual de terceros. Como los usos ordinarios o de otro tipo de este producto están fuera del control de Lottush, no se hace ninguna representación o garantía, expresa o implícita, en cuanto a los efectos de dichos usos, (incluyendo daños o lesiones), o los resultados obtenidos. La responsabilidad de Lottush se limita al valor de los bienes y no incluye ninguna pérdida consecuente. Lottush no será responsable de ningún error o demora en el contenido, ni de ninguna acción tomada en base al mismo. Lottush no será responsable de ningún daño que resulte del uso o la confianza en esta información.

GCMS ANALYSIS

PRODUCT NAME: EUCALYPTUS GLOBULUS ESSENTIAL OIL
COSMOS APPROVED*
DATE: May 30, 2022



Due to volume turnover, this report is not lot specific, It is representative of the quality of this oil produced by the manufacturer of this product, Specific lots may vary slightly as is the case in natural products,

GCMS ANALYSIS (cont'd.)

PRODUCT NAME: EUCALYPTUS GLOBULUS ESSENTIAL OIL
COSMOS APPROVED* - 11053

Peak	RT (min)	Compound name	%
1	5,47	ISOVALERALDEHYDE	0,03
2	7,37	alpha-PINENE	3,16
3	8,61	CAMPHENE	0,02
4	10,15	beta-PINENE	0,46
5	12,86	beta-MYRCENE	0,88
6	12,92	alpha-PHELLANDRENE	0,84
7	13,10	psi-LIMONENE	0,02
8	13,69	alpha-TERPINENE	0,23
9	15,01	LIMONENE	8,03
10	15,77	1,8-CINEOLE	80,07
11	15,84	1,3,8-p-MENTHATRIENE	0,04
12	16,96	cis-beta-OCIMENE	0,13
13	17,36	trans-ARBUSCULON	0,02
14	17,58	gamma-TERPINENE	2,59
15	17,67	MENTHATRIENE ISOMER	0,05
16	17,96	trans-beta-OCIMENE	0,04
17	19,01	p-CYMENE	3,17
18	19,76	TERPINOLENE	0,10
19	25,64	ALLO-OCIMENE	0,03
20	29,42	alpha, p-DIMETHYLSTYRENE	0,02
21	29,77	LINALOOL cis-OXIDE	0,01
22	36,22	LINALOOL	0,03
23	39,23	TERPINENE-4-OL	0,02
24	-	AROMADENDRENE	Nd
25	-	trans-PINOCARVEOL	Nd
26	44,45	alpha-TERPINEOL	0,03
27	-	GLOBULOL	Nd
		TOTAL	99,99

Limitación de Responsabilidad

Consulta toda la información técnica relevante específica del producto antes de su uso. La información contenida en este documento se obtiene de fuentes actuales y confiables. Lottush, proporciona la información contenida en este documento, pero no garantiza su exhaustividad o precisión. Las personas que reciben esta información deben ejercer su juicio independiente para determinar si es adecuada para un propósito particular. El usuario del producto es el único responsable del cumplimiento de todas las leyes y reglamentos aplicables al uso de los productos, incluidos los derechos de propiedad intelectual de terceros. Como los usos ordinarios o de otro tipo de este producto están fuera del control de Lottush, no se hace ninguna representación o garantía, expresa o implícita, en cuanto a los efectos de dichos usos, (incluyendo daños o lesiones), o los resultados obtenidos. La responsabilidad de Lottush se limita al valor de los bienes y no incluye ninguna pérdida consecuente. Lottush no será responsable de ningún error o demora en el contenido, ni de ninguna acción tomada en base al mismo. Lottush no será responsable de ningún daño que resulte del uso o la confianza en esta información.