

SAFETY DATA SHEET (SDS)

Version 2.0

Revision Date : April 25,2022

Print Date : March 5, 2023

1. PRODUCT AND COMPANY IDENTIFICATION

Product name	:	Wintergreen Essential Oil (Nepal)
Botanical name	:	Gaultheria fragrantissima
INCI name	:	Gaultheria Fragrantissima Leaf Oil
CAS #	:	Not Available
Country of Origin	:	Nepal
Product use	:	Domestic and Industrial

2. HAZARDS IDENTIFICATION

Emergency Overview

GHS Classification

Acute toxicity, Oral - Category 4

Skin corrosion/irritation - Category 3

Hazardous to the aquatic environment, acute hazard - Category 3

Hazardous to the aquatic environment, long-term hazard - Category 3

GHS Label elements, including precautionary statements



Signal: Warning

Hazard statement(s)

H302	Harmful if swallowed.
H316	Causes mild skin irritation.
H402	Harmful to aquatic life.
H412	Harmful to aquatic life with long-lasting effects.

Precautionary statement(s)

P264	Wash skin thoroughly after handling.
P270	Do not eat, drink or smoke when using this product.
P273	Avoid release to the environment.
P301+P312	IF SWALLOWED: Call a POISON CENTER/doctor/if you feel unwell.

P330	Rinse mouth.
P332+P313	If skin irritation occurs: Get medical advice/attention.
P501	Dispose of contents/container according to local regulations.

3. COMPOSITION / INFORMATION INGREDIENTS

Product Name	CAS NO	EC NO	Concentration
Gaultheria Fragrantissima Leaf Oil	N/A	-	100%

4. FIRST AID MEASURES

Eye contact

Immediately flush eyes with plenty of cool water for at least 15 minutes. Get medical attention if irritation occurs.

Skin contact

Remove contaminated clothing. Wash area with soap and water. If irritation occurs, get medical attention.

Inhalation

If inhaled, removed to fresh air. Get medical attention if symptoms appear.

Ingestion

Seek medical attention or contact local poison control center.

5. FIRE FIGHTING MEASURES

Suitable extinguishing media

Water spray, foam, dry powder, carbon dioxide.

Unsuitable extinguishing media

Water spray, water jet.

Special protective equipment and precautions for fire-fighters

Wear proper protective equipment. Exercise caution when fighting any chemical fire. Use water spray or fog for cooling exposed containers.

Special hazards arising from the substance or its combustible products

Possible production of toxic fumes in case of fire.

Resulting gases

Carbon oxides

6. ACCIDENTAL RELEASE MEASURES

Personal precautions, protective equipment and emergency procedures.

Avoid all flammable sources. Ventilate premises. Do not smoke.

Environmental precautions

Prevent entry to sewers and public waters. Notify authorities if product enters sewers or public waters.

Methods and materials for containment and cleaning up

Large spills should be cleaned with inert absorbent material that will be scanned and then destroyed in accordance with existing regulations.

7. HANDLING AND STORAGE

Precautions for safe handling

No direct lighting. No smoking. Ensure prompt removal from eyes, skin and clothing. Wash hands and other exposed areas with mild soap and water before eating, drinking or smoking and when leaving work. Handle in accordance with good industrial hygiene and safety procedures.

Conditions for safe storage, including any incompatibilities

Provide local exhaust or general room ventilation to minimize dust and/or vapour concentrations. Keep container closed when not in use.

8. EXPOSURE CONTROLS AND PERSONAL PROTECTION

Exposure controls

Eyes

Use tightly sealed goggles.

Skin

If skin contact or contamination of clothing is likely, protective clothing should be worn. Use protective gloves.

Respiratory

In case of insufficient ventilation, wear suitable respiratory equipment.

Ingestion

Not for ingestion.

9. PHYSICAL AND CHEMICAL PROPERTIES

Appearance	:	Colorless to pale reddish thin clear liquid.
Odor	:	Characteristic sweet, woody, distinct 'medicinal' scent.
Initial b.p and boiling range	:	Boiling Point: 215 to 225 °C
Flash point	:	>100°C
Vapor pressure	:	Not available.
Relative density	:	1.096 to 1.190 @ 20°C
Solubility (ies)	:	Soluble in oils and alcohol. Insoluble in water.
Refractive index	:	1.533 to 1.538 @ 20°C
Optical rotation	:	(-10.5°) to (-0.5°) @ 20°C

10. STABILITY AND REACTIVITY

Reactivity

This material presents no significant reactivity hazard.

Chemical stability

Chemically stable.

Possibility of hazardous reactions

Hazardous polymerization will not occur.

Conditions to avoid

Avoid sparks, flame and other heat sources.

Incompatible materials

Strong oxidizing agents.

Hazardous decomposition products

Carbon Oxides.

11. TOXICOLOGICAL INFORMATION

Acute toxicity

Not available.

Respiratory or skin sensitization

May cause an allergic skin reaction

Ingestion

Not for ingestion.

12. ECOLOGICAL INFORMATION

Ecotoxicity

Toxic to aquatic organisms, may cause long-term adverse effects environment. Avoid any pollution of ground, surface or underground water.

Persistence and degradability

Low persistent level and readily biodegradable.

Bio - accumulative potential

Not Established.

Mobility in soil

Low mobility in soil.

Other adverse effects

Not Established.

13. DISPOSAL CONSIDERATION

Dispose of product in accordance with local, state or provincial and federal regulations. Check with local municipal authority to ensure compliance.

14. TRANSPORT INFORMATION

UN Number

Not regulated.

US DOT Shipping Description (Land)

Not regulated.

IMO-IMDG Shipping Description (Sea)

Not regulated.

IATA Shipping Description (Air)

Not regulated.

15. REGULATORY INFORMATION

GHS Hazard Statements

Please refer to section 2.

GHS Precautionary Statements

Please refer to section 2.

16. OTHER INFORMATION

Revision date : April 25,2022

CERTIFICATE OF ANALYSIS

Product : **Wintergreen Essential Oil (Nepal)**

Lot No : 11341A10223

Best Before : April, 2025

<u>Properties</u>	<u>Specifications</u>	<u>Results</u>
Appearance	: Colorless to pale reddish liquid.	Complies
Odor	: Characteristically aromatic, woody and sweet.	Complies
Solubility	: Soluble in oils and alcohol. Insoluble in water.	Complies
Specific Gravity	: 1.096 to 1.190 @ 20°C	1.1822
Refractive Index	: 1.533 to 1.538 @ 20°C	1.5358
Methyl salicylate	: ≥ 98 %	99.67 %

Storage: Store in air tight containers; in a cool dry area; away from direct sunlight.

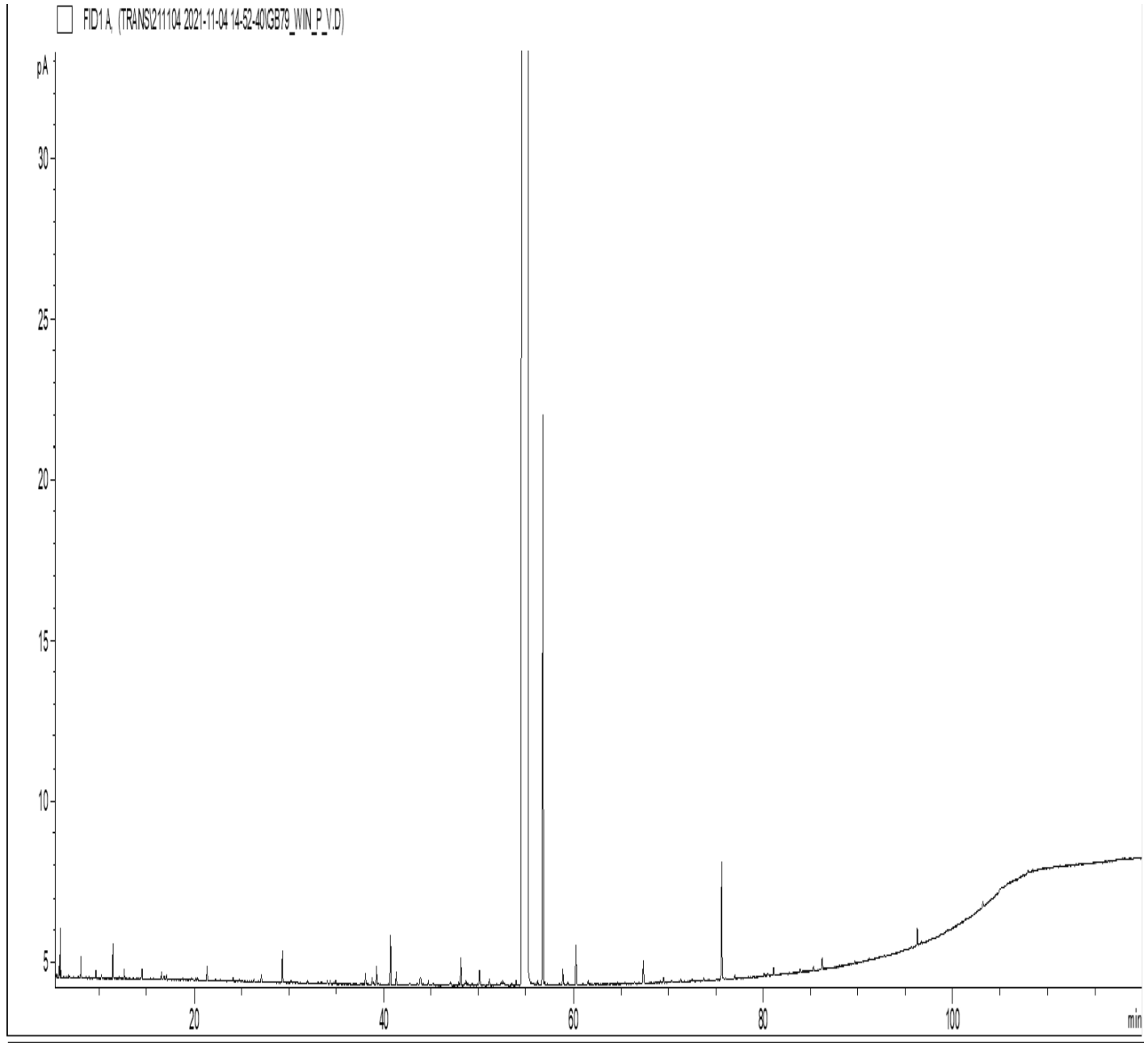
Limitación de Responsabilidad

Consulta toda la información técnica relevante específica del producto antes de su uso. La información contenida en este documento se obtiene de fuentes actuales y confiables. Lottush, proporciona la información contenida en este documento, pero no garantiza su exhaustividad o precisión. Las personas que reciben esta información deben ejercer su juicio independiente para determinar si es adecuada para un propósito particular. El usuario del producto es el único responsable del cumplimiento de todas las leyes y reglamentos aplicables al uso de los productos, incluidos los derechos de propiedad intelectual de terceros. Como los usos ordinarios o de otro tipo de este producto están fuera del control de Lottush, no se hace ninguna representación o garantía, expresa o implícita, en cuanto a los efectos de dichos usos, (incluyendo daños o lesiones), o los resultados obtenidos. La responsabilidad de Lottush se limita al valor de los bienes y no incluye ninguna pérdida consecuente. Lottush no será responsable de ningún error o demora en el contenido, ni de ninguna acción tomada en base al mismo. Lottush no será responsable de ningún daño que resulte del uso o la confianza en esta información.

GCMS ANALYSIS

PRODUCT NAME: WINTERGREEN ESSENTIAL OIL (NEPAL) – 11341

DATE: October 4, 2022



Due to volume turnover, this report is not lot specific. It is representative of the quality of this oil produced by the manufacturer of this product. Specific lots may vary slightly as is the case in natural products.

GCMS ANALYSIS (cont'd,)

PRODUCT NAME: WINTERGREEN ESSENTIAL OIL (NEPAL) – 11341

Peak	RT (min)	Compound name	%
1	5,94	ACETONE	0,01
2	8,10	alpha-PINENE	Tr,
3	11,44	beta-PINENE	0,01
4	16,88	1,8-CINEOLE	Tr,
5	29,30	3-HEXEN-1-OL	0,02
6	40,72	LINALOOL	0,02
7	48,12	ETHYL BENZOATE	0,02
8	50,11	alpha-TERPINEOL	0,01
9	55,25	METHYL SALICYLATE	99,49
10	56,76	ETHYL SALICYLATE	0,32
11	60,28	BENZYL ALCOHOL	0,02
12	67,36	PHENOL	0,01
13	75,61	EUGENOL	0,07
		TOTAL	100,00

Limitación de Responsabilidad

Consulta toda la información técnica relevante específica del producto antes de su uso. La información contenida en este documento se obtiene de fuentes actuales y confiables. Lottush, proporciona la información contenida en este documento, pero no garantiza su exhaustividad o precisión. Las personas que reciben esta información deben ejercer su juicio independiente para determinar si es adecuada para un propósito particular. El usuario del producto es el único responsable del cumplimiento de todas las leyes y reglamentos aplicables al uso de los productos, incluidos los derechos de propiedad intelectual de terceros. Como los usos ordinarios o de otro tipo de este producto están fuera del control de Lottush, no se hace ninguna representación o garantía, expresa o implícita, en cuanto a los efectos de dichos usos, (incluyendo daños o lesiones), o los resultados obtenidos. La responsabilidad de Lottush se limita al valor de los bienes y no incluye ninguna pérdida consecuente. Lottush no será responsable de ningún error o demora en el contenido, ni de ninguna acción tomada en base al mismo. Lottush no será responsable de ningún daño que resulte del uso o la confianza en esta información.