

SMARTACONNECT GATEWAY

Cellular/Satellite Hybrid Tracker and
communication system



INTRODUCTION:

You're sailing the open ocean, miles from land. You're relying on your security system to keep your yacht safe, but what if it fails?

What if someone boards your yacht and takes everything you own? Or what if you're attacked by pirates? The thought of being stranded in the middle of the ocean, with no way to call for help, is terrifying. And what if you're caught in a big storm and can't get a decent weather forecast?

The fear of losing your yacht and putting your family in danger is overwhelming.

A family arrives at harbor on their boat, only to find out that it has been broken into and damaged.

Their vacation is ruined, and they're left feeling violated and scared. The thought of someone trespassing on their property and destroying their belongings is heartbreaking.

That's the reality for many yacht owners, they are around 100 millions in the world, and 17 millions only in the USA.



AROUND
100 MILLIONS
YACHTS
IN THE WORLD

“Easy to
install and
to use”

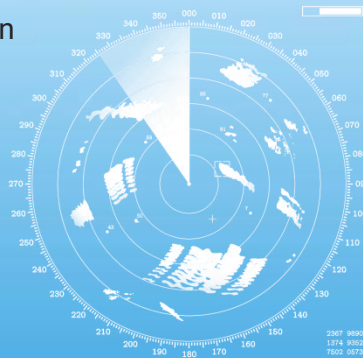


INTRODUCTION:

The security and communication systems available today are often complex and expensive, and they're not always easy to use.

And even if you do have a good security system, there's no guarantee that it will work when you need it most.

But what if there was a better way? What if there was a single, all-in-one security & communication system that was easy to install and to use, and that could protect your yacht from any threat?



SOLUTION:

Well, now there is. Introducing the new SmartConnect Gateway. This brand-new system combines the best of all the existing security technologies into a single, easy-to-use package.

With the SmartConnect Gateway, you can rest assured that your yacht is safe, no matter where you are in the world.

With SmartConnect, you can:



Track your yacht's location in real time, anywhere in the world



Receive 24/7 distress alerts



Set up custom alerts for security and other purposes



Create a private WiFi network for onboard devices



Connect to the Iridium Certus satellite Network



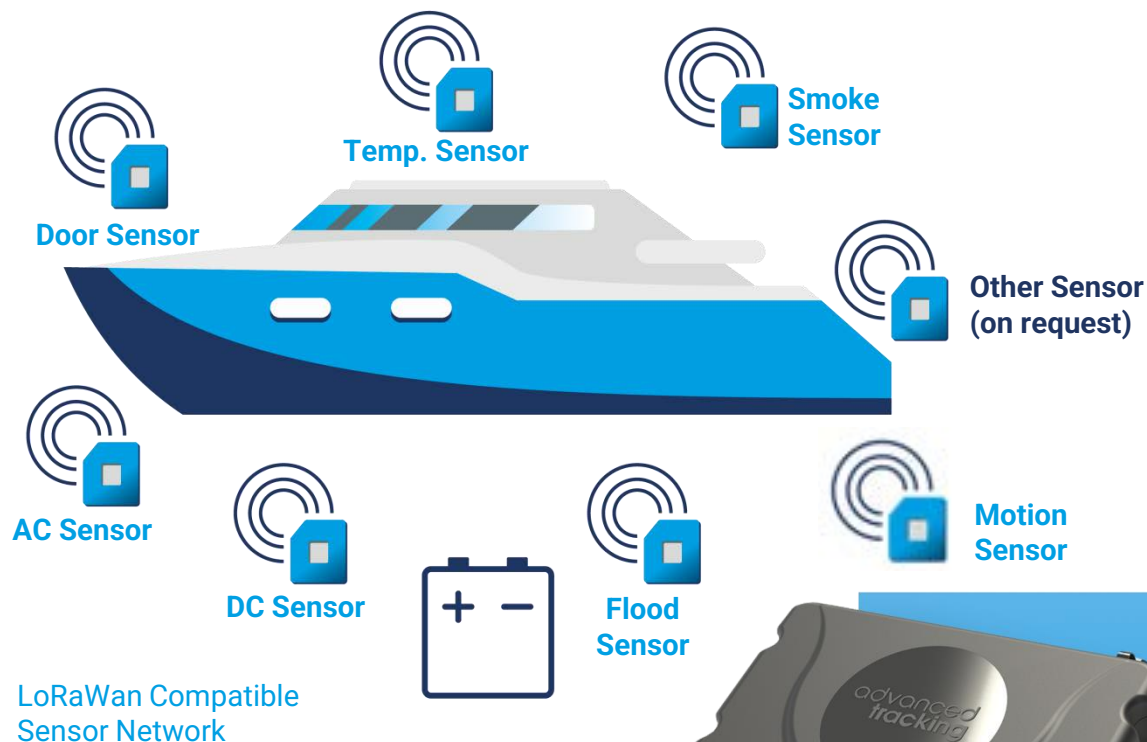
Connect to the Starlink or any other satellite service



Collect ocean data with wireless sensors

SmartConnect is the perfect solution for yachtsmen who demand the best. It's easy to install, easy to use, and covers the entire world.

- Wireless sensors using LoRaWan system technology.
- Stand-alone sensors with internal batteries.
Autonomy: > 3 years+ - up to 5 years
- Easy to install in the boat – no cables.
- Up to 100 different sensors can be added. Any LoraWan compatible sensor can be added.
- Long range sensors.
- Encrypted communication between the main unit and the sensors.
- Wireless sensors for Ocean data collection

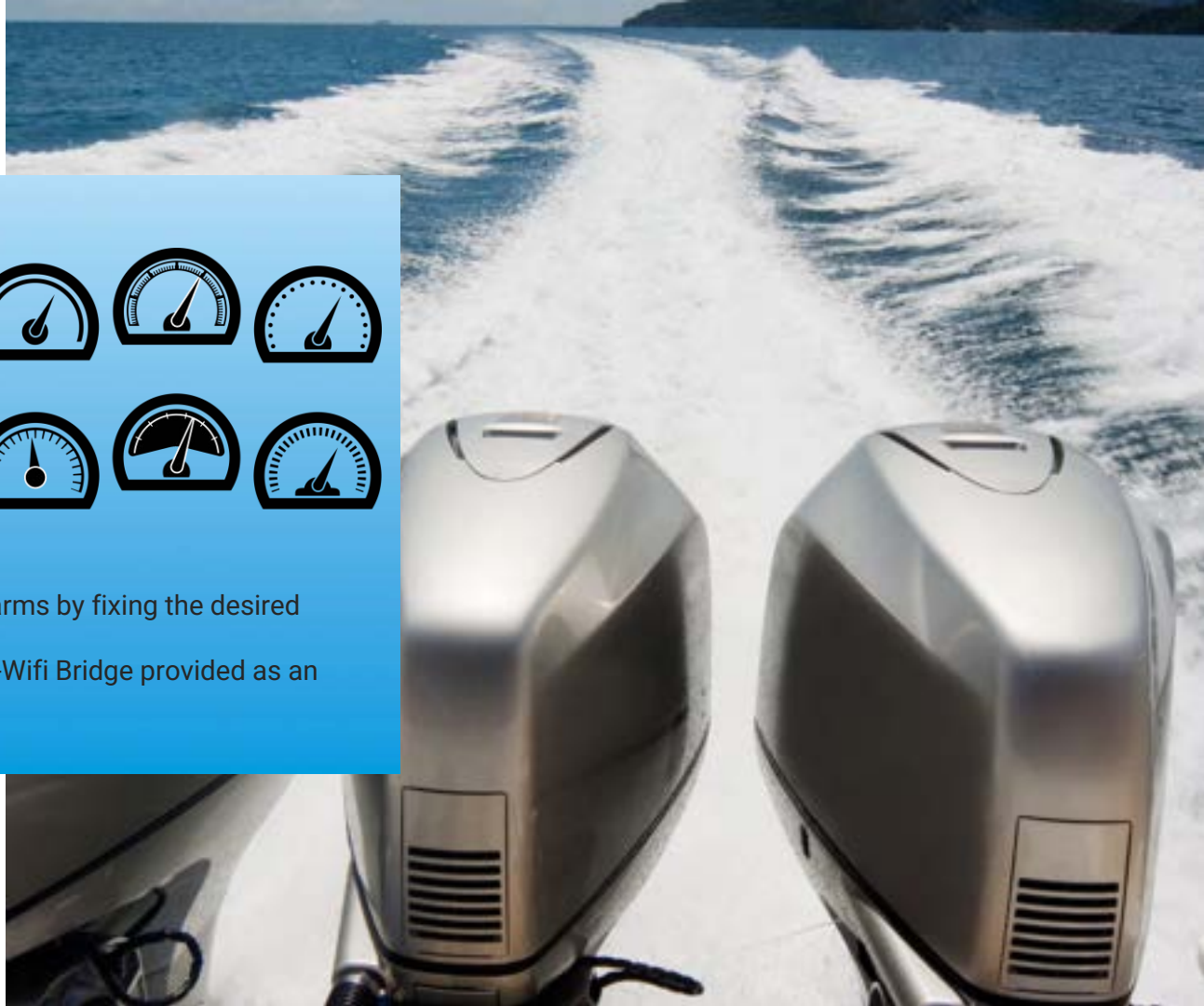


NMEA MEASUREMENTS*:

- Engine RPM
- Wind Speed
- Water Depth
- Engine Temperature
- Fuel
- Multiple Engine Measurements



Capable to create custom alarms by fixing the desired threshold.
(*by using an external NMEA-Wifi Bridge provided as an option)



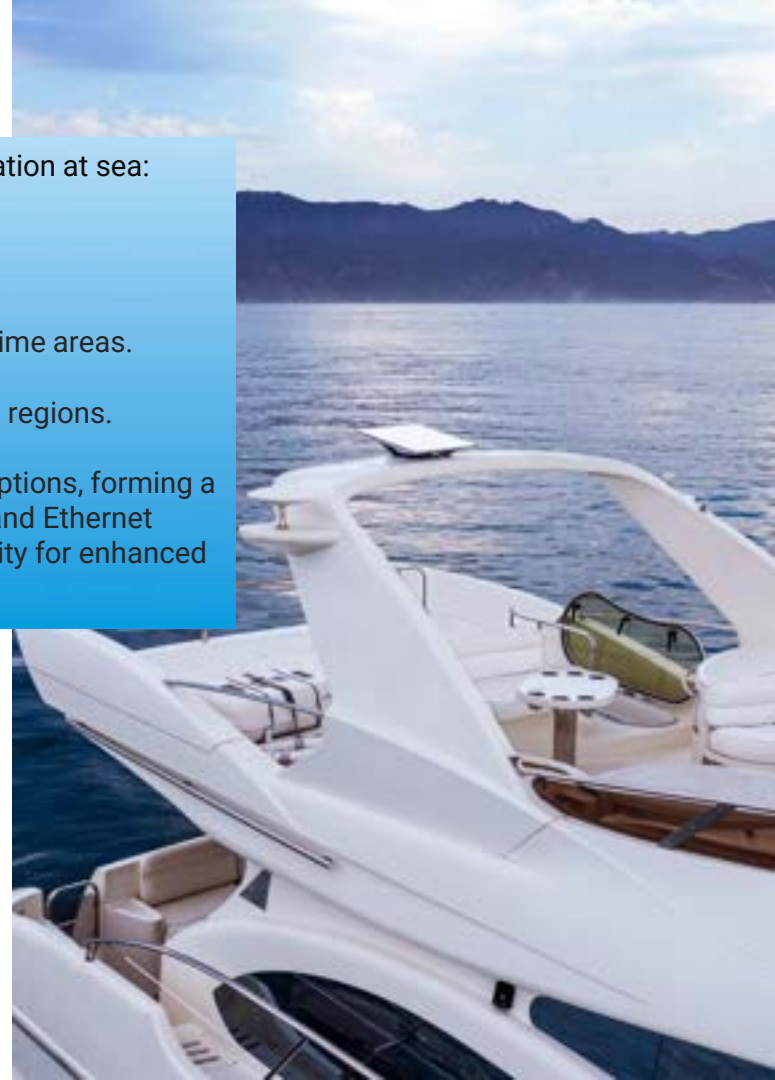
INTERNET CONNECTIVITY:

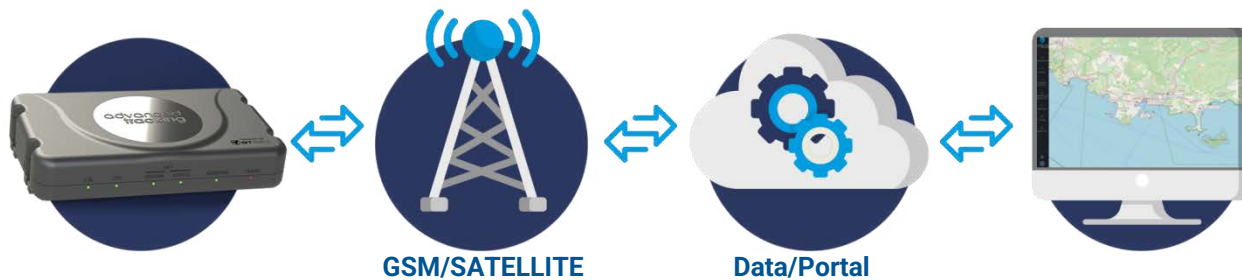
Integrating multiple internet connectivity methods to ensure seamless communication at sea:

- Ethernet Gigabit Port: Designed for connecting to any existing router (Tested with Starlink satellite internet antenna integration)
- Iridium Satellite Network: Reliable global internet access, ideal for remote maritime areas.
- 4G Cellular Network: High-speed internet connectivity in coastal and near-shore regions.

Our SmartConnect Gateway seamlessly integrates multiple internet connectivity options, forming a unified high-speed Wi-Fi network onboard. With comprehensive satellite, cellular, and Ethernet integration, our Gateway offers global coverage, high-speed access, and adaptability for enhanced maritime operations.

The result? Improved efficiency, productivity, and safety, with uninterrupted connectivity even in remote areas, making it an essential tool for modern maritime communication needs.





SmartConnect Tracker

- Hybrid Unit
- Cellular/Satellite Tracking
- Cellular/Satellite communication
- Wireless sensors
- Burglar alarm
- Internal battery backup
- Wifi
- NMEA
- Ethernet

Advanced Tracking Servers

- Network management
- Unit management
- Tracker/System configuration
- Data enrichment
- API for third parties

www.konectis.com

- Tracking access
- Managing the tracker
- Account management
- Alert Management
- Reports
- Weather Information
- Geofencing
- Sharing social networks

TECHNICAL INFORMATION:

General	<table><tr><td data-bbox="423 190 645 217">Communication</td><td data-bbox="687 190 1518 217">4G LTE CAT-13 / Fallback 3G – Argos/Kineis satellite – Iridium Certus</td></tr><tr><td data-bbox="423 260 529 288">Battery</td><td data-bbox="687 255 1620 381">+12V/+24V / Solar Pannel (VOC Max 30V) the batteries are rechargeable with the main DC input (12V/24V or solar panel) Charge: 0°C~ +45°C In-use: -20°C~ +45°C</td></tr></table>	Communication	4G LTE CAT-13 / Fallback 3G – Argos/Kineis satellite – Iridium Certus	Battery	+12V/+24V / Solar Pannel (VOC Max 30V) the batteries are rechargeable with the main DC input (12V/24V or solar panel) Charge: 0°C~ +45°C In-use: -20°C~ +45°C		
Communication	4G LTE CAT-13 / Fallback 3G – Argos/Kineis satellite – Iridium Certus						
Battery	+12V/+24V / Solar Pannel (VOC Max 30V) the batteries are rechargeable with the main DC input (12V/24V or solar panel) Charge: 0°C~ +45°C In-use: -20°C~ +45°C						
Positions	<table><tr><td data-bbox="423 461 616 489">GPS Receiver</td><td data-bbox="687 461 1673 587">72-channel u-blox M8 engine GPS L1C/A, SBAS L1C/A, QZSS L1C/A, QZSS L1 SAIF, GLONASS L10F, BeiDou B1I, Galileo E1B/C Tracking & Navigation: -166 dBm Cold start: -147 dBm Hot start: -157 dBm</td></tr></table>	GPS Receiver	72-channel u-blox M8 engine GPS L1C/A, SBAS L1C/A, QZSS L1C/A, QZSS L1 SAIF, GLONASS L10F, BeiDou B1I, Galileo E1B/C Tracking & Navigation: -166 dBm Cold start: -147 dBm Hot start: -157 dBm				
GPS Receiver	72-channel u-blox M8 engine GPS L1C/A, SBAS L1C/A, QZSS L1C/A, QZSS L1 SAIF, GLONASS L10F, BeiDou B1I, Galileo E1B/C Tracking & Navigation: -166 dBm Cold start: -147 dBm Hot start: -157 dBm						
Cellular	<table><tr><td data-bbox="423 674 494 702">Data</td><td data-bbox="687 674 1035 702">4G LTE CAT-13 / Fallback 3G</td></tr><tr><td data-bbox="423 745 654 805">Operating Bands and Carriers</td><td data-bbox="687 745 1518 805">Worldwide Global LTE bands, including B14 FirstNet, B71 T-Mobile, B48 for CBRS</td></tr><tr><td data-bbox="423 887 484 915">SIM</td><td data-bbox="687 887 1228 915">MFF2 (embedded SIM) + External Plastic SIM</td></tr></table>	Data	4G LTE CAT-13 / Fallback 3G	Operating Bands and Carriers	Worldwide Global LTE bands, including B14 FirstNet, B71 T-Mobile, B48 for CBRS	SIM	MFF2 (embedded SIM) + External Plastic SIM
Data	4G LTE CAT-13 / Fallback 3G						
Operating Bands and Carriers	Worldwide Global LTE bands, including B14 FirstNet, B71 T-Mobile, B48 for CBRS						
SIM	MFF2 (embedded SIM) + External Plastic SIM						

TECHNICAL INFORMATION:

Sensor Operation Range (LoraWan)

Environmental

Temperature [-40, +85; Absolute accuracy ± 0.5 °C]
Humidity [Absolute accuracy ± 3 %RH]
Pressure [300...1100 hPa, Absolute accuracy ± 1 hPa]

Certification

Certifications*:

Ongoing for CE certification and Iridium certification

Network Targets*:

International/Europe: MVNO, Deutsche Telekom, Telia, Orange, Vodafone

Physical

Dimensions

280 x 180 x 50 mm

Weight

1700 gr

Environmental Operating Range

Temp

-20C to +45C

Humidity

95% R.H. @ 50C non-condensing



Commercial Department

commercial@advanced-tracking.com

www.advanced-tracking.com