

# IgA Nephropathy

## What is IgA nephropathy?

**IgA nephropathy** is one of the most common causes of kidney disease.

In IgA nephropathy, an abnormal form of IgA (short for **Immunoglobulin A**, an antibody) deposits in the kidney and causes injury.

## What are the signs and symptoms of IgA nephropathy?

In some cases, IgA nephropathy may have no symptoms.

The most common sign and symptom is blood in the urine (**hematuria**).

**Hematuria** may be a small amount and only detected by a urine test, or may be visible in the urine.

Other signs and symptoms may include:

- High blood pressure (**hypertension**)
- Protein in the urine (**proteinuria**)
- Swelling of the feet (**edema**)

## What causes IgA nephropathy?

The cause of IgA nephropathy in some patients is not known.

Known causes of IgA nephropathy include:

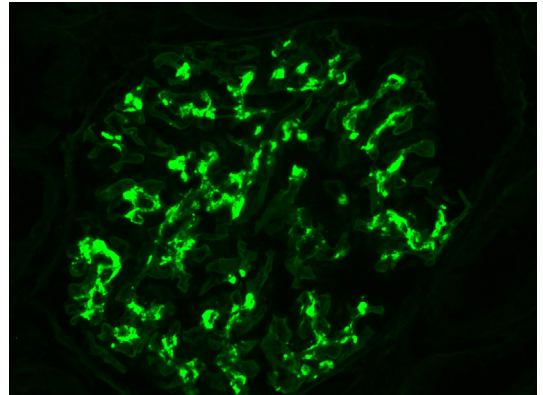
- Infection
- Liver disease
- Gastrointestinal disease

## How is IgA nephropathy diagnosed?

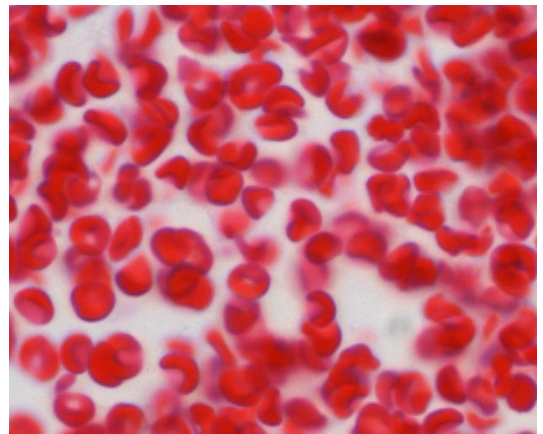
A **kidney biopsy** is the only way to diagnose IgA nephropathy because other kidney diseases produce similar symptoms and laboratory abnormalities.

## What happens to a patient with IgA nephropathy?

- Some patients may improve without treatment
- Some patients may respond to treatment
- Some patients will have hematuria or proteinuria for many years
- Some patients will develop renal failure and require dialysis or kidney transplantation



IgA deposits in the kidney biopsy



Red blood cells may be seen in the urine