

OPERA® SIGNATURE
END WALL PROTECTOR

Installation and User Guide





Before you begin! We recommend that you conduct a risk assessment to ensure that the Opera Signature End Wall Protector meets your requirements and does not become a trip hazard.

1. General Information and Safety

1.1 Intended & Non Intended Uses

The Opera Signature End Wall Protector is designed to reduce the risk of an Opera Signature Profiling Bed being placed too close to a wall, plug socket, skirting board or fixture, which may be damaged by the bed. The wall protector gives a 90mm clearance from the bed surrounds to the wall or fixture.

The Opera Signature Wall Protector is designed to be used with Opera Signature Profiling beds. Opera will not be liable for any hazards, injury, or damage arising from using the wall protector incorrectly or with a different bed.

2. User Instructions



Always read the instruction manual before using the wall protectors, pay particular attention to the instructions below.



Always carry out a risk assessment to ensure that the wall protector is suitable for the required application. Ensure that the installation of wall protectors does not create risks for both staff and users, in particular, trip hazards.



The wall protectors should only be fitted to the bed at points where the bed is against a wall, socket, fixture or skirting board, non compliance with this may result in creating trip hazards. This can result in serious injury.

If the bed is moved away from the wall without the wall protectors being removed, this can result in creating trip hazards, and may result in serious injury. Always remove the wall protectors before moving and relocating the bed.



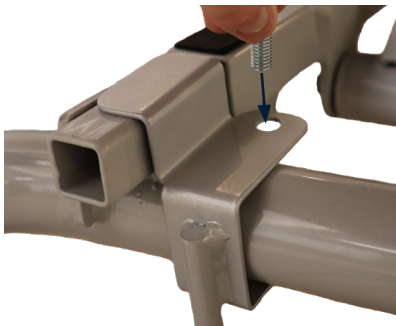
Check the fixings monthly to ensure that there are no loose parts.

It is recommended that wall protectors are attached to the columns of the beds that face a wall, socket or skirting board. To attach the wall protectors, please follow the instructions below:

1. Remove the two bolts from the wall protector.
2. Slide the wall protector over the tubular bar between the castors at the head end of the bed.
3. Tighten both bolts to secure the wall protector in position.

When in doubt, consult Opera at support@operabeds.com.

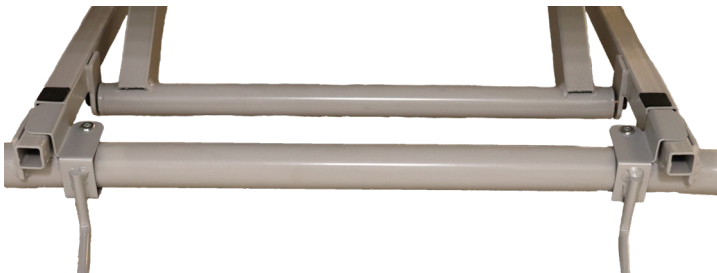
1 | Place the screw into the top hole of the wall protector.



2 | Using an Allen key, tighten the bolt into the nut.



3 | Repeat the process for the right side.





Azure House, Connaught Road, Kingswood, Hull, HU7 3AP

0333 222 8584 | support@operabeds.com | operabeds.com

Version 3 | Published in August 2022