



# **Instructions for Use**

**Assembly & Operation**

**Overbed Reading Lamp**

**FLV046**

**Compatible with Opera® Classic and Signature Beds**

## 1. General information

---

Before the first use:

Read the instructions for use conscientiously and completely!

Please pay particular attention to the various safety instructions. The bed lamp should be cleaned and disinfected before first use and before each re-use.

Accessories carry the CE mark and meet the requirements for safety and functionality. However, these safety requirements can only be met if the user is convinced of the proper condition before using the bed lamp.

Please note the Medical Device Operator Ordinance (MPBetreibV, 2021).

### 1.1 Explanation of the symbols used

In these operating instructions, important information is indicated by the following symbols:



Read information with this symbol carefully and observe it urgently.  
This information is relevant to safety.



This symbol warns of dangerous voltage. There is a danger to life!



Manufacturer of the medical device



manufacturing date



Symbol for reading instruction manual

### 1.2 General safety instructions

- Use the bed lamp in combination with tecfor care beds.
- No parts of the patient's body may be between the lying surface and the bed lamp while the nursing bed's adjustment functions are being operated.
- Under no circumstances may the bed lamp be used improperly
- When using side rails, there is an increased risk of crushing and pinching between the side rails and the bed lamp.

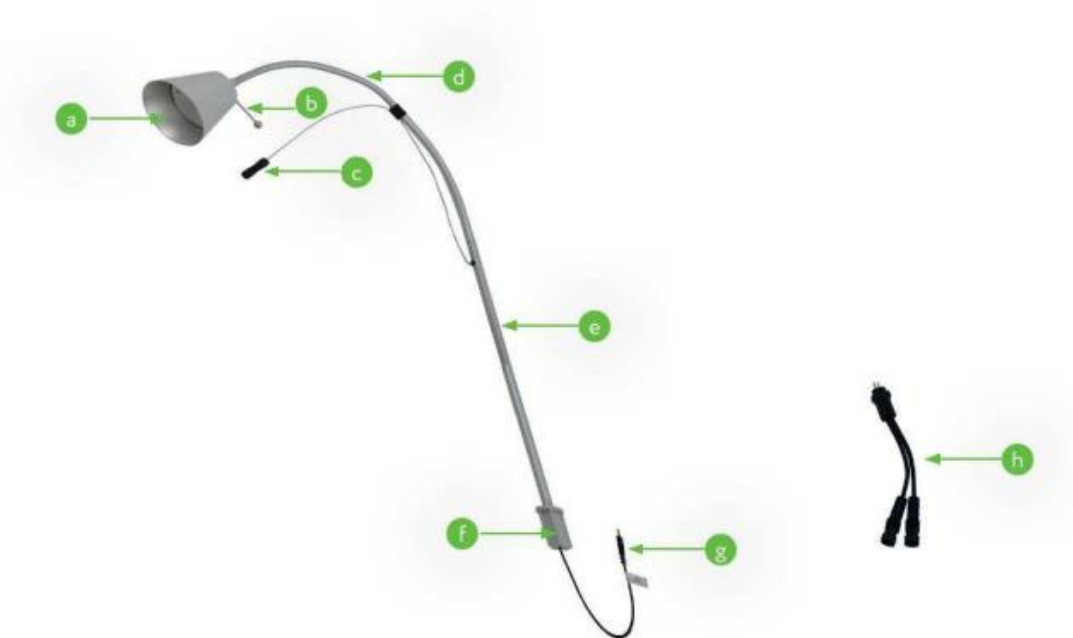
## 2. Intended purpose

The bed lamp is available as an accessory for tecfor care beds, which are classified as class I medical devices.

The bed lamp is designed to support the intended purpose of the tecfor care beds. It enables a well-lit environment on and in the care bed and contributes to well-being.

The intended use is installation in the left or right lifting socket on tecfor care beds. Any other use is considered improper and is excluded from possible liability.

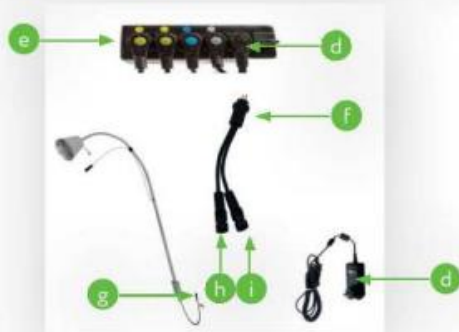
## 3. General overview




- a. LED lamp (changeable)
- b. adjustment rod
- c. On/off switch
- d. flexible lamp neck
- e. rigid lamp rod
- f. Plastic receiving cylinder for attachment to the bed
- g. connector plug
- h. Y connection cable

## 4. Assembly

To assemble the bed lamp, proceed as follows:



1. bed lamp can be plugged into the socket (a) on the left or right head side of the care bed.
2. Put the connecting cable of the bed lamp (b) through the socket (a) on the care bed and insert the plastic socket cylinder(c) into the socket (a).
3. Pull the mains plug out of the mains socket.
4. Pull the black plug of the power cord (d) out of the control box (e).
5. Plug the single plug of the Y connection cable (f) into the free socket in the control box (e).
6. Insert the bed lamp plug (g) into the first socket of the Y connection cable (h).
7. Plug the plug of the power pack (d) into the second socket of the Y connection cable (i).
8. Lay the bed lamp cable under the bed in such a way that it cannot be pinched or kinked. 
9. Now plug the mains plug back into the mains socket.

## 5. Care, cleaning and disinfection

Before cleaning and disinfecting, the mains plug of the care bed must be disconnected from the mains and hung up securely.



Clean and disinfect the bed lamp before first use and before each reuse. The bed lamp should be wiped by hand with a damp cloth for cleaning. We recommend suitable cleaning and care products as cleaning agents for wooden and plastic furniture.

Household cleaners without ammonia and abrasives are also permitted, but should be dermatologically tested. Solvents and abrasives are not permitted as they attack and damage the various surfaces of the bed lamp.

For disinfection:

Note: In order to achieve effective disinfection, the bed lamp must be cleaned beforehand. Disinfection is possible by spray or wipe disinfection with commercially available disinfectants. Do not use disinfectants containing chlorine as they can have a corrosive effect on metals, plastics etc. and are not environmentally friendly.

For wipe disinfection (surface disinfection) we recommend approved disinfectants and disinfection procedures from the list of disinfectants and disinfection procedures tested and approved by the Robert Koch Institute (<https://www.rki.de>) or from the VAH disinfectant list (Verbund für Angewandte Hygiene e.V. / <https://vah-online.de>).

## 6. Maintenance

The bed lamp must be checked regularly and before each re-use in order to detect damage and wear and to ensure safe use. If defects or damage become apparent as a result of this check, the bed lamp may no longer be used and must be dismantled.

If you have any doubts about the safety or function of even just a part of the bed lamp during the maintenance measures described below, it must never be put back into operation. Then contact the supplier or manufacturer.

Pos.	Test instruction	OK	n. OK	Comment
1.	Examination of the basic prerequisite			
1.1	Is the general condition okay?			
1.2	Type plate present and legible?			
1.3	Instructions for use available and accessible to personnel?			
1.4	Appropriate and safe use?			
2.	Visual inspection			
2.1	No surface damage or corrosion?			
2.2	no deformation?			
2.3	Cable undamaged (no kink, damaged insulation, etc.)?			
2.4	Connection plug without damage?			
3.	functional test			
3.1	Bed lamp can be flexibly adjusted on the lamp neck?			
3.2	Plug can be easily inserted into the socket of the Y connection cable			
3.3	Switch can be operated easily and light goes on or off?			

overall rating

Overall assessment of the bed lamp in order?

Remarks: .....

Place / Date: ..... Inspector: .....

Next test: ..... Signature: .....

## 7. Technical specifications

---

light color:	warm white
Power supply:	via the care bed's power pack or separately with its own power supply
cable length:	2010mm
material:	steel
color:	RAL 9006 (silver)

**Opera Beds**  
Azure House  
Connaught Road  
Hull  
HU7 3AP  
03702184069