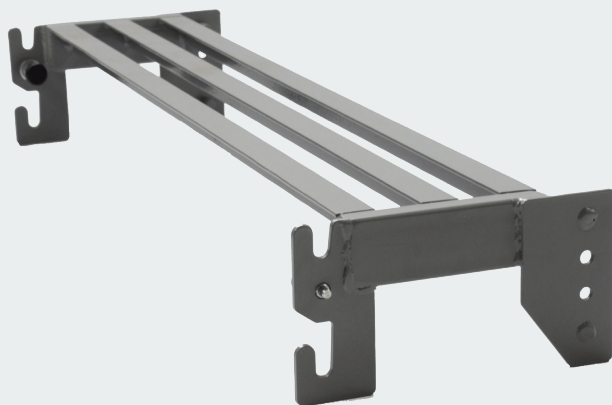




Enhancing Lives,
Delivering Comfort

OPERA® CLASSIC BED 8"
EXTENSION PLATFORM

Installation and User Guide





Before you begin! We recommend that two people install this bed extension platform to avoid injury - Observe the general manual handling guidelines.

1. General Information and Safety

The Opera Classic Bed 8" Extension Platform is designed to extend the Opera Classic Profiling Bed by 200mm (8") for taller users.

The Opera Classic Bed 8" Extension Platform is designed to be used with the Opera Classic Profiling beds. Opera will not be liable for any hazards, injury or damage arising from using the extension platform incorrectly or with a different bed.

Any incidents or issues must be reported to Opera at, support@operabeds.com.

2. Installation and Commissioning

Contents

(A) Extension Platform



Before you begin, you will also need:

- Tools: 3mm Allen Key, A cross head screw driver.

1. Remove the Footboard

Firstly, the footboard actuator will need to be removed from the control box to prevent damage. Pull up the back rest platform and remove the socket cover by loosening the screws and removing the cover. The footboard actuator can then be disconnected from the control box.



The side rails will then be removed by loosening the side rail screws with an allen key and detaching the side rail. The side rails can then be laid on the floor.



To remove the footboard pull and twist the black thumb screws on the footboard so that they are in the unlocked position. Detach the footboard by pulling the lower bed platform upwards and setting the footboard to the side.



2. Attach the Extension Platform

Attach the extension platform to the leg rest platform by pulling the leg rest platform upwards and placing it onto the extension platform.



Secure in place by tightening the black thumb screws on both sides of the bed.



3. Attach the Footboard

Attach the footboard to the end of the mattress leg rest platform by lifting up the bed platform and lining it up with the footboard brackets.



Twist the black thumb screws so that they are in the locked position.



Plug the actuator cable back into the control box. Attach the side rails and tighten the side rail screws.



Ensure that all thumb screws are correctly in place and in their locked position before using the bed.

Notes

Notes



Azure House, Connaught Road, Kingswood, Hull, HU7 3AP

0333 222 8584 | support@operabeds.com | operabeds.com

Version 1 | Published in October 2022