



CRYSTAL ART GINGERBREAD HOUSE GIFT BOX INSTRUCTIONS

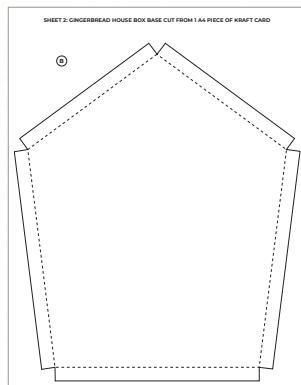
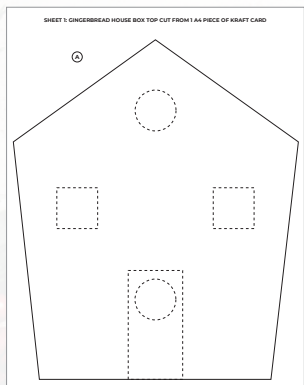


Craft Buddy Ltd
Unit 7 Anglo Business Park
Asheridge Road, Chesham
HP5 2QA, UK
www.craftbuddyltd.co.uk

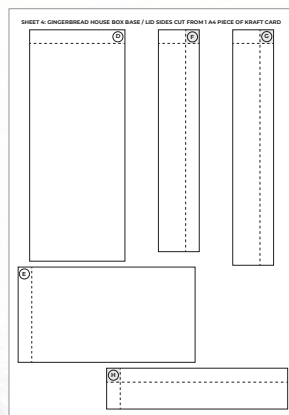
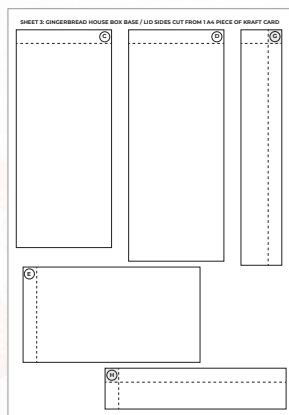
YOU WILL NEED:

- Craft Buddy Crystal Art Jolly Reindeer Stamp Set
- Circle, square and rectangle dies -I used the Craft Buddy Decorative Nested die sets
- Craft Buddy Premium glue
- Either spare Crystal Art crystals or 3mm gems
- Craft Buddy Gem Pens
- Craft Buddy Stamping Card
- Memento Tuxedo Black ink pad
- Clear Acetate
- Foam tape
- Craft Buddy mini rice lights
- Red liner tape



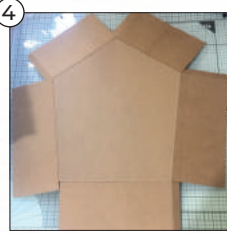
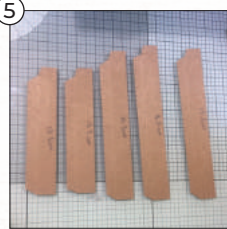
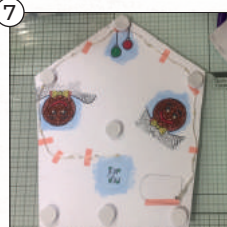
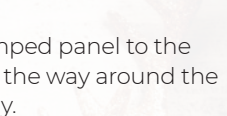
TEMPLATES:



Printing note: These A4 templates require borderless printing. Choose 'actual size' on print settings.



INSTRUCTIONS

1. Cut out the lid using the box lid template provided (A). Use small shape dies or a craft knife to cut windows where marked. Using the coordinating decorative frames die cut matching window and door frames and the ornate trim for the roof, then glue in place. 
2. Stamp out your chosen decoration onto white stamping card and colour. Cut these pieces out, glue in place onto your house lid and then attach crystals using the fine tip on the glue. Add extra detail around the door, window and roof using white crystals to look like icing. 
3. Now cut out the box base using the box base template (B) ensuring that you leave a 1cm glue flap attached to each side. 
4. Create the sides for the box base by cutting panels (1x 16cm by 7cm (C), 2x 17cm by 7cm (D) and 2x 13cm by 7cm (E)). Score at 1cm at one end of each panel to create glue flaps. Glue these panels to the lid base using the glue flaps then join the panels to make the completed box base. 
5. Now cut five more kraft card panels (Fx1, Gx2, Hx2). These will form the lid so need to be 3mm longer than the side panels so that the lid will fit. Each panel needs to be 3cm wide. Score at 1cm along the long edge and then again at 1cm at one end of each panel. Snip out the corner as shown to create the glue flaps. 
6. Place the box base onto the back of the box lid, make sure the base is central then draw a pencil line carefully around it. Glue the lid panels you have made to the lid using the pencil outline as your guide. 
7. Using the base template as a guide cut a piece of stamping card and a piece of Kraft card approximately 1cm smaller than the original base template. Lay the lid piece on top and draw faint outlines where the windows are so you can see where to stamp characters. Colour these and add crystals. Glue the Kraft card panel to the back of the white stamped piece. (if you wish to add rice lights you will need to do this now)
8. Use acetate to create windowpanes then attach the stamped panel to the inside of the lid using foam pads. Ensure there is a gap all the way around the inside of the lid so that it will fit onto the box base correctly.