



snow peak  
outdoor lifestyle creator since 1958

GS-100 R

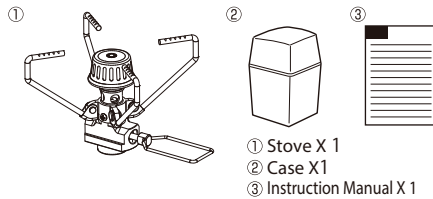
## GIGA POWER STOVE, MANUAL

### INSTRUCTION MANUAL VER. 1.00

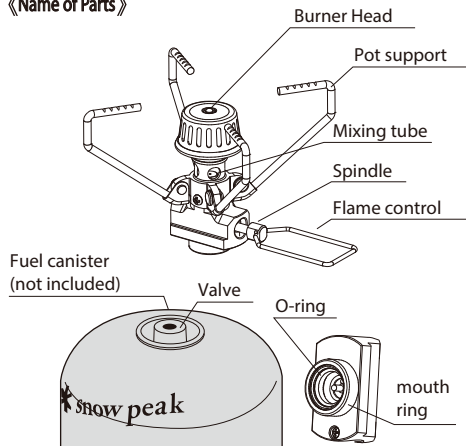
Thank you very much for purchasing this Snow Peak product. This product is a direct-mount stove that was developed for outdoor use only.

Before using this product, be sure to read these instructions carefully and use the product correctly and safely. After reading these instructions, keep them in a safe place where they can be referred to at any time. If you find anything in the instruction manual that is difficult to understand, please make sure to contact Snow Peak before use of product.

#### 《CONTENTS INCLUDE》



#### 《Name of Parts》



All combustion appliances created by Snow Peak are required to pass thorough burning tests before shipment. Therefore, please understand that there may be a slight tarnish on the pot support and burner heads.

#### SPECIFICATIONS

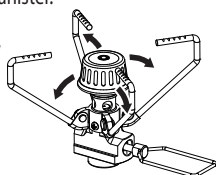
Product Name	Canister Stove(Direct Mount Type)	
Model	GS-100R	
Material	Stove/stainless steel, steel, brass, aluminum Case/polyethylene	
External Dimensions	During use	φ4.2 x H 2.7 in.
	Stowed	W 1.7 x D 1.4 x H 3.2 in.
Weight	2.6 oz (75g)	Diameter of usable pots- up to 14 cm (5.5inches), (No Dutch ovens) weight up to 2.0 liters
Gas Consumption	7.4oz/h	
Heat Output	10,000 BTU	
Compatible fuel canisters	Please use Snow Peak designated fuel canister only.	
Country of origin	MADE IN KOREA	

- Gas consumption and heat output were measured and calculated in accordance with in-house testing methods.
- Use the Snow Peak gas canisters as shown on the above table.
- The gas pressure may change depending on the air temperature and the temperature of the fuel canister, which may cause the combustion state (the condition and power of the flame) to change.

#### SET UP AND USE

When assembling, please choose a flat surface and do not attach to a dirty or dusty fuel canister.

1. Open the pot support completely as shown in the picture.

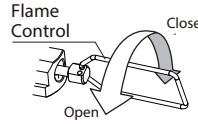


#### FUEL CANISTER MOUNTING

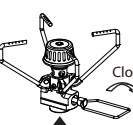
**WARNING:** Please use this stove with only Snow Peak designated fuel canisters.



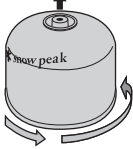
1. Turn the flame control clockwise to completely shut off the gas feed.



2. Have the fuel canister connector face up and attach to fuel canister joint.



**CAUTION:** Have the fuel canister in an up-right (connector face up) position when installing.



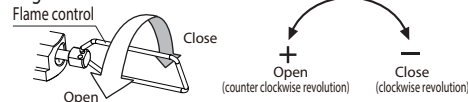
Slowly turn fuel canister in a counter clockwise motion, making sure that the canister is tightening.

**WARNING:** When installing and removing canister, there will be some gas that escapes. Only install or remove canister in a well ventilated area, as there is a chance of fire.

#### OPERATION

##### 1. Lighting the stove

Light a lighter or match beforehand and slowly turn flame control counter clockwise (left) when looking directly at the control. If using the igniter, turn flame control first, and then push the ignition button. If the unit does not light, turn off the gas once before trying again.



**WARNING:** When lighting, make sure that the surrounding area is free of materials that can easily burn.

##### 2. Changing the flame power.

When the flame control is rotated counter clockwise (turn left) the flame becomes larger. When it is rotated clockwise (turn right), the flame becomes smaller. Turn flame control slowly.

##### 3. Extinguishing the flame.

Slowly turn the flame control valve clockwise (turn right) until it stops. Make sure that the flame is completely extinguished. When changing fuel canisters, make sure that the stove has sufficiently cooled off.

##### 4. Removing the fuel canister.

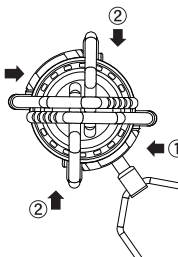
- A) After use, the stove will be hot. Only remove canister after stove has cooled.
- B) Hold the canister and the stove in an upright position. When looking at the fuel canister from the bottom, turn the canister counter clockwise to remove.

**WARNING:** Always store fuel canister with cap on the connector.

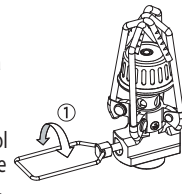
#### STORING THE STOVE

##### Folding the pot support.

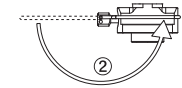
1. First, fold two opposite pot supports inward until they touch the burner head.
2. Then fold remaining two pot supports underneath the first 2 folded pot supports.



1. Folding the flame control  
Turn the flame control in a horizontal position.



2. Then fold the flame control downward underneath the lower portion of the stove.



#### MAINTAINANCE

1. Check the fuel canister joint O-ring (interchangeable) each time before use. If there is any damage or wear, stop use and contact dealer or Snow Peak customer service.
2. This stove is made of aluminum which may rust if stored improperly.

**CAUTION:** Never spray water on the burner head. Rust may occur internally, and it may lead to abnormal combustion.

#### TROUBLE SHOOTING

Symptom	Cause	Solution
Gas leakage	Improper mounting of fuel canister.	Make sure the fuel canister is mounted correctly.
	The fuel canister joint O-ring is damaged. Gas is leaking from other than the fuel canister.	Stop using immediately.
Stove does not ignite	Clogged burner head.	Clean the burner head to remove the clogging.
Low heat output	Low fuel level in canister.	Replace the fuel canister with a new one.
Uneven flame	Clogged burner head.	Clean the burner head to remove the clogging.
Flame extinguishes during operation	Low remaining fuel Clogged burner head	Replace the fuel canister with a new one. Clean the burner head to remove the clogging.
Flame does not extinguish	Flame control is not closed completely.	Turn flame control clockwise until it stops.
Red flame	Water or food boiled over is remaining on burner head.	Clean the burner head to remove extraneous matter. The red flame around pot supports is a flame reaction by material of pot support.
Discoloration of burner head and pot supports	Normal wear	Discoloration is caused by combustion and this is not a malfunction.

- Please check through the above symptoms and causes, and if malfunction persist or the cause is not clear, contact the retailer where you purchased the product or Snow Peak Customer Service.
- In case the flame does not extinguish, make sure it is in a safe location and allow it to burn until the gas is used up.

#### WARRANTY

Snow Peak guarantees its products against manufacturer defects. We have made every effort to ensure our products are free from any defect or flaws. In the rare event that you feel this product has a defect or needs repair please contact Snow Peak customer service or go to your local Snow Peak dealer where you purchased this product. Snow Peak will not be able to replace this product in any damages occurred due to any of the following:

1. Material quality has changed due to aging of product.
2. Damage by altering or careless handling.
3. Damaged due to improper handling which is prohibited as shown in instructions.
4. Products failure due to user accidents.
5. Any damage except with product defect due to manufacturing.
6. Damage by dirt and rust.
7. Damage by dismantling.
8. Deformation and failure of parts damaged by dropping or other similar incidents.
9. Product failure due to wear and tear by user.
10. Damage caused by improper use with other products.

Snow Peak Inc. A Corporation of Japan

410 NW 14th Ave., Portland Oregon, 97209, USA  
Tel. +1 503-697-3330 Fax. +1 503-699-1396  
[www.snowpeak.com](http://www.snowpeak.com)