

artos[®]

F901-20

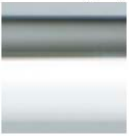
TECHNICAL SPECIFICATIONS

trova shower head, square

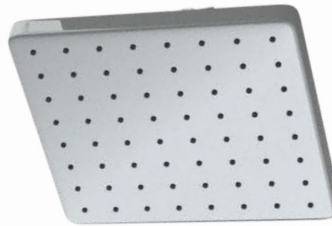
BRUSHED NICKEL(BN)



CHROME(CH)



BLACK(BK)

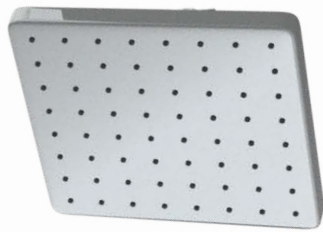


artos[®]

F901-20

PRODUCT DIMENSIONS

trova shower head, square



OPERATING PRESSURE

Minimum: 15 psi

Maximum: 75 psi

Above 90psi it may be necessary to install a pressure reducer

OPERATING TEMPERATURE

Maximum: 176°

FLOW RATE

1.8 USGPM

APPROVALS



artos[®]

F901-20

PRODUCT DIMENSIONS

trova shower head, square

