

# JEWEL

59" x 71"

**FABRIC REQUIRED:** 1 - 5 Yard Fabric Pack from Wood Valley Designs,  
4 yards of 44" fabric for backing and twin size batting.

**NOTE:** Do Not Prewash Fabric.

## CUTTING INSTRUCTIONS:

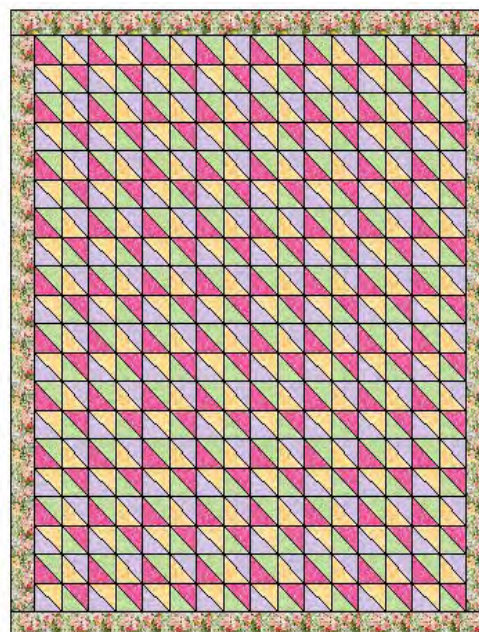
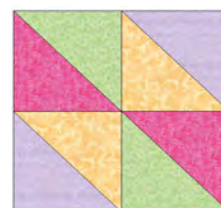
1. Choose 4 fabrics for your block. The 5th fabric will be your border. Cut 4 fabrics into 8 - 4" strips. Cut strips into 4" squares for 40 squares. Cut squares in 1/2 diagonally to make 80 triangles.
2. Cut 5th fabric into 7 - 5" strips for border. ( NOTE: Use the other 4 fabrics for 2" binding. If you want the binding to match the border, cut border strips 3 1/2" instead of 5".)

## QUILT ASSEMBLY:

1. Sew triangles together to make 2 block combinations. Press and trim dog ears!
2. Sew 4 squares together to make block. Make 80 blocks. Note the placement of squares. Press.
3. Layout blocks in 8 x 10 placement.
4. Sew blocks into rows. Sew rows together and press.
5. Measure sides of quilt and piece border strips to that measurement and sew onto the sides. Repeat this step for the top and bottom. Press.

6. Quilt as desired and bind quilt!

**NOTE:** Use monochromatic colors for a faceted jewel!



Wood Valley Designs  
226 Pam Road  
Indianapolis, IN 46280  
[www.woodvalleydesigns.com](http://www.woodvalleydesigns.com)

Pattern Designed by Pineapple Press Patterns.  
2620 Friday Road, Coloma, MI 49038  
c2008 Pineapple Press Patterns.  
All Rights Reserved.