

Spray Booths

The Pro-V and Pro-X are the most intelligent, economical and environmentally sound choices for spraying virtually anything. Whether installed in studios, classrooms, production potteries or silk-screening operations, the Pro-V and Pro-X provide quality construction, total material recovery and fast, easy clean-up.



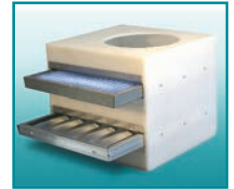
Pro-V — Free Standing

47" x 39" opening is ideal for large work and multiple-booth, conveyor operations.

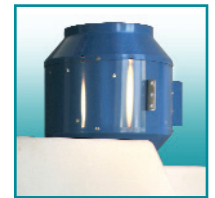


Pro-X — Bench Top

Streamlined 31" design fits through most standard doorways.



Optional Air Scrubber reduces exhaust emissions



Exhaust systems are available for both the Pro-V and Pro-X.

Pro-V and Pro-X Features:

- Uni-cast polyethylene construction
 - UV-inhibited
 - Virtually indestructible
 - Won't discolor
 - Translucency creates brighter workspace
- Super slippery surface and built-in drain make for easy clean-up and environmentally friendly recycling
- Legs are sturdy, rust-free stainless steel
- Easily modified to accommodate multiple-booth conveyor operations for tile and other production line use (Pro-V only)

Pro-V and Pro-X Accessories:

- Stainless steel work shelf
- Reusable filters of Styrofoam or long-lasting aluminum (Pro-X requires one filter; Pro-V requires set of 2)
- Commercial exhaust system pulls over-spray into the booth and out of your studio. While systems are offered that fit most typical spray booth installations, you should discuss your individual requirements with a local HVAC contractor
- Painted steel stand, 30" standard height; custom heights available (Pro-X only)
- Air scrubber benefits air quality by reducing exhaust emission
- Other accessories such as banding/decorating wheels, spray guns, pumps, regulators, hoses, etc. are all available



	EXTERIOR DIMENSIONS			WORK SPACE DIMENSIONS		
	Width	Depth	Height w/legs	Width	Depth	Height
Pro-V	48.25"	50.25"	74.25"	47"	34"	39"
Pro-X	30.75"	34"	47.5"	27.5"	30"	34.5"

(800) 4-LAGUNA (452-4862) • info@lagunaclay.com • distributors@lagunaclay.com