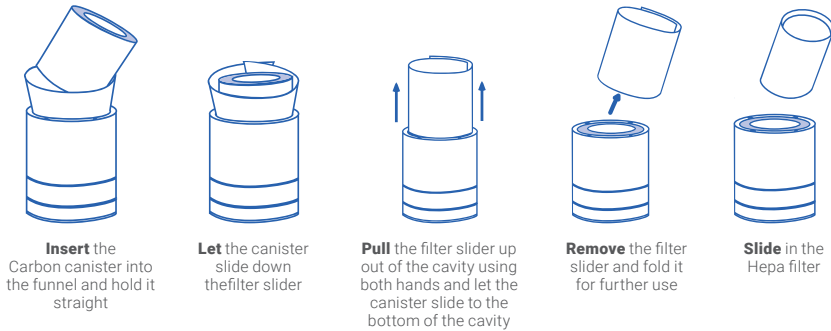
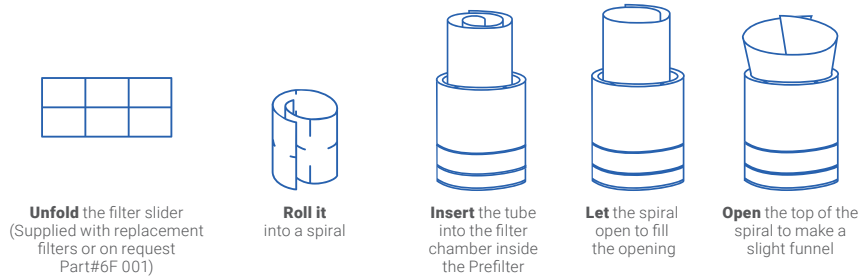
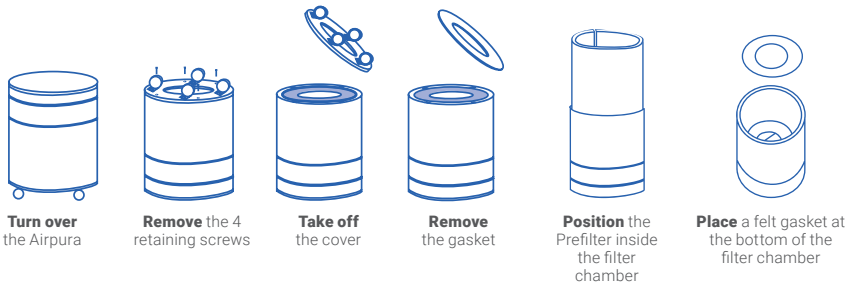
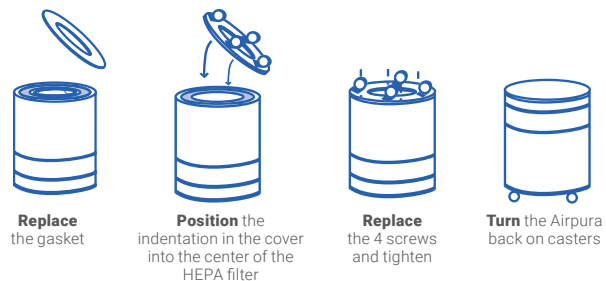


## To open the filter chamber



## To close the filter chamber



**Airpura**   
AIR PURIFIERS

# UV825

OPERATING  
&  
FILTER REPLACEMENT  
DIRECTIONS

# TO BEGIN USING YOUR AIRPURA

**Inspect the exterior of your Airpura** to verify there is no damage from shipping. If any damage is noted, please follow the instructions from the distributor returns policy.

**Wipe the unit** with a damp cloth to remove any dust from packaging

**Plug the unit** into a regular grounded 110 volt outlet

**Turn on the unit** to MAX and allow it to run for at least 30 minutes

**Set the variable speed** control to the level you wish

The most efficient way to use your Airpura for regular air quality maintenance is to run it at a low speed **24 hours a day 7 days a week.**

**Always maintain a humidity level of 40% or less in your home to ensure the unit is operating at optimal levels. Overly humid conditions can have an adverse effect on the performance of the carbon. When using purifier with a dehumidifier, please keep dehumidifier at least 6 feet away.**



## FILTER MAINTENANCE AND REPLACEMENT

### The Prefilter

Can be vacuumed from the exterior of the unit once a month or more often. Should be replaced at least after 12 months of use

### To vacuum the Prefilter

Use the brush attachment on your vacuum cleaner. Vacuum slowly around the mesh surface of the filter chamber

## IMPORTANT SAFETY NOTE

Please ensure air purifier is turned OFF when plugging into a power source. Failure to do so may result in motor potentially stalling and/or burning.

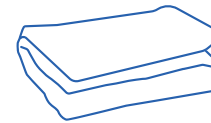
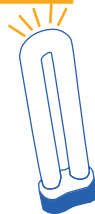
## Replacing the UV bulb

**Open** the filter chamber following the instructions

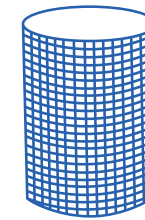
**Push** the replacement bulb firmly into the connector

**Pull** the bulb upward out of the connector

**Close** the filter chamber following instructions



**Poly Prefilter 600 2-pack**  
3-6 months

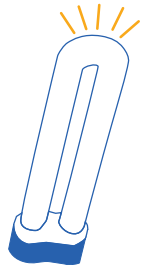


**HEPA 600RVHU Filter**  
(99.97% efficient @ 0.3 Microns)  
3 to 5 years



**18 lbs Coconut Shell Carbon Filter (100% blend)**  
24 months

**UV614: HEPA 14 Filter**  
(99.99% efficient @ 0.3 Microns)



**UV bulb**  
18-20 months

## Technical specifications

**Tobacco smoke odor, and chemical control**  
18 lbs activated Carbon  
13"H x 13.25"OD x 7.5"ID

**Size**  
23 in x 15 in

**Carbon bed**  
2" deep

**Weight**  
45 lbs total

**Particle removal**  
40 sq ft true HEPA  
(Measured 1 side only)  
12 pleats per inch  
Pleats warm rolled with separators

**Watts**  
120 on high / 40 on low

**Air Flow (free flow) 635 cfm**

**Sound Level**  
30.2 db on low (at 6 feet)  
63.0db on high (635 cfm)

**Housing**  
Powder coat steel



## Air purifiers models and filter configurations

	Prefilter	Particulate	Carbon
<b>Alternates</b>	Cotton Prefilter TarBarrier Prefilter		
<b>Upgrade</b>		HEPA 14 Filter (99.99% efficient @ 0.3 Microns) HEPA 14 Filter (99.99% efficient @ 0.3 Microns) + TiO2	26 lbs Impregnated Carbon Filter (35/65% Blend : KI/ Potassium Iodide, Coconut Shell Carbon)

EPA Est. No.: 100723-CAN-1

5510 des Rossignols,, Laval, QC, Canada, H7L 5W6