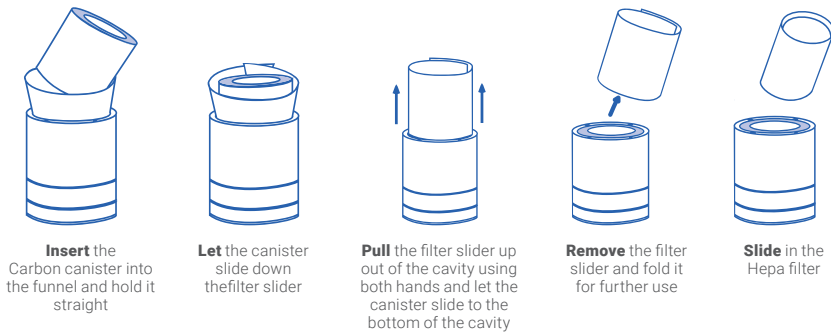
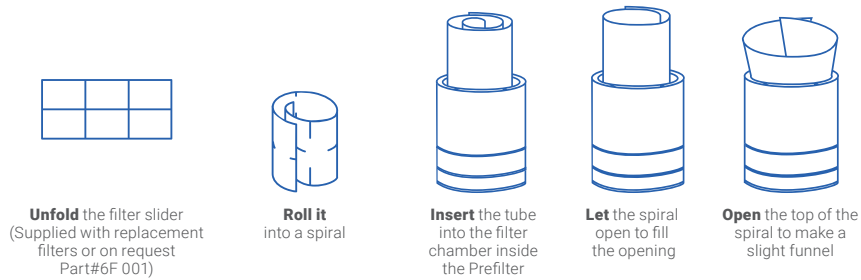
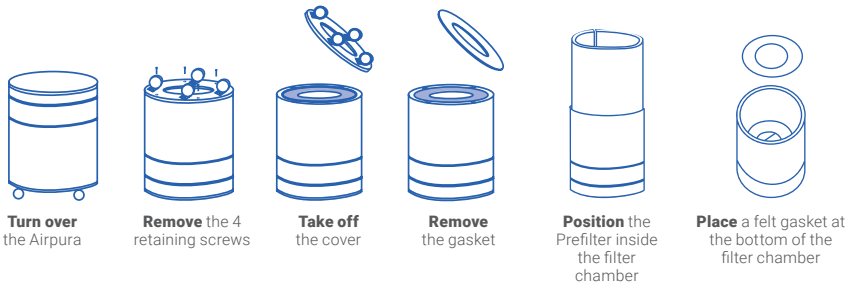
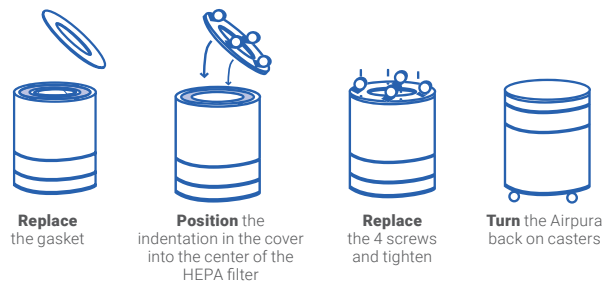


## To open the filter chamber



## To close the filter chamber



**Airpura**   
AIR PURIFIERS

# UV700

OPERATING  
&  
FILTER REPLACEMENT  
DIRECTIONS

# TO BEGIN USING YOUR AIRPURA

**Inspect the exterior of your Airpura** to verify there is no damage from shipping. If any damage is noted, please follow the instructions from the distributor returns policy.

**Wipe the unit** with a damp cloth to remove any dust from packaging

**1. Plug the unit** into a regular grounded 110 volt outlet

**Turn on the unit** to MAX and allow it to run for at least 30 minutes

**Set the variable speed** control to the level you wish

The most efficient way to use your Airpura for regular air quality maintenance is to run it at a low speed **24 hours a day 7 days a week.**

**Always maintain a humidity level of approximately 40% to ensure the unit is operating at optimal levels. When using purifier with a dehumidifier, please keep dehumidifier at least 6 feet away. It is recommended to run your purifier at low speeds, 24 hours a day, 7 days a week. Running it at a low speed allows for maximum dwell time of chemicals and VOCs in the air through both the carbon and HEPA filters thus delivering superior filtration.**



## FILTER MAINTENANCE AND REPLACEMENT

### The Prefilter

Can be vacuumed from the exterior of the unit once a month or more often. Should be replaced at least after 12 months of use

### To vacuum the Prefilter

Use the brush attachment on your vacuum cleaner. Vacuum slowly around the mesh surface of the filter chamber

## IMPORTANT SAFETY NOTE

Please ensure air purifier is turned OFF when plugging into a power source. Failure to do so may result in motor potentially stalling and/or burning.

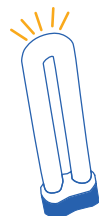
## Replacing the UV bulb

**Open** the filter chamber following the instructions

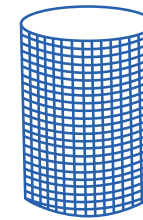
**Pull** the bulb upward out of the connector

**Push** the replacement bulb firmly into the connector

**Close** the filter chamber following instructions



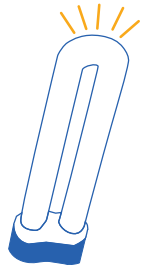
**Poly Prefilter 600 2-pack**  
12 months



**HEPA 600RVHU Filter**  
(99.97% efficient @ 0.3 Microns)  
3 to 5 years



**18 lbs Coconut Shell Carbon Filter (100% blend)**  
24 months



**UV bulb**  
18-20 months

## Technical specifications

**Tobacco smoke odor, and chemical control**  
18 lbs activated Carbon  
13"H x 13.25"OD x 7.5"ID

**Carbon bed**  
2" deep

**Particle removal**  
40 sq ft true HEPA  
(Measured 1 side only)  
12 pleats per inch  
Pleats warm rolled with separators

**Air Flow 635 cfm**  
More cfm than any other home unit available

**Housing**  
Powder coat steel

**Size**  
23 in x 15 in

**Weight**  
45 lbs total

**Watts**  
120 on high / 40 on low

**Sound Level**  
30.2\* db on low (at 6 feet)  
63.0 db on high (635 cfm)  
\*at test conditions



Airpura Industries - 5510 Boul. des Rossignols, Laval, QC, Canada.  
H7L 5W6  
EPA Est.:100723-CAN-1