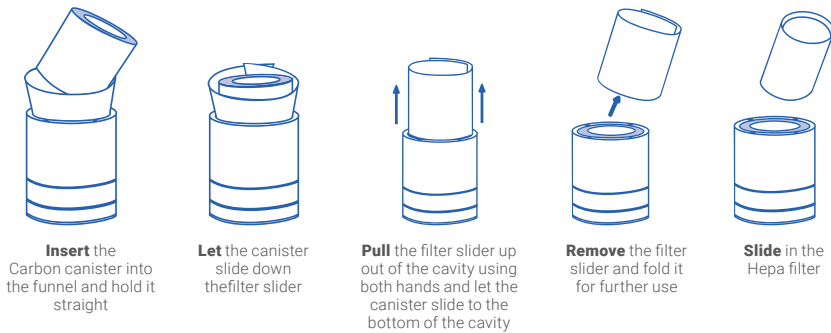
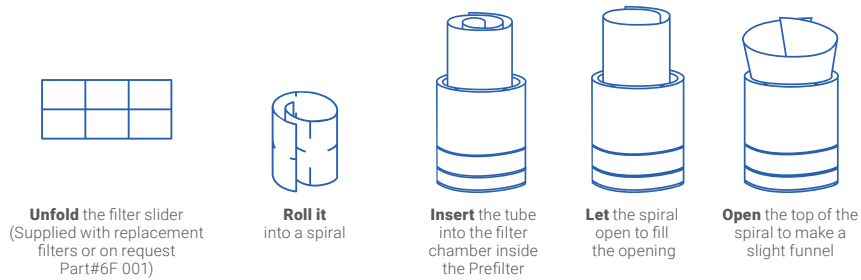
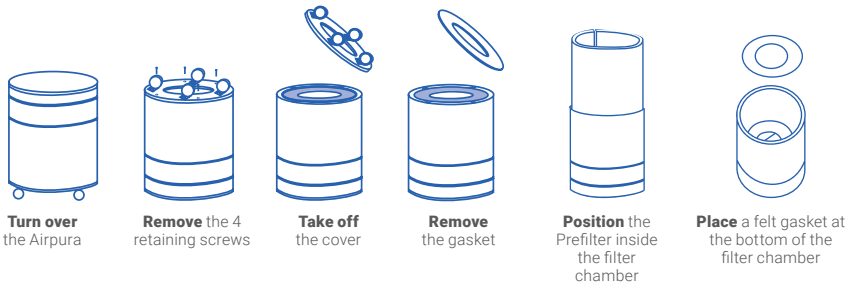
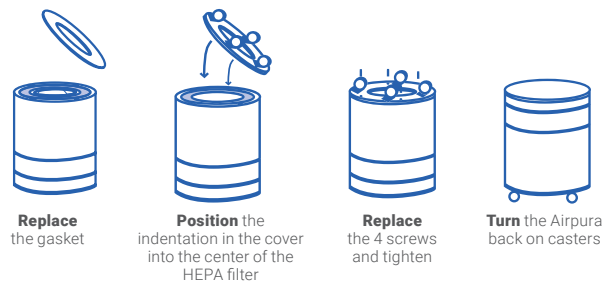


To open the filter chamber



To close the filter chamber



Airpura 
AIR PURIFIERS

UV614

OPERATING
&
FILTER REPLACEMENT
DIRECTIONS

TO BEGIN USING YOUR AIRPURA

Inspect the exterior of your Airpura to verify there is no damage from shipping. If any damage is noted, please follow the instructions from the distributor returns policy.

Wipe the unit with a damp cloth to remove any dust from packaging

Plug the unit into a regular grounded 110 volt outlet

Turn on the unit to MAX and allow it to run for at least 30 minutes

Set the variable speed control to the level you wish

The most efficient way to use your Airpura for regular air quality maintenance is to run it at a low speed **24 hours a day 7 days a week.**

Always maintain a humidity level of 35% or less in your home to ensure the unit is operating at optimal levels. Overly humid conditions can have an adverse effect on the performance of the carbon. When using purifier with a dehumidifier, please keep dehumidifier at least 6 feet away.



FILTER MAINTENANCE AND REPLACEMENT

The Prefilter

Can be vacuumed from the exterior of the unit once a month or more often. Should be replaced at least after 12 months of use

To vacuum the Prefilter

Use the brush attachment on your vacuum cleaner
Vacuum slowly around the mesh surface of the filter chamber

IMPORTANT SAFETY NOTE

Please ensure air purifier is turned OFF when plugging into a power source. Failure to do so may result in motor potentially stalling and/or burning.

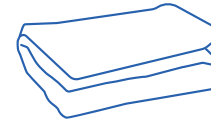
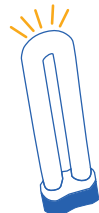
Replacing the UV bulb

Open the filter chamber following the instructions

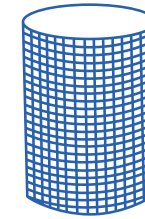
Pull the bulb upward out of the connector

Push the replacement bulb firmly into the connector

Close the filter chamber following instructions



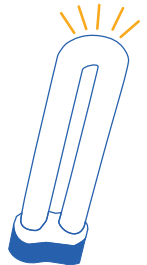
Poly Prefilter C600 2pk
3-6 months



HEPA 14 Filter
(99.99% efficient @ 0.3 Microns)
3 to 5 years



18 lbs Coconut Shell Carbon Filter (100% blend)
24 months



UV bulb
18-20 months

Technical specifications

Tobacco smoke odor, and chemical control
18 lbs activated Carbon
13"H x 13.25"OD x 7.5"ID

Carbon bed
2" deep

Particle removal
40 sq ft true HEPA
(Measured 1 side only)
12 pleats per inch
Pleats warm rolled with separators

Air Flow 560 cfm
More cfm than any other home unit available

Housing
Powder coat steel

Size
23 in x 15 in

Weight
45 lbs total

Watts
120 on high / 40 on low

Sound Level
28.1 db on low (at 6 feet)
62.3 db on high (560 cfm)
(Room level 25.1 db)

ETL Certified
Conforms to CSA C22.2
no 113 ANSI / UL 507



Air purifiers models and filter configurations

	Prefilter	Particulate	Carbon
Alternates	Cotton Prefilter TarBarrier Prefilter		
Upgrade		HEPA 14 Filter (99.99% efficient @ 0.3 Microns) + TiO2	26 lbs Impregnated Carbon Filter (35/65% Blend : KI/ Potassium Iodide, Coconut Shell Carbon)