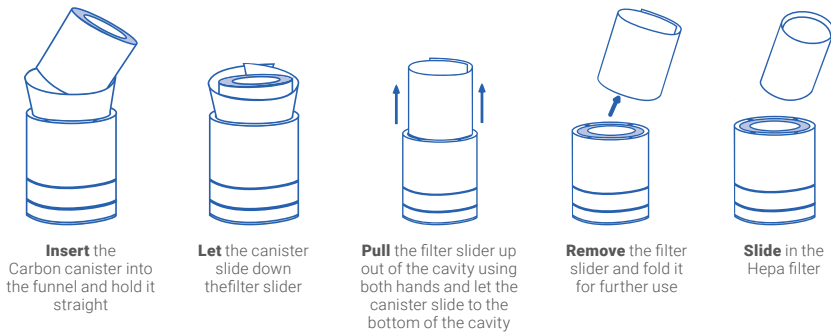
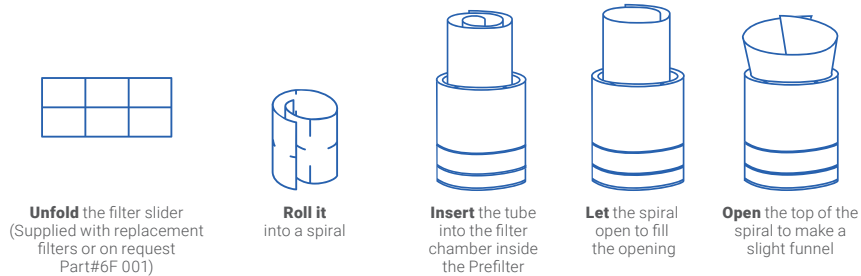
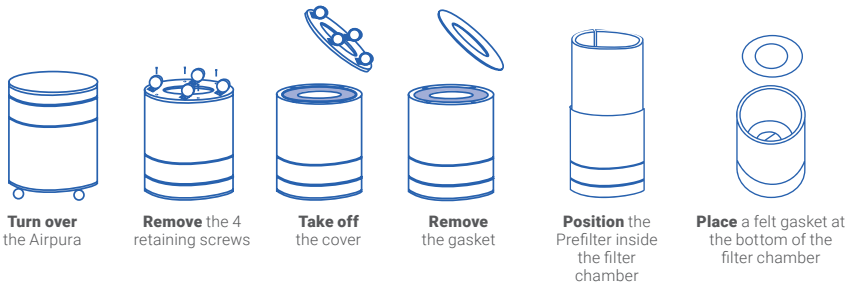
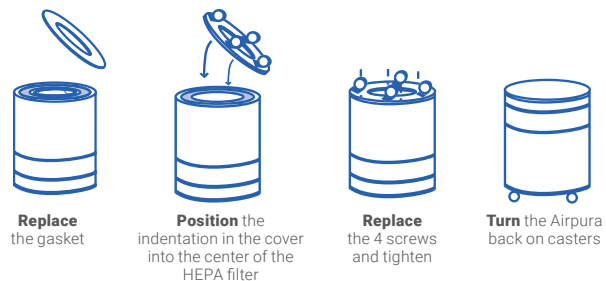


## To open the filter chamber



## To close the filter chamber



**Airpura**   
AIR PURIFIERS

# P700+

OPERATING  
&  
FILTER REPLACEMENT  
DIRECTIONS

# TO BEGIN USING YOUR AIRPURA

**Inspect the exterior of your Airpura** to verify there is no damage from shipping. If any damage is noted, please follow the instructions from the distributor returns policy.

**Wipe the unit** with a damp cloth to remove any dust from packaging

**Plug the unit** into a regular grounded 110 volt outlet

**Turn on the unit** to MAX and allow it to run for at least 30 minutes

**Set the variable speed** control to the level you wish

**Always maintain a humidity level of 40% in your home to ensure the unit is operating at optimal levels. When using purifier with a**

**dehumidifier, please keep dehumidifier at least 6 feet away. It is recommended to run your purifier at low speeds, 24 hours a day, 7 days a week. Running it at a low speed allows for maximum dwell time of chemicals and VOCs in the air through both the carbon and HEPA filters thus delivering superior filtration.**



## FILTER MAINTENANCE AND REPLACEMENT

### The Prefilter

Can be vacuumed from the exterior of the unit once a month or more often. Should be replaced at least after 12 months of use

### To vacuum the Prefilter

Use the brush attachment on your vacuum cleaner. Vacuum slowly around the mesh surface of the filter chamber

## IMPORTANT SAFETY NOTE

Please ensure air purifier is turned OFF when plugging into a power source. Failure to do so may result in motor potentially stalling and/or burning.

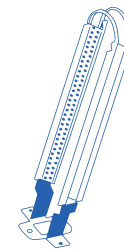
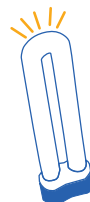
## Replacing the UV bulb

**Open** the filter chamber following the instructions

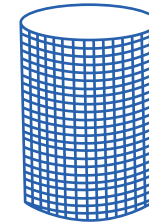
**Push** the replacement bulb firmly into the connector

**Pull** the bulb upward out of the connector

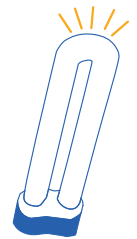
**Close** the filter chamber following instructions



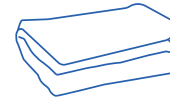
**TitanClean**  
18-20 months



**HEPA 600RVHU Filter**  
(99.97% efficient @ 0.3 Microns)+TiO2  
3 to 5 years



**UV bulb**  
18-20 months



**Poly Prefilter 600 2-pack**  
12 months



**+ 18 lbs, Coconut Shell Carbon Filter (100% Blend)**  
24 months

## Technical specifications

### Particle removal

Over 100 ft<sup>2</sup> true HEPA  
(Measured only 1 side)  
12 pleats per inch  
Pleats warm rolled with separators

### Activated carbon filter

18 lbs carbon filter  
13"H X 13.25"OD X 9"ID

### Carbon Bed

2" deep X 570 sq. surface

### Air Flow 635 cfm

More cfm than any other home unit available

### Prefilter

570 in<sup>2</sup> x 1 in

### Housing

Powder coat steel

### Size

23 in x 15 in

### Weight

35 lbs total

### Watts

120 on high / 40 on low

### Sound Level

30.2\* db on low (at 6 feet)  
63.0 db on high (635 cfm)  
\*at test conditions

### Voltage options

115 or 220 volts



## Air purifiers models and filter configurations

|                   | Prefilter                                | Particulate   | Carbon  |
|-------------------|--|---|---|
| <b>Alternates</b> | Cotton Prefilter<br>TarBarrier Prefilter |   | 18 lbs anthracite carbon filter (100%)  |
| <b>Upgrade</b>    |  | HEPA 14 Filter (99.99% efficient @ 0.3 Microns)<br>ULPA Filter (99.9999% efficient @ 0.1 Microns) | 18 lbs impregnated carbon<br>18 lbs carbon (17% potassium permanganate carbon, 83% coconut shell) |

Airpura Industries - 5510 Boul. des Rossignols, Laval, QC, Canada. H7L 5W6

EPA Est.:100723-CAN-1