

To open the filter chamber



Turn over
the Airpura



Remove the 4
retaining screws



Take off
the cover



Remove
the gasket



Position the
Prefilter inside
the filter
chamber



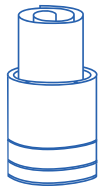
Place a felt gasket at
the bottom of the
filter chamber



Unfold the filter slider
(Supplied with replacement
filters or on request
Part#6F 001)



Roll it
into a spiral



Insert the tube
into the filter
chamber inside
the Prefilter



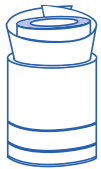
Let the spiral
open to fill
the opening



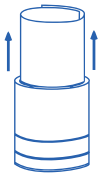
Open the top of the
spiral to make a
slight funnel



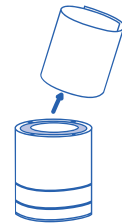
Insert the
Carbon canister into
the funnel and hold it
straight



Let the canister
slide down
the filter slider



Pull the filter slider up
out of the cavity using
both hands and let the
canister slide to the
bottom of the cavity



Remove the filter
slider and fold it
for further use



Slide in the
Hepa filter

To close the filter chamber



Replace
the gasket



Position the
indentation in the cover
into the center of the
HEPA filter



Replace
the 4 screws
and tighten



Turn the Airpura
back on casters

Airpura 
AIR PURIFIERS

1600

OPERATING
&
FILTER REPLACEMENT
DIRECTIONS

TO BEGIN USING YOUR AIRPURA

Inspect the exterior of your Airpura to verify there is no damage from shipping. If any damage is noted, please follow the instructions from the distributor returns policy.

Wipe the unit with a damp cloth to remove any dust from packaging

Plug the unit into a regular grounded 110 volt outlet

It is recommended to set purifier on medium to high speed and allow to run for 48 hours before operating

Set the variable speed control to the level you wish

The most efficient way to use your Airpura for regular air quality maintenance is to run it at a low speed **24 hours a day 7 days a week.**

Always maintain a humidity level of 40% or less in your home to ensure the unit is operating at optimal levels. Overly humid conditions can have an adverse effect on the performance of the carbon. When using purifier with a dehumidifier, please keep dehumidifier at least 6 feet away.



FILTER MAINTENANCE AND REPLACEMENT

The Prefilter

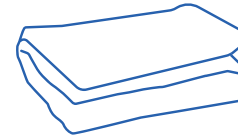
Can be vacuumed from the exterior of the unit once a month or more often. Should be replaced at least after 12 months of use

To vacuum the Prefilter

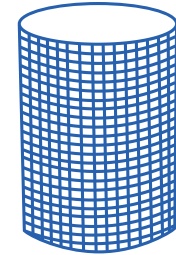
Use the brush attachment on your vacuum cleaner
Vacuum slowly around the mesh surface of the filter chamber

IMPORTANT SAFETY NOTE

Please ensure air purifier is turned OFF when plugging into a power source. Failure to do so may result in motor potentially stalling and/or burning.



Poly Prefilter 600 2-pack
12 months



HEPA Filter (99.97% efficient @ 0.3 Microns), 3 inch, 100 sq. ft.
4 to 7 years

1600+: HEPA Filter w/ Metal End-Cap (99.97% efficient @ 0.3 Microns), 3 inch, 100 sq. ft.

Technical specifications

Particle removal

Over 100 ft² true HEPA
(Measured only 1 side)
7-12 pleats per inch
Pleats warm rolled with separators

Air Flow 560 cfm

More cfm than any other home unit available

Prefilter

570 in² x 1 in

Housing

Powder coat steel

Size

23 in x 15 in

Weight

35 lbs total

Watts

120 on high / 40 on low

Sound Level at 6 feet

34.2 db on low
57.2 db on high
(Room level 25.1 db)

Voltage options

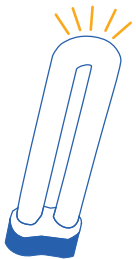
115 or 220 volts

ETL Certified

Conforms to CSA C22.2
no 113 ANSI / UL 507

Possible upgrade :

UV Germicidal Lamp, 20 Watts



Air purifiers models and filter configurations

	Prefilter	Particle	Carbon
Alternates	Cotton Prefilter TarBarrier Prefilter		Hi-C Carbon
Upgrade		HEPA 14 Filter (99.99% efficient @ 0.3 Microns) ULPA Filter (99.9999% efficient @ 0.1 Microns)	