

## To open the filter chamber



**Turn over**  
the Airpura



**Remove** the 4  
retaining screws



**Take off**  
the cover



**Remove**  
the gasket



**Position** the  
Prefilter inside  
the filter  
chamber



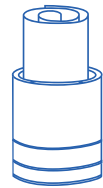
**Place** a felt gasket at  
the bottom of the  
filter chamber



**Unfold** the filter slider  
(Supplied with replacement  
filters or on request  
Part#6F 001)



**Roll it**  
into a spiral



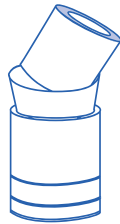
**Insert** the tube  
into the filter  
chamber inside  
the Prefilter



**Let** the spiral  
open to fill  
the opening



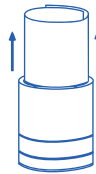
**Open** the top of the  
spiral to make a  
slight funnel



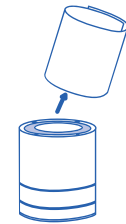
**Insert** the  
Carbon canister into  
the funnel and hold it  
straight



**Let** the canister  
slide down  
the filter slider



**Pull** the filter slider up  
out of the cavity using  
both hands and let the  
canister slide to the  
bottom of the cavity



**Remove** the filter  
slider and fold it  
for further use



**Slide** in the  
Hepa filter

**Airpura**   
*AIR PURIFIERS*

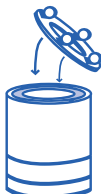
# C700

OPERATING  
&  
FILTER REPLACEMENT  
DIRECTIONS

## To close the filter chamber



**Replace**  
the gasket



**Position** the  
indentation in the cover  
into the center of the  
HEPA filter



**Replace**  
the 4 screws  
and tighten



**Turn** the Airpura  
back on casters

# TO BEGIN USING YOUR AIRPURA

**Inspect the exterior of your Airpura** to verify there is no damage from shipping. If any damage is noted, please follow the instructions from the distributor returns policy.

**Wipe the unit** with a damp cloth to remove any dust from packaging

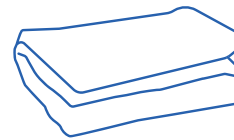
**Plug the unit** into a regular grounded 110 volt outlet

**Turn on the unit** to MAX and allow it to run for at least 30 minutes

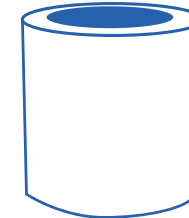
**Set the variable speed** control to the level you wish

The most efficient way to use your Airpura for regular air quality maintenance is to run it at a low speed **24 hours a day 7 days a week.**

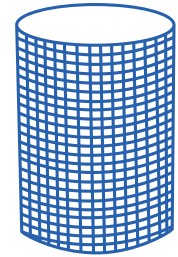
**Always maintain a humidity level of approximately 40% to ensure the unit is operating at optimal levels. When using purifier with a dehumidifier, please keep dehumidifier at least 6 feet away.**



**Poly Prefilter 600 2-pack**  
12 months



**26 lbs Coconut Shell Carbon filter C600**  
24 months



**HepaBarrier 600CT Filter (95% efficient @ 1 Microns)**  
12-16 months

## Technical specifications

### Odors, airborne chemical control

26 lbs activated Carbon  
13"H in x 13.25"OD in x 7"ID

### Carbon Bed

3" deep

### Particle removal

HepaBarrier

### Air Flow 635 cfm

More cfm than any other home unit available

### Prefilter

570 in<sup>2</sup> x 1 in

### Housing

Powder coat steel

### Size

23 in x 15 in

### Weight

45 lbs total

### Watts

120 on high / 40 on low

### Sound Level

30.2\* db on low (at 6 feet)

63.0 db on high (635 cfm)

\*at test conditions



## FILTER MAINTENANCE AND REPLACEMENT

### The Prefilter

Can be vacuumed from the exterior of the unit once a month or more often. Should be replaced at least after 12 months of use

### To vacuum the Prefilter

Use the brush attachment on your vacuum cleaner  
Vacuum slowly around the mesh surface of the filter chamber

## IMPORTANT SAFETY NOTE

Please ensure air purifier is turned OFF when plugging into a power source. Failure to do so may result in motor potentially stalling and/or burning.

## Air purifiers models and filter configurations

	Prefilter	Carbon
<b>Alternates</b>	Cotton Prefilter TarBarrier Prefilter	26 lbs anthracite Carbon filter 100%
<b>Upgrade</b>		26 lbs impregnated Carbon filter 17% potassium iodide carbon, 83% coconut shell 26 lbs impregnated Carbon filter 35/65% blend