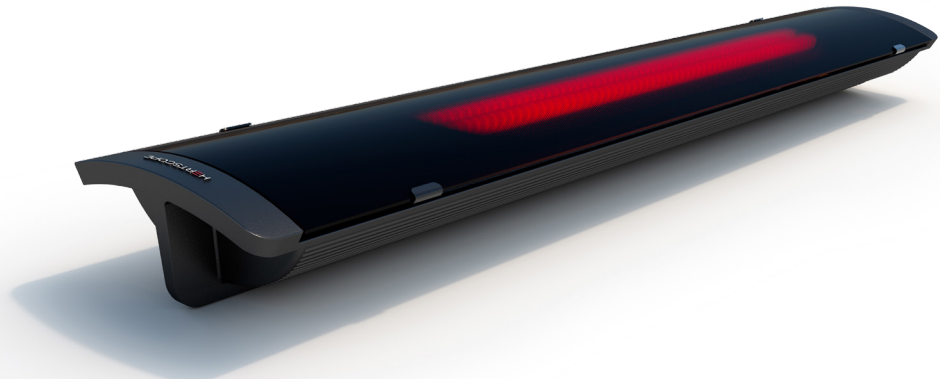
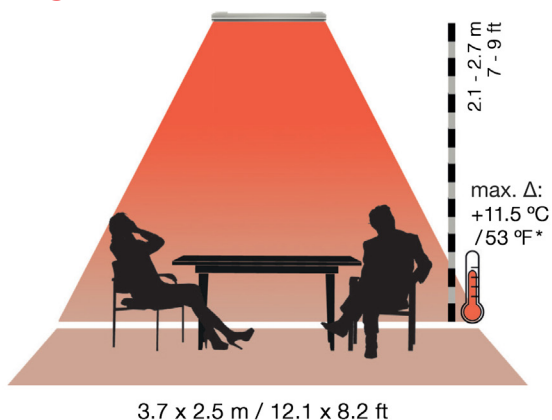


Pure 3000W specifications



	HEATSCOPE® Pure 3000W	
SKU	HTS.1.PUR.30.WH	HTS.1.PUR.30.BL
MPN	MHS-PE3000WT.200	MHS-PE3000AB.200
Colors	White	Black
Dimensions (L x W x H)	1044 x 166 x 87 mm / 41.1 x 6.5 x 3.4 in	
Weight (approx)	7.5kg / 16.5lbs	
Electrical Connection	220 - 240V AC~, 50/60 Hz, 13.91A	
Heat Output	3000W / 10,236 BTU/h	
IP Standard	IP65	
Full Heat	30 sec.	
Visible Light	< 300-400 Lumen	
Included Accessories	Bracket for wall or ceiling mounting, Dual WiFi Smart Switch (w/ App)	
Optional Accessories	Extension Rods	
Compatibility	ZigBee Wireless Switch (Remote Control), ZigBee Motion Sensor (extra parts required)	

Heating area



*Values are approximate. Maximum temperature increase achievable in enclosed spaces. The heating area and heat intensity can vary based on the mounting height (distance from floor to the front screen of the heater) and location (indoor x outdoor). Optimum height for wall installation: 2.1m - 2.3m. Optimum height for ceiling installation: up to 2.5m (outdoor) or 3m (indoor).

Disclaimer: All product specifications and data are subject to change without notice and believed to be correct at the time of publication. MAD Design Group (MDG), its affiliates, agents, and employees, and all persons acting on its or their behalf (collectively, "MAD Design Group"), disclaim any and all liability for any errors, inaccuracies or incompleteness contained herein or in any other disclosure relating to any product. MDG disclaims any and all liability arising out of the use or application of any product described herein or of any information provided herein to the maximum extent permitted by law. The product specifications do not expand or otherwise modify MDG's terms and conditions of purchase, including but not limited to the warranty expressed therein, which apply to these products. No license, express or implied, by estoppel or otherwise, to any intellectual property rights is granted by this document or by any conduct of MDG. Customers using or selling MDG products not expressly indicated for use in such applications do so entirely at their own risk and agree to fully indemnify MDG for any damages arising or resulting from such use or sale. Please contact authorized personnel from MDG to obtain written terms and conditions regarding products designed for such applications. Images are indicative only.