

touch

H A N D L E S

Timber Half Moon Handles

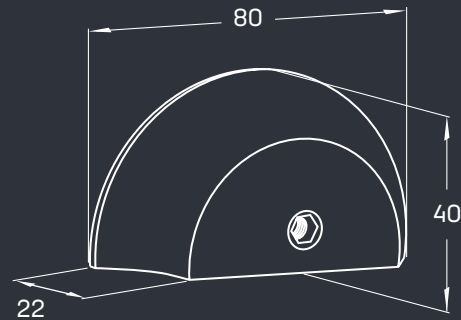
- Made in Australia
- Hand-made turned timber handles
- Vertical Grain
- Suitable for hinged or sliding doors, and drawers. Ideal for pantry doors
- Fixing: Supplied with fixing
- Supplied Raw - Ready for sealing, painting or staining
- Timber may vary in grain & colour
- Sold Individually
- Finish: Victorian Ash (VICASH), Black Butt (BB), American Oak (AMOAK), Burnt Ash (BTASH)

	Part No.	Finish	OA	HC	R	P
A	TSR80	VICASH, AMOAK, BB, BTASH	80	-	40	22
B	TSR160	VICASH, AMOAK, BB, BTASH	160	50	80	26
B	TSR240	VICASH, AMOAK, BB, BTASH	240	80	120	32

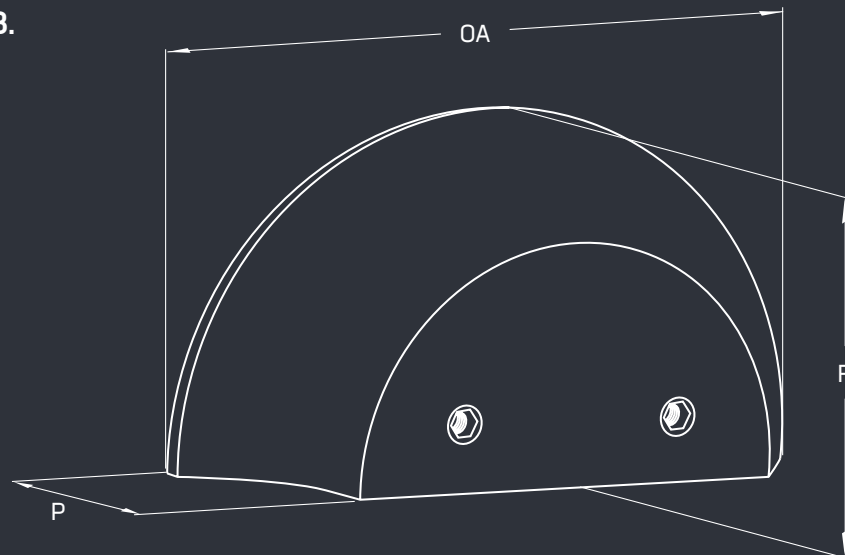
Please note these are hand-made, measurements may vary slightly

1300 121 800 | www.touchhandles.com.au

A.



B.



the finishing touch