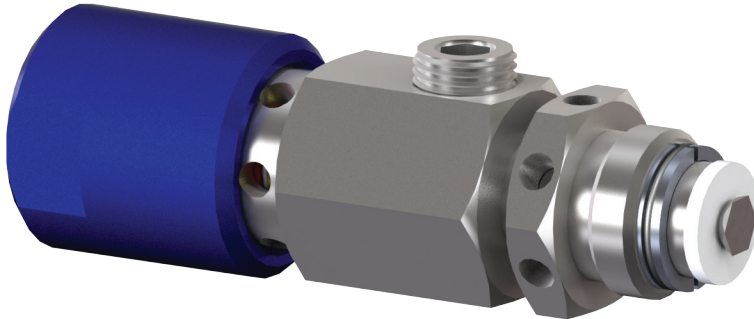
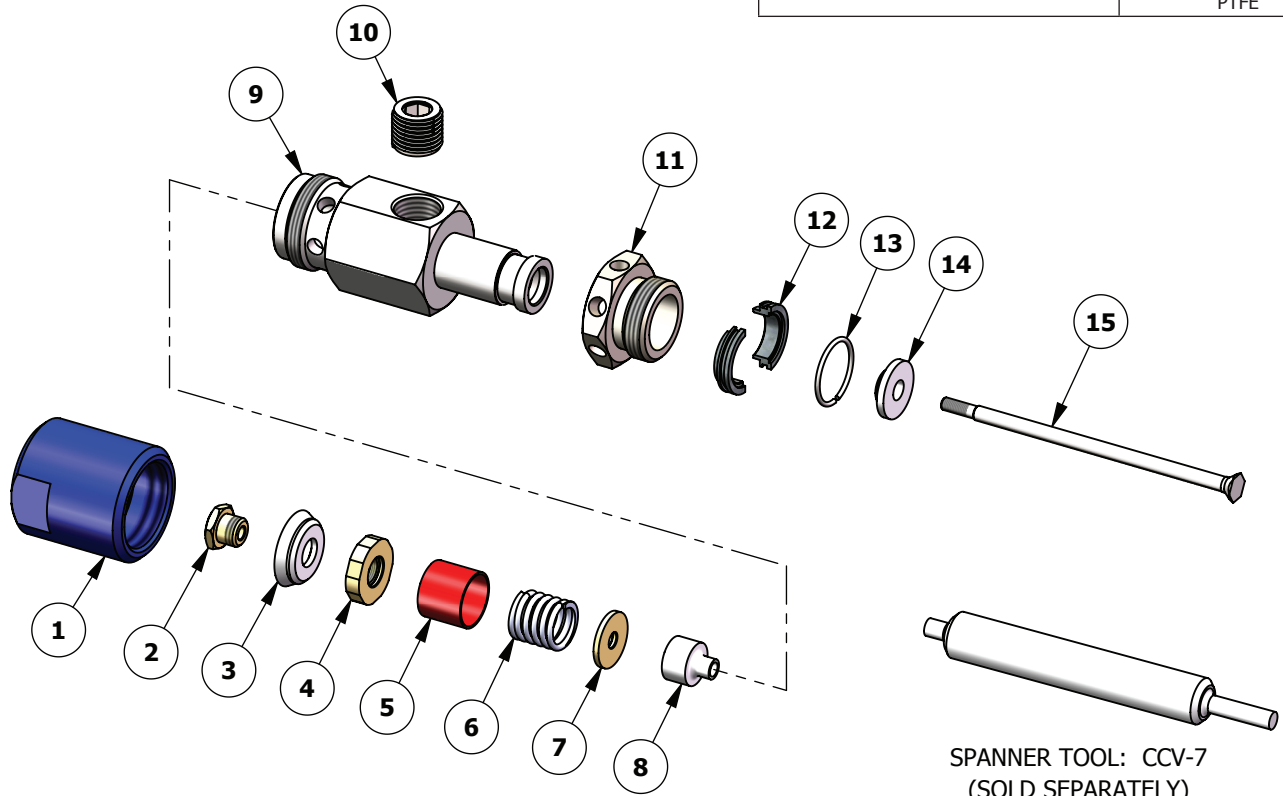


BINKS® CCV-503-SS COLOR CHANGE VALVE



SPECIFICATIONS

Maximum air inlet pressure:	7 bar [105 psi]
Air requirements (operating pressure):	4.8-6.9 bar [70-100 psi]
Air inlet connection:	1/8" NPT (f)
Maximum fluid pressure:	20.7 bar [300 psi]
Fluid inlet connections (2x):	1/4" NPT (f)
Valve actuation speed (ON/OFF cycles):	55 cycles/min
Wetted Parts:	300 series Stainless Steel, PTFE



SPANNER TOOL: CCV-7
(SOLD SEPARATELY)

Item No.	Part No.	Description	Qty.
1	CCV-43-1	END CAP (BLUE)	1
2	CCV-45	● CLAMPING NUT	1
3	VA-246	● CUP	1
4	CCV-3	NUT	1
5	CCV-42	VALVE INDICATOR	1
6	CCV-41-K2	SPRING	1
7	CCV-4	SPRING WASHER	1
8	CCV-8-K2	● VALVE NEEDLE SEAL	1
9	240-2039	VALVE BODY	1

Item No.	Part No.	Description	Qty.
10	SSP-1421	PIPE PLUG, 1/4"	1
11	CCV-13	SPANNER NUT	1
12	240-2030	SPLIT COLLAR	1
13	240-2032	● SPRING CLIP	1
14	CCV-40-K2	● POPPET SEAT	1
15	CCV-39	● STEM	1

● **Parts are included within the following service kits:**
KK-5094 SEAL REBUILD KIT

Recommended grease:
AGMD-010 Silicone free grease 50g [2oz] tube

In this part sheet, the words **WARNING**, **CAUTION** and **NOTE** are used to emphasize important safety information as follows:

⚠ WARNING
 Hazards or unsafe practices which could result in severe personal injury, death or substantial property damage.

⚠ CAUTION
 Hazards or unsafe practices which could result in minor personal injury, product or property damage.

NOTE
 Important installation, operation or maintenance information.

⚠ WARNING

Read the following warnings before using this equipment.



READ THE MANUAL
 Before operating finishing equipment, read and understand all safety, operation and maintenance information provided in the operation manual.



WEAR SAFETY GLASSES
 Failure to wear safety glasses with side shields could result in serious eye injury or blindness.



DE-ENERGIZE, DEPRESSURIZE, DISCONNECT AND LOCK OUT ALL POWER SOURCES DURING MAINTENANCE
 Failure to De-energize, disconnect and lock out all power supplies before performing equipment maintenance could cause serious injury or death.



OPERATOR TRAINING
 All personnel must be trained before operating finishing equipment.



EQUIPMENT MISUSE HAZARD
 Equipment misuse can cause the equipment to rupture, malfunction, or start unexpectedly and result in serious injury.



KEEP EQUIPMENT GUARDS IN PLACE
 Do not operate the equipment if the safety devices have been removed.



PROJECTILE HAZARD
 You may be injured by venting liquids or gases that are released under pressure, or flying debris.



PINCH POINT HAZARD
 Moving parts can crush and cut. Pinch points are basically any areas where there are moving parts.



PACEMAKER WARNING
 You are in the presence of magnetic fields which may interfere with the operation of certain pacemakers.



AUTOMATIC EQUIPMENT
 Automatic equipment may start suddenly without warning.



INSPECT THE EQUIPMENT DAILY
 Inspect the equipment for worn or broken parts on a daily basis. Do not operate the equipment if you are uncertain about its condition.



NEVER MODIFY THE EQUIPMENT
 Do not modify the equipment unless the manufacturer provides written approval.



KNOW WHERE AND HOW TO SHUT OFF THE EQUIPMENT IN CASE OF AN EMERGENCY



PRESSURE RELIEF PROCEDURE
 Always follow the pressure relief procedure in the equipment instruction manual.



NOISE HAZARD
 You may be injured by loud noise. Hearing protection may be required when using this equipment.



HIGH PRESSURE CONSIDERATION
 High pressure can cause serious injury. Relieve all pressure before servicing. Spray from the spray gun, hose leaks, or ruptured components can inject fluid into your body and cause extremely serious injury.



STATIC CHARGE
 Fluid may develop a static charge that must be dissipated through proper grounding of the equipment, objects to be sprayed and all other electrically conductive objects in the dispensing area. Improper grounding or sparks can cause a hazardous condition and result in fire, explosion or electric shock and other serious injury.

IT IS THE RESPONSIBILITY OF THE EMPLOYER TO PROVIDE THIS INFORMATION TO THE OPERATOR OF THE EQUIPMENT. FOR FURTHER SAFETY INFORMATION REGARDING THIS EQUIPMENT, SEE THE GENERAL EQUIPMENT SAFETY BOOKLET (77-5300).

Note: Read and follow all instructions and safety precautions before using this equipment.

Product Descriptions
 CCV-503-5S Color Change Valve



This product is designed for use with Solvent based and Waterborne materials. Suitable for use in Zone 1 and 2, Protection Level: II 2 G X

Manufacturer: **Finishing Brands**
 Toledo, OH 43612

EU Declaration of Incorporation

We: Finishing Brands declare that the above product conforms with the Provisions of Machinery Directive 2006/42/EC and the ATEX Directive 94/9/EC by complying with the following statutory documents and harmonized standards:

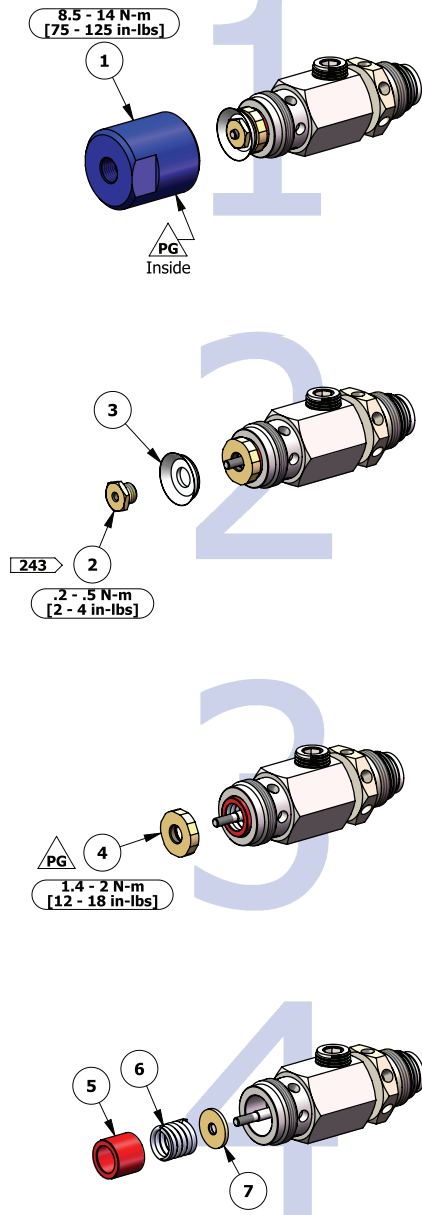
- Machinery Safety Standards EN ISO 12100
- Explosion Prevention Potentially Explosive Atmospheres EN 1127-1
- Non-electrical Equipment for Potentially Explosive Atmospheres BS EN 13463-1

This partly completed machinery supplied with this declaration:

- is designed and constructed solely as a non-functional component to be incorporated into a machine requiring completion.
- must not be put into service until the final machinery into which it is to be incorporated has been declared in conformity with the above statutory documents and harmonized standards.
- a technical construction file is available for inspection by designated bodies.

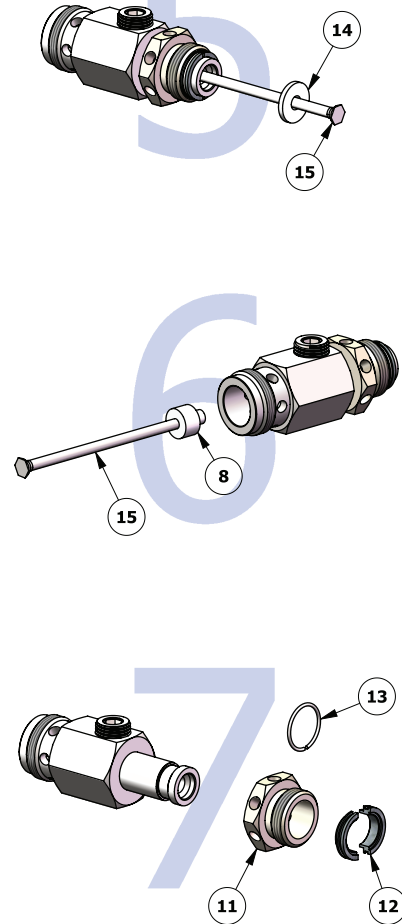
Chuck McCulloch
 Chuck McCulloch, Manager – Fluid Handling Research & Development
 May 01, 2015

DISASSEMBLY ORDER SHOWN. REVERSE FOR REASSEMBLY.

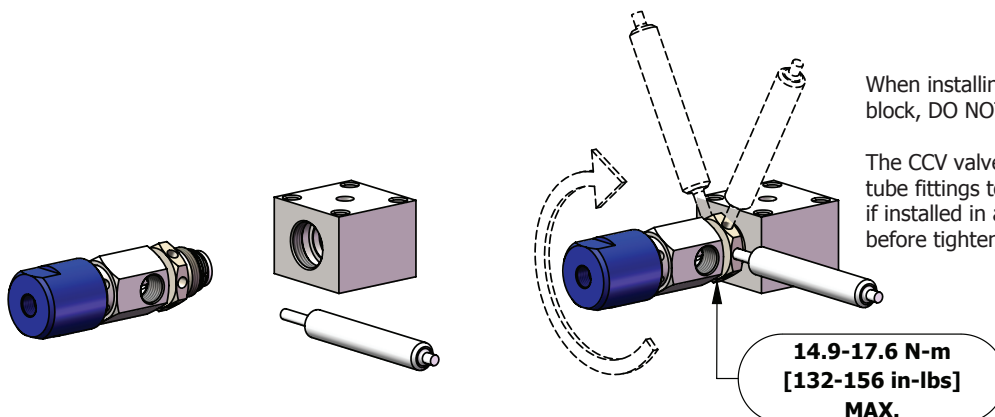


MAINTENANCE SYMBOLS:

- # = ITEM NUMBER (see page 1)
- PG = PETROLEUM GREASE/JELLY Part number = AGMD-010
- 243 = THREAD LOCKER LOCTITE # or equivalent
- # = TORQUE VALUE Nm [in-lb or ft-lb]



HOW TO INSTALL COLOR CHANGE VALVE (CCV) USING THE CCV-7 VALVE TOOL:



When installing the CCV valve assembly into a manifold block, DO NOT use pipe sealant or PTFE tape.

The CCV valve must be supported while tightening the tube fittings to prevent damage to the valve seats, if installed in a manifold. Or you may remove the valve before tightening the fluid inlet fittings.

WARRANTY POLICY

This product is covered by Carlisle Fluid Technologies' materials and workmanship limited warranty. The use of any parts or accessories, from a source other than Carlisle Fluid Technologies, will void all warranties. Failure to reasonably follow any maintenance guidance provided may invalidate any warranty.

For specific warranty information please contact Carlisle Fluid Technologies.

Carlisle Fluid Technologies is a global leader in innovative finishing technologies. Carlisle Fluid Technologies reserves the right to modify equipment specifications without prior notice.

DeVilbiss®, Ransburg®, ms®, BGK®, and Binks®
are registered trademarks of Carlisle Fluid Technologies, Inc.

©2018 Carlisle Fluid Technologies, Inc.
All rights reserved.

For technical assistance or to locate an authorized distributor,
contact one of our international sales and customer support locations.

Region	Industrial / Automotive	Automotive Refinishing
Americas	Tel: 1-800-992-4657 Fax: 1-888-246-5732	Tel: 1-800-445-3988 Fax: 1-800-445-6643
Europe, Africa, Middle East, India	Tel: +44 (0)1202 571 111 Fax: +44 (0)1202 573 488	
China	Tel: +8621-3373 0108 Fax: +8621-3373 0308	
Japan	Tel: +81 45 785 6421 Fax: +81 45 785 6517	
Australia	Tel: +61 (0) 2 8525 7555 Fax: +61 (0) 2 8525 7575	

For the latest information about our products, visit www.carlisleleft.com