

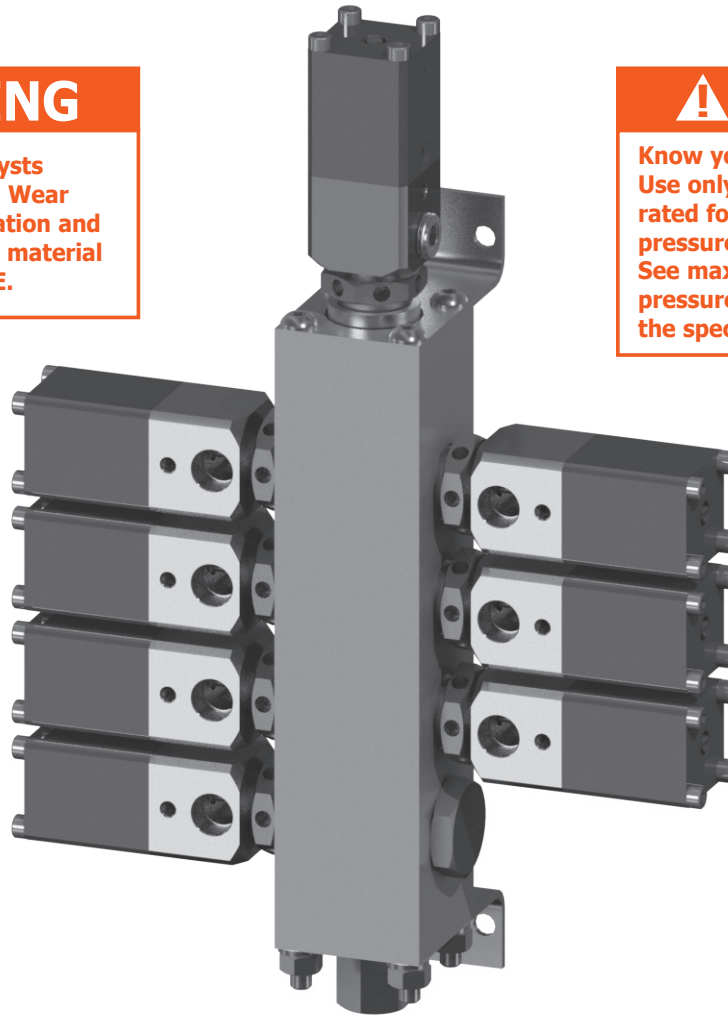
BINKS® 240-3500 COLOR CHANGE VALVE STACKS HIGH PRESSURE

⚠ WARNING

Some materials and catalysts are extremely dangerous. Wear proper PPE during installation and maintenance. Consult the material SDS sheet for specific PPE.

⚠ WARNING

Know your operating pressures! Use only Binks hoses and fittings rated for the required operating pressures for use with this product. See maximum air and fluid pressure for each model listed in the specifications.



SPECIFICATIONS

Maximum air inlet pressure:	7 bar [105 psi]
Air requirements (operating pressure):	4.8-6.9 bar [70-100 psi]
Air inlet ports (1x per valve):	M5 x 0.8 (f)
Maximum fluid pressure:	207 bar [3000 psi]
Fluid inlet ports (2x per valve):	1/4" NPT (f)
Fluid outlet connection:	1/4" NPT (f)
Pressure Drop with 70 cP Test Fluid: (Varies with material pressure and viscosity)	1 PSI pressure drop @ 500 PSI and 200 cc/min 7 PSI pressure drop @ 500 PSI and 1000 cc/min 43 PSI pressure drop @ 500 PSI and 3800 cc/min
Valve actuation speed (ON/OFF cycles):	55 cycles/min
Maximum number of colors:	30
Wetted parts:	300 series Stainless Steel, Tungsten Carbide, PEEK, PTFE

In this part sheet, the words **WARNING**, **CAUTION** and **NOTE** are used to emphasize important safety information as follows:

WARNING

Hazards or unsafe practices which could result in severe personal injury, death or substantial property damage.

CAUTION

Hazards or unsafe practices which could result in minor personal injury, product or property damage.

NOTE

Important installation, operation or maintenance information.

WARNING

Read the following warnings before using this equipment.



READ THE MANUAL

Before operating finishing equipment, read and understand all safety, operation and maintenance information provided in the operation manual.



WEAR SAFETY GLASSES

Failure to wear safety glasses with side shields could result in serious eye injury or blindness.



DE-ENERGIZE, DEPRESSURIZE, DISCONNECT AND LOCK OUT ALL POWER SOURCES DURING MAINTENANCE

Failure to De-energize, disconnect and lock out all power supplies before performing equipment maintenance could cause serious injury or death.



OPERATOR TRAINING

All personnel must be trained before operating finishing equipment.



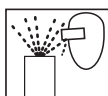
EQUIPMENT MISUSE HAZARD

Equipment misuse can cause the equipment to rupture, malfunction, or start unexpectedly and result in serious injury.



KEEP EQUIPMENT GUARDS IN PLACE

Do not operate the equipment if the safety devices have been removed.



PROJECTILE HAZARD

You may be injured by venting liquids or gases that are released under pressure, or flying debris.



PINCH POINT HAZARD

Moving parts can crush and cut. Pinch points are basically any areas where there are moving parts.



PACEMAKER WARNING

You are in the presence of magnetic fields which may interfere with the operation of certain pacemakers.



AUTOMATIC EQUIPMENT

Automatic equipment may start suddenly without warning.



INSPECT THE EQUIPMENT DAILY

Inspect the equipment for worn or broken parts on a daily basis. Do not operate the equipment if you are uncertain about its condition.



NEVER MODIFY THE EQUIPMENT

Do not modify the equipment unless the manufacturer provides written approval.



KNOW WHERE AND HOW TO SHUT OFF THE EQUIPMENT IN CASE OF AN EMERGENCY



PRESSURE RELIEF PROCEDURE

Always follow the pressure relief procedure in the equipment instruction manual.



NOISE HAZARD

You may be injured by loud noise. Hearing protection may be required when using this equipment.



HIGH PRESSURE CONSIDERATION

High pressure can cause serious injury. Relieve all pressure before servicing. Spray from the spray gun, hose leaks, or ruptured components can inject fluid into your body and cause extremely serious injury.



STATIC CHARGE

Fluid may develop a static charge that must be dissipated through proper grounding of the equipment, objects to be sprayed and all other electrically conductive objects in the dispensing area. Improper grounding or sparks can cause a hazardous condition and result in fire, explosion or electric shock and other serious injury.

IT IS THE RESPONSIBILITY OF THE EMPLOYER TO PROVIDE THIS INFORMATION TO THE OPERATOR OF THE EQUIPMENT. FOR FURTHER SAFETY INFORMATION REGARDING THIS EQUIPMENT, SEE THE GENERAL EQUIPMENT SAFETY BOOKLET (77-5300).

Product Description/Object of Declaration:	Color Stacks - 240-35XX, 240-51XX, CCV-51XX; Pneumatic Color Select Boxes - 240-5002, 240-5003, LPNE5002-00, LPNE5003-00
This Product is designed for use with:	Solvent and Water based Materials
Suitable for use in hazardous area:	Zone 1
Protection Level:	II 2 G X
Notified body details and role:	Element Materials Technology. WN8 9PN UK Lodging of Technical file
This Declaration of Conformity /incorporation is issued under the sole responsibility of the manufacturer:	Carlisle Fluid Technologies, 320 Phillips Ave., Toledo, OH 43612

EU Declaration of Conformity

The object of the declaration described above is in conformity with the relevant Union harmonisation legislation:

Machinery Directive 2006/42/EC

ATEX Directive 2014/34/EU

by complying with the following statutory documents and harmonized standards:

EN ISO 12100:2010 Safety of Machinery - General Principles for Design

EN1127-1:2011 Explosive atmospheres - Explosion prevention - Basic concepts

EN 13463-1:2009 Non electrical equipment for use in potentially explosive atmospheres - Basic methods and requirements

EN 13463-5:2011 Non electrical equipment for use in potentially explosive atmospheres - Protection by constructional safety

The object of the declaration described above is in conformity with the relevant Union harmonisation legislation: Directive 94/9/EC (until April 19th, 2016) and Directive 2014/34/EU (from April 20th, 2016)

Providing all conditions of safe use / installation stated within the product manuals have been complied with and also installed in accordance with any applicable local codes of practice.

Signed for and on behalf of
Carlisle Fluid Technologies:

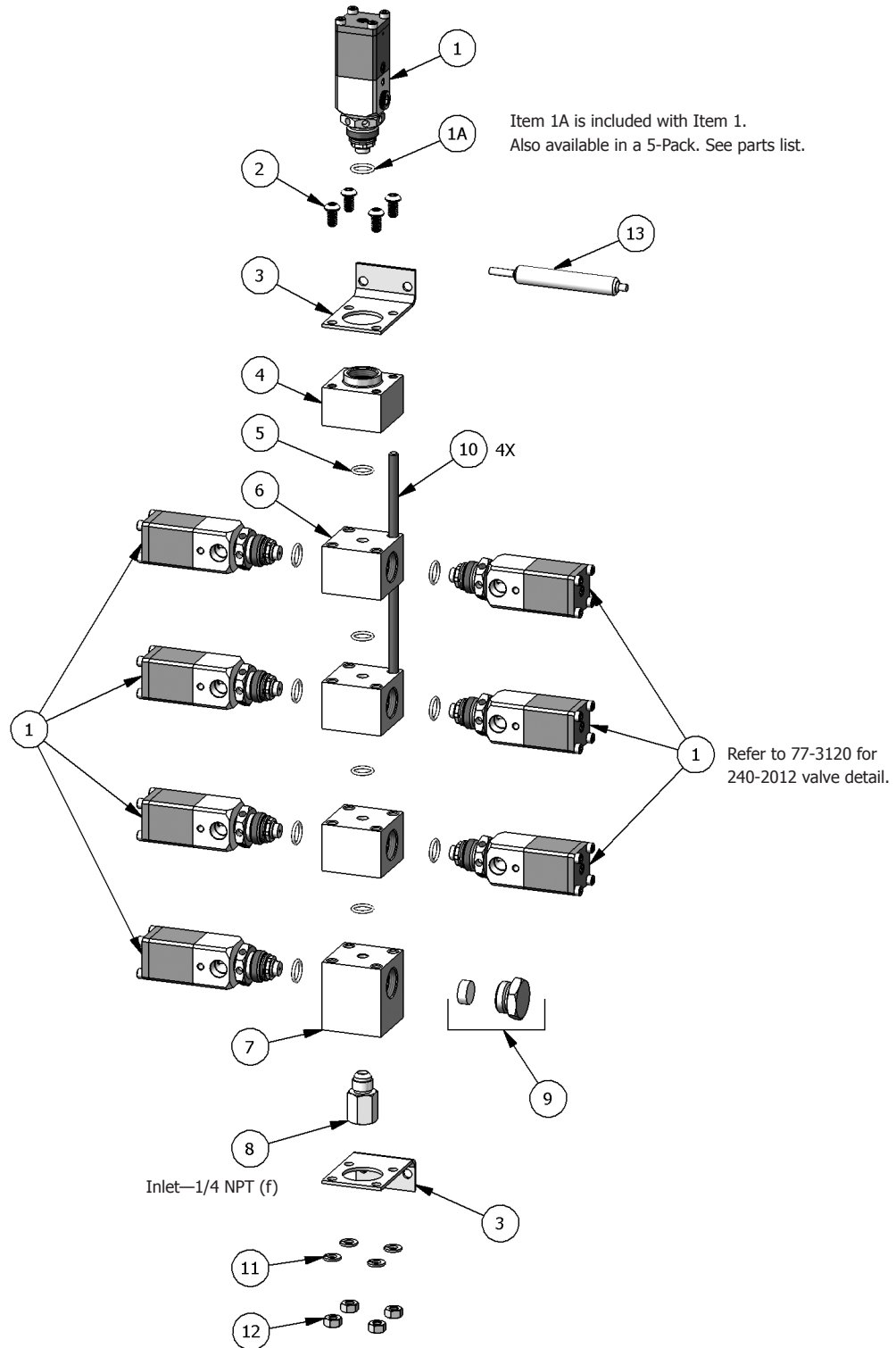


DJ Hasselschwert
10-Mar-16

(Vice President: Global
Product Development)
Toledo, OH 43612

4-3191

240-3500 COLOR CHANGE STACK ASSEMBLIES



240-3508
8 VALVE ASSEMBLY SHOWN
(ITEMS 1, 5, 6 and 9 QUANTITIES WILL VARY)
SEE PARTS LIST AT RIGHT

240-3500 COLOR CHANGE VALVE STACKS

240-3501 – 240-3515

ITEM NO.	PART NO.	DESCRIPTION	240-3501	240-3502	240-3503	240-3504	240-3505	240-3506	240-3507	240-3508	240-3509	240-3510	240-3511	240-3512	240-3513	240-3514	240-3515
1	240-2012	COLOR CHANGE VALVE ASSEMBLY	1	2	3	4	5	6	7	8	9	10	11	12	13	14	15
1A	240-2011-K5 (Included with 240-2012)	O-RING (SOLD AS 5 PACK)	1	2	3	4	5	6	7	8	9	10	11	12	13	14	15
2	77578-16C	BUTTON HEAD CAP SCREW, 1/4"-20 X 1/2"	4	4	4	4	4	4	4	4	4	4	4	4	4	4	4
3	CCV-37	BRACKET	2	2	2	2	2	2	2	2	2	2	2	2	2	2	2
4	CCV-17-SS	MANIFOLD BLOCK, INLET	1	1	1	1	1	1	1	1	1	1	1	1	1	1	1
5	23165-430-K5	O-RING (SOLD AS 5 PACK)	1	1	1	2	2	3	3	4	4	5	5	6	6	7	7
6	CCV-16-SS	MANIFOLD BLOCK	-	-	-	1	1	2	2	3	3	4	4	5	5	6	6
7	CCV-18-SS	MANIFOLD BLOCK, OUTLET	1	1	1	1	1	1	1	1	1	1	1	1	1	1	1
8	20-6970	ADAPTER	1	1	1	1	1	1	1	1	1	1	1	1	1	1	1
9	KK-4370	PLUG KIT	2	1	-	1	-	1	-	1	-	1	-	1	-	1	-
10		1/4"-20 S.S. THREADED ROD (4 PIECES, CUT LENGTH AT RIGHT)	3"			4 3/8"		5 3/4"		7 1/8"		8 1/2"		9 7/8"		11 1/4"	
11		1/4" LOCKWASHER	4	4	4	4	4	4	4	4	4	4	4	4	4	4	4
12		1/4"-20 HEX NUT	4	4	4	4	4	4	4	4	4	4	4	4	4	4	4
13	CCV-7	VALVE TOOL	1	1	1	1	1	1	1	1	1	1	1	1	1	1	1

240-3500 COLOR CHANGE VALVE STACKS

240-3516 – 240-3531

ITEM NO.	PART NO.	DESCRIPTION	240-3516	240-3517	240-3518	240-3519	240-3520	240-3521	240-3522	240-3523	240-3524	240-3525	240-3526	240-3527	240-3528	240-3529	240-3530	240-3531
1	240-2012	COLOR CHANGE VALVE ASSEMBLY	16	17	18	19	20	21	22	23	24	25	26	27	28	28	30	31
1A	240-2011-K5 (Included with 240-2012)	O-RING (SOLD AS 5 PACK)	16	17	18	19	20	21	22	23	24	25	26	27	28	28	30	31
2	77578-16C	BUTTON HEAD CAP SCREW, 1/4"-20 X 1/2"	4	4	4	4	4	4	4	4	4	4	4	4	4	4	4	4
3	CCV-37	BRACKET	2	2	2	2	2	2	2	2	2	2	2	2	2	2	2	2
4	CCV-17-SS	MANIFOLD BLOCK, INLET	1	1	1	1	1	1	1	1	1	1	1	1	1	1	1	1
5	23165-430-K5	O-RING (SOLD AS 5 PACK)	8	8	9	9	10	10	11	11	12	12	13	13	14	14	15	15
6	CCV-16-SS	MANIFOLD BLOCK	7	7	8	8	9	9	10	10	11	11	12	12	13	13	14	14
7	CCV-18-SS	MANIFOLD BLOCK, OUTLET	1	1	1	1	1	1	1	1	1	1	1	1	1	1	1	1
8	20-6970	ADAPTER	1	1	1	1	1	1	1	1	1	1	1	1	1	1	1	1
9	KK-4370	PLUG KIT	1	-	1	-	1	-	1	-	1	-	1	-	1	-	1	-
10		1/4"-20 S.S. THREADED ROD (4 PIECES, CUT LENGTH AT RIGHT)	12 5/8"		14"		15 3/8"		16 3/4"		18 1/8"		19 1/2"		20 7/8"		22 1/4"	
11		1/4" LOCKWASHER	4	4	4	4	4	4	4	4	4	4	4	4	4	4	4	4
12		1/4"-20 HEX NUT	4	4	4	4	4	4	4	4	4	4	4	4	4	4	4	4
13	CCV-7	VALVE TOOL	1	1	1	1	1	1	1	1	1	1	1	1	1	1	1	1

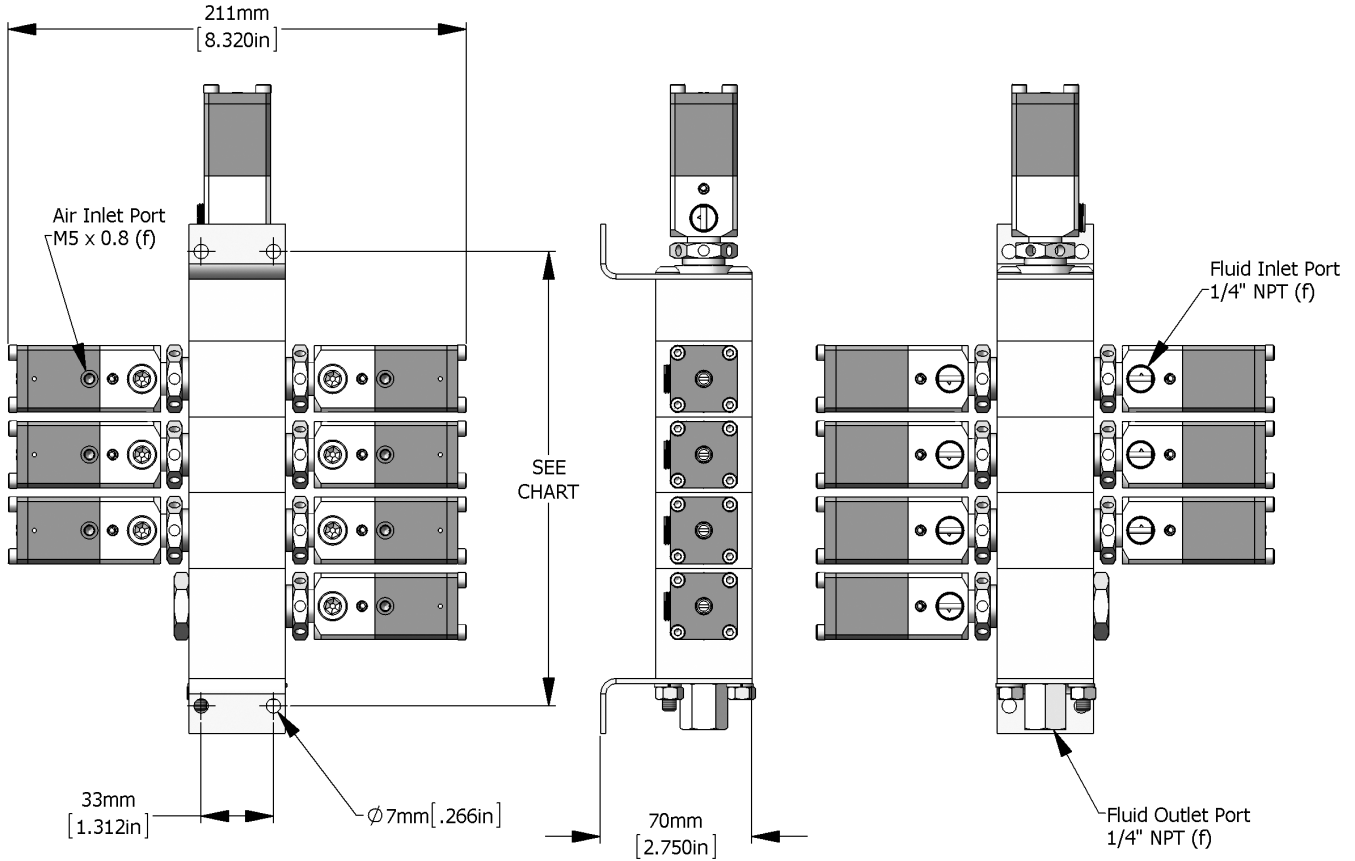
Recommended grease:

AGMD-010 Silicone free grease 50g [2oz] tube

240-3500 INSTALLATION

⚠ WARNING

Color Stack Maximum Working Pressure is 3000 PSI. Use only Binks hoses and fittings rated for 3000 PSI or higher for use with this product.

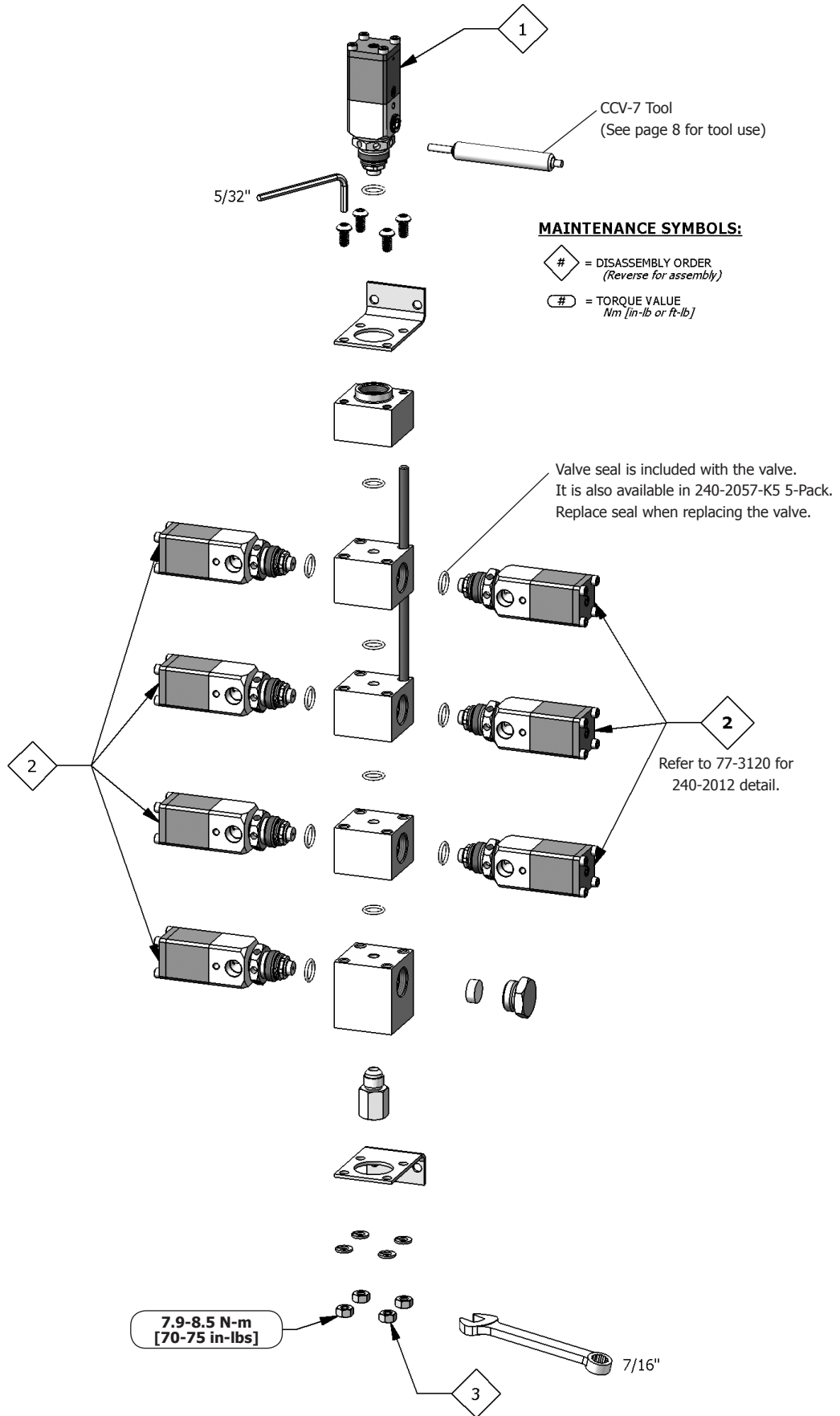


VERTICAL DIMENSION

240-3501	
240-3502	104.8mm [4.125in]
240-3503	
240-3504	139.8mm [5.501in]
240-3505	
240-3506	174.7mm [6.877in]
240-3507	
240-3508	209.6mm [8.253in]
240-3509	
240-3510	244.6mm [9.629in]
240-3511	
240-3512	279.5mm [11.005in]
240-3513	
240-3514	314.5mm [12.381in]
240-3515	
240-3516	349.4mm [13.757in]
240-3517	

240-3518	384.4mm [15.133in]
240-3519	
240-3520	419.3mm [16.509in]
240-3521	
240-3522	454.3mm [17.885in]
240-3523	
240-3524	489.2mm [19.261in]
240-3525	
240-3526	524.2mm [20.637in]
240-3527	
240-3528	559.1mm [22.013in]
240-3529	
240-3530	594.1mm [23.389in]
240-3531	

240-3500 DISASSEMBLY



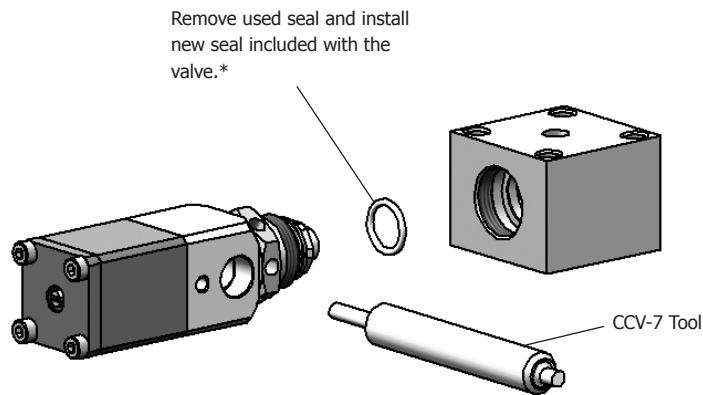
CCV-7 VALVE TOOL

How to install Color Change Valve (CCV) using the CCV-7 Valve Tool

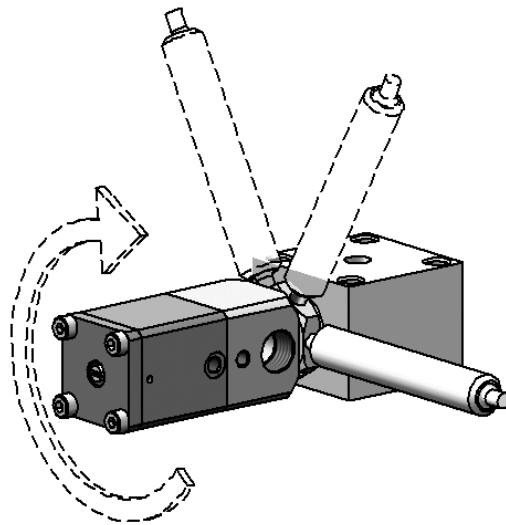
Tighten securely. Test for leaks.

NOTE

A 1-1/16 Wrench may be used to tighten the CCV to the block instead of the CCV-7 Tool.



*Seal also available in 240-2057-K5 quantity pack.

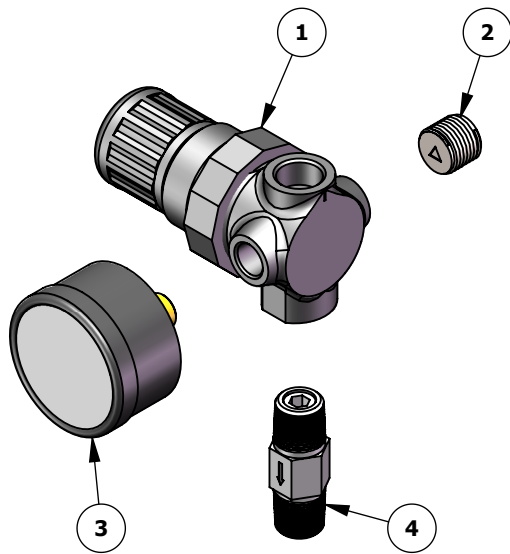


⚠ CAUTION

When installing the CCV valve assembly into a manifold block, **DO NOT** use pipe sealant or PTFE tape.

The CCV must be supported while tightening fittings into the 1/4 NPT ports. Or, the fittings may be installed prior to assembling the valve to a block or valve stack.

ACCESSORIES



240-5004 AIR PUSH REGULATOR KIT

ITEM NO.	PART NO.	DESCRIPTION	QTY.
1	A10857-00	AIR REGULATOR	1
2	SSP-1421	PIPE PLUG	1
3	GA-338	BACK MOUNT GAUGE (0-160 PSI), 1½" DIA	1
4	SSV-809	CHECK VALVE	1

IMAGE SHOWS LEFT SIDE CONFIGURATION.
REVERSE ITEMS 2 & 3 FOR RIGHT SIDE.

NOTES

WARRANTY POLICY

This product is covered by Carlisle Fluid Technologies' materials and workmanship limited warranty. The use of any parts or accessories, from a source other than Carlisle Fluid Technologies, will void all warranties. Failure to reasonably follow any maintenance guidance provided may invalidate any warranty.

For specific warranty information please contact Carlisle Fluid Technologies.

Carlisle Fluid Technologies is a global leader in innovative finishing technologies. Carlisle Fluid Technologies reserves the right to modify equipment specifications without prior notice.

DeVilbiss®, Ransburg®, ms®, BGK®, and Binks®
are registered trademarks of Carlisle Fluid Technologies, Inc.

©2019 Carlisle Fluid Technologies, Inc.
All rights reserved.

For technical assistance or to locate an authorized distributor,
contact one of our international sales and customer support locations.

Region	Industrial / Automotive	Automotive Refinishing
Americas	Tel: 1-800-992-4657 Fax: 1-888-246-5732	Tel: 1-800-445-3988 Fax: 1-800-445-6643
Europe, Africa, Middle East, India	Tel: +44 (0)1202 571 111 Fax: +44 (0)1202 573 488	
China	Tel: +8621-3373 0108 Fax: +8621-3373 0308	
Japan	Tel: +81 45 785 6421 Fax: +81 45 785 6517	
Australia	Tel: +61 (0) 2 8525 7555 Fax: +61 (0) 2 8525 7575	

For the latest information about our products, visit www.carlisleleft.com