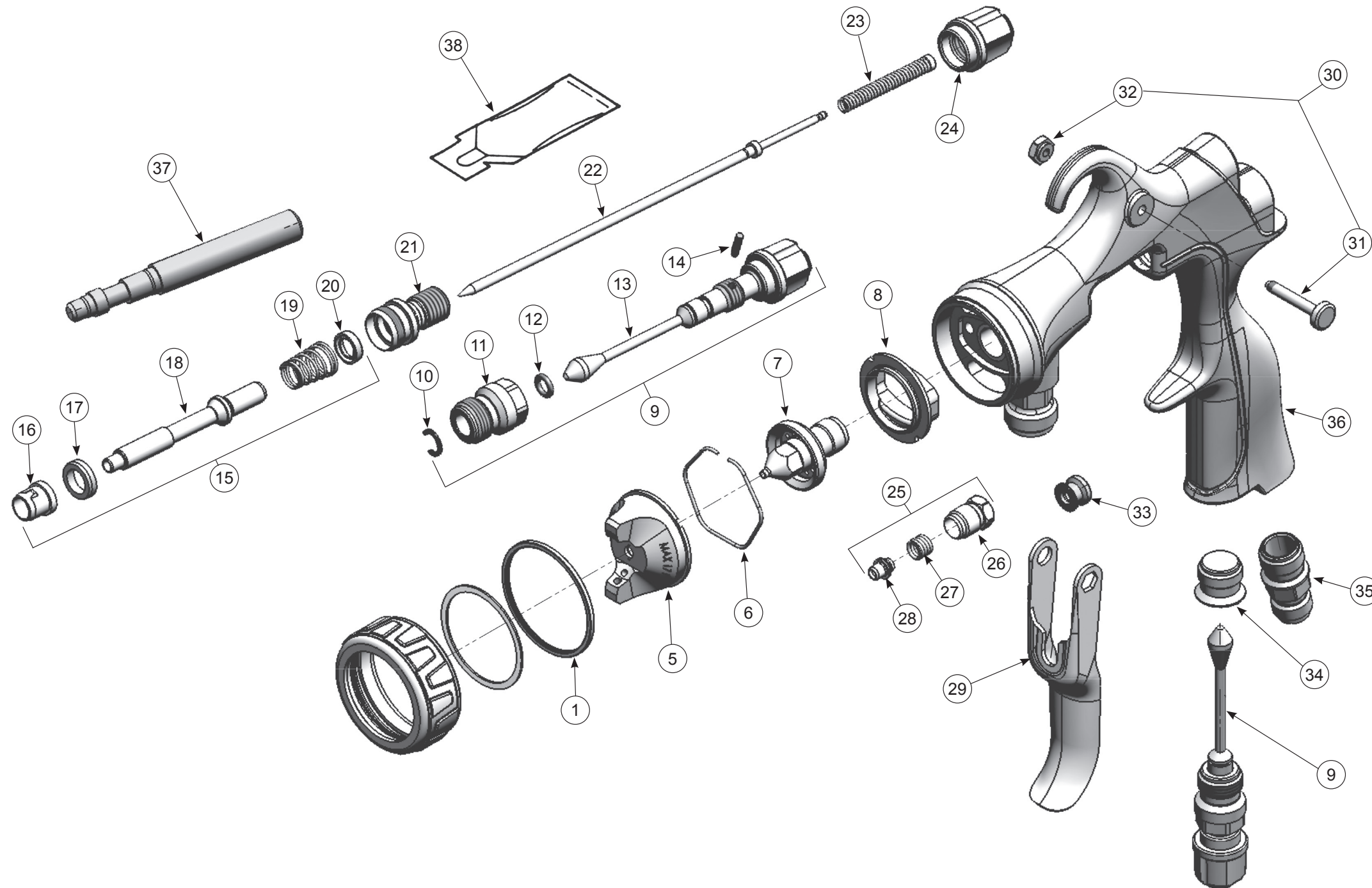


Binks Trophy Pressure & Siphon Spray Gun



Item No.	Part No.	Description	Qty
1	54-6120	AIR CAP RETAINING RING ASSEMBLY	1
5	SEE BACK PAGE	AIR CAP	1
6	JGA-156-K10	SPRING-CLIP (KIT OF 10)	1
7	SEE BACK PAGE	FLUID NOZZLE	1
8	54-6102-K3	BAFFLE/SEPARATOR (KIT OF 3)	1
9	54-6122	SIDE PORT VALVE ASSEMBLY	1
10	SOLD IN KIT 54-6122	RETAINING CLIP	1
11	SOLD IN KIT 54-6122	BODY BUSHING	1
12	SOLD IN KIT 54-6122	O-RING	1
13	SOLD IN KIT 54-6122	SIDE PORT STEM	1
14	SOLD IN KIT 54-6122	PIN	1
15	54-6131-K	AIR VALVE SERVICE KIT	1
16	SOLD IN KIT 54-6131	FRONT SEAL – AIR VALVE	1
17	SOLD IN KIT 54-6131	FRONT AIR VALVE SEAL	1
18	54-6109	AIR VALVE SPINDLE	1
19	SOLD IN KIT 54-6131	AIR VALVE SPRING	1
20	SOLD IN KIT 54-6131	REAR SEAL – AIR VALVE	1
21	SN-66	HOUSING	1
22	47-6825	NEEDLE – STAINLESS STEEL (STANDARD)	1
	47-6830	NEEDLE – TUNGSTEN CARBIDE	1
	47-6826	NEEDLE – PLASTIC TIP	1
23	54-6133-K3	SPRING/PAD ASSEMBLY (STANDARD) (KIT OF 3)	
	54-6134-K	SPRING/PAD ASSEMBLY KIT – HEAVY DUTY (OPTIONAL)	
24	54-6111	KNOB – NEEDLE ADJUSTING	1
25	54-6130-K	NEEDLE PACKING KIT (STANDARD)	1
	54-6129-K	NEEDLE PACKING KIT (VITREOUS)	
26	SOLD IN KIT 54-6129	NUT – PACKING	1
27	SOLD IN KIT 54-6129	SPRING FOR PACKING	1
28	SOLD IN KIT 54-6130	NEEDLE PACKING (STANDARD)	1
	54-6119	NEEDLE PACKING, VITREOUS KIT OF 3	1
29	54-4360	TRIGGER	1
30	54-6132-K	TRIGGER SCREW NUT KIT	1
31	SOLD IN KIT 54-6132-K	TRIGGER SCREW	1
32	SOLD IN KIT 54-6132-K	TRIGGER NUT	1
33	54-3513	SPINDLE CAP	1
34	SN-11	PLUG	1
35	54-6112	FITTING – AIR INLET	1
37	SPN-7	TOOL – SEAL INSERTION	1



North America 1.800.992.4657 marketing@carlisleleft.com
EMEA 44.0.1202.571111 marketing-uk@carlisleleft.com
China 86.21.33730108 mkt_cn@carlisleleft.com
Japan 81.45.785.6421 jp-rans-tokyosales@carlisleleft.com

Carlisleleft.com

©2021 Carlisle Fluid Technologies, Inc. | Models and specifications subject to change without notice. All rights reserved. | Form No. 03-212-01



Binks Trophy Pressure & Siphon Spray Gun



AIR CAPS & FLUID NOZZLE SELECTION

CONVENTIONAL AIR CAP AND FLUID NOZZLE SELECTION CHART								
Air Cap	Air Cap Part No.	Spray Pattern Range	CFM @ 30 PSI	CFM @ 50 PSI	CFM @ 70 PSI	Fluid Nozzle	Siphon or Pressure	Typical Coatings
11-C	46-6500	8 – 12"	9.8	14.2	18.7	45-11050 series, 1.0 mm – 1.8 mm	P	Stains, Primers, Lacquers, Enamels, Acrylics, Reduced Latex, Mold Release
12-C	46-6500	4 – 12"	8.3	12.1	14.2	45-11050 series, 1.0 mm – 1.8 mm	P, S	Lacquers, Enamels, Top Coats, Low Viscosity Adhesives
14-C	46-6503	8 – 14"	17.0	24.4	31.2	45-11060 series, 2.0 mm – 2.6 mm or 45-11080 Tungsten Carbide Series (VT), 1.4 mm – 2.6 mm	P	Zinc Rich, Adhesives, Glazes, Engobies, Ceramics, Porcelain Enamels

LVMP – LOW VOLUME MEDIUM PRESSURE AIR CAP AND FLUID NOZZLE SELECTION CHART						
Air Cap	Air Cap Part No.	Spray Pattern Range	CFM @ 30 PSI Gun Inlet (Dynamic)	Fluid Nozzle	Siphon or Pressure	Typical Coatings
22-L	46-6510	4 – 12"	11.2	45-11050 series, .5 mm – 1.6 mm	P, S	Stains, Primers, Lacquers, Enamels, Acrylics, Reduced Latex
23-L	46-6511	4 – 12"	10.6	45-11050 series, 1.0 mm – 1.8 mm	P, S	Lacquers, Enamels, Top Coats, Low Viscosity Adhesives
24-L	46-6512	2 – 6"	14.3	45-11050 series, .5 mm – 1.8 mm	P, S	Small Pattern Applications of Stains, Lacquers, Enamels, Acrylics
25-L	46-6513	4 – 15"	14.7	45-11050 series, .85 mm – 1.8 mm	P	Dyes, Stains, Toners, Enamels, Lacquers, Primers, Urethanes, Solvent Coatings, Waterborne Coatings

HVLP – HIGH VOLUME LOW PRESSURE AIR CAP AND FLUID NOZZLE SELECTION CHART							
Air Cap	Air Cap Part No.	Spray Pattern Range	SCFM @ 10 PSI Cap Pressure (Dynamic)	Gun Inlet PSI @ 10 PSI at Air Cap (Dynamic)	Fluid Nozzle	Siphon or Pressure	Typical Coatings
31-H	46-6517	8 – 12"	10.5	17	45-11050 series, .85 mm – 1.8 mm	P, S	Stains, Low Viscous Enamels
32-H	46-6518	8 – 18"	15.5	24	45-11050 series, .85 mm – 1.8 mm	P, S	Lacquers, Enamels, Multi-Colors, Multi-Spec, Nonstick Coatings, Cut-Latex
33-H	46-6519	8 – 12"	11.0	16	45-11050 series, .85 mm – 1.6 mm	P	Stains, Lacquers, Enamel, Multi-Color, Multi-Spec, Nonstick Coatings
39-H	46-6525	4 – 12"	10.0	14	45-11050 series, .85 mm – 1.6 mm	P	Dyes, Stains, Toners, Enamels, Lacquers, Primers, Urethanes, Solvent Coatings, Waterborne Coatings

ROUND SPRAY AIR CAP AND FLUID NOZZLE SELECTION CHART								
Air Cap	Air Cap Part No.	Spray Pattern Range	CFM @ 30 PSI	CFM @ 50 PSI	CFM @ 70 PSI	Fluid Nozzle	Siphon or Pressure	Typical Coatings
16	46-6505	2 – 4"	5.6	7.8	10.5	45-11050 series	P, S	Lacquers, Enamels

COMPLETE GUN ASSEMBLY

Material	Gun Assembly Part No.	Fluid Nozzle	Spray Technology
THIN (15-19 sec. Zahn 2 cup) Wash primers, dyes, stains solvent, water, inks, sealers, laquers, lubricants, zinc chromates, acrylics.	2465-10CN-11S0	1.0 mm (.039") X 11C	Conventional
	2465-12CN-11S0	1.2 mm (.047") X 11C	Conventional
	2465-14CN-11S0	1.4 mm (.055") X 11C	Conventional
	2465-16CN-11S0	1.6 mm (.063") X 11C	Conventional
	2465-16CN-12S0	1.6 mm (.063") X 12C	Conventional
	2465-16CN-12SS	1.6 mm (.063") X 12C	Conventional
	2465-18CN-12SS	1.8 mm (.070") X 12C	Conventional
	2465-85LV-22S0	0.85 mm (.034") X 22L	LVMP
	2465-10LV-22S0	1.0 mm (.039") X 22L	LVMP
	2465-12LV-23S0	1.2 mm (.047") X 23L	LVMP
	2465-14LV-23S0	1.4 mm (.055") X 23L	LVMP
	2465-16LV-23S0	1.6 mm (.063") X 23L	LVMP
	2465-18LV-23SS	1.8 mm (.070") X 23L	LVMP
	2465-85LV-25S0	0.85 mm (.034") X 25L	LVMP
	2465-10LV-25S0	1.0 mm (.039") X 25L	LVMP
	2465-12LV-25S0	1.2 mm (.047") X 25L	LVMP
	2465-12LV-23S0	1.2 mm (.047") X 23L	LVMP
	2465-85HV-32S0	0.85 mm (.034") X 32H	HVLP
	2465-85HV-33S0	0.85 mm (.034") X 33H	HVLP
	2465-85HV-31P0	0.85 mm (.034") X 31H	HVLP
	2465-10HV-32S0	1.0 mm (.039") X 32H	HVLP
	2465-10HV-33S0	1.0 mm (.039") X 33H	HVLP
	2465-10HV-31P0	1.0 mm (.039") X 31H	HVLP
	2465-12HV-32S0	1.2 mm (.047") X 32H	HVLP
	2465-12HV-31P0	1.2 mm (.047") X 31H	HVLP
	2465-18HV-32SS	1.8 mm (.070") X 32H	HVLP
2465-85HV-39S0	0.85 mm (.034") X 39H	HVLP	
2465-10HV-39S0	1.0 mm (.039") X 39H	HVLP	
2465-12HV-39S0	1.2 mm (.047") X 39H	HVLP	
2465-12CN-16S0	1.2 mm (.047") X 16	Round	
HEAVY (31-66 sec. Zahn 2 cup)	2465-16CN-11S0	1.6 mm (.063") X 11C	Conventional
	2465-16CN-12S0	1.6 mm (.063") X 12C	Conventional
	2465-18CN-11S0	1.8 mm (.070") X 11C	Conventional
	2465-20CN-14S0	2.0 mm (.079") X 14C	Conventional
	2465-22CN-14S0	2.2 mm (.087") X 14C	Conventional
	2465-14HV-32S0	1.4 mm (.055") X 32H	HVLP
	2465-14HV-31P0	1.4 mm (.055") X 31H	HVLP
CERAMICS Abrasive materials, glazes, engobes, porcelain enamel.	2465-14CN-14V0	1.4 mm (.055") X 14C	Conventional
	2465-18CN-14V0	1.8 mm (.070") X 14C	Conventional
	2465-22CN-14V0	2.2 mm (.087") X 14C	Conventional
	2465-26CN-14V0	2.6 mm (.102") X 14C	Conventional
WRINKLE ENAMELS	2465-14CN-11S0	1.4 mm (.055") X 11C	Conventional
	2465-16CN-11S0	1.6 mm (.063") X 11C	Conventional

Material	Gun Assembly Part No.	Fluid Nozzle	Spray Technology
MEDIUM (20-30 sec. Zahn 2 cup) Synthetic enamels, varnishes, shellacs, fillers, primers, epoxies, urethanes, lubricants, wax emulsions, enamels.	2465-12CN-11S0	1.2 mm (.047") X 11C	Conventional
	2465-14CN-11S0	1.4 mm (.055") X 11C	Conventional
	2465-16CN-11S0	1.6 mm (.063") X 11C	Conventional
	2465-16CN-12S0	1.6 mm (.063") X 12C	Conventional
	2465-18CN-11S0	1.8 mm (.070") X 11C	Conventional
	2465-18CN-12S0	1.8 mm (.070") X 12C	Conventional
	2465-16CN-12SS	1.6 mm (.063") X 12C	Conventional
	2465-18CN-12SS	1.8 mm (.070") X 12C	Conventional
	2465-20CN-14S0	2.0 mm (.079") X 14C	Conventional
	2465-22CN-14S0	2.2 mm (.087") X 14C	Conventional
	2465-12LV-25S0	1.2 mm (.047") X 25L	LVMP
	2465-12LV-23S0	1.2 mm (.047") X 23L	LVMP
	2465-14LV-23S0	1.4 mm (.055") X 23L	LVMP
	2465-16LV-23S0	1.6 mm (.063") X 23L	LVMP
	2465-14LV-24S0	1.4 mm (.055") X 24L	LVMP
	2465-18LV-23SS	1.8 mm (.070") X 23L	LVMP
	2465-12LV-25S0	1.2 mm (.047") X 25L	LVMP
	2465-14LV-25S0	1.4 mm (.055") X 25L	LVMP
	2465-18LV-25S0	1.8 mm (.070") X 25L	LVMP
	2465-12HV-32S0	1.2 mm (.047") X 32H	HVLP
	2465-12HV-31P0	1.2 mm (.047") X 31H	HVLP
	2465-14HV-32S0	1.4 mm (.055") X 32H	HVLP
	2465-14HV-32SS	1.4 mm (.055") X 32H	HVLP
	2465-14HV-31P0	1.4 mm (.055") X 31H	HVLP
	2465-16HV-32S0	1.6 mm (.063") X 32H	HVLP
	2465-18HV-32S0	1.8 mm (.070") X 32H	HVLP
2465-18HV-32SS	1.8 mm (.070") X 32H	HVLP	
2465-12HV-39S0	1.2 mm (.047") X 39H	HVLP	
2465-14HV-39S0	1.4 mm (.055") X 39H	HVLP	
2465-12CN-16S0	1.2 mm (.047") X 16	Round	
ADHESIVES Water based vinyl glues, solvent based neoprenes, contact cements.	2465-18CN-12SS	1.8 mm (.070") X 12C	Conventional
	2465-20CN-14S0	2.0 mm (.079") X 14C	Conventional
	2465-22CN-14S0	2.2 mm (.087") X 14C	Conventional
	2465-12CN-11S0	1.2 mm (.047") X 11C	Conventional
MOLD RELEASE	2465-12CN-11S0	1.2 mm (.047") X 11C	Conventional
ZINC RICH COATINGS	2465-22CN-14V0	2.2 mm (.087") X 14C	Conventional
NON-STICK COATINGS	2465-10CN-11S0	1.0 mm (.039") X 11C	Conventional
	2465-12CN-11S0	1.2 mm (.047") X 11C	Conventional
	2465-18CN-12SS	1.8 mm (.070") X 12C	Conventional
HAMMERS	2465-14CN-11S0	1.4 mm (.055") X 11C	Conventional
	2465-16CN-11S0	1.6 mm (.063") X 11C	Conventional
	2465-16CN-12S0	1.6 mm (.063") X 12C	Conventional