

TOTAL FINISHING



SYSTEMS



SOLUTIONS



SUPPLIES



THIS DOCUMENT CONTAINS CONFIDENTIAL AND PROPRIETARY INFORMATION THAT CANNOT BE REPRODUCED OR DIVULGED, IN WHOLE OR IN PART, WITHOUT WRITTEN AUTHORIZATION FROM TOTAL FINISHING SOLUTIONS

| | | | | |
|----------|-------|----------|---------------------------|---------------------------|
| DRAWN | david | 2/8/2022 | TOTAL FINISHING SOLUTIONS | |
| CHECKED | | | TITLE | |
| QA | | | FILTER WALL | |
| MFG | | | 8' W X 8'H X 4'W | |
| APPROVED | | | SIZE | DWG NO |
| MATERIAL | | | D | TOTAL FINISHING SOLUTIONS |
| | | | SCALE | 1 / 10 |
| | | | | SHEET 1 OF 1 |

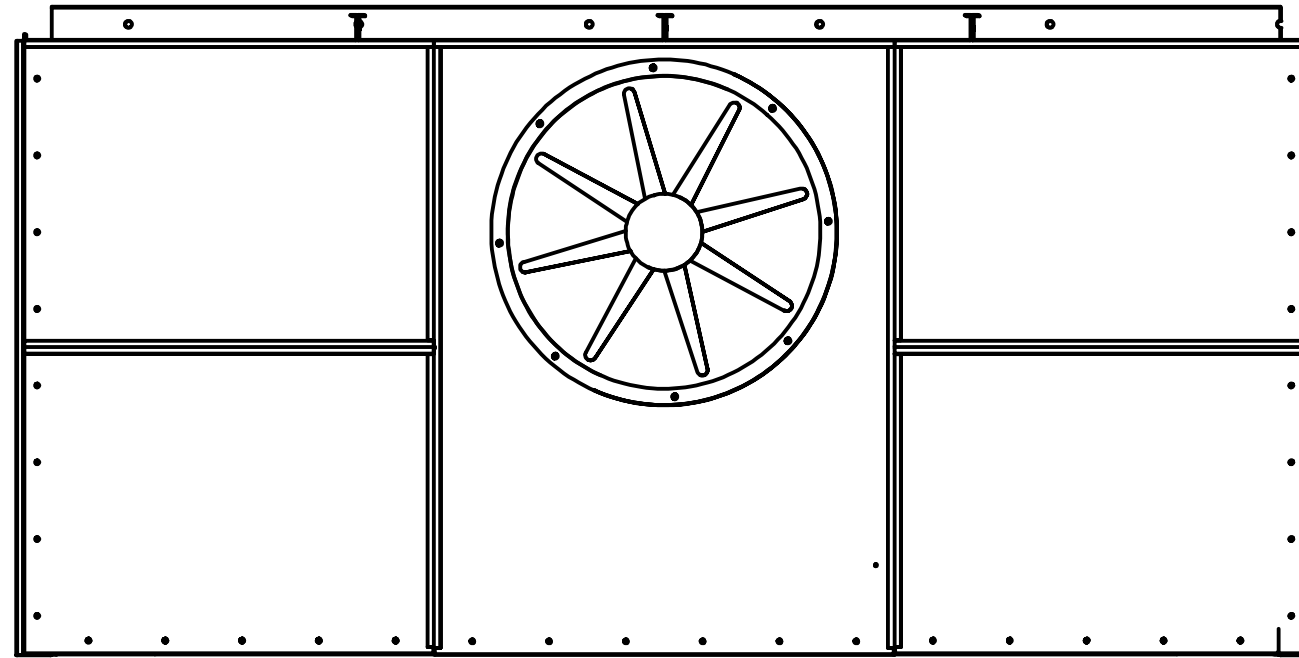
TOTAL FINISHING



SYSTEMS

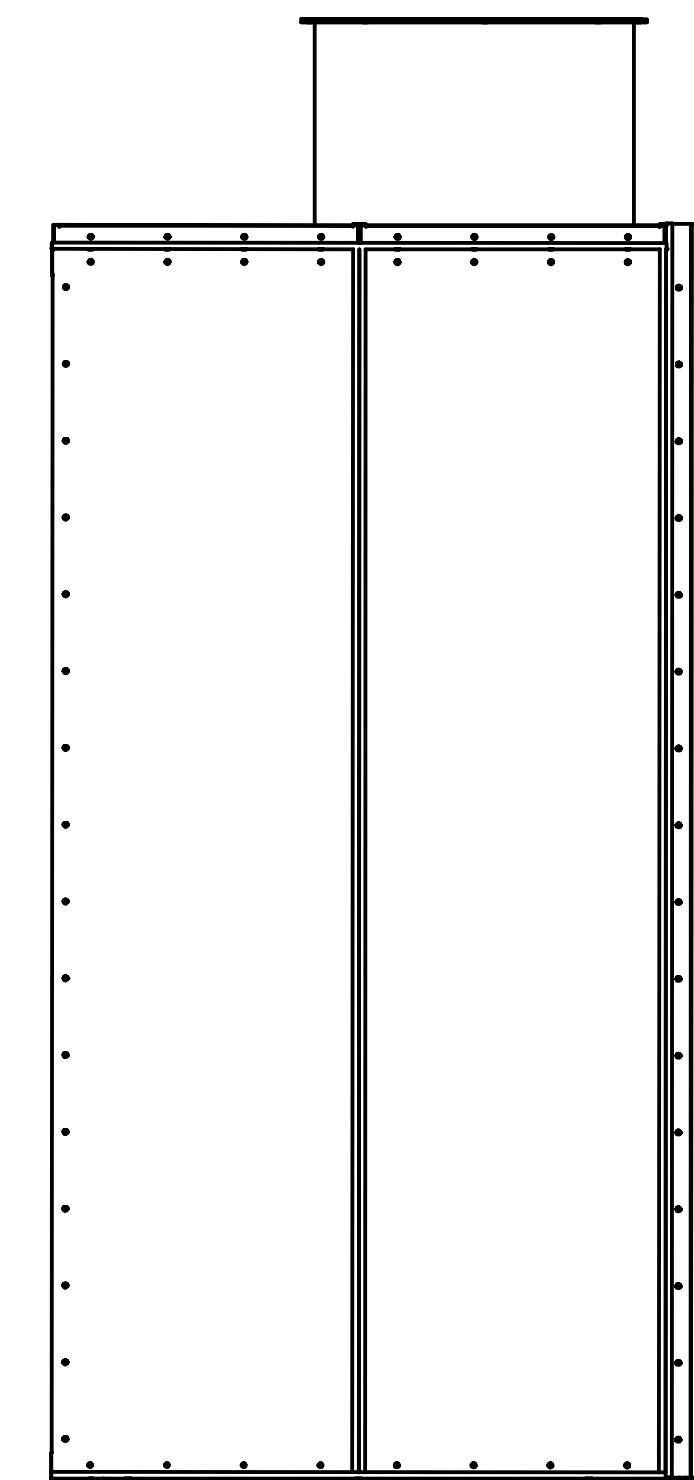
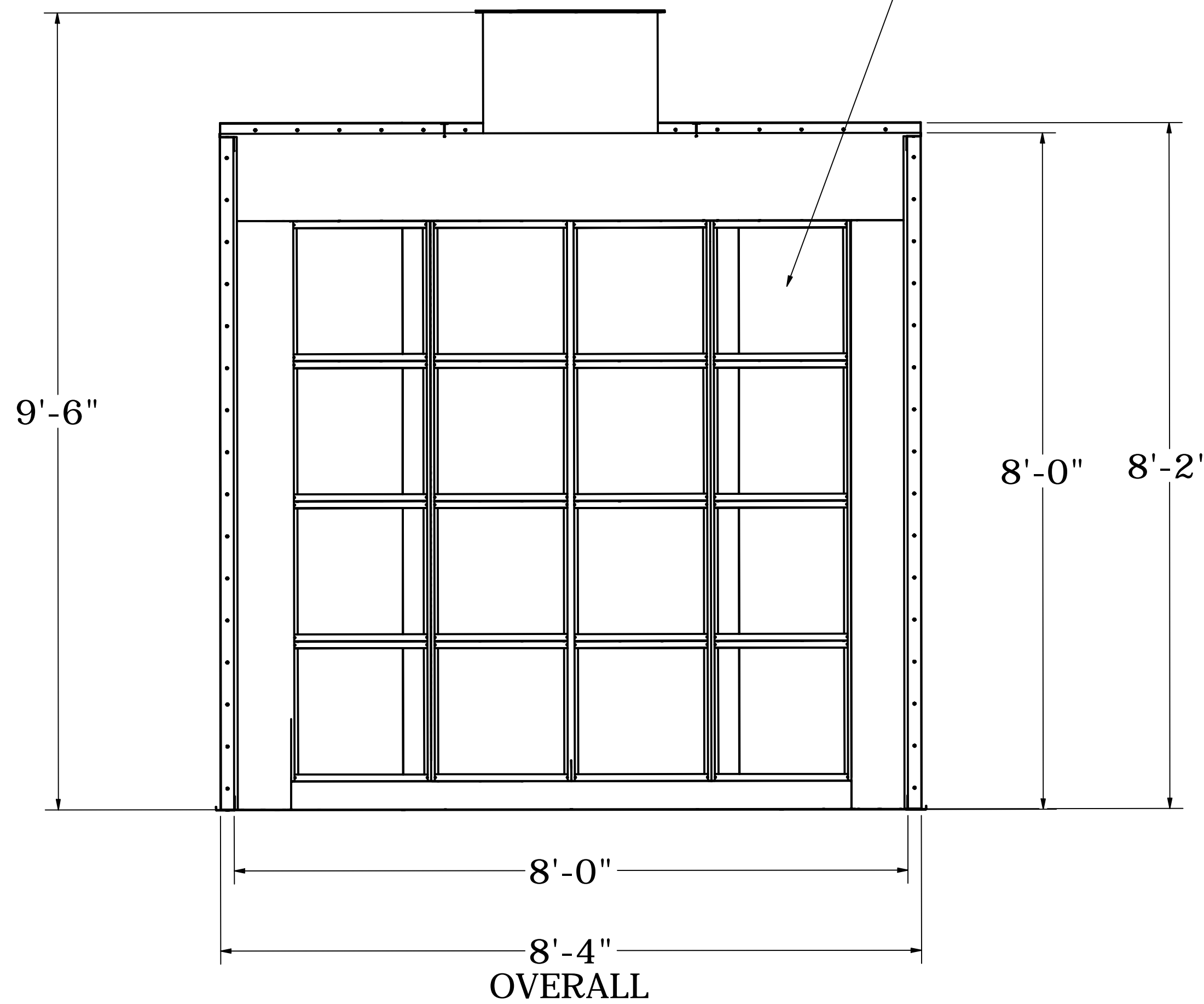
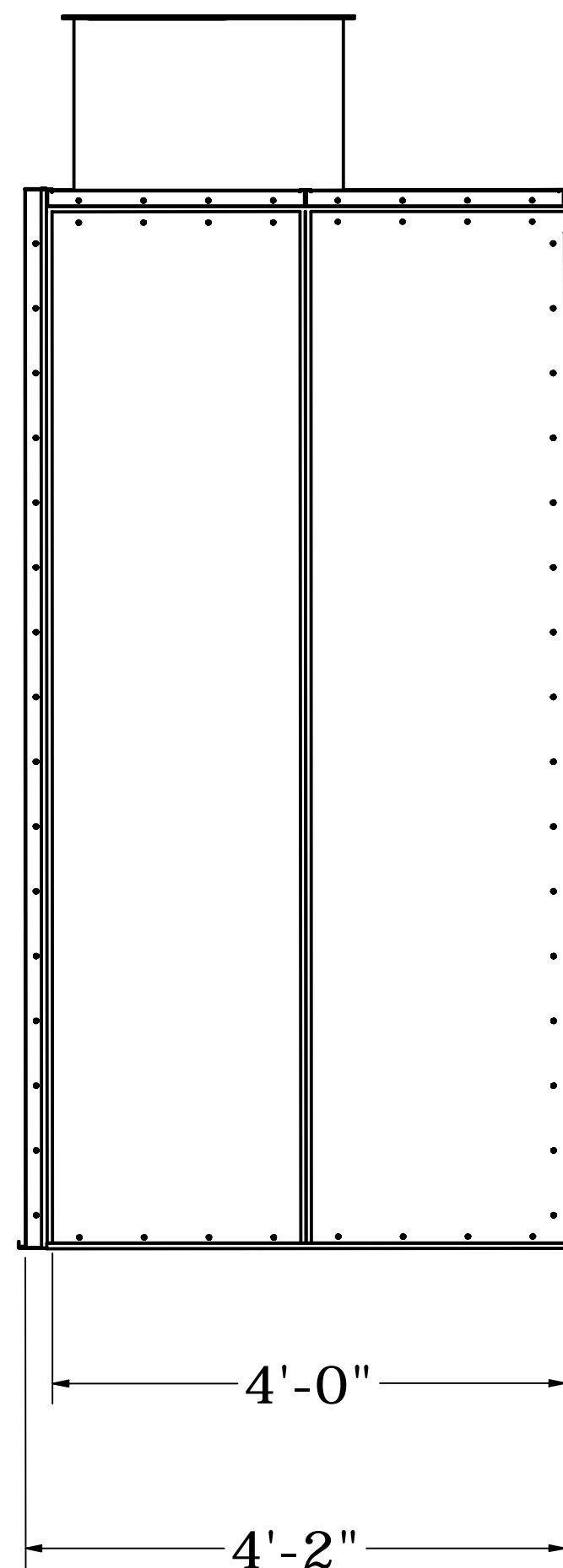
SOLUTIONS

SUPPLIES



24" TUBE AXIAL FAN

(16) 20" X 20" EXHAUST FILTERS

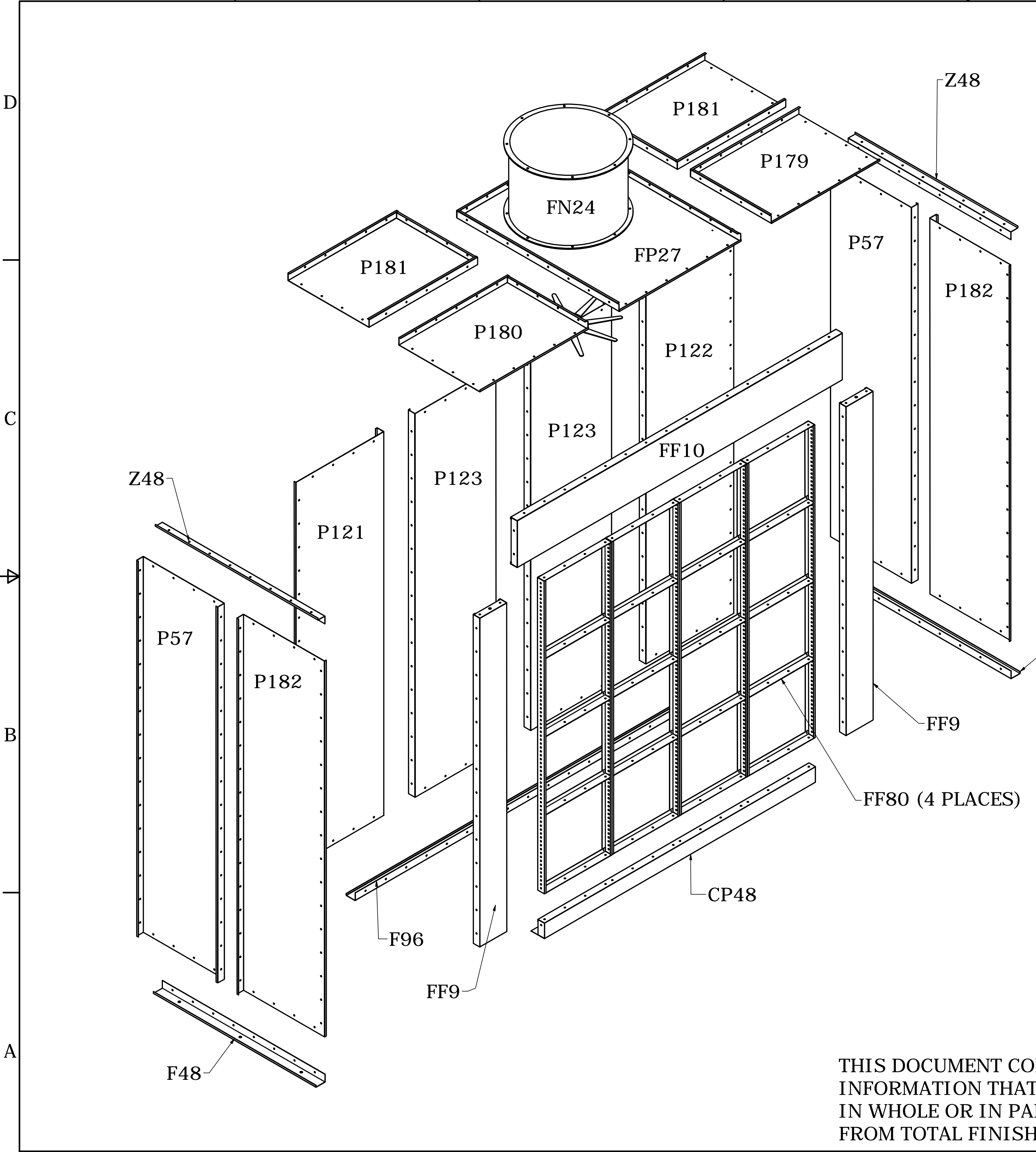


THIS DOCUMENT CONTAINS CONFIDENTIAL AND PROPRIETARY INFORMATION THAT CANNOT BE REPRODUCED OR DIVULGED, IN WHOLE OR IN PART, WITHOUT WRITTEN AUTHORIZATION FROM TOTAL FINISHING SOLUTIONS

| | | | | |
|----------|-------|----------|---------------------------|---------------------------|
| DRAWN | david | 2/8/2022 | TOTAL FINISHING SOLUTIONS | |
| CHECKED | | | TITLE | |
| QA | | | FILTER WALL | |
| MFG | | | 8' W X 8'H X 4'W | |
| APPROVED | | | SIZE | DWG NO |
| MATERIAL | | | D | TOTAL FINISHING SOLUTIONS |
| | | | SCALE | 1/15 |
| | | | | SHEET 1 OF 1 |

8 7 6 5 4 3 2 1

| PARTS LIST | | | |
|------------|-----|---|-------------|
| ITEM | QTY | PART NUMBER | DESCRIPTION |
| P57 | 2 | WP96X24 | |
| P122 | 1 | WPBC98X26 RIGHT _500 INVERTED FLANGE | |
| P121 | 1 | WPBC98X26 LEFT _500 INVERTED FLANGE | |
| P123 | 2 | WP98X24 | |
| Z48 | 2 | ZC48 | |
| FF48 | 2 | FLOOR CHANNEL 48 | |
| FP27 | 1 | TOTAL FIINISHING FPBX48X36FAN24 | |
| P181 | 2 | TOTAL FINISHING WPB1EX32X24 | |
| FN24 | 1 | FAN 24 | |
| | | | |
| P182 | 2 | WP96X24G _500 INVERTED FLANGE | |
| | | | |
| FF80 | 4 | FILTER FRAME 80 X 20 | |
| CP48 | 1 | PLENUM FILTER FRAME BASE 80 X 4 | |
| FF9 | 2 | FILTER WALL 8' X 8' SIDE BOX PANEL 84 X 8 | |
| FF10 | 1 | WPBX96X12_FOR FILTER WALL 8' X 8' TOP PANEL | |
| P179 | 1 | TOTAL FINISHING WPB1EX32X24 _500 FLANGE FRONT RIGHT | |
| P180 | 1 | TOTAL FINISHING WPB1EX32X24 _500 FLANGE FRONT LEFT | |
| F96 | 1 | FLOOR CHANNEL 96 | |

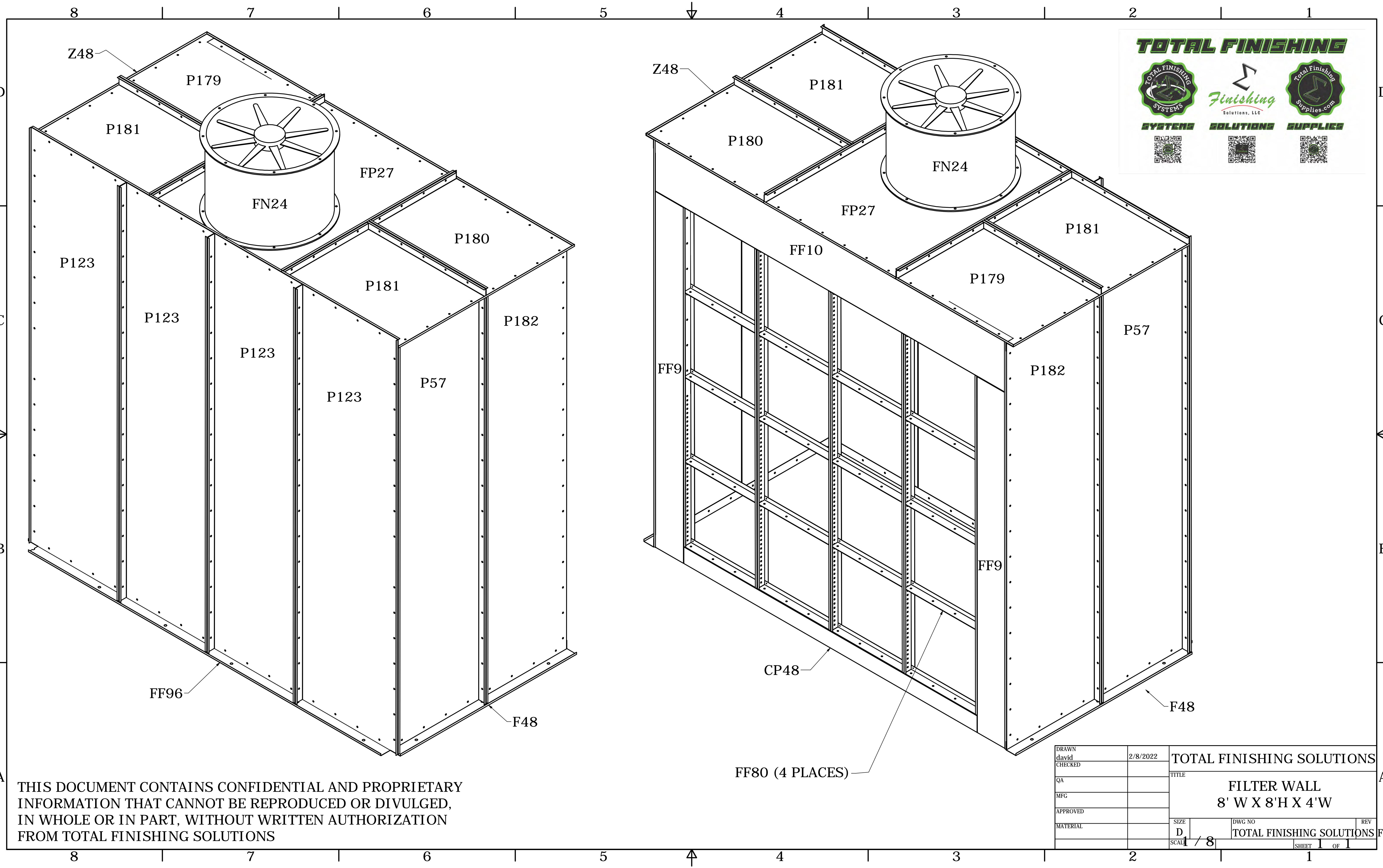


THIS DOCUMENT CONTAINS CONFIDENTIAL AND PROPRIETARY INFORMATION THAT CANNOT BE REPRODUCED OR DIVULGED, IN WHOLE OR IN PART, WITHOUT WRITTEN AUTHORIZATION FROM TOTAL FINISHING SOLUTIONS



| | | | | |
|----------|-------|-----------|---------------------------|---------------------------|
| DRAWN | david | 2/10/2022 | TOTAL FINISHING SOLUTIONS | |
| CHECKED | | | TITLE | |
| QA | | | FILTER WALL | |
| MFG | | | 8' W X 8'H X 4'W | |
| APPROVED | | | SIZE | DWG NO |
| MATERIAL | | | D | TOTAL FINISHING SOLUTIONS |
| | | | SCALE | 1/12 |
| | | | | REV |
| | | | | 1 |

8 7 6 5 4 3 2 1

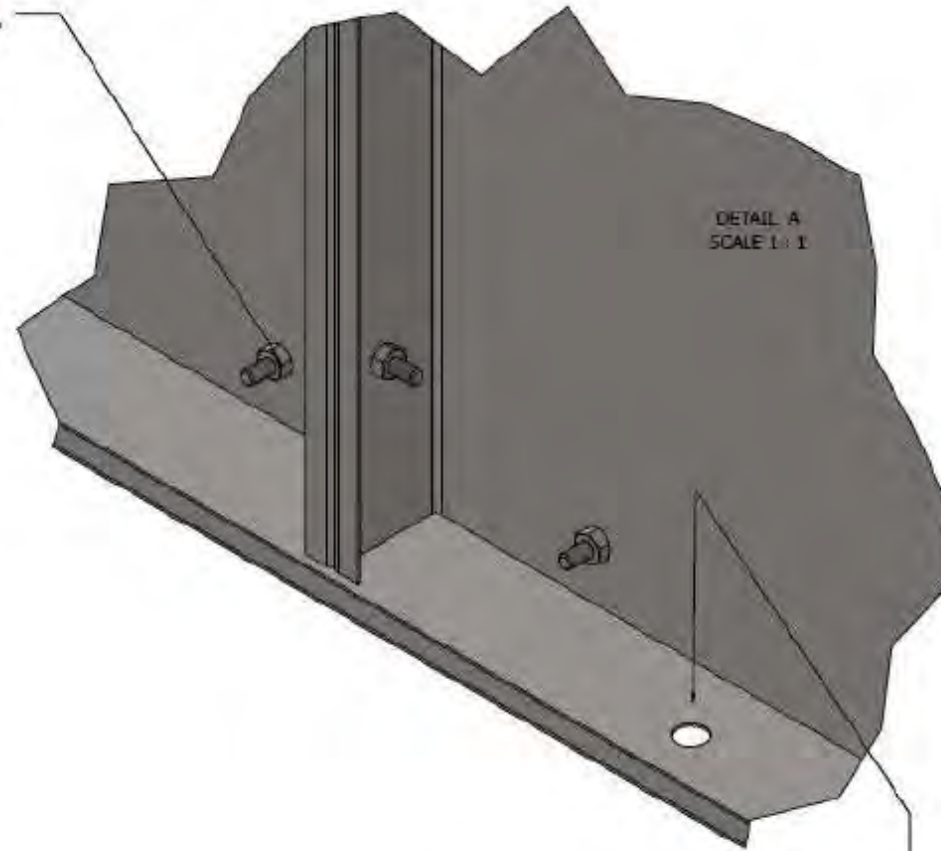


THIS DOCUMENT CONTAINS CONFIDENTIAL AND PROPRIETARY INFORMATION THAT CANNOT BE REPRODUCED OR DIVULGED, IN WHOLE OR IN PART, WITHOUT WRITTEN AUTHORIZATION FROM TOTAL FINISHING SOLUTIONS

| | | | | |
|----------|-------|----------|---------------------------|---------------------------|
| DRAWN | david | 2/8/2022 | TOTAL FINISHING SOLUTIONS | |
| CHECKED | | | TITLE | |
| QA | | | FILTER WALL | |
| MFG | | | 8' W X 8'H X 4'W | |
| APPROVED | | | SIZE | DWG NO |
| MATERIAL | | | D | TOTAL FINISHING SOLUTIONS |
| | | | SCALE | 1 / 8 |
| | | | | SHEET 1 OF 1 |

1/4-20 X 0.750 BOLT & NUT TYPICAL

**USE SELF TAPPING SCREWS WHERE
NO MATING 0.312 HOLE EXISTS.**



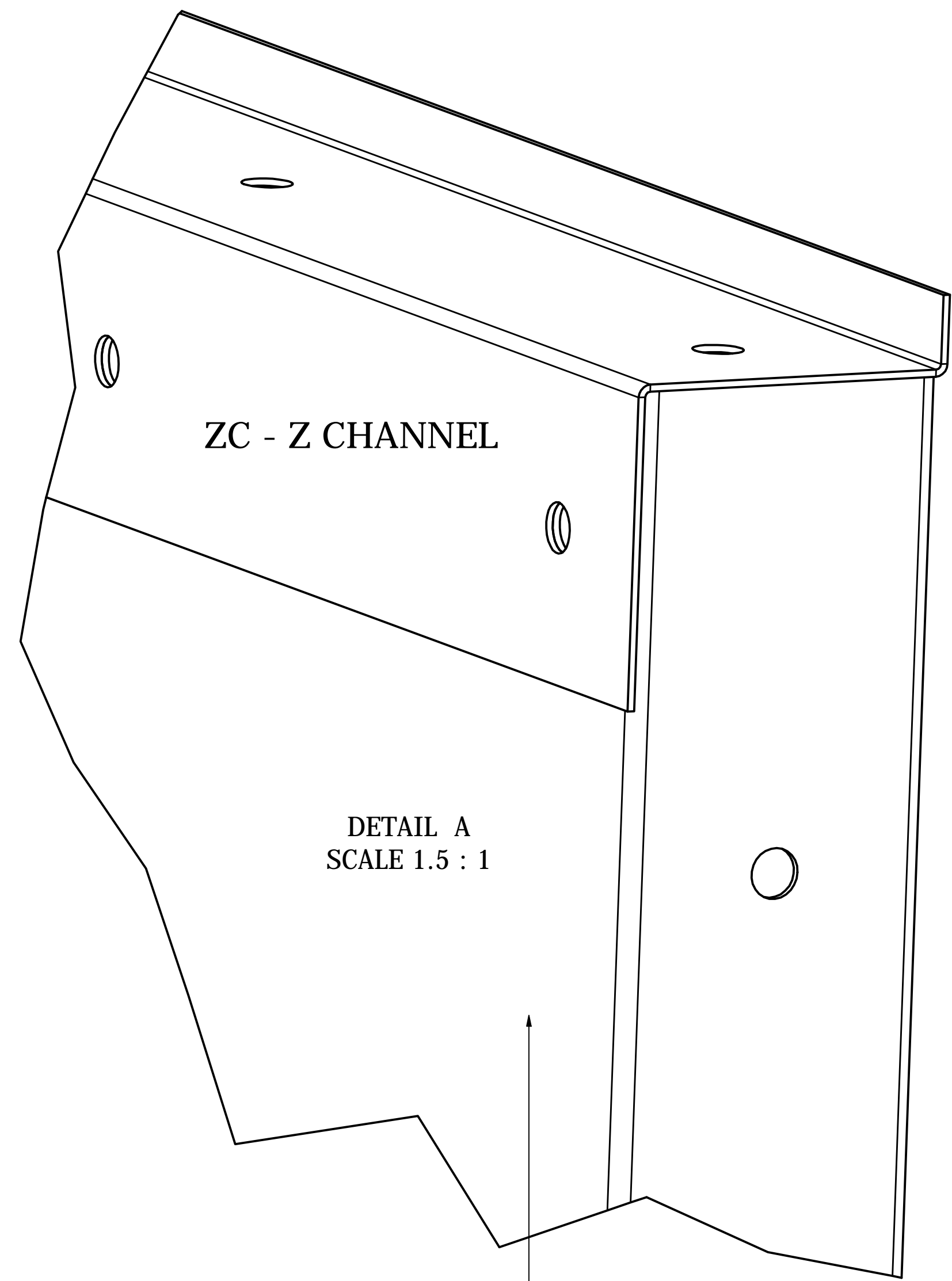
CONCRETE ANCHOR



SYSTEMS

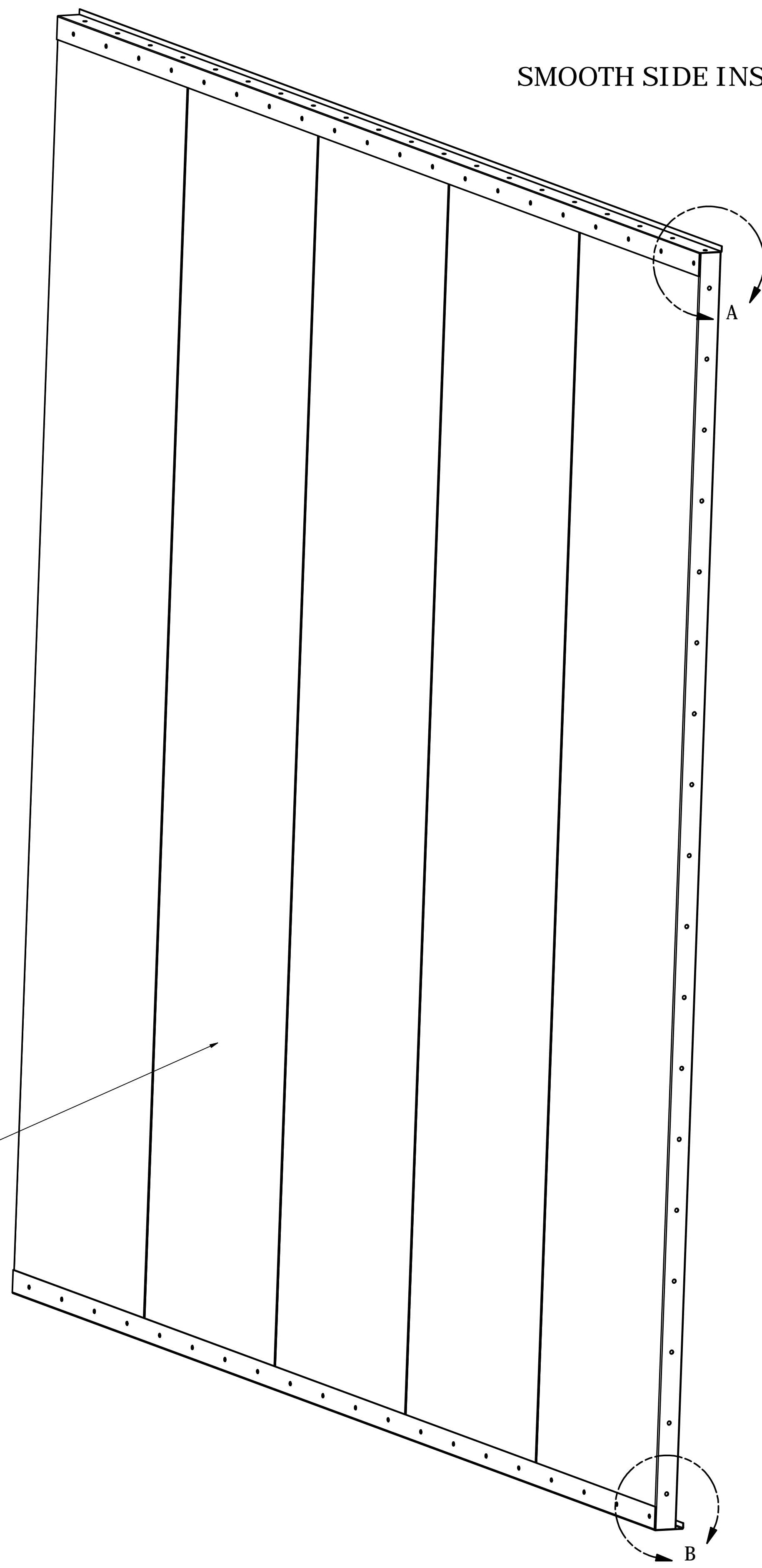
| | | | |
|----------|-----------|------------------------------|--------------------------------|
| DESIGN | 4/28/2018 | | |
| CHECKED | | TITLE | |
| QA | | TYPICAL SPRAY BOOTH ASSEMBLY | |
| MFG | | SIZE | D |
| APPROVED | | DRAW NO | VECTOR 27 DUAL INTAKE FILTER 1 |
| MATERIAL | | SCALE | 1/16" |
| | | | SHEET 2 OF 2 |

8 7 6 5 4 3 2 1



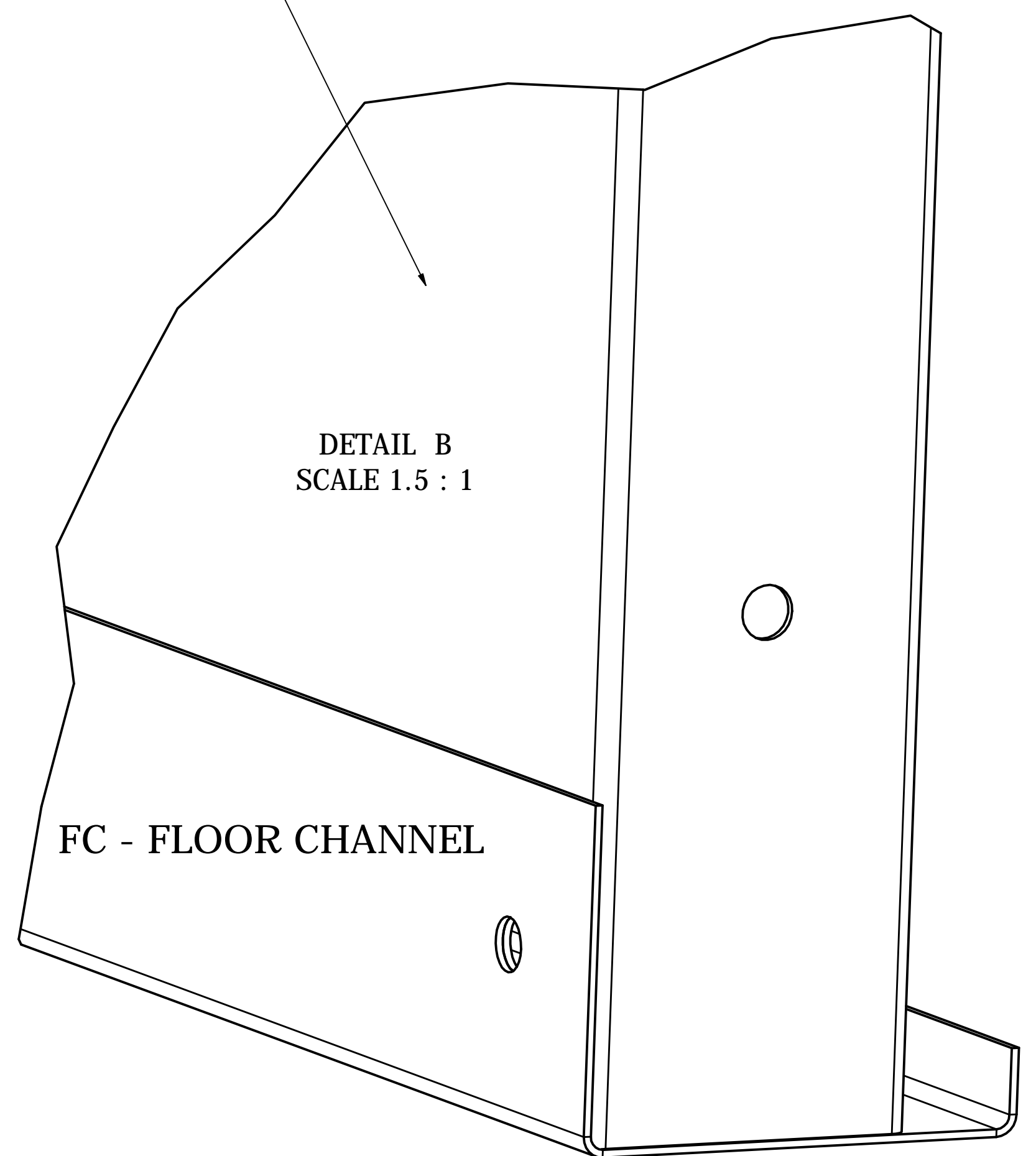
ZC - Z CHANNEL

DETAIL A
SCALE 1.5 : 1



SMOOTH SIDE INSIDE SPRAY BOOTH

SMOOTH SIDE INSIDE SPRAY BOOTH



FC - FLOOR CHANNEL

DETAIL B
SCALE 1.5 : 1

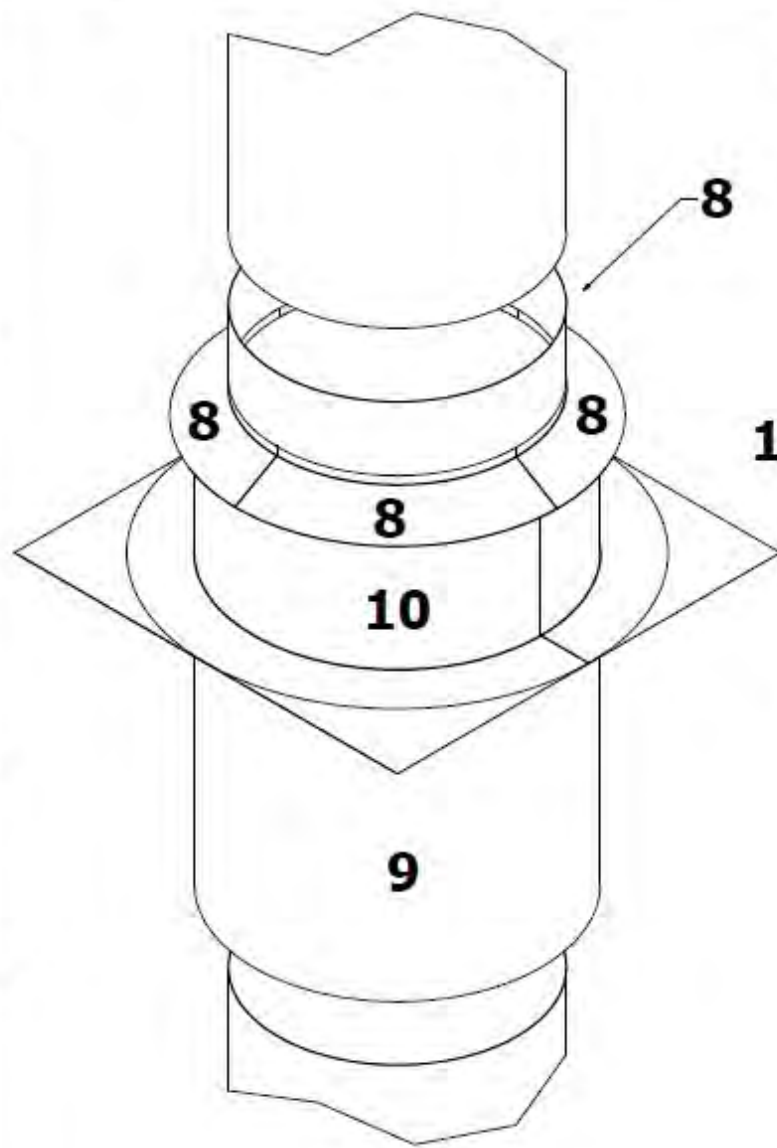
THIS DOCUMENT CONTAINS CONFIDENTIAL AND PROPRIETARY INFORMATION THAT CANNOT BE REPRODUCED OR DIVULGED, IN WHOLE OR IN PART, WITHOUT WRITTEN AUTHORIZATION FROM **TOTAL FINISHING SOLUTIONS**

TOTAL FINISHING

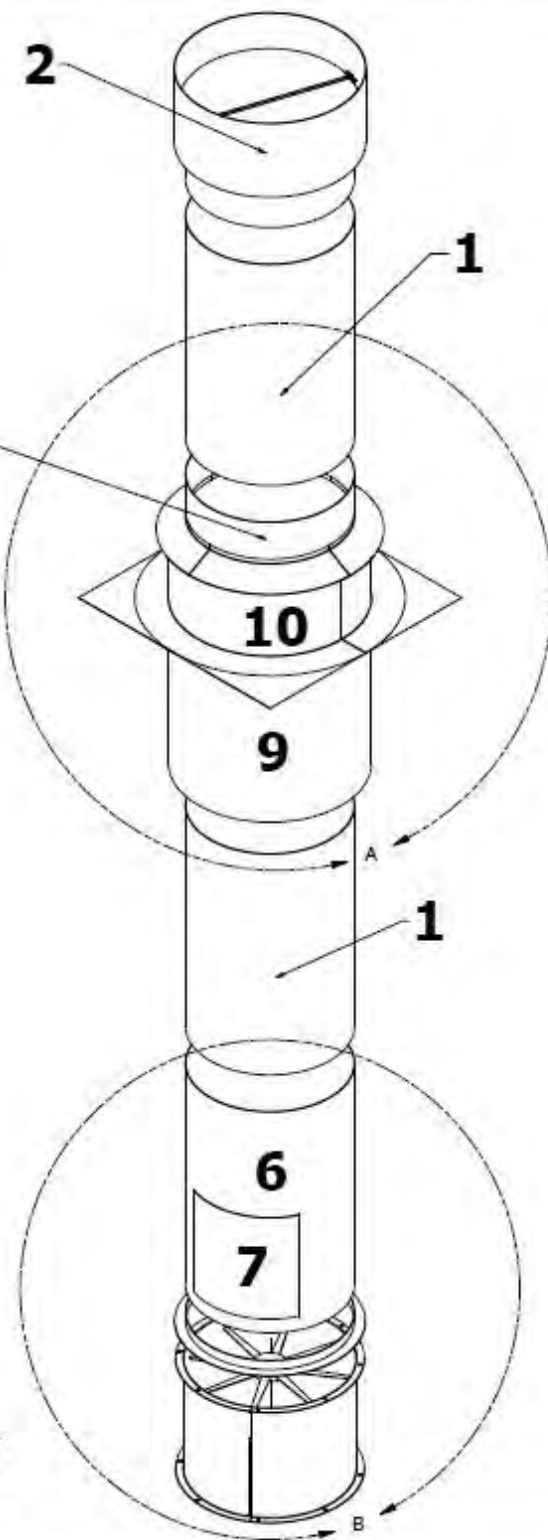
SYSTEMS SOLUTIONS SUPPLIES

| | | | | |
|----------|-------|------------|----------------------------------|--------------------------|
| DRAWN | david | 10/28/2021 | TOTAL FINISHING SOLUTIONS | |
| CHECKED | | | TITLE | |
| QA | | | ZC - Z CHANNEL | |
| MFG | | | FC - FLOOR CHANNEL | |
| APPROVED | | | ASSEMBLY | |
| MATERIAL | | | SIZE | DWG NO |
| | | | D | ZC & FC ASSEMBLY EXAMPLE |
| | | | SCALE | REV |
| | | | .15 | SHEET 1 OF 1 |

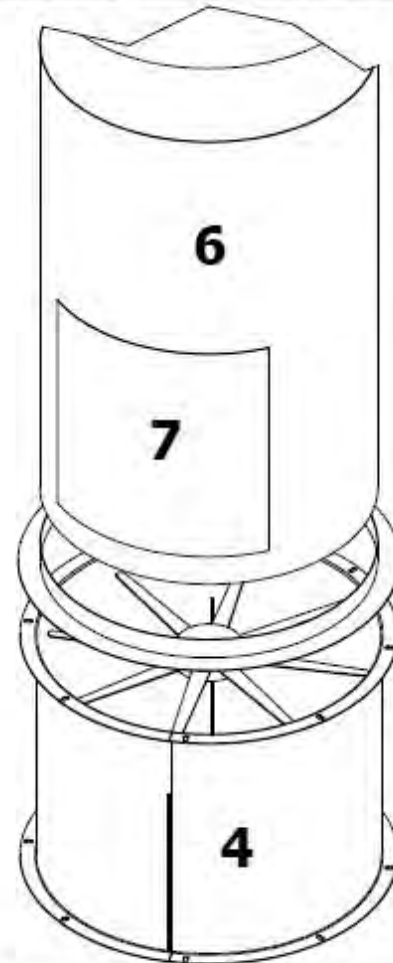
8 7 6 5 4 3 2 1



DETAIL A
SCALE 1 / 7



| PARTS LIST | | | | |
|------------|-----|--|--|-----------|
| ITEM | QTY | PART NUMBER | | EXTRA QTY |
| 1 | 2 | DUCT 48" LONG 20GA | | |
| 2 | 1 | DUCT DAMPER 24" HEIGHT 20GA | | |
| 3 | | 45 DEG ELBOW (ONLY IF REQUIRED) 20GA | | |
| | | | | |
| | | | | |
| | | | | |
| | | | | |
| | | | | |
| | | | | |
| | | | | |
| | | | | |
| | | | | |
| 4 | 1 | FAN | | |
| 5 | 1 | RING 2" HEIGHT | | |
| 6 | 1 | DUCT INSPECTION 48" LONG 20GA | | |
| 7 | 1 | DUCT INSPECTION COVER 20GA | | |
| 8 | 4 | DUCT QUARTER SECTION SKIRT (COLLAR) 20GA | | |
| 9 | 1 | (NOTE 2) DUCT FIRE WRAP DUCT DIAMETER + 2" - LENGTH 36" 20GA | | |
| 10 | 1 | DUCT FLASHING DUCT DIAMETER + 6" 20GA 15" HEIGHT | | |



- NOTES:
- 1) MALE (CRIMPED END) OF DUCT MUST BE UP & FEMALE END IS DOWN
 - 2) FIRE WRAP IS USED ON WOODEN ROOFS
 - 3) ALLOW 2" FOR EACH CONNECTION

DETAIL B
SCALE 1 / 7



SYSTEMS

| ORDER | | CUSTOMER | |
|----------|-----------|----------------|--------|
| DRAWN | 2/13/2021 | TITLE | |
| CHECKED | | DUCTING KIT | |
| QA | | REV | |
| MFG | | DWG NO | |
| APPROVED | | FAN & DUCT KIT | |
| MATERIAL | | SIZE | REV |
| | | D | |
| | | SCALE | SHEET |
| | | 1/14 | 1 of 1 |

THIS DOCUMENT CONTAINS CONFIDENTIAL AND PROPRIETARY INFORMATION THAT CANNOT BE REPRODUCED OR DIVULGED, IN WHOLE OR IN PART, WITHOUT WRITTEN AUTHORIZATION