

iCon-M233N SYSTEMS



FEATURES

- Versatile 30:1 ratio moves fluid at higher pressures while using low inlet pressure
- Anti-Blocking Changeover System prevents stalling for less downtime
- Compact size and weight of cart mount version is great for mobile operations
- Self-adjusting packings help protect the cylinder from wear as the packings are set in place
- All wetted parts are stainless steel to withstand solvent and waterborne coatings
- Patented air motor with double action pilot valve technologies work through the toughest shop conditions to provide the best reliability during operation
- Hard chrome plated internals create less friction for improved reliability
- Durable fluid valve seats made of carbide improve performance
- Designed to be extremely simple to assemble, disassemble, and maintain

iCon X-3 on Wall Mount
8.5(w) x 17(h) x 10(d) in



iCon X-3 on Cart Frame
16.25(w) x 38(h) x 19(d) in



TECHNICAL DATA

iCon-M233N

PRESSURE RATIO:		30:1
MAX. FLUID WORKING PRESSURE:		210 bar/3046 PSI
MAX. AIR INLET PRESSURE:		7.0 bar/102 PSI
AIR CONSUMPTION:		110 NI/min. at 30 cyc/min.
FLUID OUTPUT:	MAX. FLUID DELIVERY	25 ml
	MAX. VOLUME/MIN.	2.5 l/min.
MAX. NO. OF CYCLES PER MIN.		100 cyc
AIR SUPPLY NIPPLE (TO GUN)		G1/4"
AIR SUPPLY NIPPLE (TO PUMP)		G1/4"
FLUID SUPPLY NIPPLE (TO GUN)		NPSM 1/4"
FLUID INLET		G1/2"

MSG5-200 Series
Multi Spray Gun
and 513 Tip



25ft Twin Hose with High
Pressure Fluid Line and
Grounded Air Line



122

ANEST IWATA Americas, Inc.
COATING EQUIPMENT

SYSTEMS INCLUDE

- iCon X-3 Multi Spray Pump assembled on a cart frame or wall mount
- MSGS-200 Series Multi Spray Gun and 513 tip
- Suction Hose or 6L Hopper (both with 50 mesh filter)
- 25ft Twin Hose with High Pressure Fluid Line and Grounded Air Line

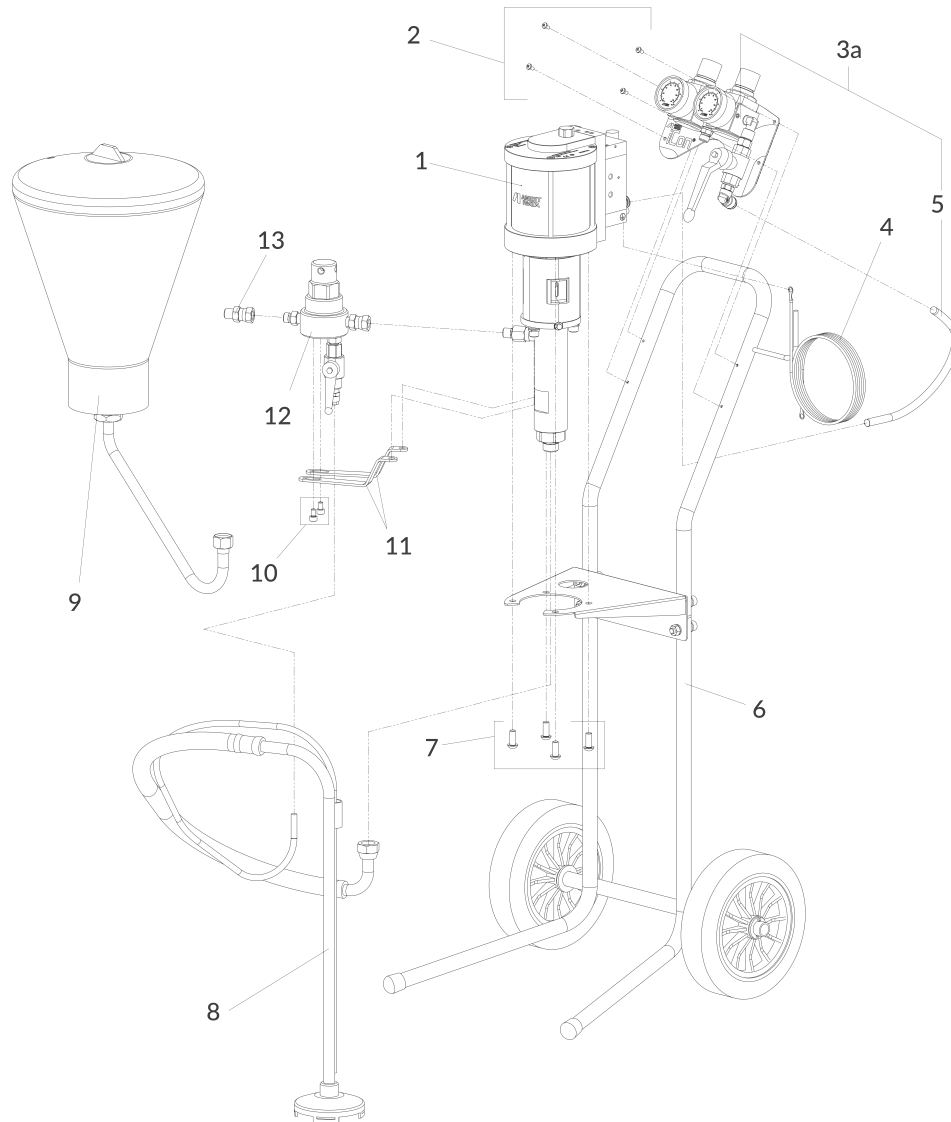


ORDER Information

Code	Model	Ratio	Fluid Output		Type	Max. Fluid Press.	Gun Model	Type Of Filter	Twin Hoses
iCon-M233N MULTI SPRAY PUMP on CART FRAME WITH MSGS-200 Multi Spray Gun and 513 Tip									
140004A0-T	ICON-M233N-S2	30:1	25 ml	2.5 l/min.	SUCTION HOSE SET	210 bar/3046 PSI	MSGS 200 EVO -250SN	SHORT - 100 Mesh	PN: 9249 (25ft)
140009A0-T	ICON-M233N-H2				6L HOPPER SET				
iCon-M233N MULTI SPRAY PUMP on WALL MOUNT WITH MSGS-200 Multi Spray Gun and 513 Tip									
140016A0-T	ICON-M233N-SWM2	30:1	25 ml	2.5 l/min.	SUCTION HOSE SET	210 bar/ 3046 PSI	MSGS 200 EVO -250SN	SHORT - 100 Mesh	PN: 9249 (25ft)
140021A0-T	ICON-M233N-HWM2				6L HOPPER SET				

Code	Description
ACCESSORIES	
9249	25ft Twin Hose
9248	50ft Twin Hose

ICON-M233N SYSTEMS



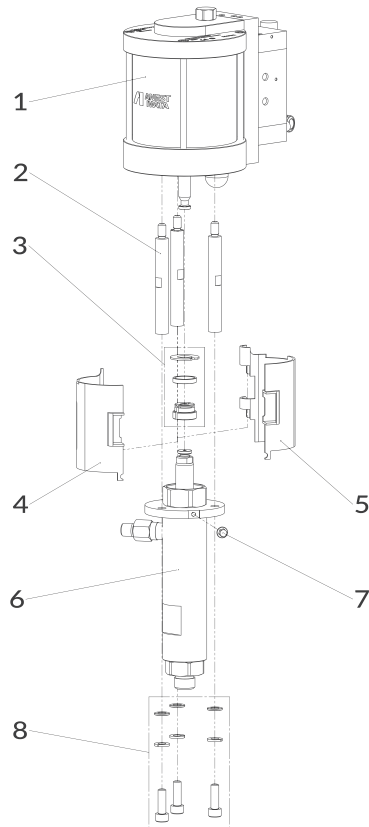
SPARE PARTS

Ref.	Code	Description
1	-	PLUNGER PUMP (PP-3025N)
2	94444790	SOCKET BUTTON HEAD SCREW (4 pcs)
3a	940188A0	AIR REGULATOR SET for CART FRAME version
3b	940189A0	AIR REGULATOR SET for WALL MOUNT version
4	ME100001	GROUND WIRE SET
5	940157A0	AIR HOSE 0,3 m
6	940085A0	CART FRAME
7	960055A0	HEX. SOCKET BUTTON HEAD SCREW M8x20 SET (4 pcs)
8	0101010000	SUCTION HOSE SET
8	ITDA-55G90	SUCTION HOSE SET - 55 GALLON
9	04005510	HOPPER SET 6 lt.
10	960056A0	HEX. SOCKET BOLT M6x10 SET (2 pcs)
11	940052A0	FILTER STAY
12	140002A0	DELIVERY PAINT FILTER SET TF-1S
13	94006030	ADAPTER G1/4" F - NPSM 1/4" M
14	940192A0	WALL MOUNT SUPPORT
15	940060A0	AIR HOSE 0,5 m
	940213A0	AIR EXTENTION HOSE KIT



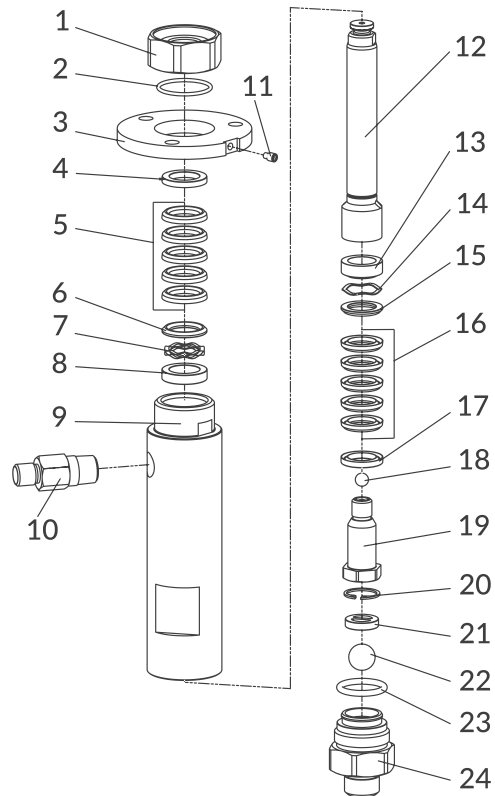
AIR OPERATING VALVE

Ref.	Code	Description
1	940000A0	AIR MOTOR
2	940036A0	CONNECTING ROD
3	940193A0	COUPLING KIT
4	940093A0	ROD COVER LEFT
5	940094A0	ROD COVER RIGHT
6	940014A0	FLUID PUMP SET
7	960047A0	HEX. SOCKET FLANGE BOLT M5x12
8	940170A0	SCREWS & WASHERS SET (3+3+3 pcs.)



FLUID PUMP SET

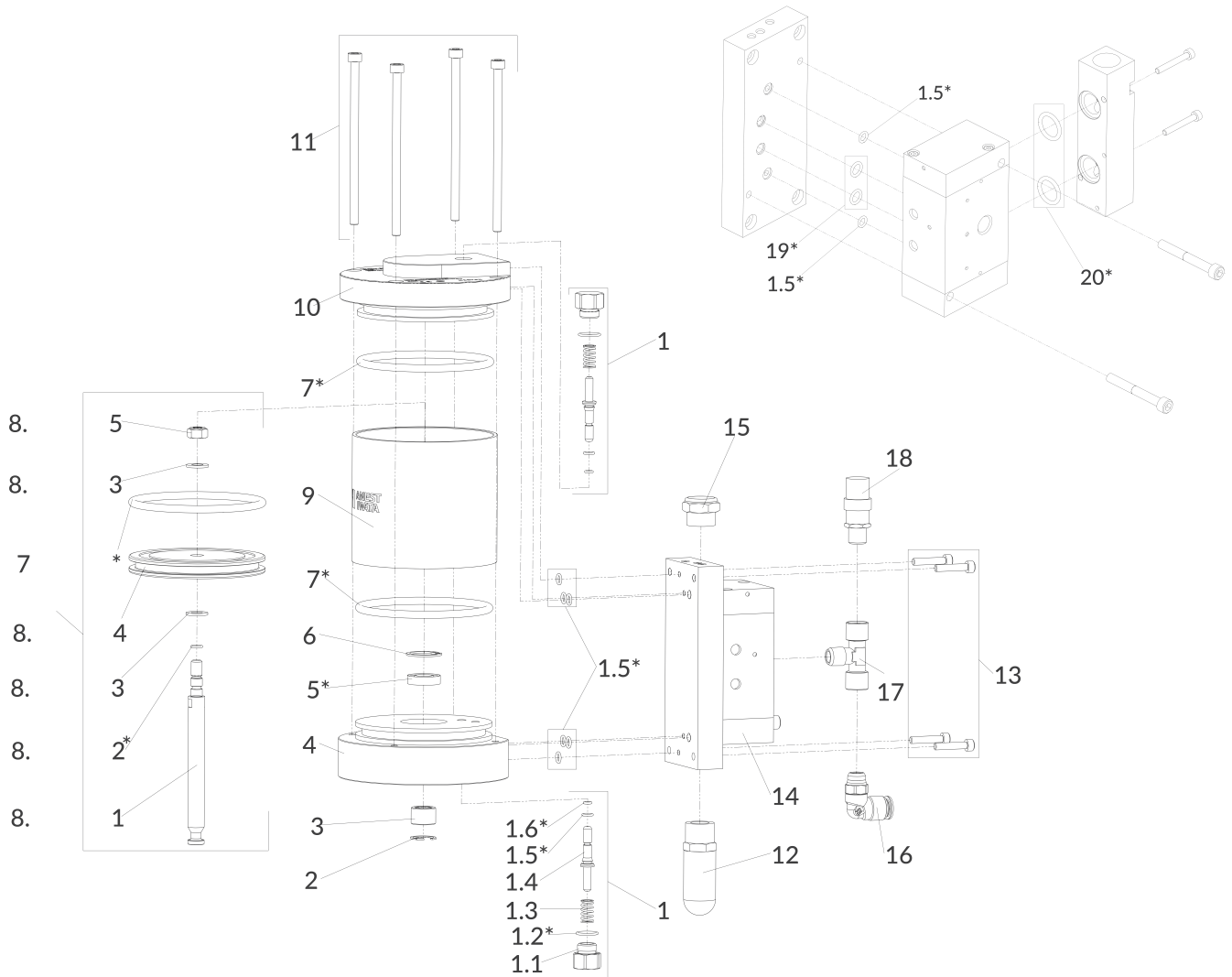
Ref.	Code	Description
1	940031A0	PACKING HOLDER
2	960011A0	O-RING 2.0-29.5
3	940112A0	FLANGE
4	940126A0	V-PACKING FEMALE ADAPTOR (UPPER)
5	940069A0	V-PACKING SET (UPPER) (3 PE + 2 PTFE)
6	940123A0	V-PACKING MALE ADAPTOR (UPPER)
7	940122A0	MULTI WAVE SPRING
8	940121A0	SPRING HOLDER (UPPER)
9	940015A0	SUCTION TUBE
10	940032A0	FLUID OUTPUT JOINT
11	960040A0	PLUG
12	940166A0	SUCTION ROD
13	940127A0	SPRING HOLDER (LOWER)
14	940128A0	NESTED SPRING
15	940129A0	V-PACKING MALE ADAPTOR (LOWER)
16	940070A0	V-PACKING SET (LOWER) (3 PE + 2 PTFE)
17	940132A0	V-PACKING FEMALE ADAPTOR (LOWER)
18	96662025	BALL 5/16"
19	940021A0	VALVE HOLDER
20	960014A0	SEEGER 20
21	04944770	VALVE HOLDER PACKING
22	96662050	BALL 5/8"
23	960015A0	O-RING 3.53-23.39
24	940033A0	VALVE ADAPTOR



FLUID PUMP SET ACCESSORIES

Ref.	Code	Description
	7964	FLUID MAINTENANCE KIT (includes: 2, 4, 5, 6, 7, 9, 14, 15, 16, 17, 18, 20, 21, 22)

ICON-M233N SYSTEMS



AIR MOTOR SET

Ref.	Code	Description
1	940073A0	PILOT VALVE SET
1.1	940007A0	PILOT VALVE CAP
1.2*	96997009	O-RING ϕ 1.5-13.5
1.3	940006A0	PILOT VALVE SPRING
1.4	940005A0	PILOT VALVE SHAFT
1.5*	96997003	O-RING ϕ 1,5-5,5
1.6*	96997012	O-RING ϕ 1.5-3.5
2	960000A0	SEEGER 18
3	940002A0	METAL
4	940001A0	BOTTOM MODULE
5*	960001A0	U-PACKING
6	960002A0	SEEGER 24
7*	960004A0	O-RING ϕ 5.33-89.69
8	940065A0	PISTON ROD SET
8.1	940159A0	PISTON ROD
8.2*	960052A0	O-RING ϕ 1.5-6
8.3	06363080	WASHER

Ref.	Code	Description
8.4	940004A0	AIR PISTON
8.5	960003A0	SELF LOCKING HEX. NUT
9	940008A0	CYLINDER
10	940010A0	HEAD MODULE
11	960006A0	HEX. SOCKET BOLT M6x120
12	960010A0	MUFFLER
13	96350525	HEX. SOCKET BOLT M5x25
14	940174A0	AIR OPERATING VALVE
15	04447820	EXHAUST FILTER
16	UL300309	ELBOW UNION
17	UL30030000	T-JOINT
18	UL30036000	SAFETY VALVE
19*	060031A0	O-RING ϕ 1.78-7.65
20*	060008A0	O-RING ϕ 2.62-15.54
	940072A0	O-RING SET FOR AIR MOTOR & AIR OPERATING VALVE

(*) Spare parts included in 'O' Ring Set



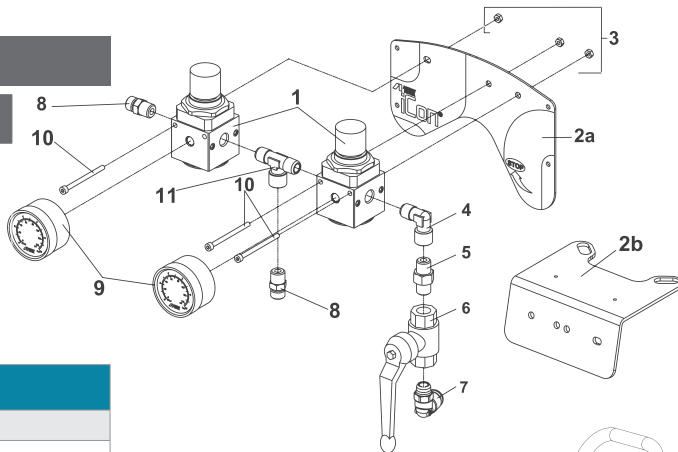
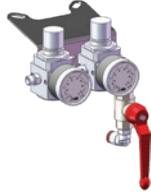
126

ANEST IWATA Americas, Inc.
COATING EQUIPMENT

AIR REGULATOR SET

For CART FRAME Version

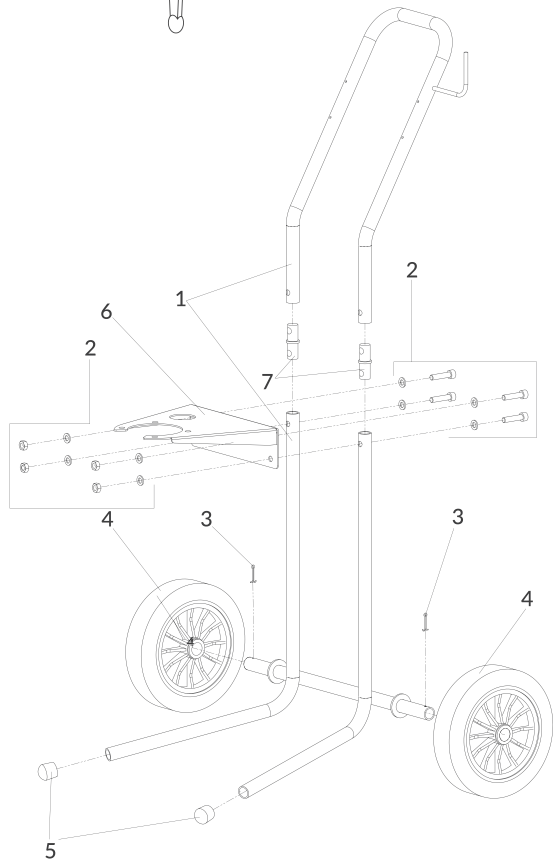
For WALL MOUNT Version



Ref.	Code	Description
1	UI00070001	AIR REGULATOR
2a	940156A0	PANEL (for Cart Frame version)
2b	UL00005201	PLATE FOR AIR REGULATOR (for Wall Mount version)
3	UL300700	HEX. NUT M4
4	UL300201	L-JOINT
5	UL300101	NIPPLE
6	UL30034901	BALL VALVE WITH EXHAUST HOLE
7	UL300309	ELBOW UNION
8	UL30010501	SPECIAL NIPPLE R1/4" - G1/4"
9	02004003	PRESSURE GAUGE (bar - psi)
10	06350455	BOLT WITH HEX. HOLE M4x55
11	UL300303	T-JOINT

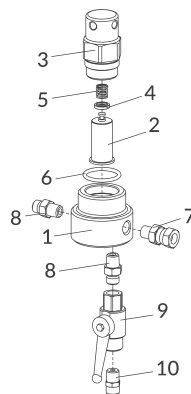
CART FRAME SET

Ref.	Code	Description
1	940113A0	CART FRAME STRUCTURE
2	940169A0	SCREWS, NUTS & WASHER SET (4+4+8 pcs.)
3	UL300811	SPLIT PIN
4	UL200001	WHEEL
5	960019A0	RUBBER CAP
6	940192A0	WALL MOUNT SUPPORT
7	940089A0	CONNECTION ELEMENT



DELIVERY PAINT FILTER TF-1S

Ref.	Code	Description
1	940053A0	FILTER BODY
2	VFM2704	FILTER 100 MESH
3	940054A0	CYLINDER
4	940055A0	WASHER
5	940056A0	FILTER SPRING
6	960021A0	O-RING 3.53-32.92
7	96859022	SWIVEL JOINT R1/4"M - G1/4"F
8	UL300462	JOINT G1/4" - R1/4"
9	UL30090100	DRAIN VALVE
10	UL300302	HOSE JOINT



SUCTION HOSE SET

Ref.	Code	Description
4	UL10000701	COMPLETE COVER SET
4-1	0040720100	FILTER 50 MESH
4-2	00407203	FILTER STOPPER
	9014	SUCTION FILTER SS

