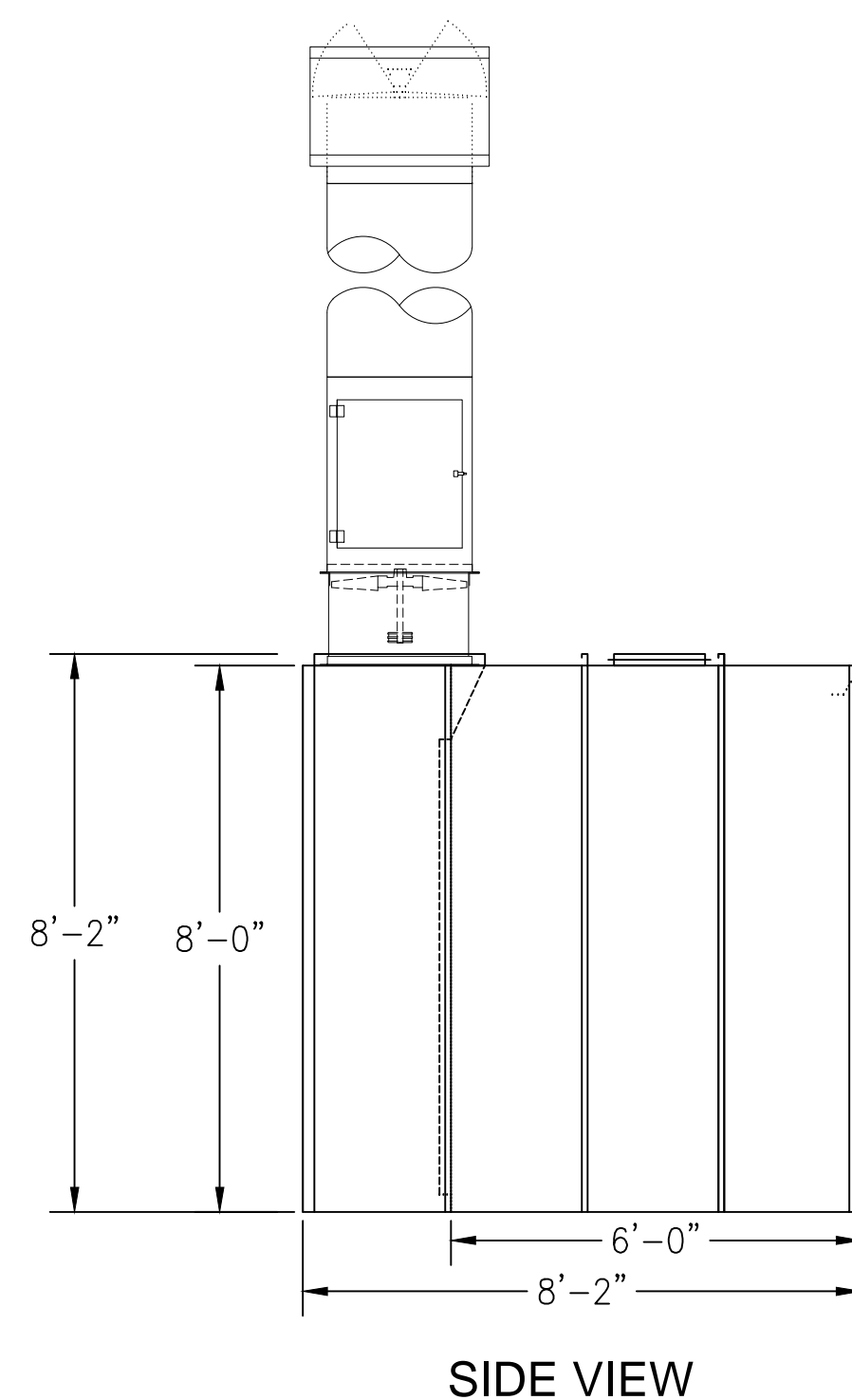
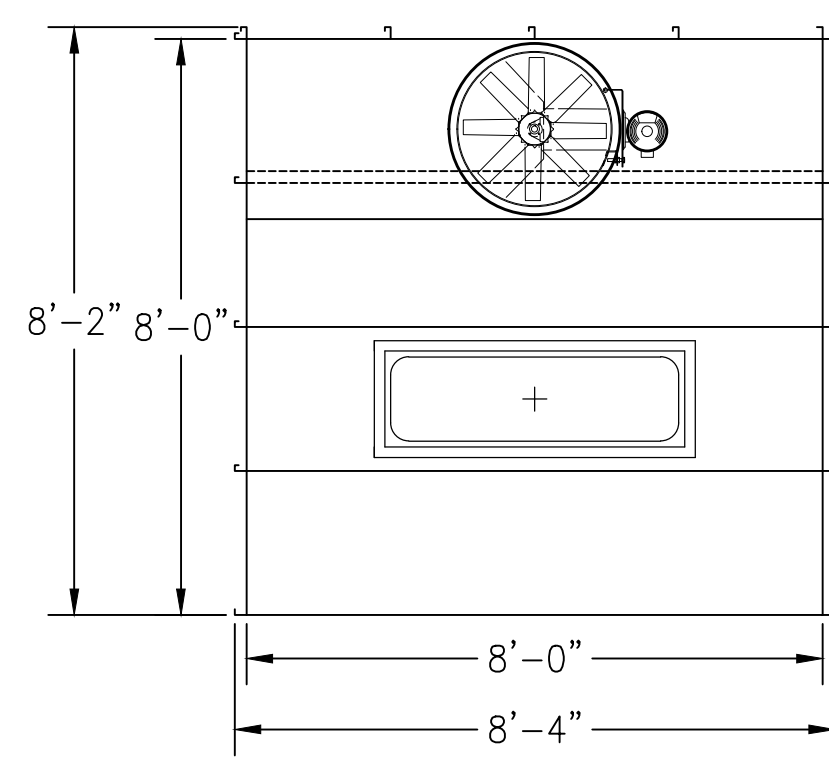


FRONT VIEW



SIDE VIEW



TOP VIEW

BOOTH SPECIFICATIONS

- * MODEL: EIBF88 FLOOR FILTER BOOTH, OPEN FACE-ETL LISTED
- * LENGTH= 8'-2" O.D. / 6'-0" I.D.
- * WIDTH= 8'-4" O.D./ 8'-0" I.D.
- * HEIGHT= 9'-0" O.D. / 8'-0" I.D.

EXHAUST SPECIFICATIONS

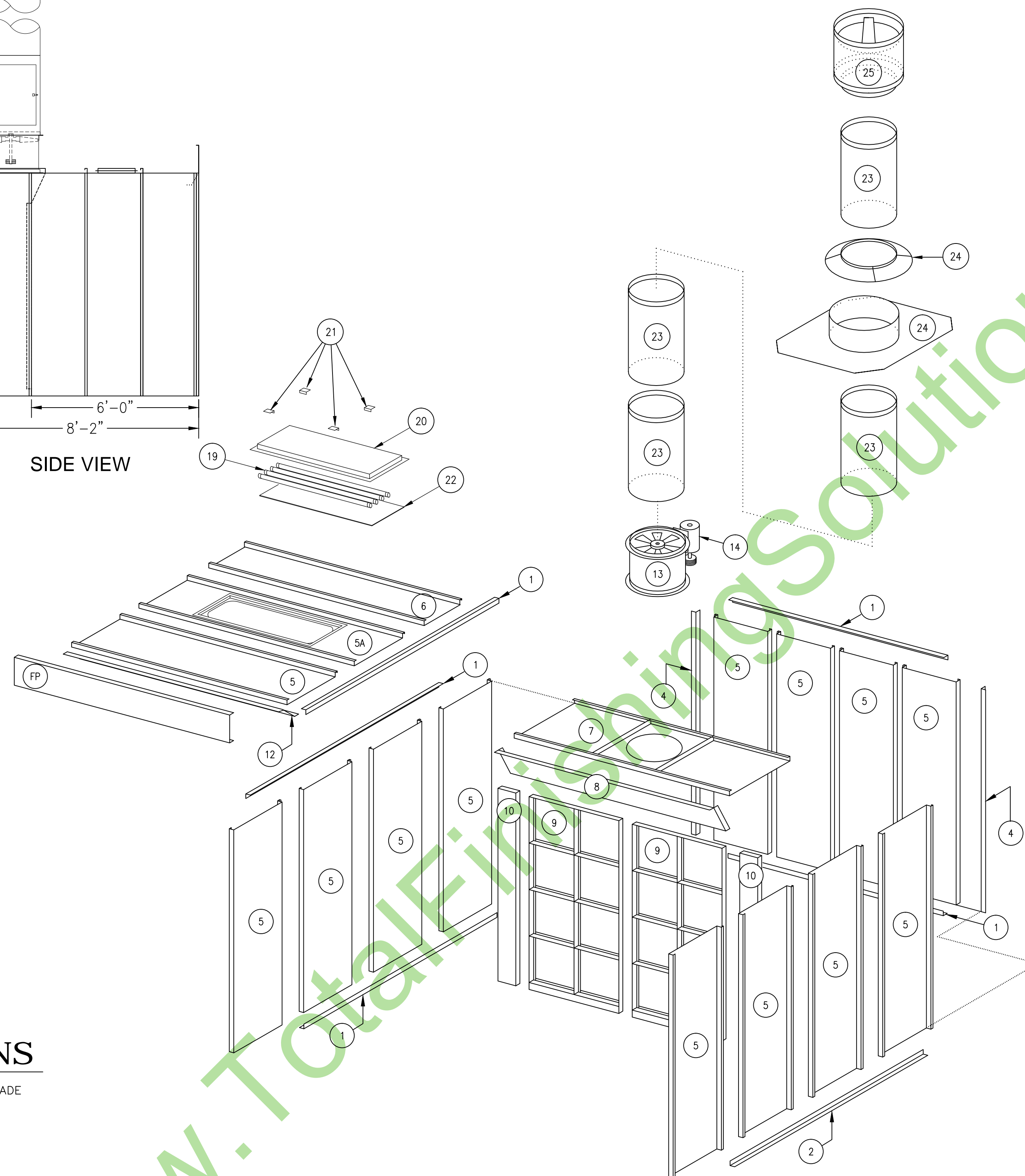
- * EXHAUST FAN TYPE: 1-EACH 25 1/2" DIAMETER NON-SPARKING BLADE
- * MOTOR TYPE: 1-2HP./3-PHASE.
- * VOLTAGE= 230VAC 3-PHASE 60HZ
- * C.F.M. RATING= Total 6,400 @ 1/2" STATIC PRESSURE
- * EXHAUST CELLS= (16) 20" X 20" X 2" FIBERGLASS ARRESTORS
- * ONE MANOMETER ONE MAGNETIC AIR VALVE
- * ONE MANUAL CONTROL PANEL MODEL: CP1

CONSTRUCTION

- * "SINGLE WALL" 18 GA. G-90 GALVANIZED STEEL PANELS
- * BASE AND TIE-IN ANGLE 14 GA. G-90 GALVANIZED STEEL
- * SUPPORT CHANNEL 12 GA. G-90 GALVANIZED STEEL
- * PANEL ASSEMBLY TYPE= 1/4" X 3/4" SELF-TAPPING SCREWS ON 10" CENTERS TYP.

LIGHTING SPECIFICATIONS

- * TYPE = OPEN TYPE 4-TUBE FLUORESCENT
- * VOLTAGE= STANDARD: 120 VOLT
- * QUANTITY= 1-EA. TOTAL.



ALL PANELS ARE CONSTRUCTED OF 18GA (0.0478") GALVANIZED STEEL. ALL ANGLES ARE CONSTRUCTED OF 14GA (0.0747") GALVANIZED STEEL. SUPPORT STRUCTURES (C-CHANNELS, I-BEAMS, ETC.) ARE CONSTRUCTED OF 12GA (0.1046") GALVANIZED UNLESS STATED OTHERWISE.

AFC SPRAY BOOTHS ARE CONSTRUCTED TO THE STANDARDS OF THE NATIONAL FIRE PROTECTION AGENCY (NFPA-33), OCCUPATIONAL HEALTH AND SAFETY ADMINISTRATION (OHSA), AND ENVIRONMENTAL PROTECTION AGENCY (EPA).



Intertek

53993
 SPRAY APPLICATIONS
 USING FLAMMABLE
 AND COMBUSTIBLE
 MATERIALS
 CONFORMS TO NFPA STD.33

REV.	DESCRIPTION	DATE	BY



THIS DRAWING IS THE PROPERTY OF TOTAL FINISHING SOLUTIONS, LLC AND IS NOT TO BE LOANED, COPIED, OR DUPLICATED UNLESS IN DIRECT CONNECTION WITH TOTAL FINISHING SOLUTIONS, LLC. ALL RIGHTS RESERVED. THIS DRAWING MUST BE RETURNED UPON REQUEST BY TOTAL FINISHING SOLUTIONS, LLC.

DRAWN FOR:			
DESCRIPTION: FLOOR FILTER BOOTH MODEL: EIBF88 ASSEMBLY/ELEVATION			
DRAWN BY: J.BARTON	CHECKED BY:	APPROVED BY:	DATE: 06/12/17
INSTALLED BY:	FIELD CHANGED BY:	SCALE: 3/8"=1"	DRAWING NAME: EIBF88X6DP ASSEMBLY