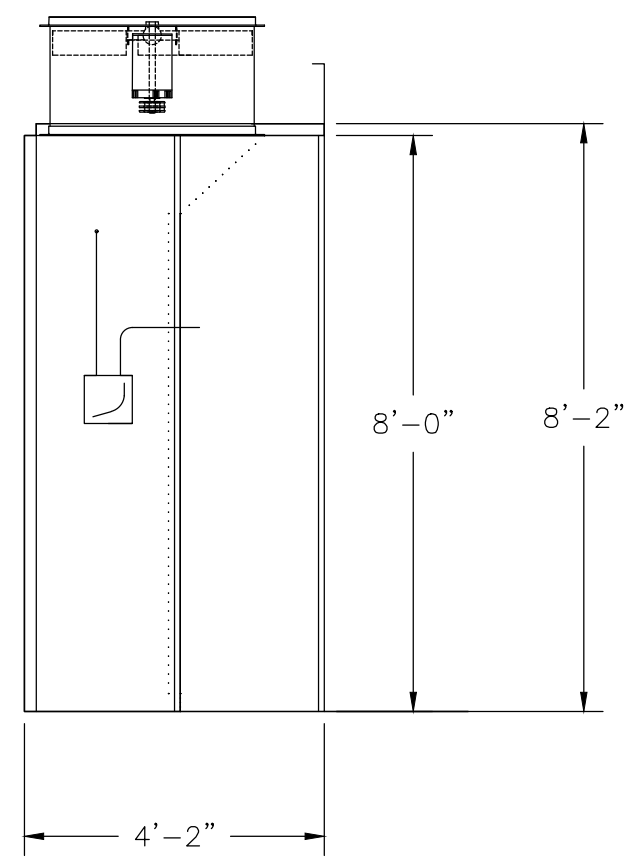
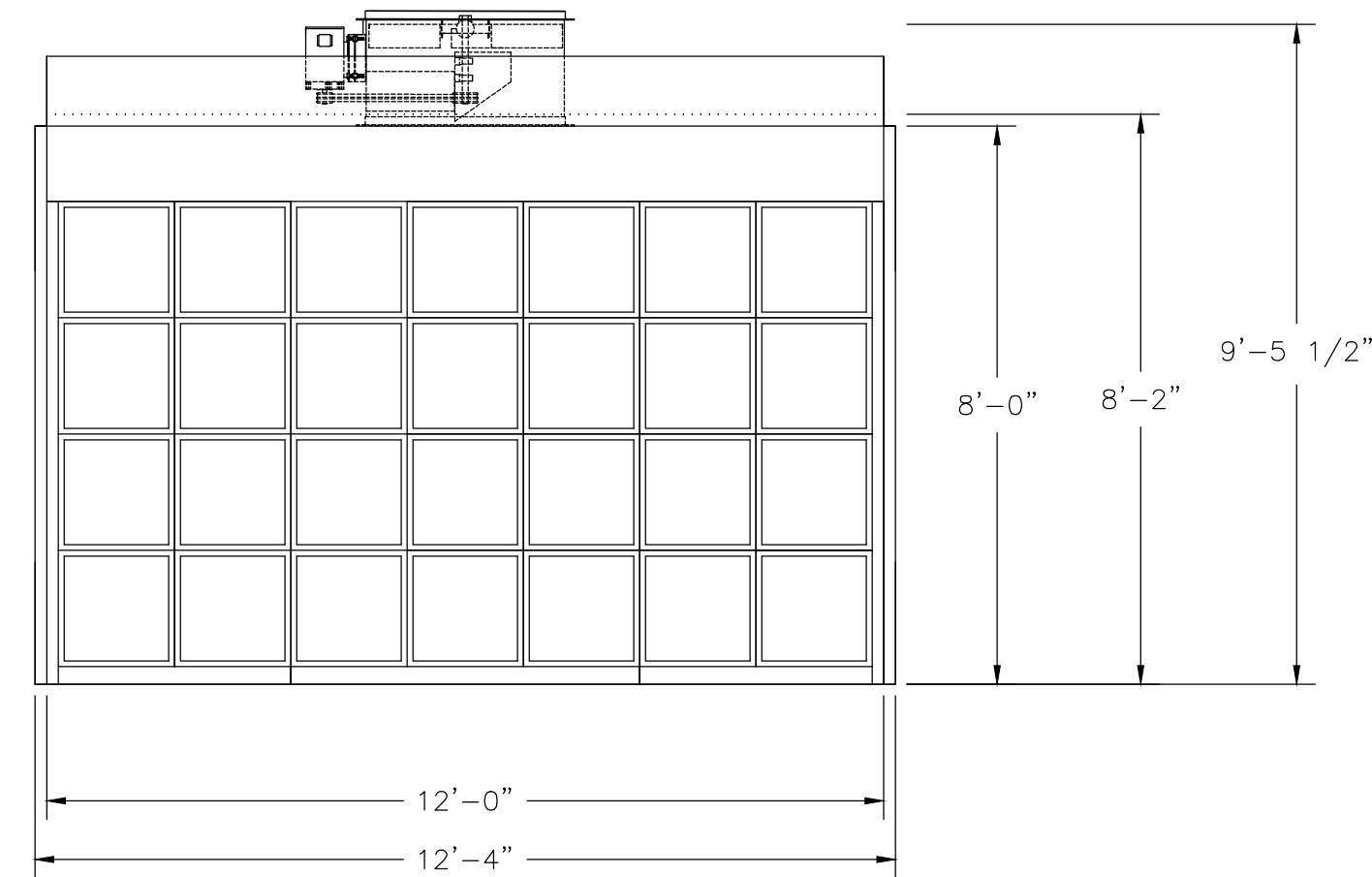


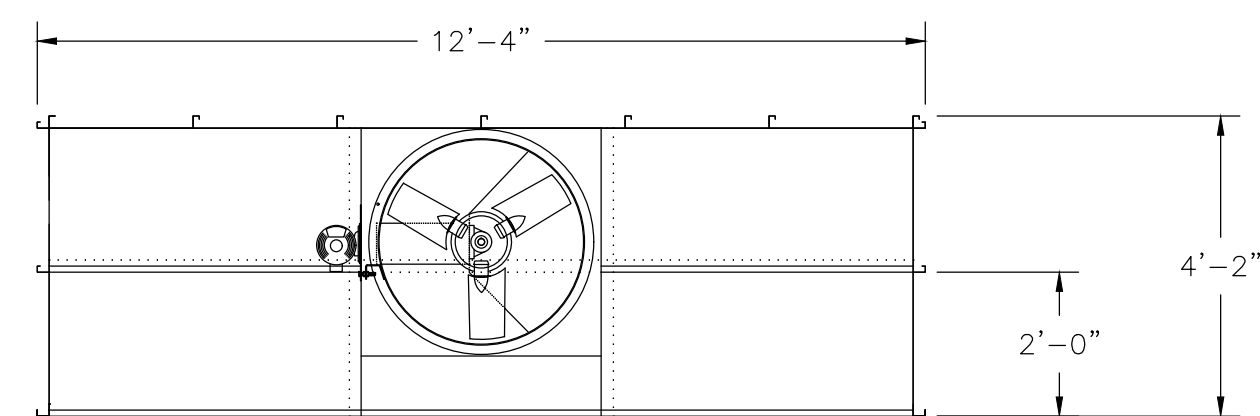
EXHAUST CHAMBER MODEL: EC128



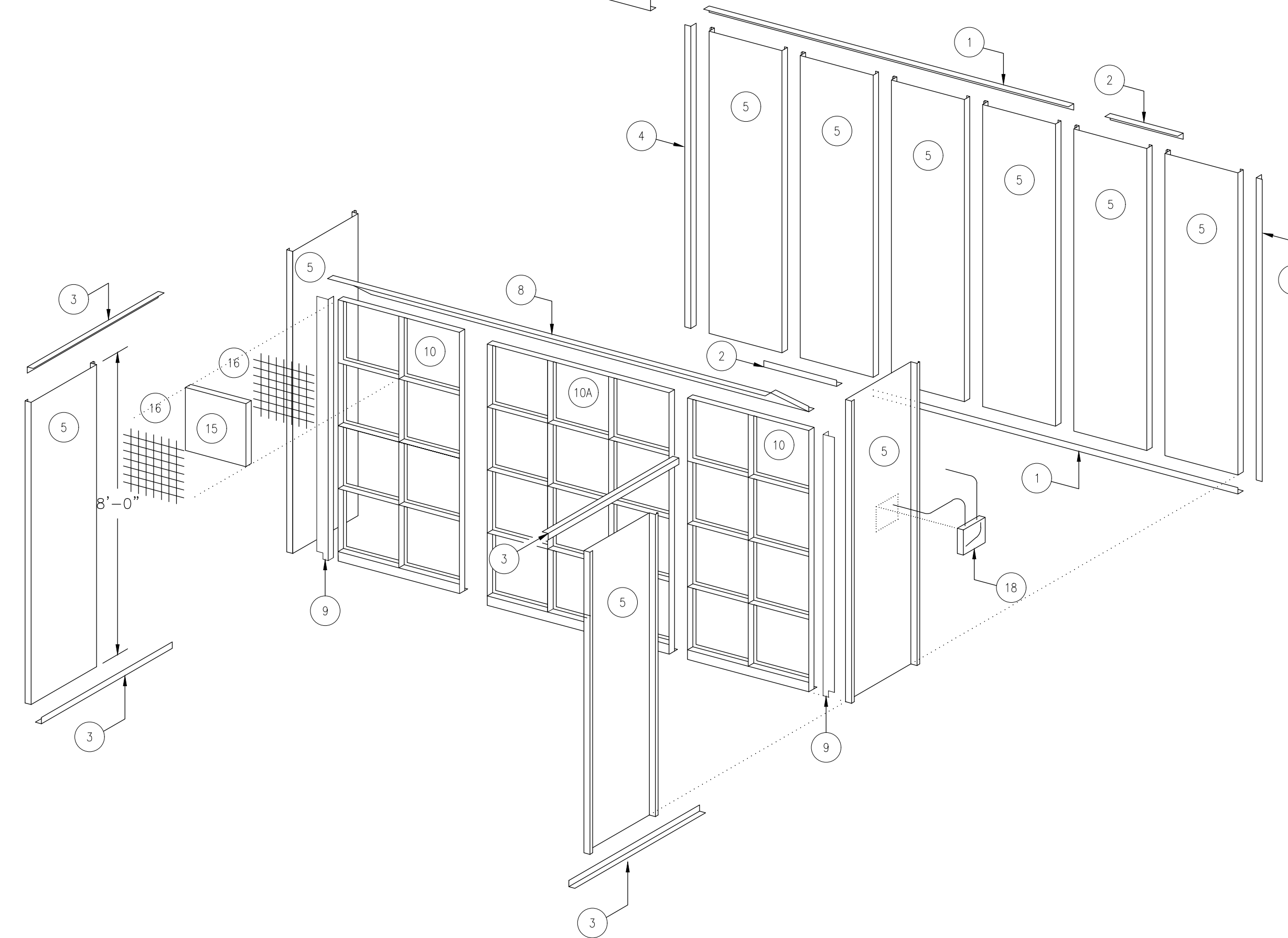
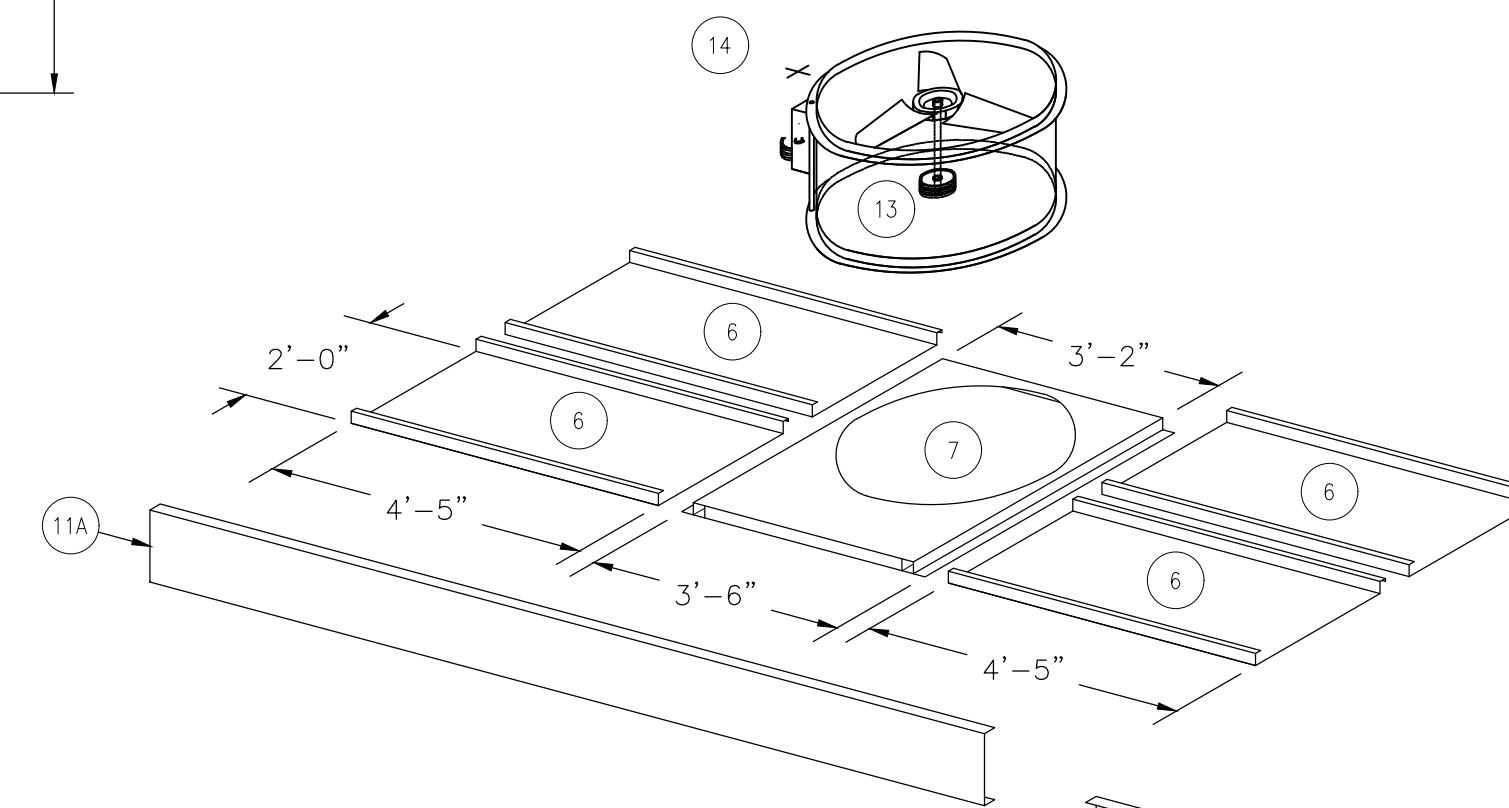
SIDE VIEW



FRONT VIEW



TOP VIEW



BOOTH SPECIFICATIONS

- * MODEL= EIBF128 FLOOR FILTER BOOTH, OPEN FACE-ETL LISTED
- * LENGTH= 8'-2" O.D. / 6'-0" I.D.
- * WIDTH= 12'-4" O.D. / 12'-0" I.D.
- * HEIGHT= 9'-0" O.D. / 8'-0" I.D.

EXHAUST SPECIFICATIONS

- * EXHAUST FAN TYPE= 1-EACH 34" DIAMETER NON-SPARKING BLADE
- * MOTOR TYPE= 1-2HP./3-PHASE.
- * VOLTAGE= 230VAC 3-PHASE 60HZ
- * C.F.M. RATING= Total 1,100 @ 1/2" STATIC PRESSURE
- * EXHAUST CELLS= (28) 20" X 20" X 2" FIBERGLASS ARRESTORS
- * ONE MANOMETER ONE MAGNETIC AIR VALVE
- * ONE MANUAL CONTROL PANEL MODEL: CP1

CONSTRUCTION

- * "SINGLE WALL" 18 GA. G-90 GALVANIZED STEEL PANELS
- * BASE AND TIE-IN ANGLE 14 GA. G-90 GALVANIZED STEEL
- * SUPPORT CHANNEL 14 GA. G-90 GALVANIZED STEEL
- * PANEL ASSEMBLY TYPE= 1/4" X 3/4" SELF-TAPPING SCREWS ON 10" CENTERS TYP.

REV.	DESCRIPTION	DATE	BY



Total Finishing Solutions, LLC
770 SE OPAL CT, HERMISTON, OR 97838
Phone: (503) 753-5131
http://www.totalfinishing.com email: ty@totalfinishing.com

THIS DRAWING IS THE PROPERTY OF TOTAL FINISHING SOLUTIONS, LLC AND IS NOT TO BE LOANED, COPIED OR DUPLICATED UNLESS IN DIRECT CONNECTION WITH TOTAL FINISHING SOLUTIONS, LLC. ALL RIGHTS RESERVED. THIS DRAWING MUST BE RETURNED UPON REQUEST BY AFC FINISHING SYSTEMS.

DRAWN FOR:			
DESCRIPTION: EXHAUST CHAMBER MODEL: EC128			
DRAWN BY: J.BARTON	CHECKED BY:	APPROVED BY:	DATE: 06/17/2021
INSTALLED BY:	FIELD CHANGED BY:	SCALE: 3/8"=1'	DRAWING NAME: EC128-ASSEMBLY