



H35 Side Rigid MOLLE Panel Kit

DSL.H35.10100

Thank you for choosing DrySpec

We know you would rather be riding your bike than wrenching on it, so we go the extra mile to make sure our instructions are clear and as easy to understand as possible. If you have any questions, comments, or suggestions don't hesitate to give our gear experts a call at 401.360.2551 or visit WWW.DRYSPEC.COM

Please Read Before Installing

DRYSPEC products should always be installed by a qualified motorcycle technician. If you are unsure of your ability to properly install a product, please have the product installed by your local motorcycle dealer. DENALI takes no responsibility for damages caused by improper installation. **Caution:** When installing electronics it is extremely important to pay close attention to how wires are routed, especially when mounting products to the front fender, front forks, or fairing of your motorcycle. Always be sure to turn the handlebars fully left, fully right, and fully compress the suspension to ensure the wires will not bind and have enough slack for your motorcycle to operate properly.

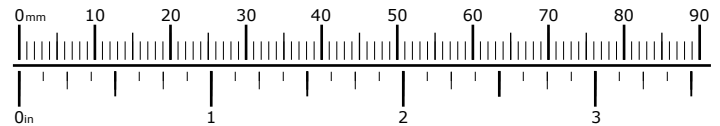
Installation Tips

We strongly recommend using medium strength liquid thread locker on all screws, nuts, and bolts. It is also important to ensure that all hardware is tightened to the proper torque specifications as listed in your owner's manual. For included accessory hardware please refer to the default torque specifications provided below. Inspect all hardware after the first 30 miles to ensure proper torque specifications are maintained.

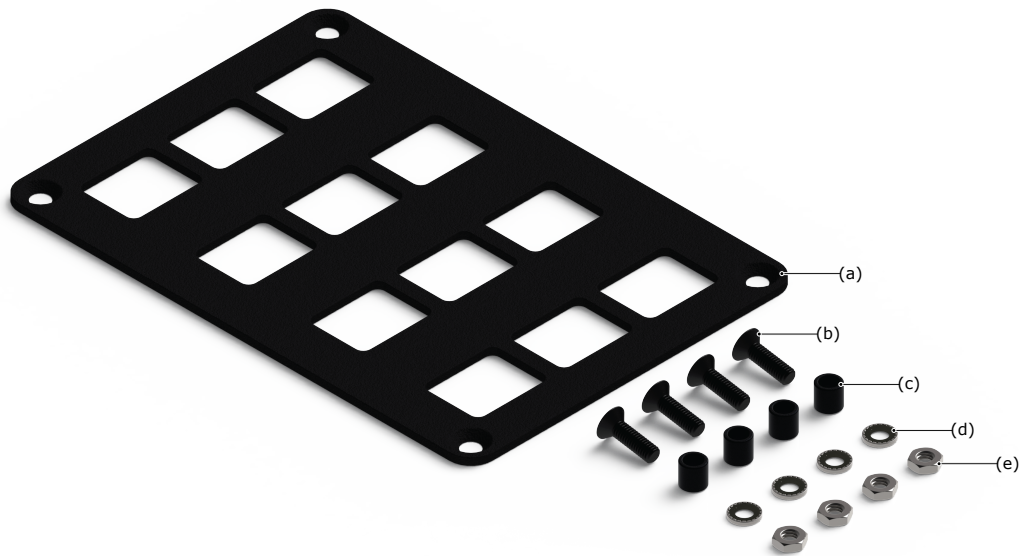
Bolt Size	in-lbs	ft-lbs	Nm
M3	10.0 in-lbs	-	1.0 Nm
M4	23.0 in-lbs	-	2.5 Nm
M5	44.5 in-lbs	3.5 ft-lbs	5.0 Nm
M6	78.0 in-lbs	6.5 ft-lbs	9.0 Nm
M8	-	13.5 ft-lbs	18.0 Nm
M10	-	30.0 ft-lbs	41.0 Nm
M12	-	52.0 ft-lbs	71.0 Nm

Hardware Sizing Guide

Not sure what size bolt you have? Use this ruler to measure screws, bolts, spacers, etc. Remember, the length of a screw or bolt is measured from the start of the "mounting surface" to the end of the screw, so only include the screw head when measuring countersunk screws.



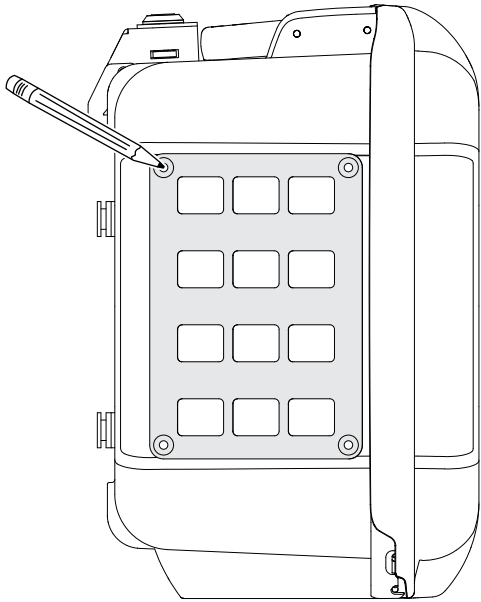
What's In The Box?



Kit Contents

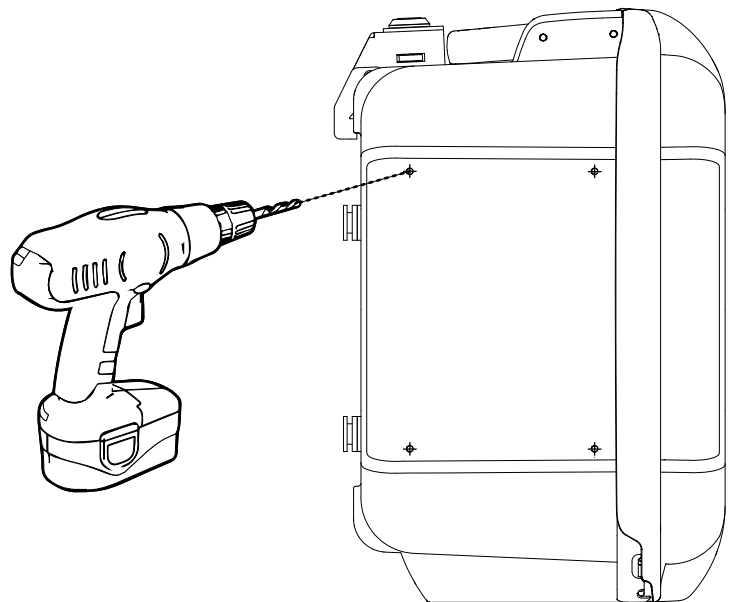
- (a) Side Rigid MOLLE Panel.....Qty 1
- (b) M6x22 DIN 7991.....Qty 4
- (c) 3/8" Spacer.....Qty 4
- (d) M6 Sealing Washer.....Qty 4
- (e) M6 Thin Nut DIN 439B.....Qty 4

1. Installing The MOLLE Panel



1.1 - Marking The Mounting Holes

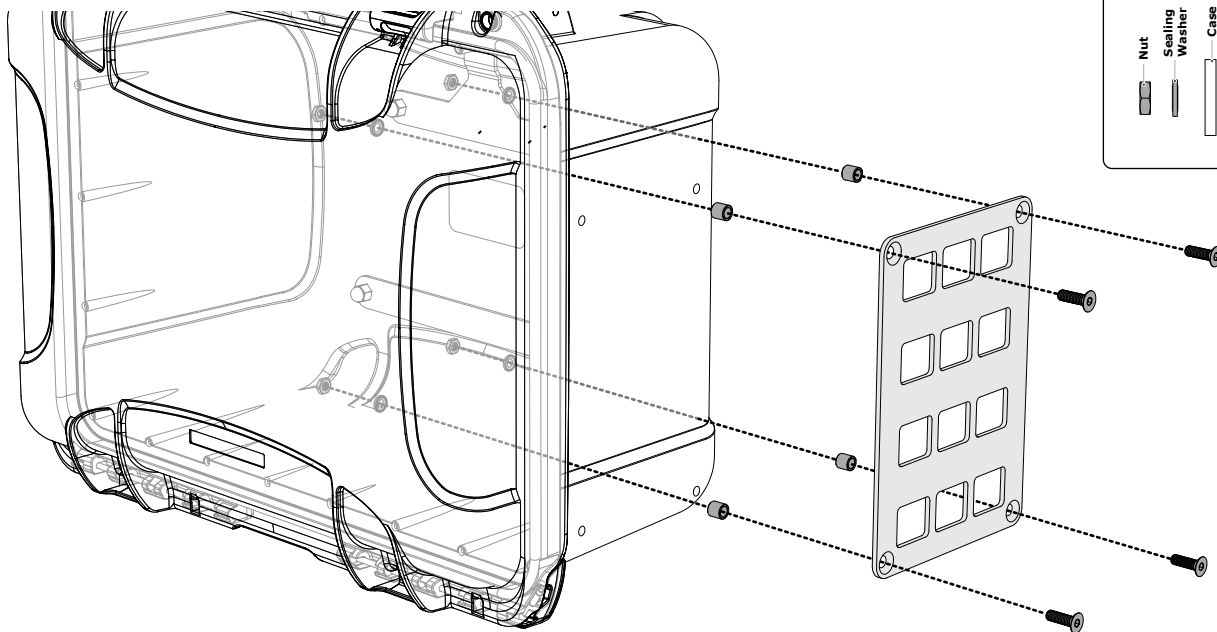
Step One: Use the Rigid MOLLE Panel (a) as a template to mark the four mounting holes onto the case.



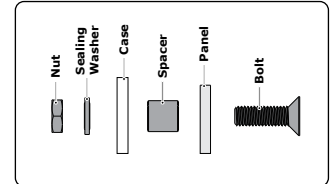
1.2 - Drilling The Case

Step One: Use a center punch or center drill bit to start each of holes to insure that larger drill bit will not wander out of position on the case.

Step Two: Use a 6mm drill bit to drill the four mounting holes into the case.



Hardware Stacking Order



1.3 - Installing The MOLLE Panel

Step One: Use the supplied mounting hardware (b,c,d,e) to attached the MOLLE Panel (a) to the side of the case. Be sure to follow the assembly stacking order, making sure the sealing washer is installed inside of the case.

Step Two: Tighten the bolts to 7 ft-lbs or until the sealing washers (d) compress into the plastic wall of the case and sit flush to the surface.