



H35 Quick-Release Mil-Spec Case
DSL.H35.10000

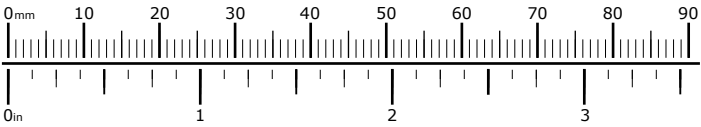
Thank you for choosing DrySpec
We know you would rather be riding your bike than wrenching on it, so we go the extra mile to make sure our instructions are clear and as easy to understand as possible. If you have any questions, comments, or suggestions don't hesitate to give our gear experts a call at 401.360.2551 or visit WWW.DRYSPEC.COM

Please Read Before Installing
DRYSPEC products should always be installed by a qualified motorcycle technician. If you are unsure of your ability to properly install a product, please have the product installed by your local motorcycle dealer. DENALI takes no responsibility for damages caused by improper installation. **Caution:** When installing electronics it is extremely important to pay close attention to how wires are routed, especially when mounting products to the front fender, front forks, or fairing of your motorcycle. Always be sure to turn the handlebars fully left, fully right, and fully compress the suspension to ensure the wires will not bind and have enough slack for your motorcycle to operate properly.

Installation Tips
We strongly recommend using medium strength liquid thread locker on all screws, nuts, and bolts. It is also important to ensure that all hardware is tightened to the proper torque specifications as listed in your owner's manual. For included accessory hardware please refer to the default torque specifications provided below. Inspect all hardware after the first 30 miles to ensure proper torque specifications are maintained.

Bolt Size	in-lbs	ft-lbs	Nm
M3	10.0 in-lbs	-	1.0 Nm
M4	23.0 in-lbs	-	2.5 Nm
M5	44.5 in-lbs	3.5 ft-lbs	5.0 Nm
M6	78.0 in-lbs	6.5 ft-lbs	9.0 Nm
M8	-	13.5 ft-lbs	18.0 Nm
M10	-	30.0 ft-lbs	41.0 Nm
M12	-	52.0 ft-lbs	71.0 Nm

Hardware Sizing Guide
Not sure what size bolt you have? Use this ruler to measure screws, bolts, spacers, etc. Remember, the length of a screw or bolt is measured from the start of the "mounting surface" to the end of the screw, so only include the screw head when measuring countersunk screws.

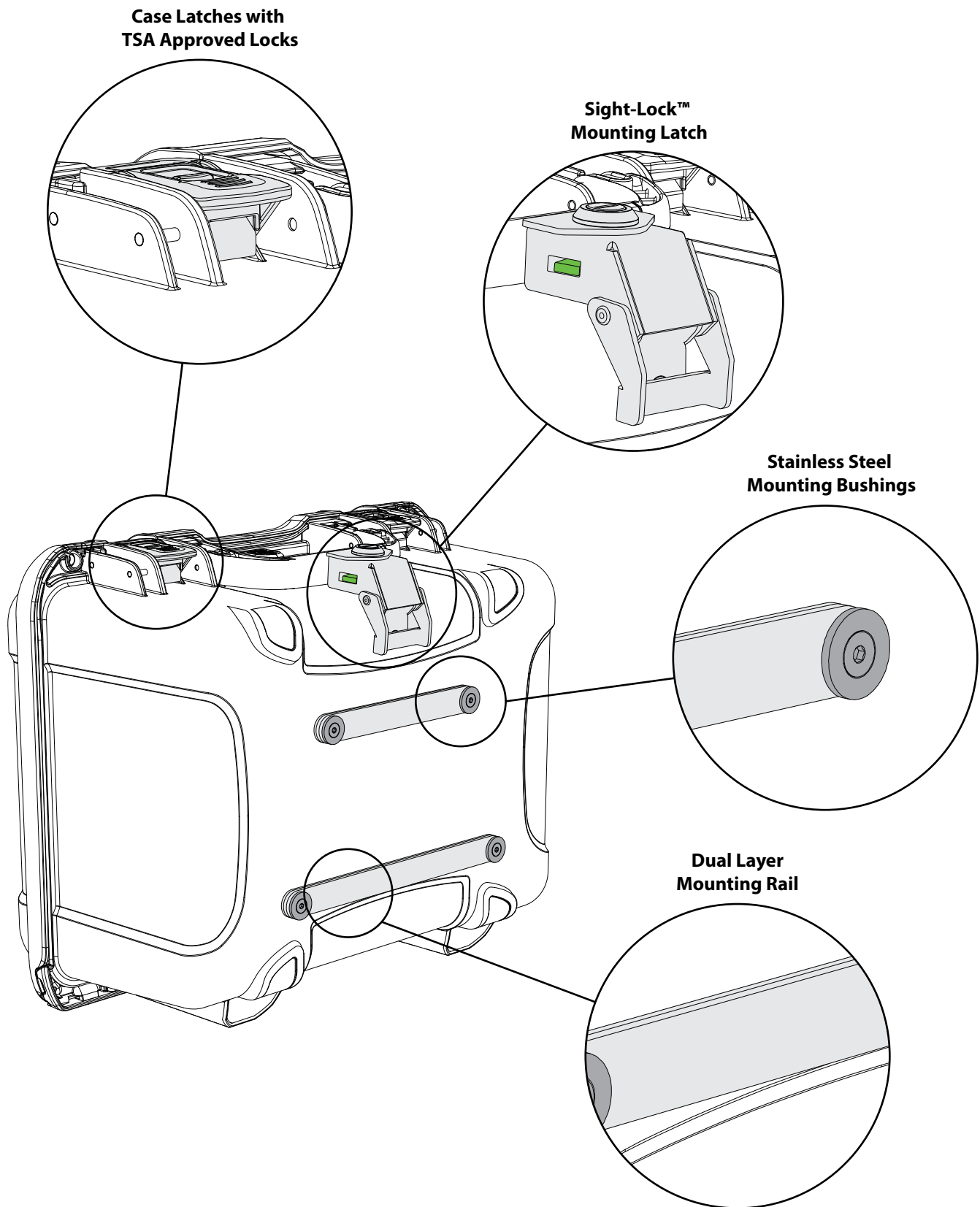


What's In The Box?



Kit Contents

- (a) H35 Quick-Release Mil-Spec Motorcycle CaseQty 1
- (b) Rack Lock Key.....Qty 2
- (c) Case Lock Key.....Qty 2



1.1 - H35 Case Features

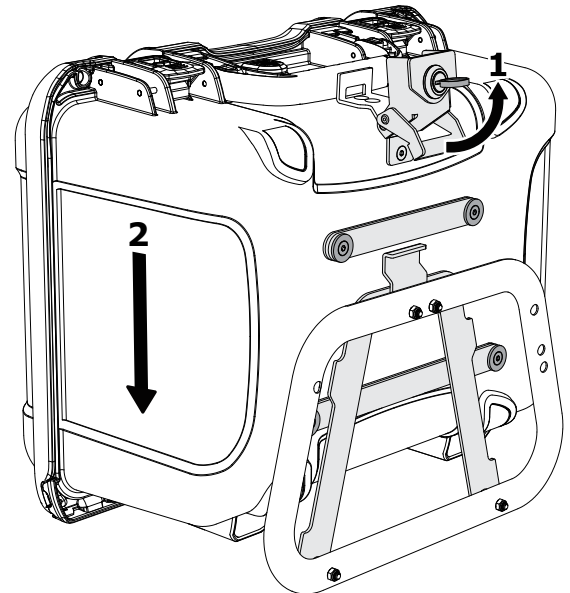
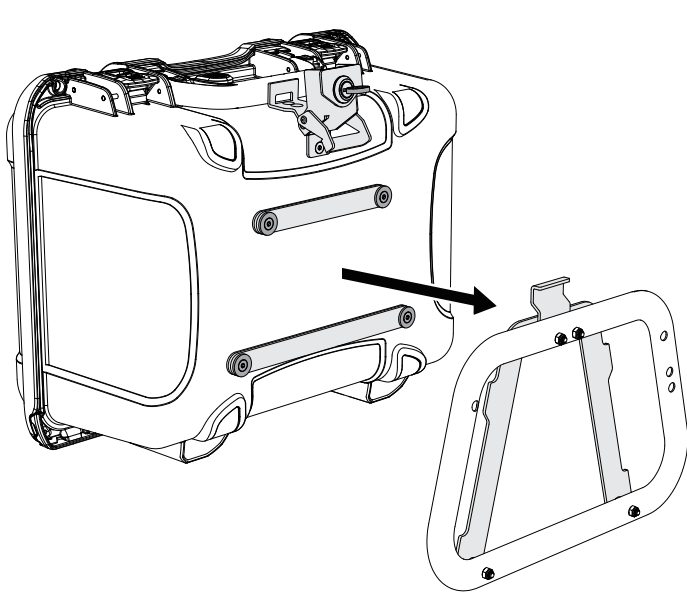
- Crushproof Side-opening construction
- Modular top or side mounting design
- Premium lid latches with TSA approved locks
- Fold-away carry handle
- Proprietary Resin Co-Polymer Material
- Industry Leading 3/16 inch (5mm) Wall Thickness
- Submersible: IP67 & MIL-STD-810F
- Impact Certified: Category 1 ATA Specification 300
- Drop Certified: ATSM D-4169 D-18
- Vibration Certified: ATSM D-4169 D-18

1.1 - A-Lock™ Mounting System Features

- Heavy Duty Quick-Release connection to vehicle racks
- Enables top or side mounting
- Wedge shaped design maintains solid connection over time
- Beefy 18 Gauge Steel Over-Center Latch with Sight-Lock™
- Dual Layer (steel & HDPE) Corrosion-Proof Mounting Rails
- Stainless steel mounting bushings
- Connect to any A-Frame mounting adapters (available for motorcycle top racks, side racks, ATVs and Jeeps)

2. A-Lock™ Mounting System Operation, Side

DRYSPEC.COM



2.1 - Mounting The Case

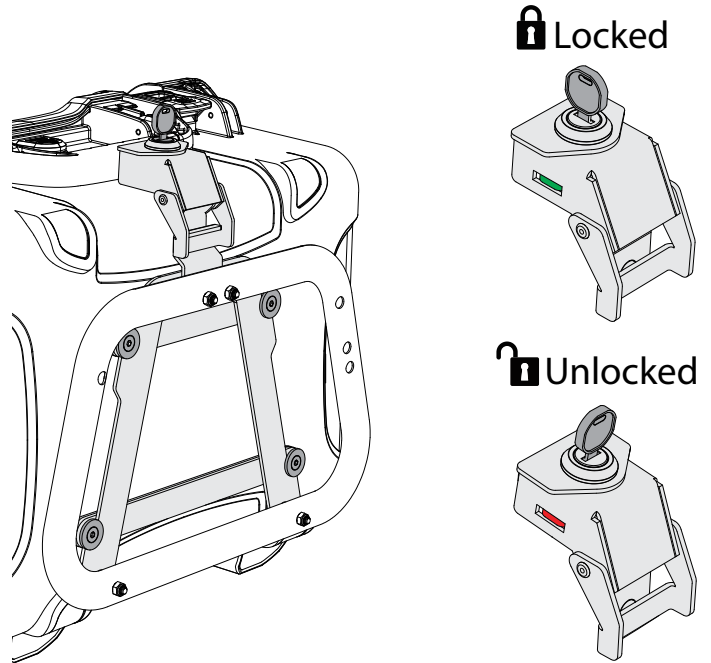
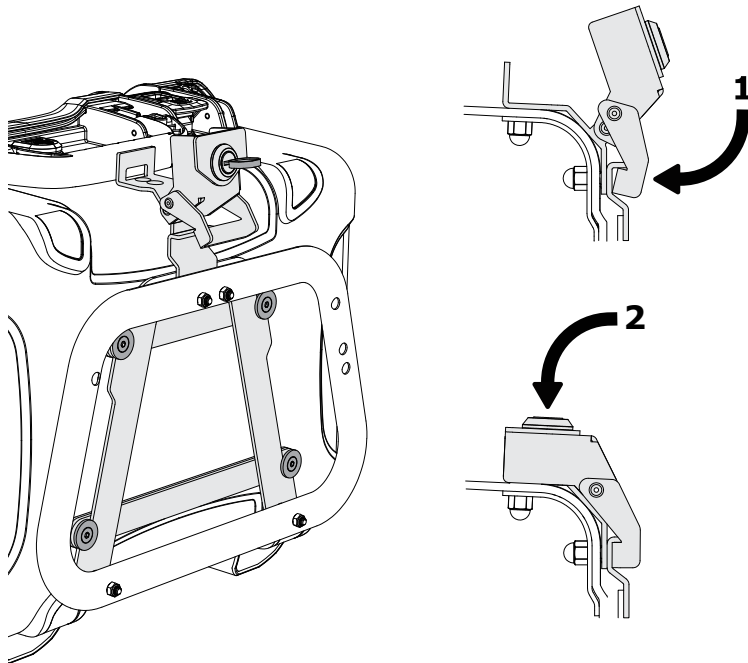
The integrated A-Lock™ Mounting System on the H35 case securely mounts to our steel A-Frame Adapters. Simply mount the A-Frame to any vehicle or surface to create a super robust quick release case mounting solution. (A-Frame Mounting Adapters Sold Separately.)

Step One: To mount the H35 Case to the A-Frame, bring the case towards the A-Frame until the Dual Layer Mounting Rails rest flat against the face of the A-Frame.

2.2 - Mounting The Case

Step One: Swing the Latch Arm on the mounting Latch up and out of the way so that it will not interfere with the Catch on the A-Frame when being lowered into position.

Step Two: Lower the case downward onto the A-Frame, be sure all four Stainless Steel Mounting Bushing properly mate with the A-Frame. Continue to slide the case downward until the bushings bottom out on the four notches on the A-Frame.



2.3 - Latching The Case

Step One: Swing the Latch Arm on the mounting latch over the Catch on the A-Frame.

Step Two: Swing the top of the mounting latch downwards to close the latch and secure the case to the A-Frame.

2.4 - Locking The Sight-Lock™ Latch

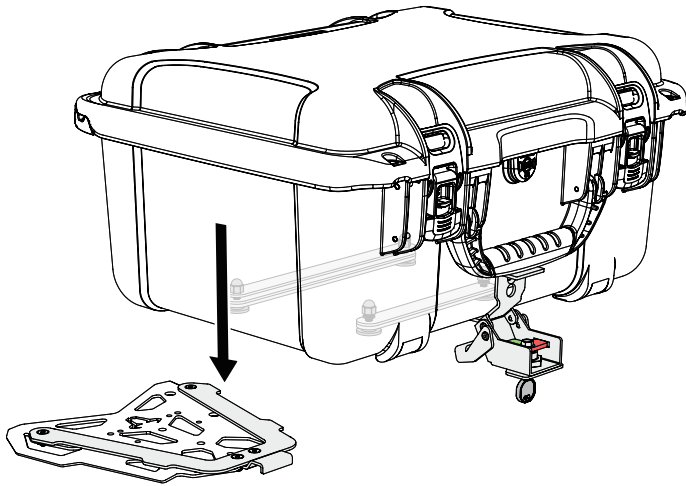
Step One: Insert the Rack Lock Key into the mounting latch and turn counter-clockwise to lock the case. The visual indicator on the side of the Sight-Lock™ Mounting Latch will be GREEN when the latch is locked and RED when unlocked.

To unlock and remove the case from the rack, turn the key clockwise and follow the previous steps in reverse order.

Note: The Sight-Lock™ Latch should always be in the locked position when the vehicle is in operation.

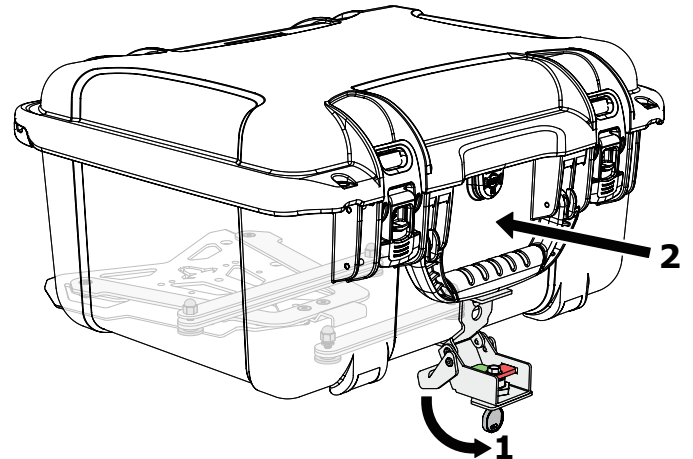
3. A-Lock™ Mounting System Operation, Top

DRYSPEC.COM



3.1 - Mounting The Case

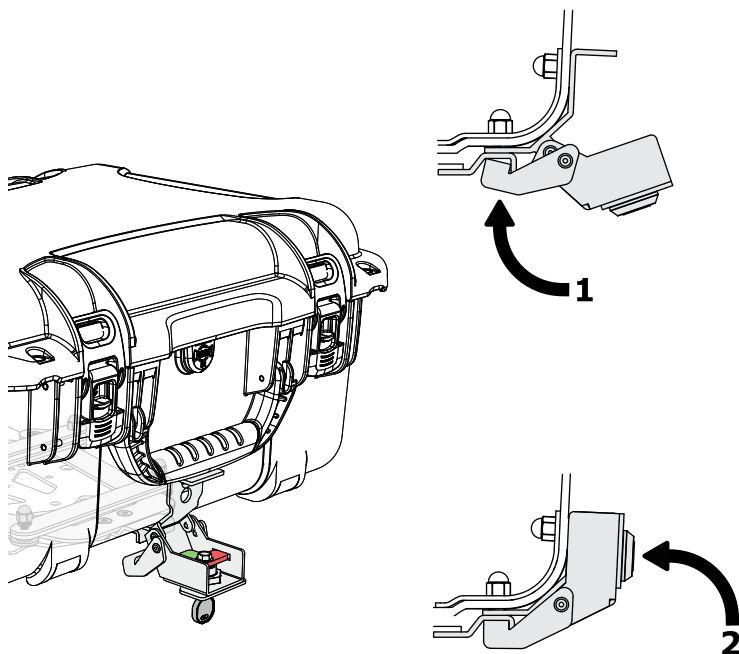
Step One: Lower the H35 Case down onto the A-Frame until the Dual Layer Mounting Rails rest flat against the face of the A-Frame.



3.2 - Mounting The Case

Step One: Swing the Latch Arm on the mounting latch down and out of the way so that it will not interfere with the Catch on the A-Frame when being slid into position.

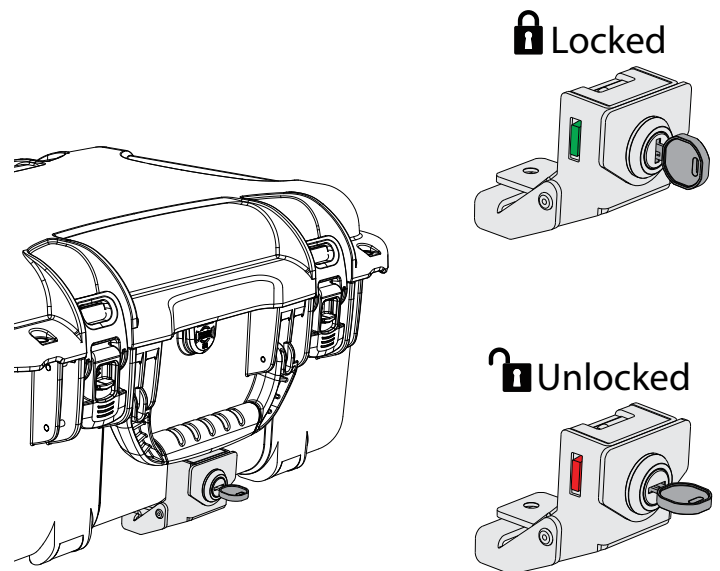
Step Two: Lower the H35 Case backward onto the A-Frame, be sure the four Stainless Steel Mounting Bushing properly mate with the A-Frame. Continue to slide the case backward until the bushings bottom out on the four notches on the A-Frame.



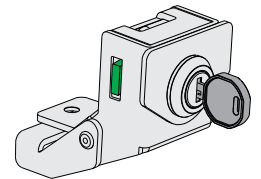
3.3 - Latching The Case

Step One: Swing the Latch Arm on the mounting latch over the Catch on the A-Frame Adapter.

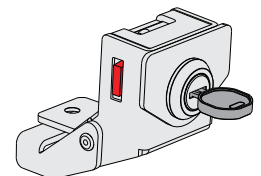
Step Two: Swing the top of the mounting latch downwards to close the latch and secure the case to the A-Frame.



 Locked



 Unlocked



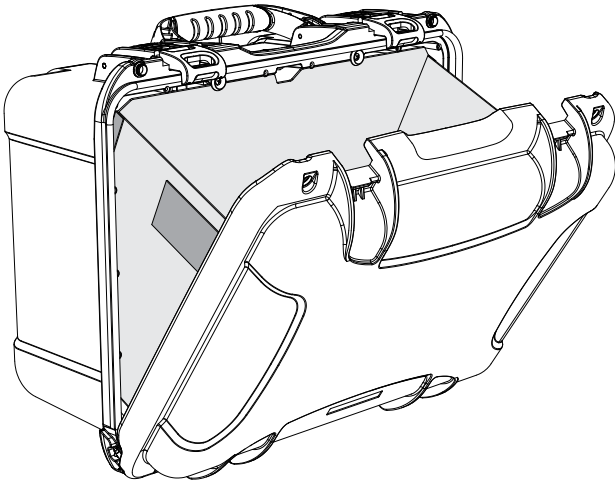
3.4 - Locking the Sight-Lock™ Latch

Step One: Insert the Rack Lock Key into the mounting latch and turn counter-clockwise to lock the case. The visual indicator on the side of the Sight-Lock™ Mounting Latch will be GREEN when the latch is locked and RED when unlocked.

To unlock and a remove the case from the rack, turn the key clockwise and follow the previous steps in reverse order.

4. H35 Case Accessories (Sold Separately)

DRYSPEC.COM



4.1 - Top-Load™ Liner

This innovative liner accessory is fixed to the lid of the case so the entire contents of your case swings out and locks in place for effortless loading and unloading. The H35 case is the first case to provide the unmatched strength of mil-spec side-opening luggage with the convenience of top-opening luggage.

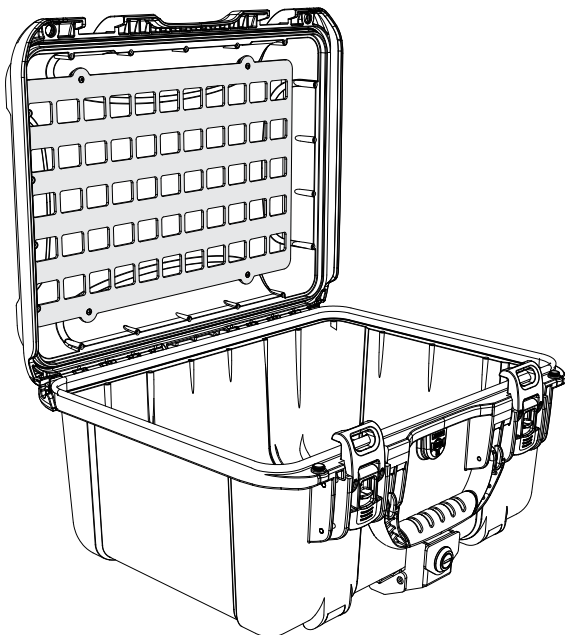
Part Number: DSL.H35.10300



4.2 - Rigid MOLLE Side Panel

Our unique Rigid MOLLE Panels provide a foundation to add, adapt, and infinitely customize your case to suit your needs. This Rigid MOLLE Panel mounts to the outer side of the H35 Case allowing you to mount any MOLLE compatible pouches, bottle holders, fuel bottles, gear mounts, or strap any piece of gear you can think of using webbing or Velcro.

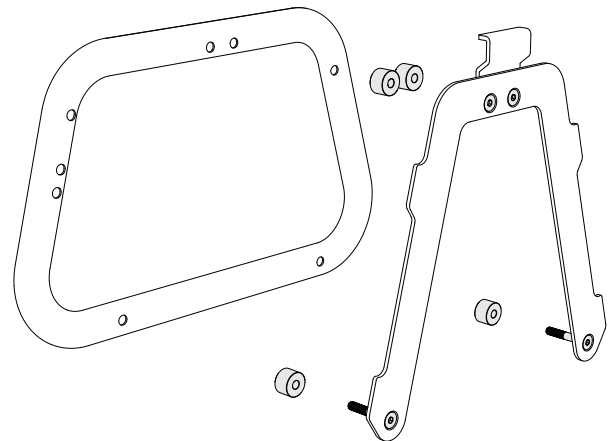
Part Number: DSL.H35.10100



4.3 - Rigid MOLLE Lid Panel

Our unique Rigid MOLLE Panels provide a foundation to add, adapt, and infinitely customize your case to suit your needs. This Rigid MOLLE Panel mounts to the inside lid of the H35 case allowing you to mount any MOLLE compatible pouches, bottle holders, fuel bottles, gear mounts, or strap any piece of gear you can think of using webbing or Velcro.

Part Number: DSL.H35.10200



4.4 - A-Frame Adapter Spacer Kit

This spacer kit positions the H35 Case a ½ inch further away from the vehicle to enable full rotation of the mounting latch in tight spaces. These spacers install between the vehicle rack and A-Frame Mounting Adapter and were specifically developed for use on the non-exhaust side of motorcycles with large grab handles.

Note: The spacing of all motorcycle racks are different, so we recommend one set of spacers if you are using the H35 case as a side cases and your bike has grab rails.

Part Number: DSL.H35.504