

VACATION



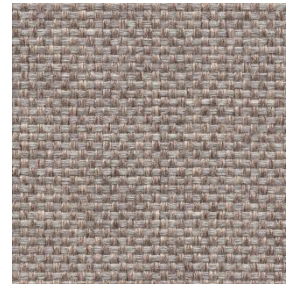
SNOWY



ALICE



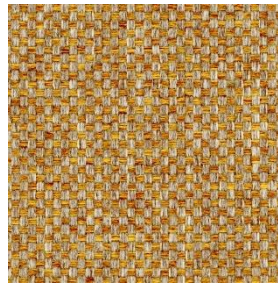
PINNACLES



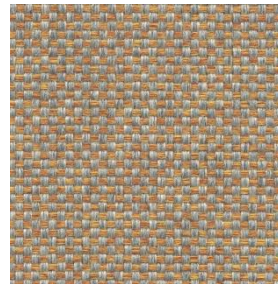
COOBER PEDY



WAVE ROCK



KUNUNURRA



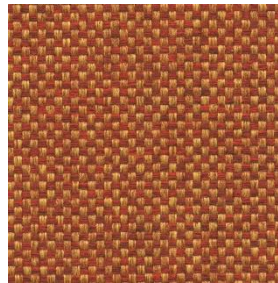
MIMOSA ROCKS



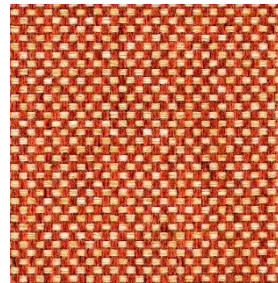
BUNGLE BUNGLES



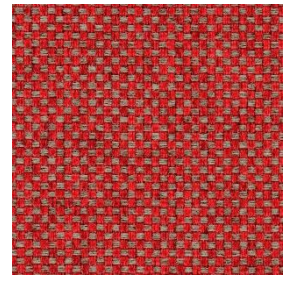
NOOSA SANDS



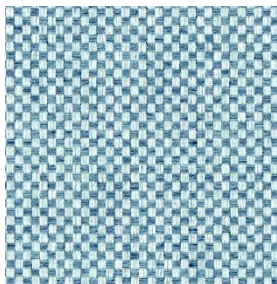
ULURU



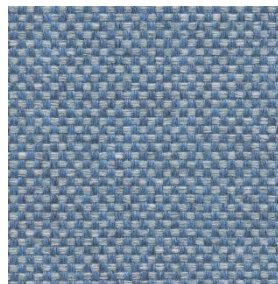
BONDI



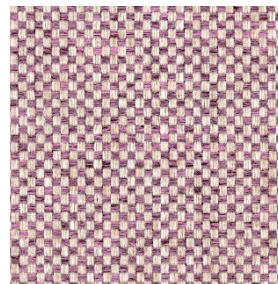
BAROSSA



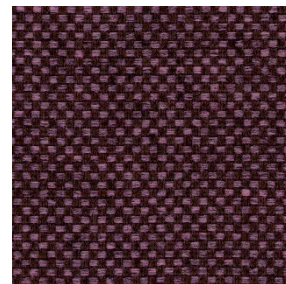
BLUE LAKE



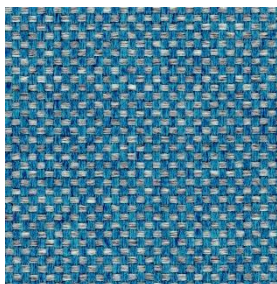
HARBOUR BLUE



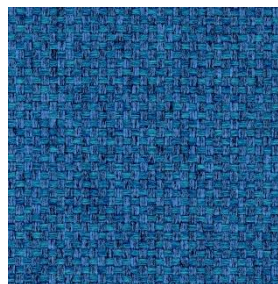
DAYLESFORD



PINK LAKES



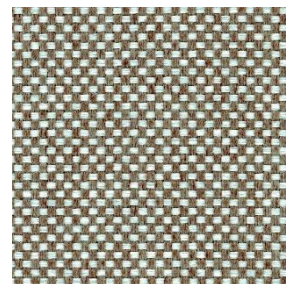
12 APOSTLES



WHITSUNDAYS



CORAL SEA



BYRON

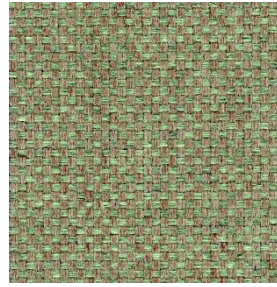
Please note that colours and scale between various media and actual fabric can appear differently.
Please check actual fabric samples before ordering.



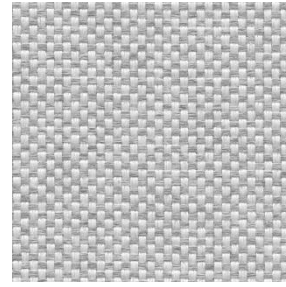
DAINTREE



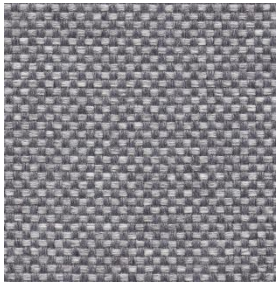
GRAMPIANS



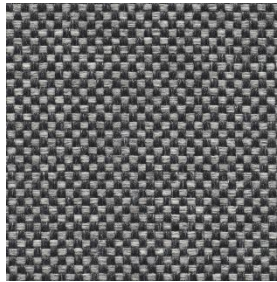
KAKADU



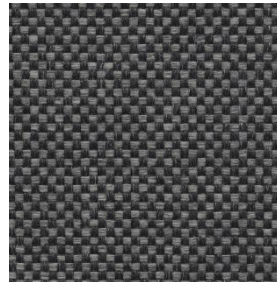
KOSCIUSZKO



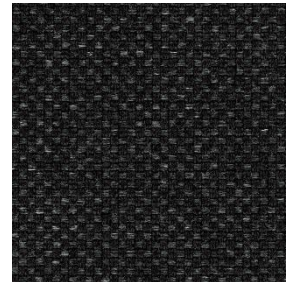
JENOLAN CAVES



CUTTA CUTTA
CAVES



KALGOORLIE



DEVILS MARBLES

+ Composition

100% Polyester Trevira CS

+ Width/Roll Size

150cm/50m

+ Weight

400g/m²

+ Abrasion

75,000 Martindale

+ CTA Performance

<i>hc</i>	HEAVY DUTY COMMERCIAL USE
<i>sf</i>	COMMERCIAL SCREEN FABRICS

+ Fire Test Certificates

AS 1530.3

AS 3837 Group 1

IMO Res. A.652 (16) Part 8

BS 5852 Crib 5

CAL TB 117:2013

+ Care Instructions

Refer to website

www.mactextiles.com.au

+ Colours

28