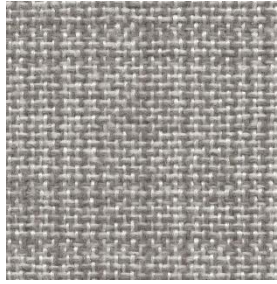


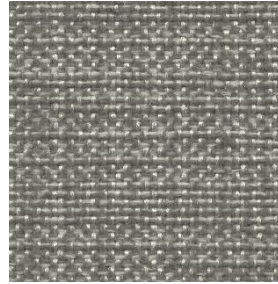
FARM LIFE



MERINO



BARLEY



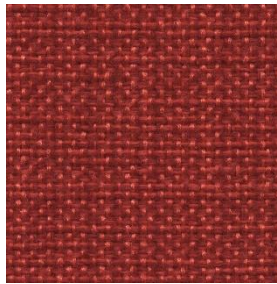
FLAX



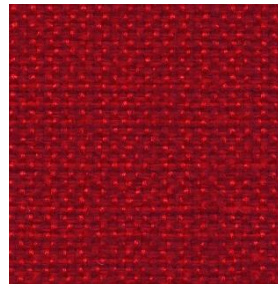
THOROUGHBRED



CANOLA



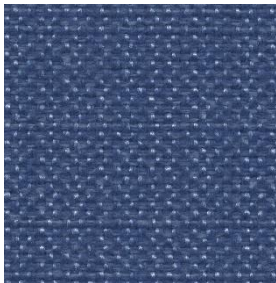
ARGILE



BLOODLINE



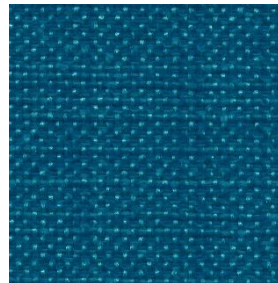
DUSK



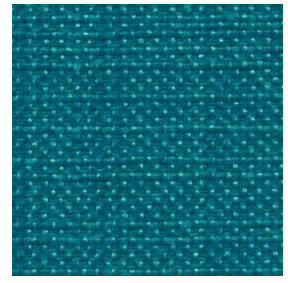
IRRIGATE



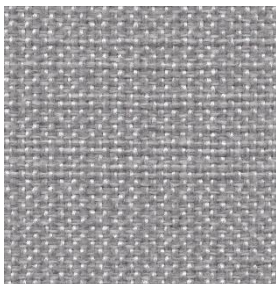
BILLABONG



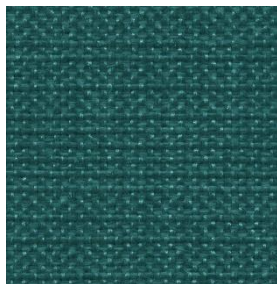
AQUIFER



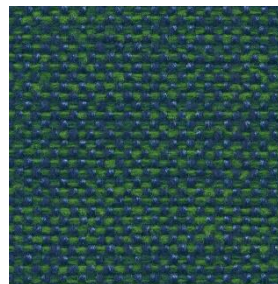
GRAZIER



EQUINE



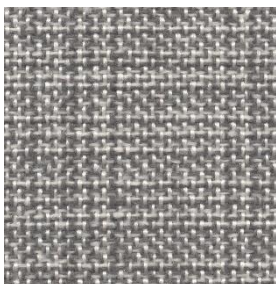
LA NINA



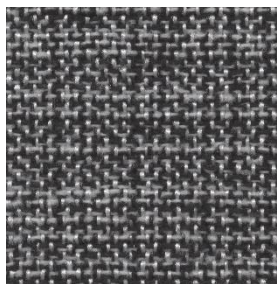
PASTURE



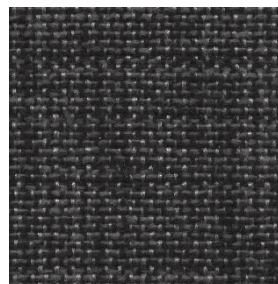
ECOLOGY



EL NINO



JERSEY

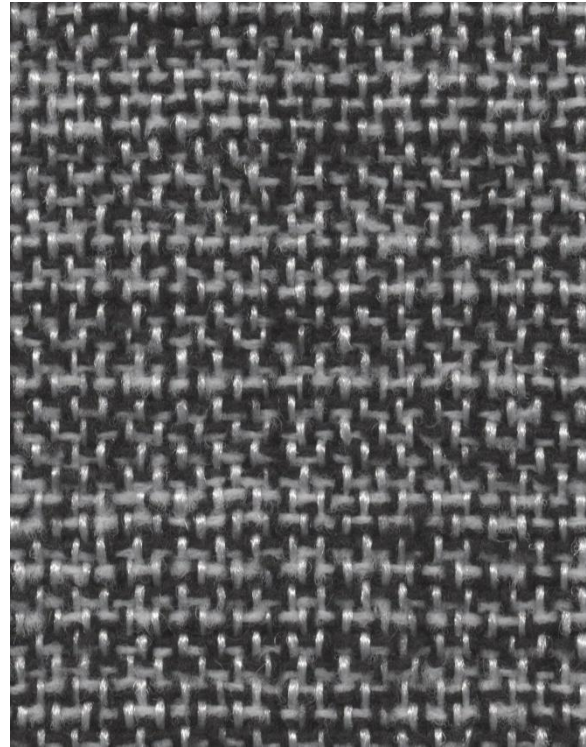
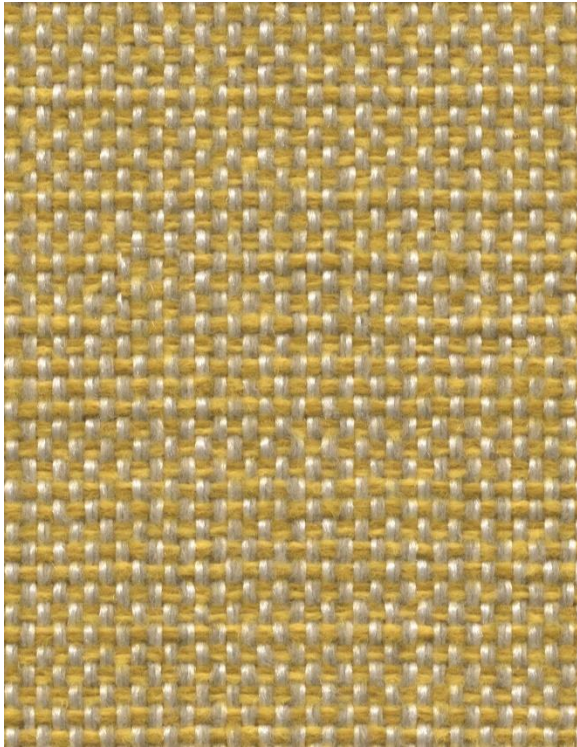


DROUGHT



ALLUVIAL

FARM LIFE



+ Composition

100% Polyester Trevira CS

+ Width / Roll Size

140cm / 50m

+ Weight

400g/m²

+ Abrasion

70,000 Martindale

+ CTA Performance

<i>hc</i>	HEAVY DUTY COMMERCIAL USE
<i>sf</i>	COMMERCIAL SCREEN FABRICS

+ Fire Test Certificates

AS 1530.3

AS 3837 Group 1

IMO Res. A.652 (16) Part 8

BS 5852 Crib 5

BS 7176 Medium Hazard

CAL TB 117:2013

+ Care Instructions

Refer to website

www.mactextiles.com.au

+ Colours

20