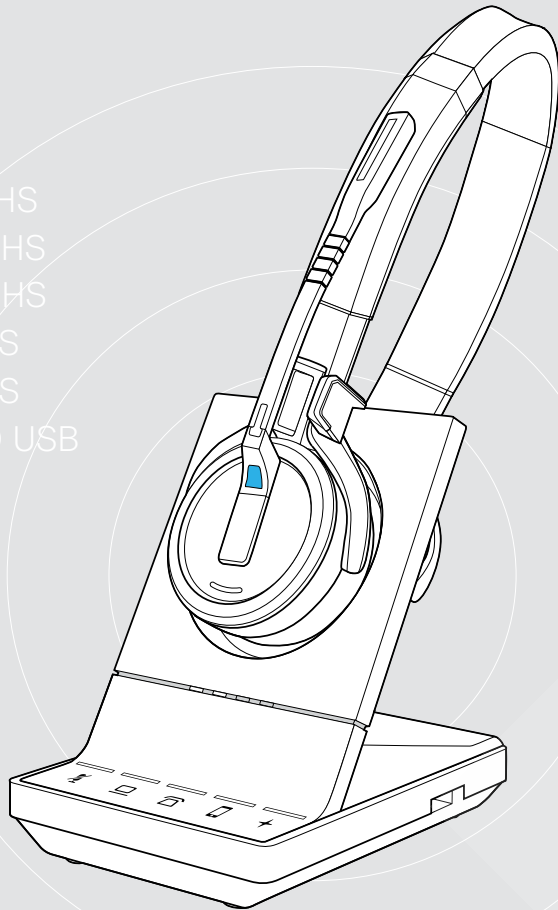


SDW 10 HS  
 SDW 30 HS  
 SDW 60 HS  
 SDW 3 BS  
 SDW 5 BS  
 BTD 800 USB



# IMPACT SDW 5000 Series

DECT Wireless Headset System

## User Guide

**Questions?**  
[Click to Live Chat](#)

### Contents

Package contents.....	2
Base stations with components .....	2
Headset with components.....	3
Product overview.....	4
Overview of the base station.....	4
Overview of the headset.....	5
Overview of the BTD 800 USB dongle.....	7
Overview of the LEDs.....	7
Connecting the base station.....	9
Connecting the base station to the mains power supply.....	10
Pairing and charging the headset before first use.....	10
Connecting the base station to a fixed line phone - SDW 5 BS only.....	11
Connecting the base station to a computer.....	13
Connecting the base station to Bluetooth devices - BTD 800 USB only.....	14
Reconnecting/disconnecting Bluetooth.....	16
Connecting an optional USB headset or speakerphone .....	17
Connecting an optional busylight .....	17
Assembling and wearing the headset SDW 10 HS.....	18
Using the headset with the headband.....	18
Using the headset with the ear hook.....	19
Using the headset with the neckband.....	21
Detaching headband, ear hook or neckband.....	23
Adjusting and wearing the headset SDW 30 HS   SDW 60 HS.....	24
Labeling the headset .....	25
Configuring the headset system.....	26
Configuring the headset system using EPOS Connect or the DIP switches.....	26
Adjusting the audio signal for desk phones using the ABC switch - SDW 5 BS only.....	30
Adjusting the transmission volume.....	30
Setting up and using the headset.....	31
Adjusting the volume.....	31
Muting the headset's microphone.....	32
Enabling/disabling voice prompts.....	32
Verifying battery life.....	33
If you leave the DECT or Bluetooth range.....	33
Making calls using the headset system.....	34
Preparing calls - initial settings.....	34
Selecting audio source - fixed line phone/ computer/ mobile phone.....	34
Making a call.....	35
Accepting/rejecting a call .....	35
Transferring calls to connected devices.....	36
Ending a call.....	37
Redialing .....	37
Putting a single active call on hold.....	37
Managing multiple calls - two calls from two audio sources.....	38
Setting up conference call.....	40
Using the dictation mode.....	43
Listening to media using the headset.....	44
Using the motion sensor.....	45
Charging the headset and storing the headset system.....	46
Charging the headset.....	46
Switching the headset system off during extended non-use.....	47
Sharing a workplace.....	48
Using the headset with a third party base station (DECT-GAP telephone).....	48
Switching between DECT dongle and base station.....	49
Cleaning and maintaining the headset system.....	50
Replacing the ear pads.....	50
Replacing/removing the headset's rechargeable battery.....	51
Updating the firmware of the products.....	51
If a problem occurs .....	52
Specifications.....	55

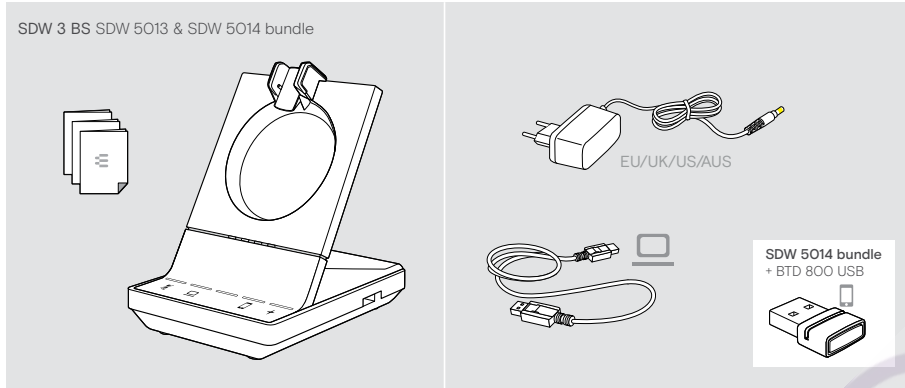
### Package contents

In the SDW 5000 Series, all headsets and base stations are compatible with each other, allowing you to combine the products to meet your needs.

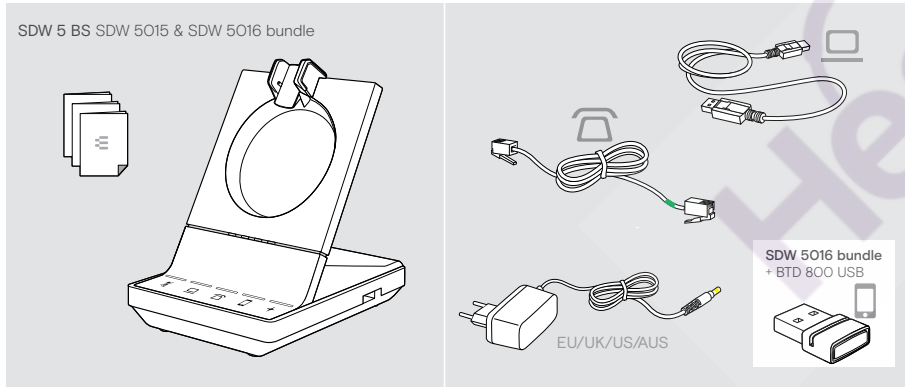
**i** For safety instructions, consult the Safety Guide.  
A list of accessories can be found on the product page at [www.eposaudio.com](http://www.eposaudio.com).

### Base stations with components

SDW 3 BS SDW 5013 & SDW 5014 bundle



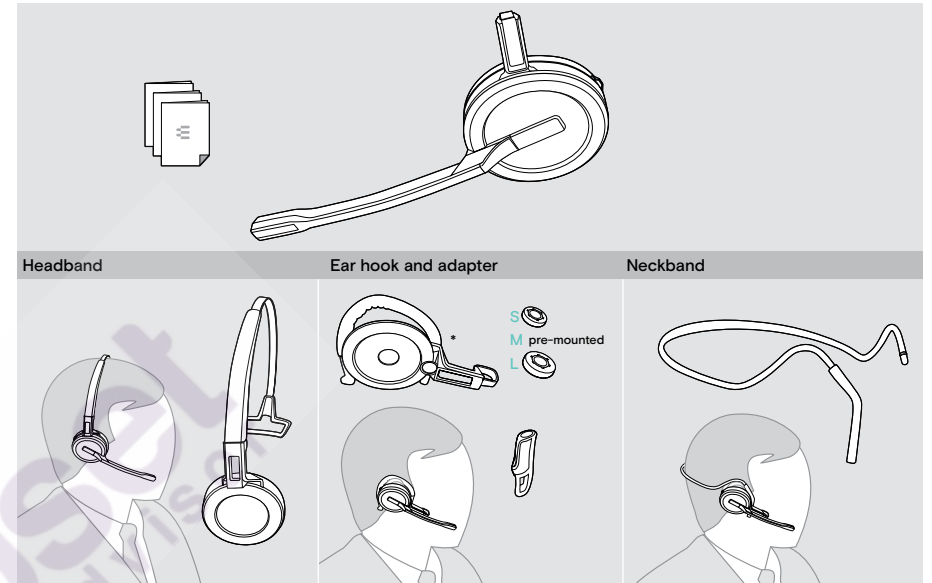
SDW 5 BS SDW 5015 & SDW 5016 bundle



**Questions?  
Click to Live Chat**

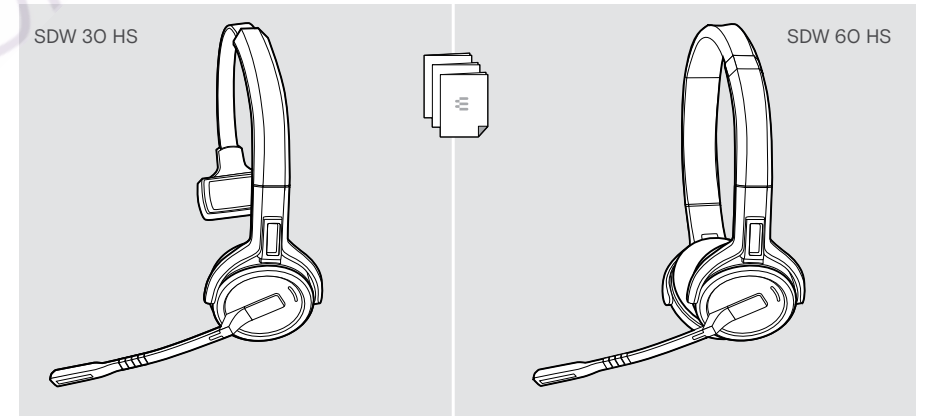
### Headset with components

Headset SDW 10 HS



\*The wearing style adapter is also needed for assembling the neckband (see page 21).

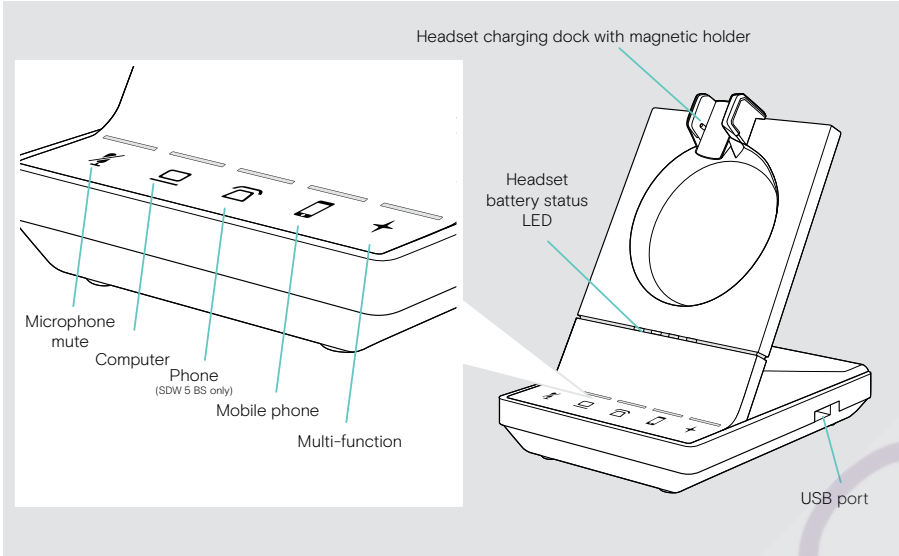
Headset SDW 30 HS | SDW 60 HS



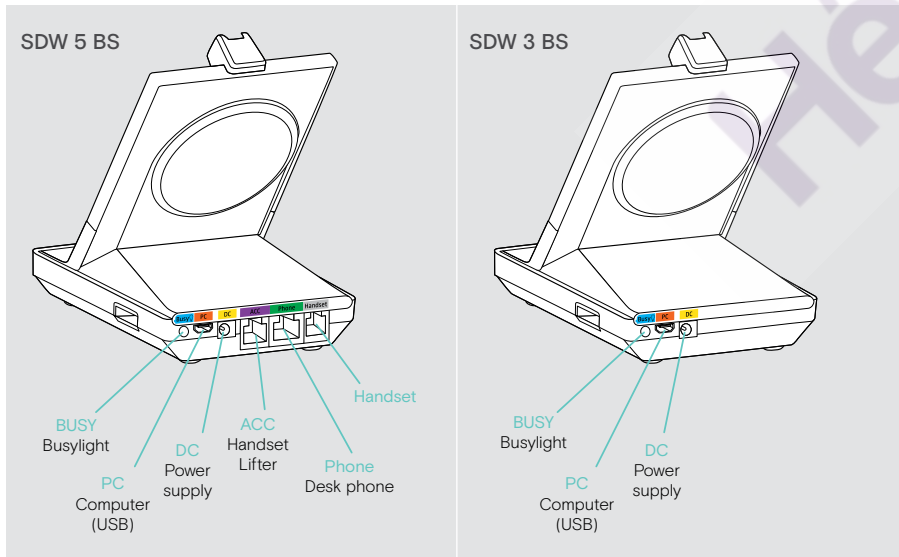
## Product overview

### Overview of the base station

#### Overview of the front

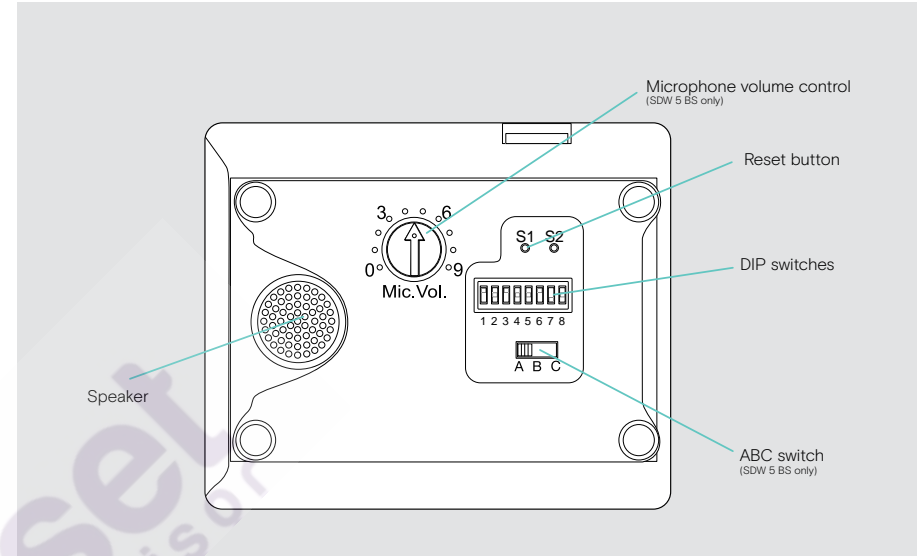


#### Overview of the rear sockets



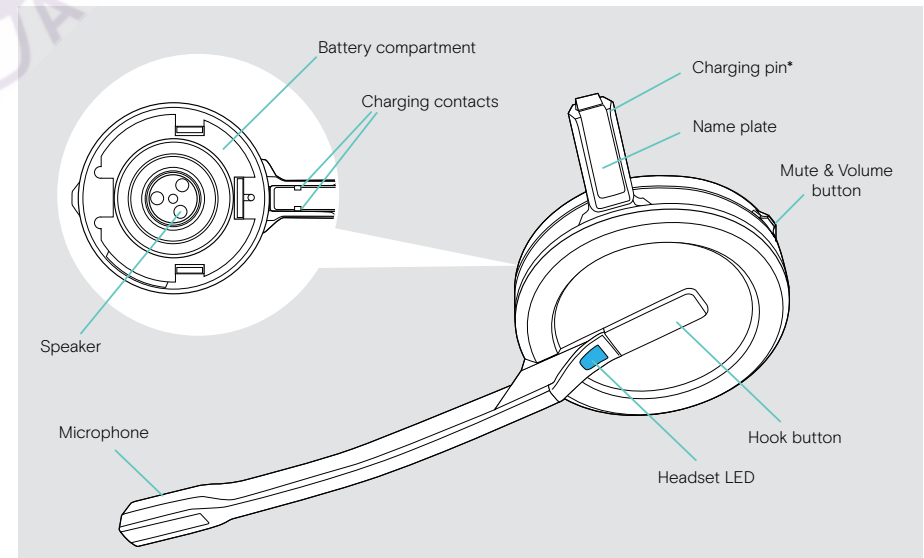
**Questions?  
Click to Live Chat**

#### Overview of the bottom



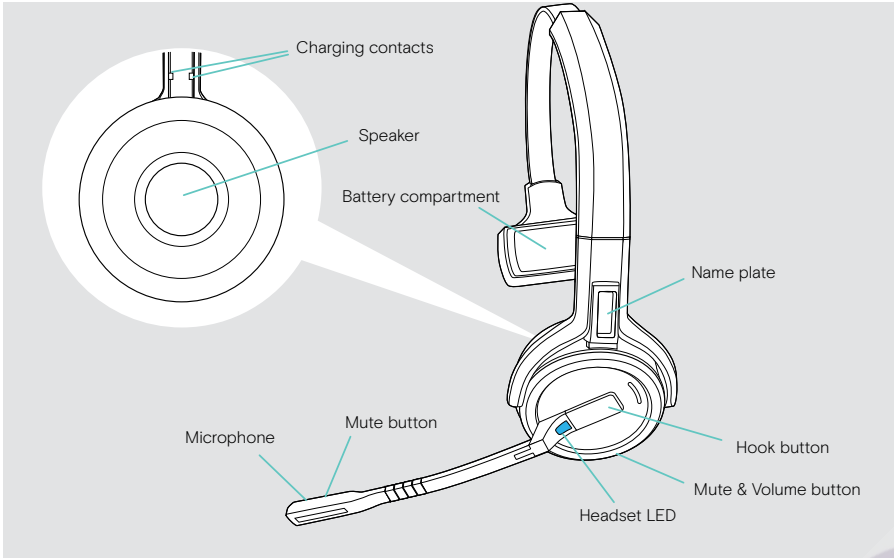
### Overview of the headset

#### Overview of the headset SDW 10 HS

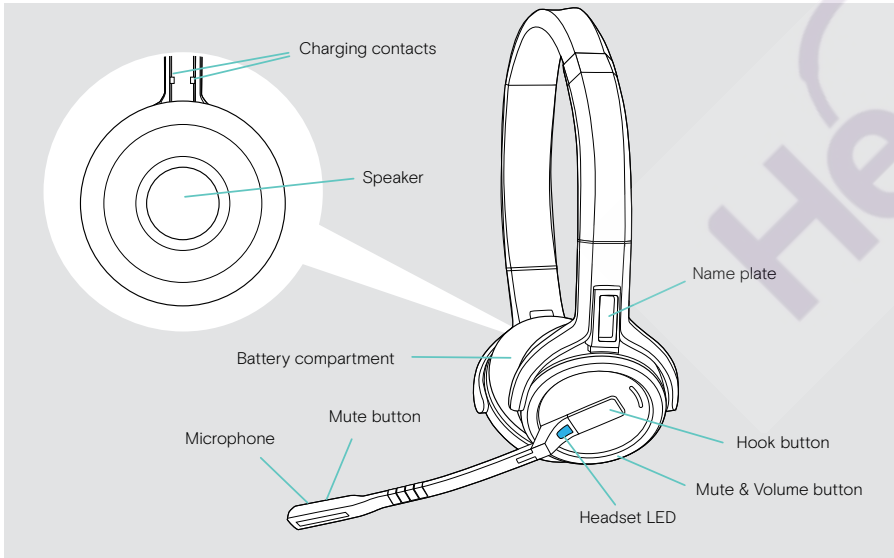


\*Inserted into the holder of the headband or wearing style adapter

Overview of the headset SDW 30 HS

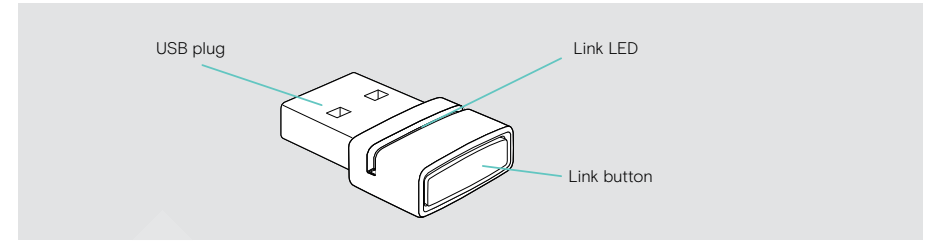


Overview of the headset SDW 60 HS



**Questions?  
Click to Live Chat**

Overview of the BTD 800 USB dongle

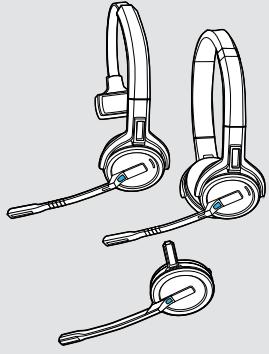





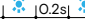



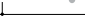


Overview of the LEDs

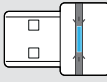



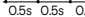
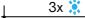
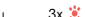

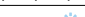

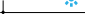

Overview of the base station LEDs

Base station	LED	Meaning
	off	Headset microphone is active
	constant (red)	Headset microphone is muted
	off	Corresponding device is not in focus*
	constant (white)	Corresponding device is in focus* *Focus device: the device that initiates an outgoing call when the headset's hook button is tapped.
	constant (blue)	<ul style="list-style-type: none"> <li>outgoing call / active call</li> <li>Merged calls from two audio sources: two LEDs light up  +  /  +  + </li> </ul>
	flashes fast	Incoming call
	flashes slow	Call on hold
	off	No external USB or Bluetooth headset connected/ no media playback
	constant (white)	<ul style="list-style-type: none"> <li>USB headset connected or</li> <li>Bluetooth headset connected via dongle</li> </ul>
	constant (red)	No headset connected
	flashes (red)	<ul style="list-style-type: none"> <li>Incoming call - no headset connected</li> <li>Connected USB headset is not supported</li> </ul>
	constant* (purple)	Media streaming *The LED is off per default and can be enabled via EPOS Connect.
	constant (green)	Dictation mode on
	segments 1 - 4 are lit	Charging status of the headset battery (see page 46)
off	<ul style="list-style-type: none"> <li>Headset battery flat</li> <li>no SDW 5000 headset connected</li> </ul>	

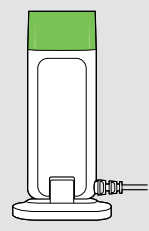



Overview of the headset LED

Headset	LED	Meaning
		<ul style="list-style-type: none"> <li>Headset is being charged in the base station</li> <li>Headset fully charged in CH 30 charger</li> </ul>
		Headset is being paired to base station
		<ul style="list-style-type: none"> <li>Headset switches on</li> <li>Headset successfully connected to the base station</li> </ul>
		Headset switches off
		Incoming call
		<ul style="list-style-type: none"> <li>Outgoing/active call</li> <li>Softphone status: BUSY</li> </ul>
		Media streaming
		<ul style="list-style-type: none"> <li>The LED is off per default and can be enabled via EPOS Connect.</li> </ul>
		Headset is fully charged in the base station
		Firmware upgrade

Overview of the dongle BTD 800 USB LED

Dongle	LED	Meaning
	<p>mode 1:</p> 	Dongle in pairing mode: searching for Bluetooth devices to pair and connect
	<p>mode 2:</p> 	
		<ul style="list-style-type: none"> <li>Search mode 1: Mobile phone</li> <li>Search mode 2: Bluetooth headset</li> </ul>
		Pairing successful
		Pairing failed
		Dongle tries to connect to a Bluetooth device
		Dongle and Bluetooth device connected
		<ul style="list-style-type: none"> <li>Outgoing/active call</li> <li>Media streaming in standard quality</li> </ul>
		Incoming call
		Media streaming in high quality
	Microphone of the connected Bluetooth device is muted	

Overview of the EPOS SDW Busylight (UI 10 BL) LED

Busylight	LED	Meaning
		<ul style="list-style-type: none"> <li>Presence status softphone: <b>AVAILABLE</b></li> <li>No active call</li> <li>Media streaming</li> </ul>
		<ul style="list-style-type: none"> <li>Presence status softphone: <b>AWAY</b>/ be right back</li> <li>Headset out of range</li> <li>No headset connected</li> </ul>
		<ul style="list-style-type: none"> <li>Presence status softphone: <b>BUSY</b>/ Presenting/ Do not disturb</li> <li>Active call on softphone, desk phone or mobile phone</li> <li>UC* client in meeting</li> </ul>

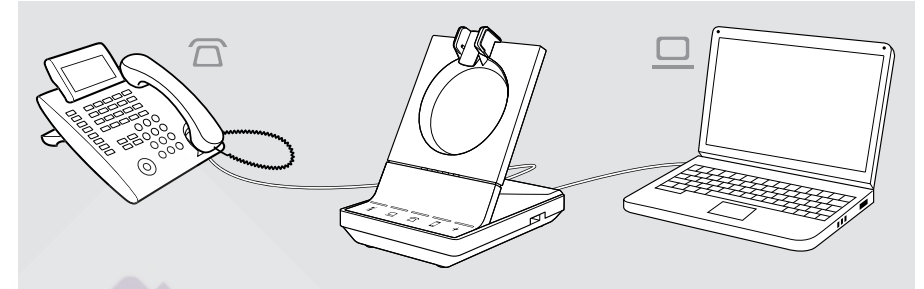
\*UC Client = Unified communications client such as Microsoft® Skype for Business

**Questions?**  
**Click to Live Chat**

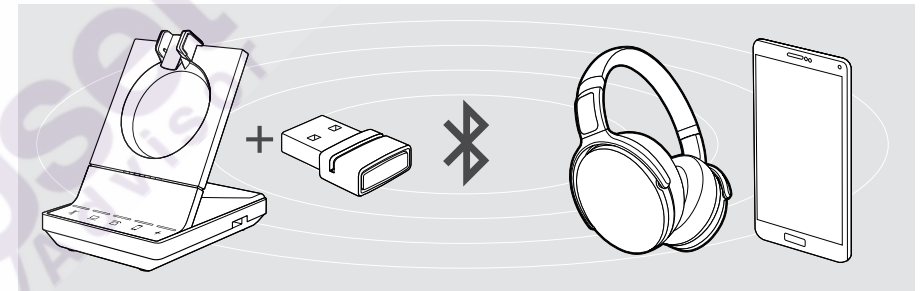
Connecting the base station

The base station controls the wireless communication to the headset.

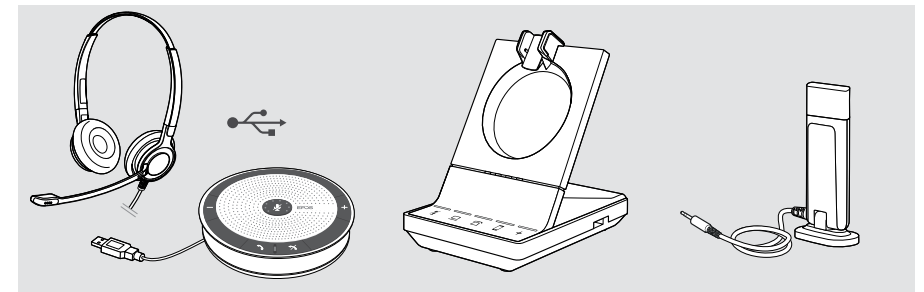
Depending on the variant you can plug in the headset system to your fixed line phone and/or your computer.



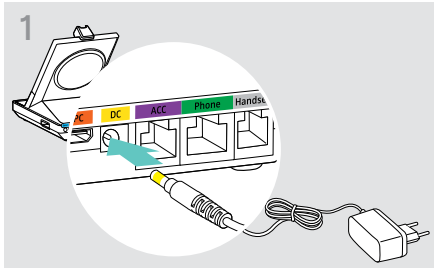
Via the Bluetooth dongle BTD 800 USB you can connect mobile phones or Bluetooth headsets.



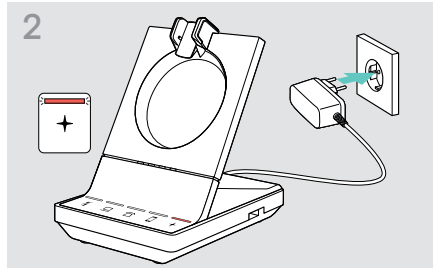
Additionally you can plug a USB headset or speakerphone in the USB port or the EPOS SDW Busylight (UI 10 BL) in the back of the base station.



### Connecting the base station to the mains power supply



▷ Connect the plug of the power supply unit to the DC socket (marked yellow).



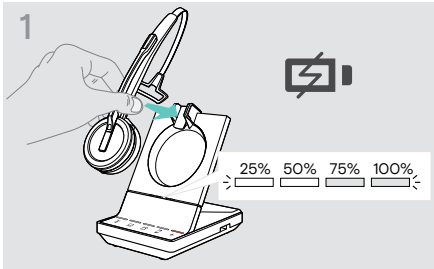
▷ Connect the power supply unit to a wall socket. The + LED lights up red. See page 13 for supported features with and without power supply connection.

### Disconnecting the base station from the mains power supply

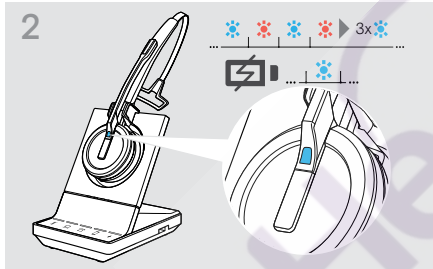
▷ Unplug the power supply unit from the wall socket, if the product is not used for extended periods of time.

### Pairing and charging the headset before first use

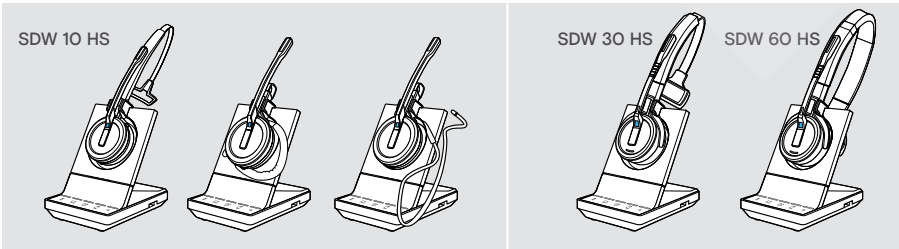
▷ Charge the rechargeable battery for at least 20 minutes before using it for the first time. A complete charging process takes about 60 minutes for SDW 10 HS and 90 minutes for SDW 30 HS/ SDW 60 HS (see page 46).



▷ Place the headset into the magnetic holder of the base station. The Headset battery status LEDs on the base station indicate the charge status.



If the headset and base station are not paired, the headset LED flashes blue and red shortly. The LED turns blue when pairing is complete and the headset will start charging.



**i** During the first charging process and after long periods of non-use, it may take up to 5 minutes until the headset LED lights up.

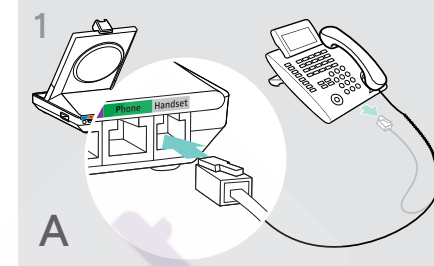
**Questions?  
Click to Live Chat**

### Connecting the base station to a fixed line phone – SDW 5 BS only

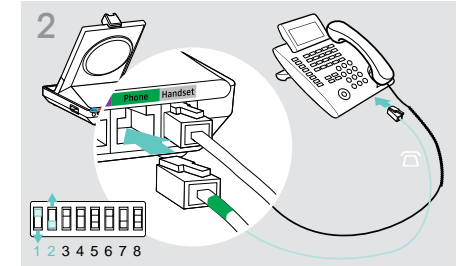
- ▷ Check which connection possibility is best suited for your telephone and follow the instructions in the corresponding chapter A, B, C or D.
- ▷ Place the base station at a minimum distance of 15 cm from the fixed line phone.



#### Connecting the base station to a fixed line phone without headset socket

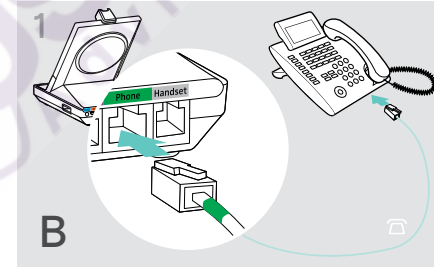


- ▷ Disconnect the handset cable from the telephone.
- ▷ Connect it to the Handset socket on the base station.

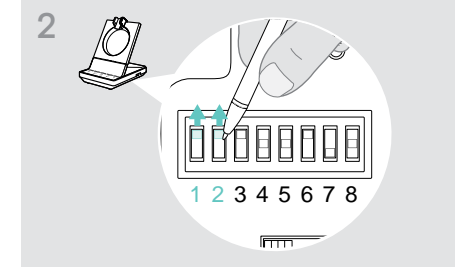


- ▷ Connect the telephone cable to the handset socket and to the Phone socket on the base station.
- ▷ Use a pointed object to set the DIP switches 1 and 2 at the bottom of the base station to the position shown.

#### Connecting the base station to a fixed line phone with headset socket



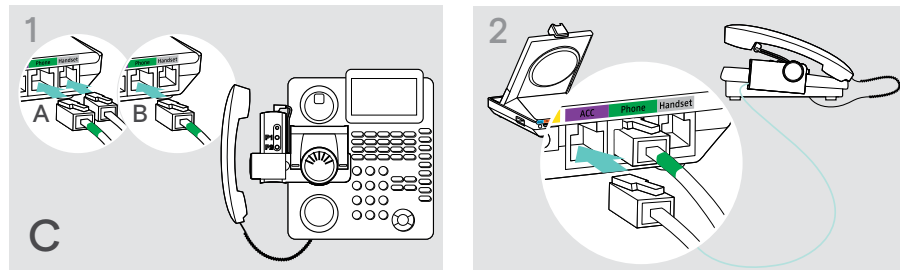
- ▷ Connect the telephone cable to the headset socket on the telephone and to the Phone socket (marked green) on the base station.



- ▷ Use a pointed object to set the DIP switches 1 and 2 to the position shown.

**Connecting the base station to an optional mechanical handset lifter**

The handset lifter allows you to answer calls even when you are away from your desk. The EPOS HSL 10 II mechanical handset lifter is available from your EPOS partner.

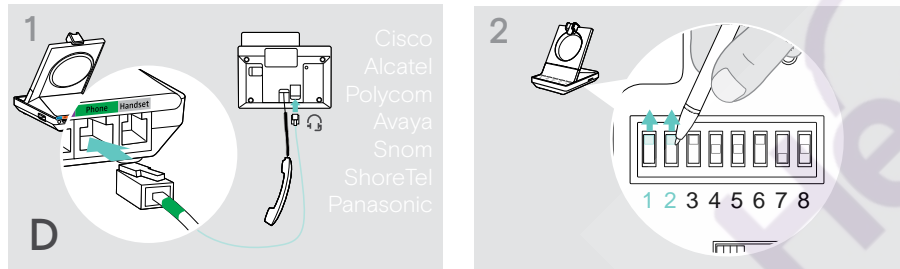


- ▷ Connect the base station to the fixed line phone as described in chapter A.
- ▷ Connect the handset lifter to the fixed line phone. For more information, refer to the instruction manual of the HSL 10 II handset lifter.
- ▷ Connect the handset lifter to the ACC socket on the base station.

**Connecting the base station to an optional electronic hook switch control (EHS)**

The necessary EHS connection cables as well as adapter cables for manufacturer specific standards are available from your EPOS partner.

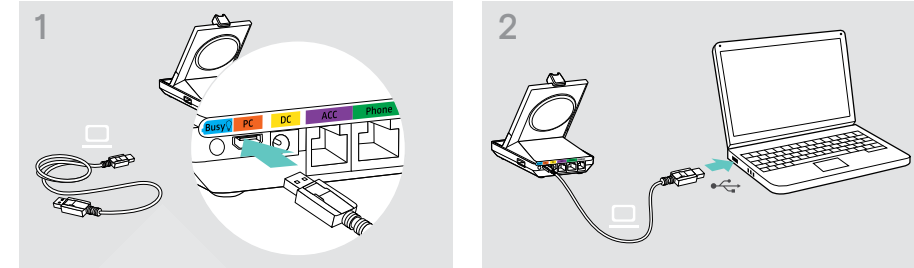
For further information concerning corresponding phones and cables visit [www.eposaudio.com/compatibility](http://www.eposaudio.com/compatibility). Quick Guides are supplied with the cables or can be found on the product page on our website at [www.eposaudio.com](http://www.eposaudio.com).



- ▷ Connect the base station to the fixed line phone as shown in the cable Quick Guide.
- ▷ Use a pointed object (e.g. a ball pen) to set the DIP switch to the position shown in the cable Quick Guide.

**Questions?  
Click to Live Chat**

**Connecting the base station to a computer**



- ▷ Connect the USB cable to the PC socket on the base station.
- ▷ Connect the USB cable to a USB socket on your computer. The operating system detects the USB audio device "EPOS SDW 5 BS" or "EPOS SDW 3 BS" and installs the necessary drivers.

**Installing EPOS software**

The EPOS software allows you to add value to your EPOS products. EPOS Connect enables easy set-up, configuration and update of your SDW 5000 series.



- ▷ Download the software from [www.eposaudio.com/connect](http://www.eposaudio.com/connect).
  - ▷ Install the software. To install the software, you need administrator rights on your computer. If necessary, contact your IT department.
- To make calls via the computer:
- ▷ Install a softphone (VoIP Software), such as Skype for Business or ask your admin for support.

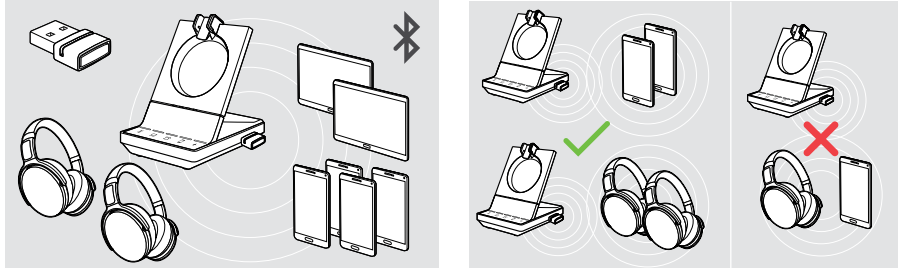
**Features with and without power supply connection**

Feature	Power via USB only	Power via USB + power supply unit
Full softphone functionality	✓	✓
Conferencing with multiple SDW 5000 headsets	✓	✓
Desk phone connection	✗	✓
USB port functions: Bluetooth headsets & mobile via dongle, USB headsets & speakerphones	✗	✓
Busylight support	✗	✓
Fast charging	✗	✓

### Connecting the base station to Bluetooth devices – BTD 800 USB only

With the dongle BTD 800 USB you can either connect mobile phones or headsets via Bluetooth to the base station.

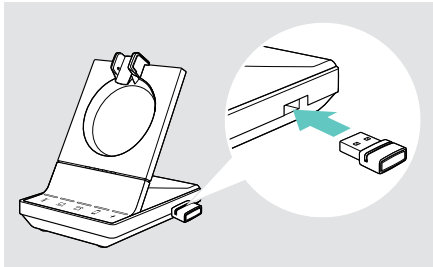
The dongle complies with the Bluetooth 4.2 standard. Pair Bluetooth devices that support the "hands free profile" (HFP), the "headset profile" (HSP) or the "advanced audio distribution profile" (A2DP).



The dongle can save up to eight paired Bluetooth devices. If you pair a ninth device, the saved connection profile of the least used Bluetooth device will be overwritten. If you want to re-establish a connection with this device, you have to pair the devices again.

After switch-on, the dongle automatically tries to connect to the two last connected Bluetooth devices – mobile phone and headset cannot be combined. You can only connect a third Bluetooth device after having switched off the first or the second Bluetooth device.

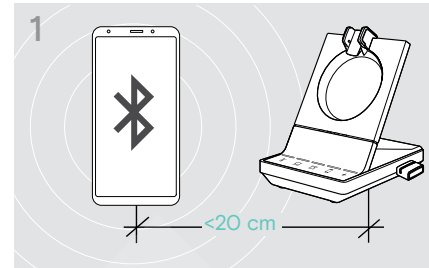
#### Connecting the Bluetooth dongle to the base station



The BTD 800 USB dongle is supplied together with the SDW 50X4 and SDW 50X6 bundles and also available as an accessory.

- ▷ Plug the dongle into the USB port of the base station.
- ▷ Follow the instructions in one of the two next chapters. New unused dongles switch automatically to pairing mode. The LED alternately flashes blue and red.

#### Pairing a mobile phone or tablet via Bluetooth

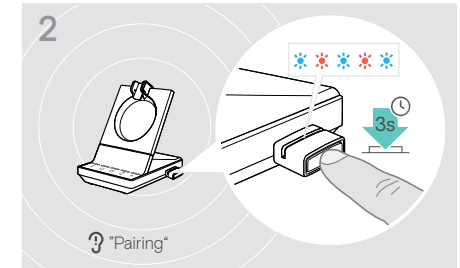


- ▷ Activate Bluetooth on your mobile phone or tablet (see the instruction manual of your device).

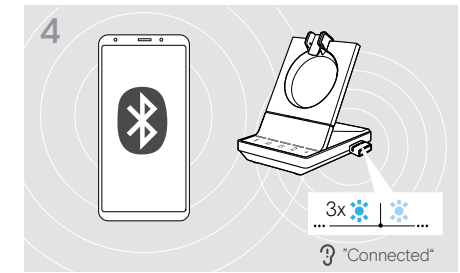


- keyword: 0000
- ▷ Start the search for new Bluetooth devices. All available devices in the proximity of your mobile phone or tablet are displayed.
- ▷ Select "BTD 800" to pair the dongle. If necessary, enter the default PIN code "0000".

**Questions?  
Click to Live Chat**



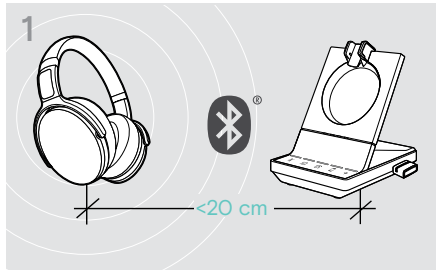
- ▷ Press and hold the dongle's button for 3 seconds to enter pairing mode. The LED alternately flashes blue and red.



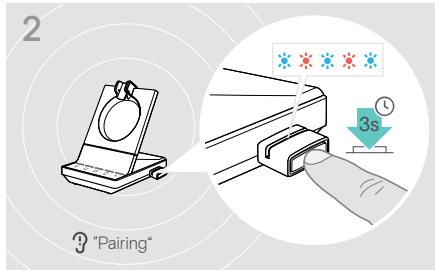
Once the Bluetooth devices are paired, the LED flashes 3 times blue and then lights up in a constant dim blue.



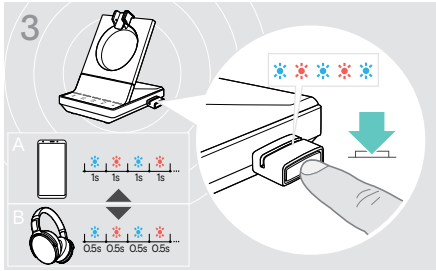
Pairing a headset via Bluetooth



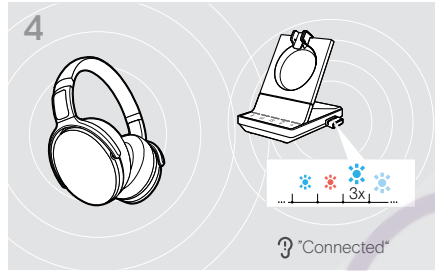
▷ Activate the pairing mode on your Bluetooth headset (see the instruction manual of your device).



▷ Press and hold the dongle's button for 3 seconds to enter pairing mode. The LED alternately flashes blue and red.



▷ Press the button again to switch between pairing mode for mobile phones A or headsets B.



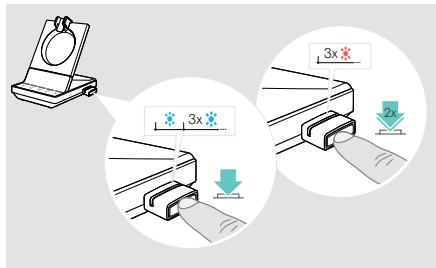
Once the Bluetooth devices are paired, the LED flashes 3 times blue and then lights up in a constant dim blue.

Clearing the list of previously paired devices

▷ Press and hold the dongle's button for 3 seconds to enter pairing mode. The LED alternately flashes blue and red.

▷ Double press the dongle's button. The LED flashes purple three times. The pairing list is cleared.

Reconnecting/disconnecting Bluetooth



To reconnect a Bluetooth device:  
▷ Tap the dongle's button. The LED lights up blue once and after that flashes 3 times blue. The LED is lit constantly in dim blue.

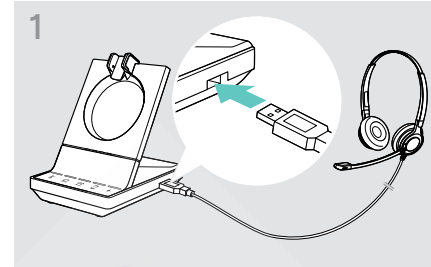
To disconnect a Bluetooth device:  
▷ Double tap the dongle's button. Bluetooth will be disconnected. The LED flashes 3 times red. The dongle starts flashing blue and searches for other Bluetooth devices.

**Questions?  
Click to Live Chat**

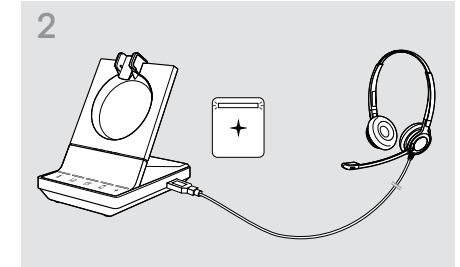
Connecting an optional USB headset or speakerphone

You can connect an EPOS USB headset or a USB speakerphone at any time, if for example the battery of your SDW headset is empty or to add other participants to your conference call.

Connecting a USB headset

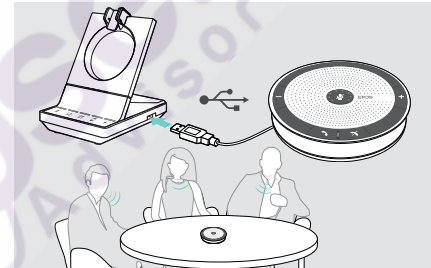


▷ Connect the headset to the USB socket on the base station.



The LED + lights up white.

Connecting a speakerphone



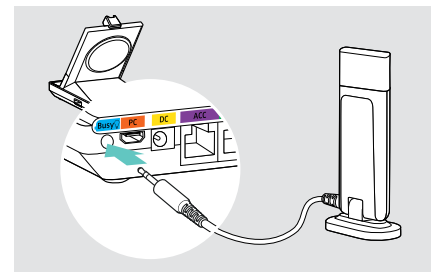
To use an external speaker with microphone such as the EPOS speakerphone SP 20:

▷ Connect your speakerphone to the USB socket of the base station. The LED + lights up white.

If you want to recharge the SDW headset - while using the speakerphone:

▷ Ensure the headset is docked before you initiate the call OR Double tap the icon + on the base station to transfer the call from the headset to the speakerphone.

Connecting an optional busylight



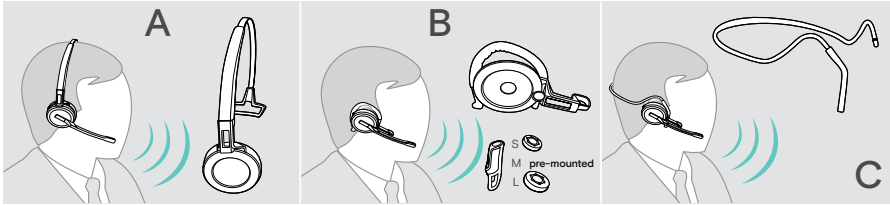
The busylight signals to your colleagues if you are available or in a call. The EPOS SDW Busylight (UI 10 BL) is available as an accessory.

▷ Connect the busylight to the Busy socket of the base station. The LED of the busylight lights up while the base station is switched on (see page 8).

▷ Attach the busylight to your monitor or to your desk - if required (see EPOS SDW Busylight Quick Guide).

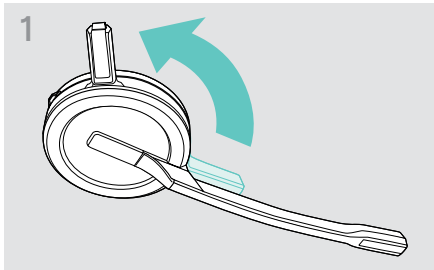
## Assembling and wearing the headset SDW 10 HS

You can wear the headset either with the headband, the ear hook or the neckband.

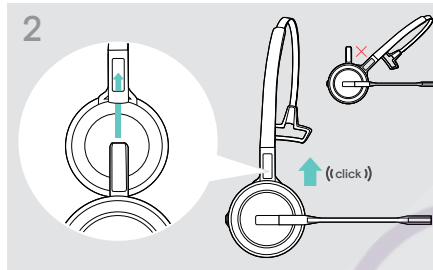


▷ Before assembly, remove the stickers showing where the charging pin should be inserted.

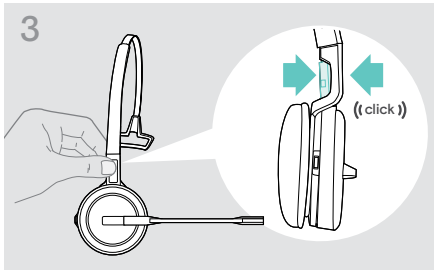
### Using the headset with the headband



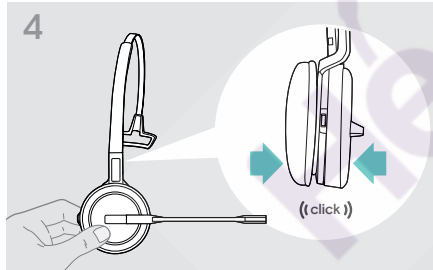
▷ Rotate the headset's charging pin away from the microphone boom.



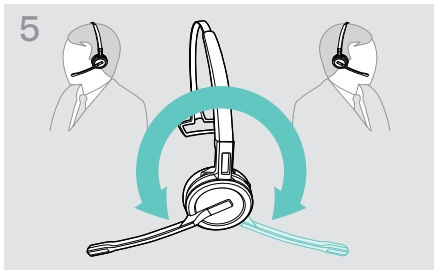
▷ Slide the charging pin into the holder of the headband.



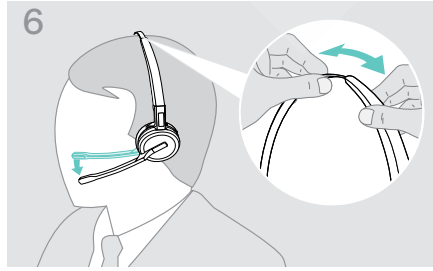
▷ Snap the charging pin into the headband.



▷ Snap the headset into the circular part of the headband.



▷ Rotate the microphone boom to change wearing side.

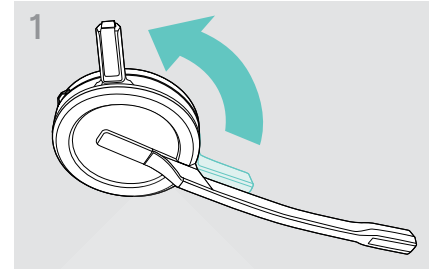


▷ Adjust the headset so that the ear pad rests comfortably on your right or left ear.

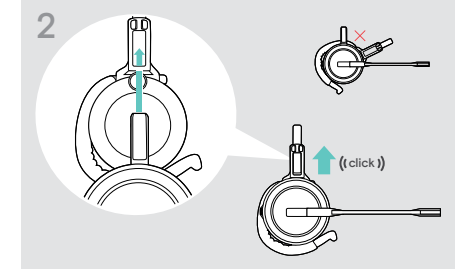
Questions?  
Click to Live Chat

## Using the headset with the ear hook

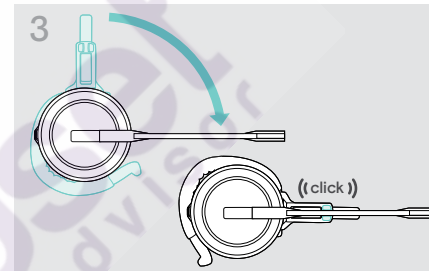
### Assembling the ear hook and the headset



▷ Rotate the headset's charging pin away from the microphone boom.

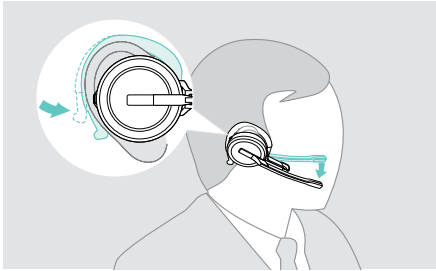


▷ Insert the charging pin into the holder of the wearing style adapter.

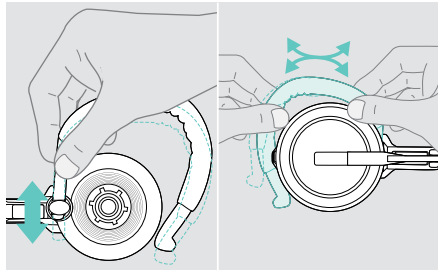


▷ Rotate the boomarm to snap it in the wearing style adapter.

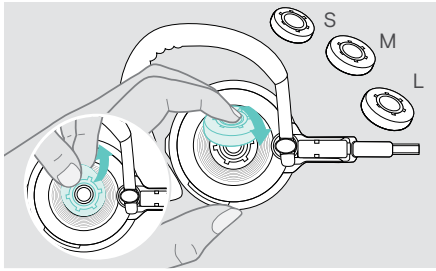
Adjusting the ear hook for perfect wearing comfort



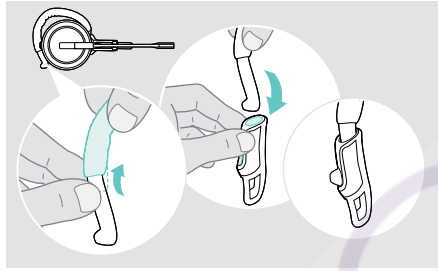
- ▷ Fit the ear hook around your ear with the ear bud placed in your ear.
- ▷ Bend the flexible ear hook so that the headset sits comfortably and securely on your ear.



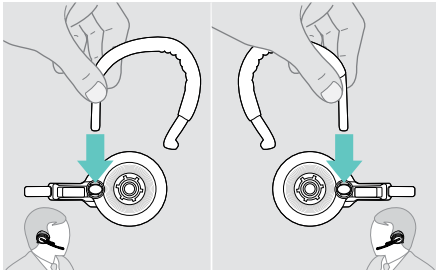
- ▷ Adjust the ear hook's height and shape.



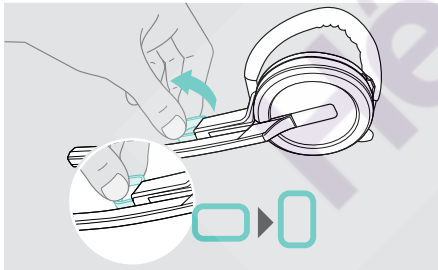
- ▷ Change ear bud size for optimal fit - if required.



- ▷ Mount the ear hook stabilizer for an improved fit - if required.



- ▷ Change wearing side - if required.

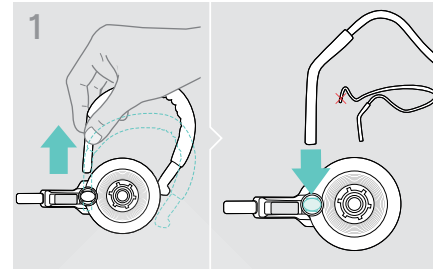


- ▷ Rotate the cheek spacer to increase or decrease the distance between the microphone and your mouth - if required.

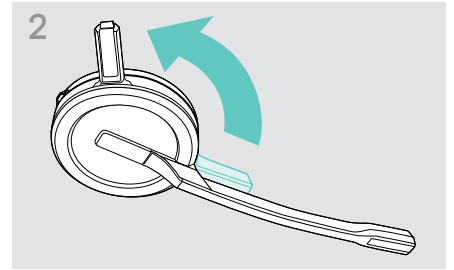
Questions?  
Click to Live Chat

Using the headset with the neckband

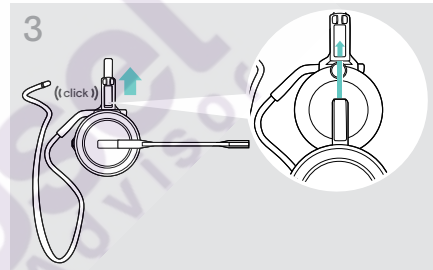
Assembling the neckband and the headset



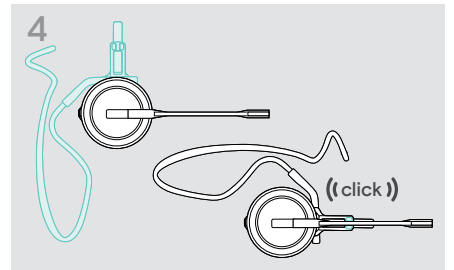
- ▷ Remove the ear hook from the wearing style adapter and insert the neckband instead. Make sure the inserted side has the holder mounted on the neckband.



- ▷ Rotate the headset's charging pin away from the microphone boom.

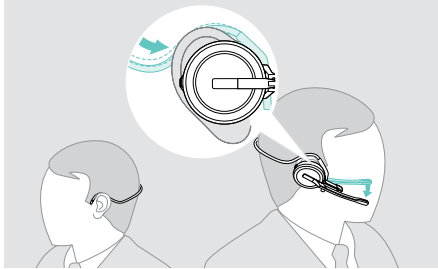


- ▷ Insert the charging pin into the holder of the wearing style adapter.

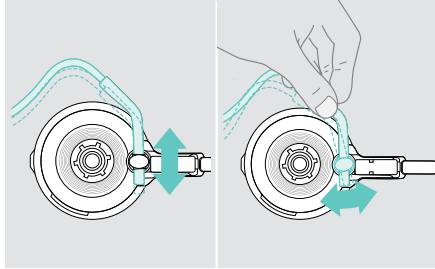


- ▷ Rotate the boomarm to snap it on the wearing style adapter like shown.

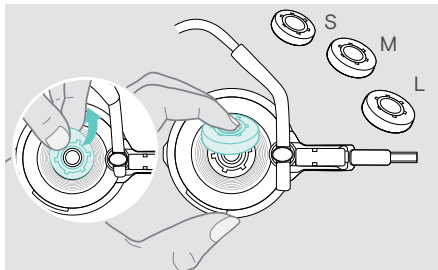
Adjusting the neckband for perfect wearing comfort



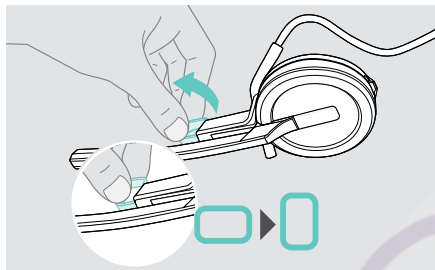
▷ Fit the neckband around your neck and both ears. Ensure that the ear bud is placed in your ear.



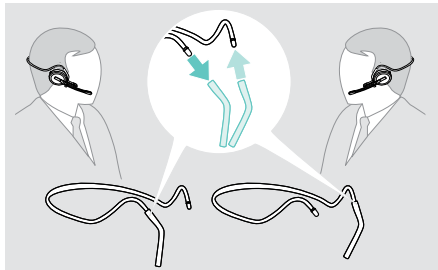
▷ Adjust the neckband's height and angle.



▷ Change ear bud size for optimal fit - if required.



▷ Rotate the cheek spacer to increase or decrease the distance between the microphone and your mouth - if required.



▷ Change wearing side - if required.

**Questions?  
Click to Live Chat**

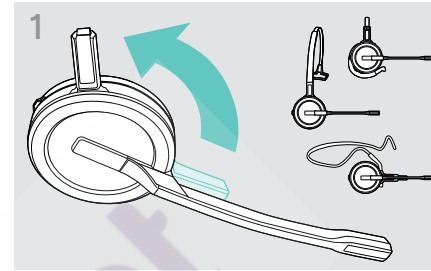
Detaching headband, ear hook or neckband

**CAUTION**

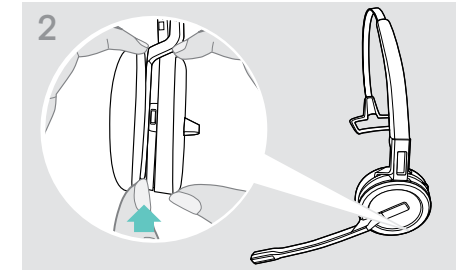
Improper handling can damage the product!

If the charging pin and microphone boom overlap while detaching, they can break.

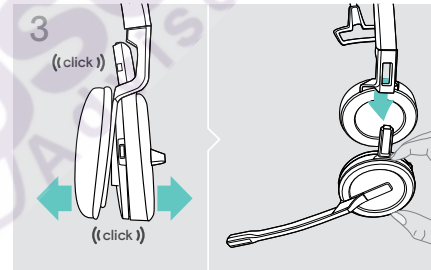
▷ Rotate the charging pin as shown.



▷ Rotate the holder with the charging pin away from the microphone boom.

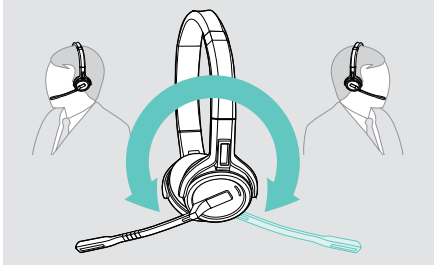


▷ Hold the headset with the one hand.  
▷ Slide one finger of the other hand into the small recess on the headband or wearing style adapter.

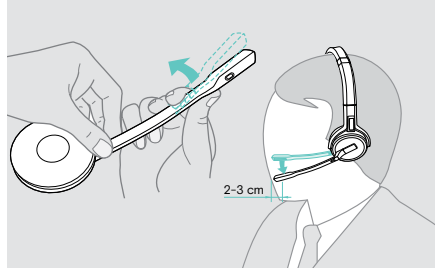


▷ Pull the two units apart from each other. The headset loosens and you hear a click.  
▷ Remove the headset from the holder.

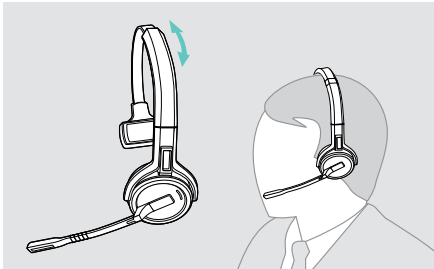
## Adjusting and wearing the headset SDW 30 HS | SDW 60 HS



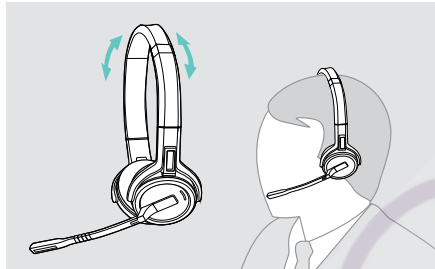
▷ Rotate the microphone boom to change wearing side.



▷ Bend and rotate the microphone boom so that the microphone is about 0.8" (2 cm) from the corner of your mouth.



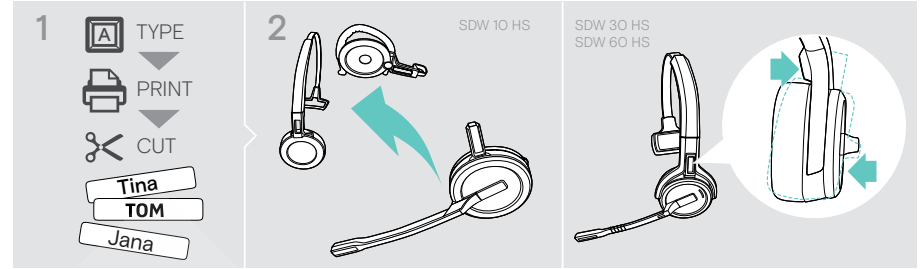
▷ Adjust the headset so that the ear pad rests comfortably on your right or left ear.



▷ Adjust the headset so that the ear pads rest comfortably on your ears.

**Questions?**  
**Click to Live Chat**

## Labeling the headset

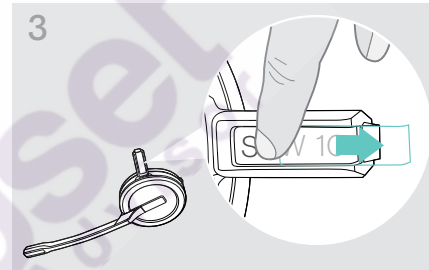


**SDW 10 HS:**

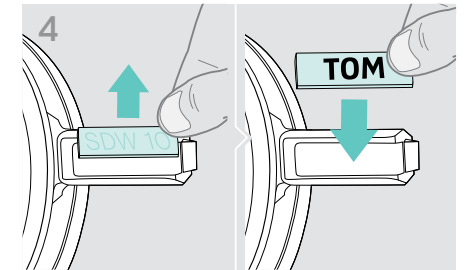
▷ Detach the headband or wearing style adapter from the headset (see page 23).

**SDW 30 HS | SDW 60 HS:**

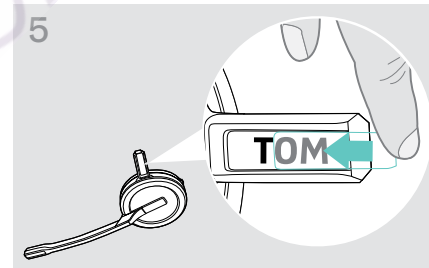
▷ Tilt the earcup with the boom arm as shown.



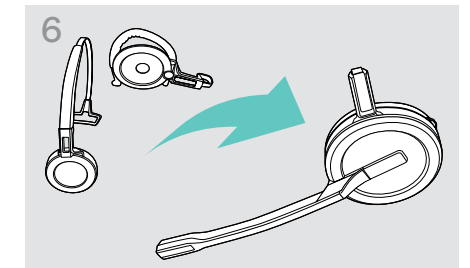
▷ Remove the cover.



▷ Replace the name plate.



▷ Slide the cover in the holder.



**SDW 10 HS:**

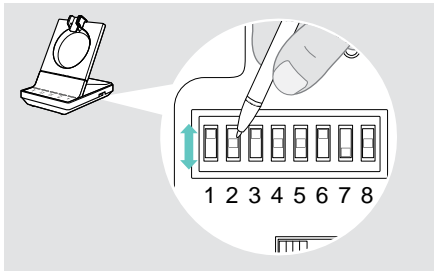
▷ Reassemble the headset with the headband or wearing style adapter (see page 18).

## Configuring the headset system

### Configuring the headset system using EPOS Connect or the DIP switches

You can adjust the headset system via the software [EPOS Connect](#) or the DIP switches on the base station. **Changes in EPOS Connect overwrite the DIP switch settings.**

[EPOS Connect](#) offers additional settings – marked with the adjacent icon in the following chapters. In addition to the settings described here, [EPOS Connect](#) offers further configurations – see options in the software.



To configure the system via the DIP switches:

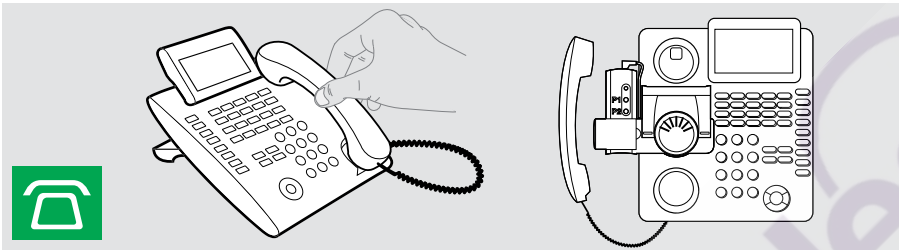
- ▷ Use a pointed object to set the DIP switches to the desired position. After a DIP switch is changed:
- ▷ Re-boot the system by disconnecting the power supply and USB cable shortly from the power.

To configure the system via [EPOS Connect](#):

- ▷ Connect the base station to your computer and install the required software (see page 13).
- ▷ Start [EPOS Connect](#).
- ▷ Click on “Settings” in the menu and choose your SDW 5000 device.
- ▷ Change to the desired values and save.

### Configuring the desk phone – DIP switches 1 and 2 – SDW 5 BS only

If you do not have a desk phone with an EHS solution, the HSL 10 II can be used for remote call control.



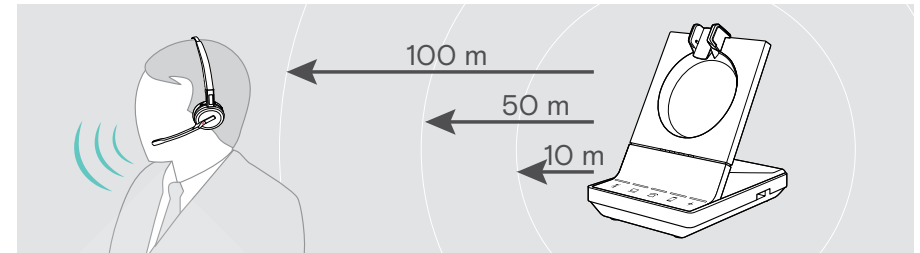
Switch position	Function	Switch position	Function
1 2 3 4 5 6 7 8	<b>DHSG mode</b> Call control with phones using DHSG standard	1 2 3 4 5 6 7 8	<b>Panasonic mode</b> Call control with Panasonic phones
1 2 3 4 5 6 7 8	<b>Manual mode</b> Manual operation* of headset or handset lifter HSL 10 II	1 2 3 4 5 6 7 8	<b>Auto link</b> Wireless link between headset and base station established automatically
1 2 3 4 5 6 7 8	<b>OptiPoint mode</b> Call control with OptiPoint phones	1 2 3 4 5 6 7 8	<b>MSH mode</b> Call control with phones using MSH standard
1 2 3 4 5 6 7 8	1 2 3 4 5 6 7 8	1 2 3 4 5 6 7 8	<b>No assigned modes</b>

\* For undetectable phones without call control: Touch the icon to manually establish a link to the desk phone. A second touch will close the link and allows to operate calls on other audio sources (/ ).

## Questions? Click to Live Chat

### Adjusting the radio range – DIP switch 3

If many DECT systems are operated in a confined space, interference can occur. In this case, you should change the radio range on the DECT systems.



Switch position	Function	Switch position	Function
1 2 3 4 5 6 7 8	<b>Long range</b> Up to 100 m indoors	1 2 3 4 5 6 7 8	<b>Short range</b> Up to 10 m indoors; for minimal interference with other DECT devices in dense environments
1 2 3 4 5 6 7 8	<b>Medium range</b> Up to 50 m indoors		

### Adjust how the system handles incoming calls – DIP switch 4



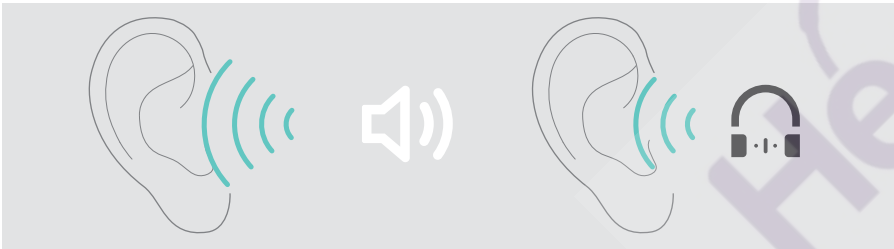
Switch position	Function	Switch position	Function
1 2 3 4 5 6 7 8	<b>Manual Hook</b> Manual answering of calls via hook button on headset	1 2 3 4 5 6 7 8	<b>Auto Hook</b> Automatic answering of incoming calls when headset undocked
1 2 3 4 5 6 7 8	<b>Open Audio Link</b> Manual answering and audio link to base station always open for fast response times		

Adjusting the audio quality – DIP switch 5



Switch position	Function	Switch position	Function
 1 2 3 4 5 6 7 8	<b>Best</b> <ul style="list-style-type: none"> <li>calls: Super Wideband</li> <li>Media playback: Super Wideband (SDW 10 HS) Full band (SDW 30 &amp; 60 HS)</li> </ul>	 1 2 3 4 5 6 7 8	<b>Good</b> <ul style="list-style-type: none"> <li>calls: Narrowband</li> <li>Media playback: Narrowband</li> <li>max battery and density performance</li> </ul>
 1 2 3 4 5 6 7 8	<b>Better</b> <ul style="list-style-type: none"> <li>calls: Wideband</li> <li>Media playback: Super Wideband (SDW 10 HS) Full band (SDW 30 &amp; 60 HS)</li> <li>max talk time performance</li> </ul>		<b>Better – Wideband High Density</b> <ul style="list-style-type: none"> <li>like “Better” but optimized for max density performance</li> <li>Media playback: Wideband</li> </ul>
			<b>Narrowband Desk Phone</b> changes desk phone audio quality to narrowband, while enjoying a “better” sound with other devices

Limiting the volume – DIP switch 6



Switch position	Function	Switch position	Function
 1 2 3 4 5 6 7 8	off	 1 2 3 4 5 6 7 8	<b>AU limiter</b> Compliant with Directive AS/ACIF G616:2006
 1 2 3 4 5 6 7 8	<b>EU/US limiter</b> Compliant with Directive 2003/10/EC		

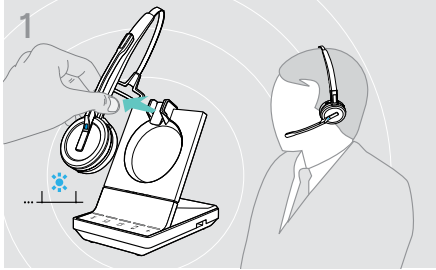
Questions?  
Click to Live Chat

Adjusting the ring tone and ring tones volume of the base station – DIP switch 7 and 8

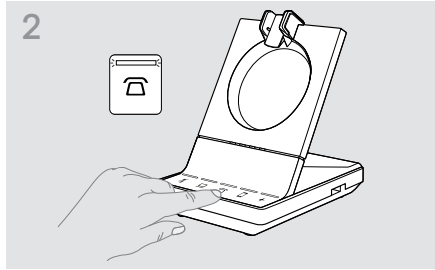


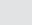
Switch position	Function	Switch position	Function
 1 2 3 4 5 6 7 8	<b>Ringtone volume High</b>	 1 2 3 4 5 6 7 8	<b>Ring tone 1 Active</b>
 1 2 3 4 5 6 7 8	<b>Ringtone volume Low</b>	 1 2 3 4 5 6 7 8	<b>Ring tone 2 Active</b>
 1 2 3 4 5 6 7 8	<b>Ringtone volume Off</b>	 1 2 3 4 5 6 7 8	<b>Ring tone 3 Active</b>
	<b>Ringtone volume</b> <ul style="list-style-type: none"> <li>Very low</li> <li>Medium</li> </ul>		

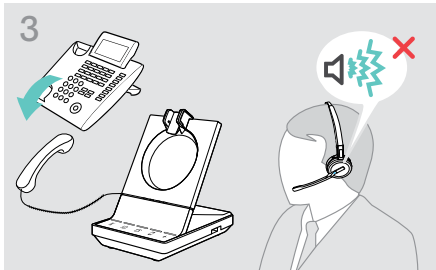
### Adjusting the audio signal for desk phones using the ABC switch – SDW 5 BS only



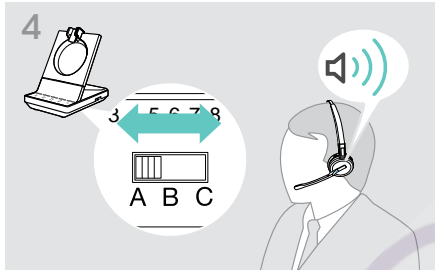
- ▷ Put on the headset.



- ▷ Press the button  on the base station.



- ▷ Lift the headset.  
You hear a dial tone.

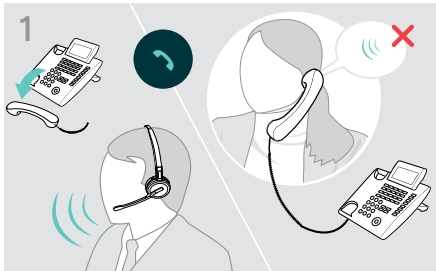


- ▷ Set the ABC switch to the position A, B or C so that you can hear a clear dial tone in the headset.

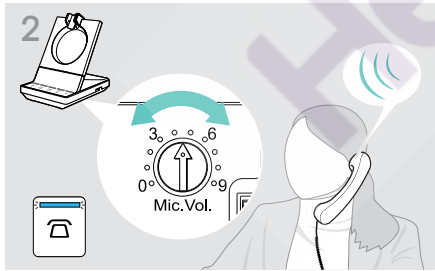
### Adjusting the transmission volume

#### Adjusting the microphone volume for the connected desk phone – SDW 5 BS only

By default, the microphone volume control is set to 4. This setting is suitable for most telephones.



- ▷ Make a call to someone who will help you find the correct sensitivity setting for your microphone (see page 27).



- ▷ Turn the microphone volume control so that the other party can hear you at a comfortable level.

#### Adjusting the microphone volume for the connected computer

- ▷ Activate the option "Automatically adjust microphone sensitivity" in the settings of your softphone – if available.  
▷ Adjust the microphone sensitivity via your operating system, so that the other party can hear you at a comfortable level (see Help function of your operating system).

**Questions?**  
**Click to Live Chat**

## Setting up and using the headset

### Adjusting the volume



#### CAUTION

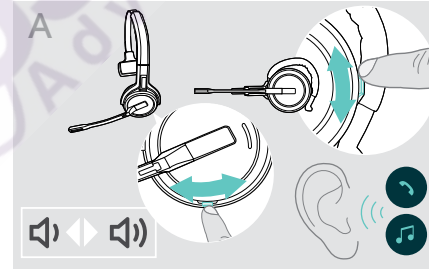
#### Hearing damage due to high volumes!

Listening at high volume levels for long periods can lead to permanent hearing defects.

- ▷ Set the volume to a low level before putting on the headset.  
▷ Do not continuously expose yourself to high volumes.



#### Adjusting the volume of the audio signal



- ▷ Make a call (see page 35) or play media (see page 44).  
▷ Move the Mute & Volume button as shown to adjust the volume.

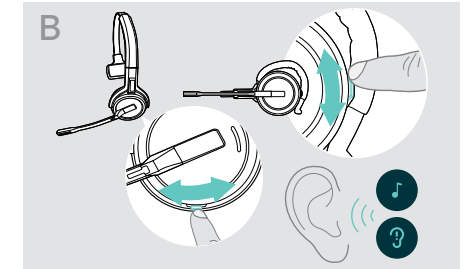
You can adjust two independent volume settings for the headset:

- speaker volume, audio signal
- volume for the ring tone, the beeps and the voice prompts

The direction of the volume buttons could be swapped.

- ▷ Put on the headset.  
▷ Choose your audio source.  
The corresponding LED lights up.

#### Adjusting the volume of the ring tone, the beeps and the voice prompts



- ▷ Make sure that the headset is in idle mode (no active call or media reproduction).  
▷ Move the Mute & Volume button as shown to adjust the volume.

When the minimum or maximum volume is reached, the voice prompt "Volume min" or "Volume max" is announced in the headset. When the voice prompts are disabled, you hear a beep in the headset instead.

#### Adjusting the headset's microphone volume for softphones

- ▷ Initiate a call on your connected device to someone who will help you find the correct volume setting for your microphone.  
▷ Change the microphone volume in your softphone application and/or in your PC audio application.

#### Adjusting the sidetone

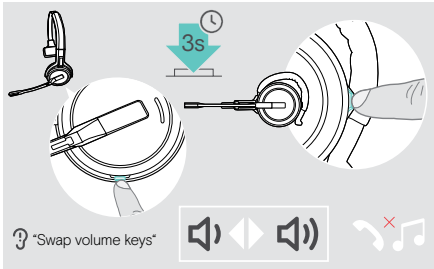


The sidetone in the SDW headsets can be adjusted via EPOS Connect.



### Swapping the direction of the volume buttons

You can change the direction of the Volume button's up/down function if, for example, you want to wear the headset on the other ear. **SDW 10 HS:** If the motion sensor is enabled, the volume keys automatically swap direction when you change the wearing side.

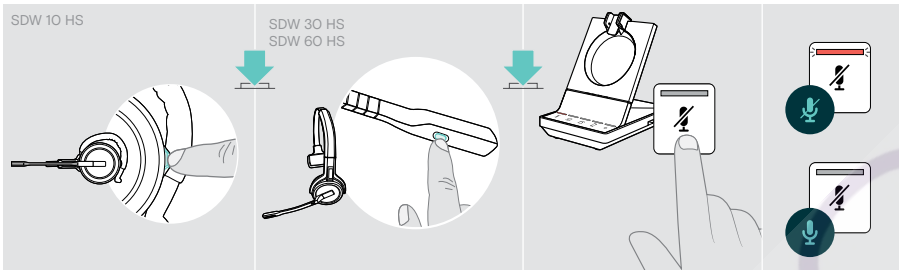


- ▷ Make sure that the headset is in idle mode (no active call or media reproduction).
- ▷ Press and hold the Mute & Volume button. The direction of the button's volume up/down function is changed. The voice prompt "Swap volume keys" is announced in the headset.

**SDW 60 HS:**  
Stereo channels left/right will be changed too.

You can also change this setting via EPOS Connect.

### Muting the headset's microphone



- ▷ Press the Mute & Volume button on the headset **OR** SDW 30 HS | SDW 60 HS: Mute button on the boom arm **OR** Touch the Mute button on the base station.

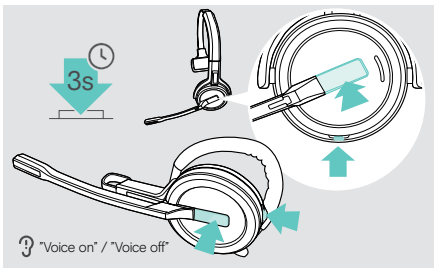
#### Muting the microphone

The microphone is muted and the LED lights up red. The voice prompt "Mute on" is announced.

#### Unmuting the microphone

The muting is canceled and the LED switches off. The voice prompt "Mute off" is announced.

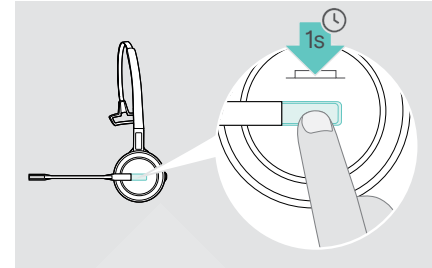
### Enabling/disabling voice prompts



- ▷ Take the headset out of the base station.
  - ▷ Simultaneously press and hold the hook and mute button until you hear 2 beeps, then release the button. The voice prompts are now activated/deactivated and the voice prompt "Voice on" or "Voice off" is announced in the headset.
- If the voice prompts are deactivated, the headset emits beeps.

## Questions? Click to Live Chat

### Verifying battery life



You can retrieve information on the remaining battery life at any time except when you are on a call or listening to media:

- ▷ Press the hook button for 1 second. The remaining battery life is announced.

It is also possible to verify the remaining headset battery life at any time via the base station battery LEDs.

#### Information announced

#### Remaining battery life

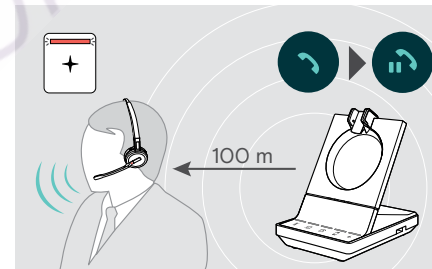
"More than eighty percent battery left"	> 80%
"More than sixty percent battery left"	> 60%
"More than forty percent battery left"	> 40%
"More than twenty percent battery left"	> 20%
"Less than twenty percent battery left"	< 20%

"Recharge headset"

less than 15 minutes talk time; automatic voice prompt

- ▷ Recharge headset (see page 46).

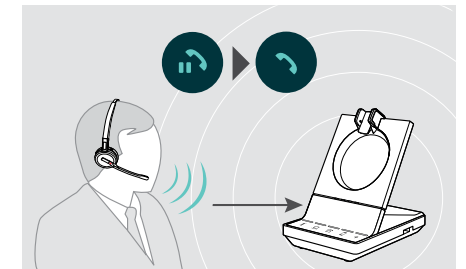
### If you leave the DECT or Bluetooth range



In office buildings, the range between DECT headset and base station is up to 100 m. Further information on how to adjust radio range is given on page 27.

The range between a Bluetooth headset and base station or between the mobile phone and the base station/dongle is device dependent.

If the audio quality deteriorates during a call or the link breaks down completely, the voice prompt "device disconnected" is announced in the headset. The LED on the headset is off and the LED + on the base station lights up red.



- ▷ Re-enter the radio range of the base station to resume the call.

If your softphone supports call control, the call will automatically be ended 60 seconds after leaving the radio range.

## Making calls using the headset system

In the following chapters the most important functions of the connected devices will be explained. Some functions depend on the configuration of the base station (see page 26).

For information on how to set up a teleconference combining multiple phone calls or headsets see chapter "Setting up conference call" on page 40.

If the optional EPOS SDW Busylight is connected (see page 17) the current state will be indicated by the busylight (see page 8).

### Preparing calls - initial settings



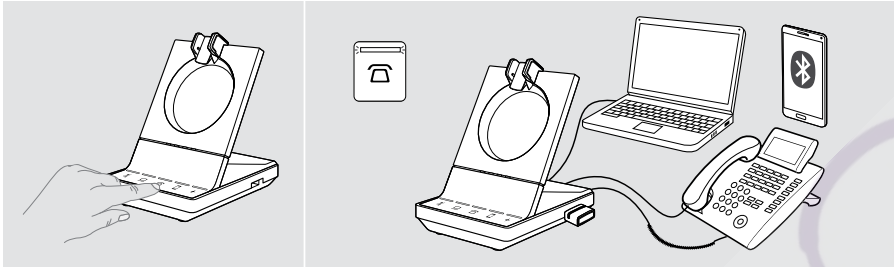
**Call control** – manage calls directly via the headset:



- ▷ Visit our website at [www.eposaudio.com](http://www.eposaudio.com) and check whether your softphone is supported.
- ▷ Install our free software to enable call control support – if required.





- ▷ Ensure your BT-D 800 USB dongle is paired and connected to your mobile phone (see page 14).

### Selecting audio source – fixed line phone/ computer/ mobile phone



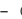





- ▷ Touch the icon of the desired audio source on your base station  .
- The chosen audio source is in focus and the LED lights up white.

If for example  is in focus, press the hook button (or touch the icon  again) to initiate a call via your fixed line phone – depending on the settings. The fixed line phone will remain your default audio source for outgoing calls until you change it.




## Questions? Click to Live Chat

### Making a call

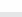


- ▷ Put on the headset.
- ▷ Press the hook button on the headset **OR** touch the icon on your base station to:
  - Computer : launch your softphone
  - Desk phone : activate the dial tone\*
  - Mobile phone : initiate voice assistant
- ▷ Dial the desired number or choose your contact. The connection is established. The base station LED    lights up blue.

\* For undetectable phones without call control (Manual mode, see page 26):

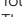
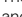
- ▷ Touch the icon  to manually establish a link to the desk phone. A second touch will close the link and allows to operate calls on other audio sources ( ).

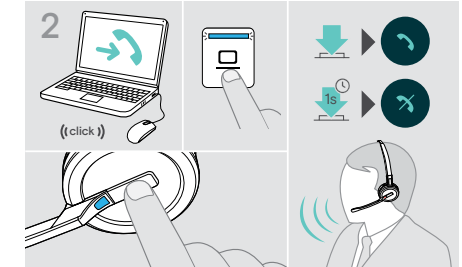
### Accepting/rejecting a call

You hear a ringing in the headset, on the base station\*, desk phone\* or mobile phone\* (\*if enabled). The base station LED    flashes blue.



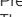


#### Accept a call\*

- ▷ Accept the call via the audio source **OR** Press the hook button on the headset **OR** Touch the icon   of the flashing LED. The connection is established. The LED stops flashing and is fixed blue.



#### Reject a call

- ▷ Press the icon    of the flashing LED for 1 second **OR** Press the hook button on the headset for 1 second. The voice prompt "Call rejected" is announced. The LED stops flashing and is fixed white.



While the SDW headset is docked for charging, the call can be accepted via the connected Bluetooth/USB headset or speakerphone.

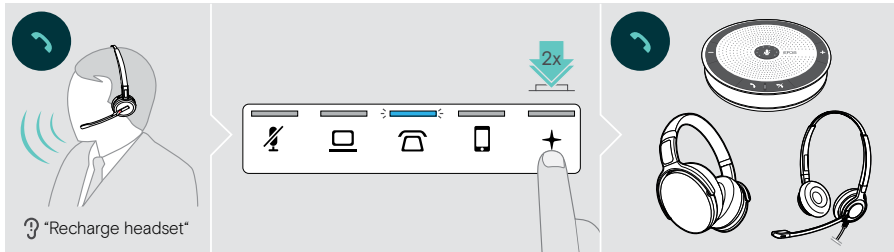
\*For automatic answering functionality, enable "Auto Hook" (see page 27) or motion sensor (see page 45).

### Transferring calls to connected devices

#### Transferring the call to the optional Bluetooth/USB headset or speakerphone

To transfer an active call, e. g. if the headset battery is almost flat:

- ▶ Double tap the icon **+** on the base station.  
The call is transferred to the Bluetooth/ USB headset or speakerphone.



To switch an active call back to the SDW headset:

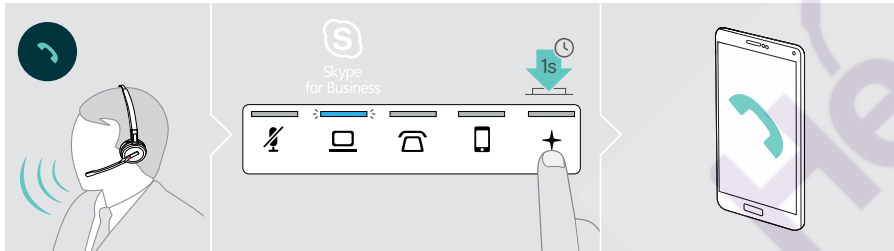
- ▶ Undock the SDW headset from the base station.  
The call is automatically transferred to the SDW headset.

If the SDW headset is already undocked from the base station:

- ▶ Double tap the icon **+** on the base station.  
The call is transferred to the SDW headset.

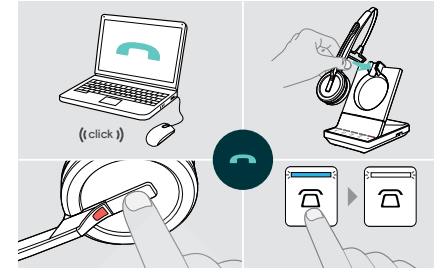
#### Transferring a softphone call to the mobile phone – “Skype for Business” only

- ▶ Set up your mobile phone number in the “Skype for Business” options menu. For more information visit the “Skype for Business” support website.
- ▶ Touch the icon **+** on the base station for 1 second to transfer the call to your mobile phone.



## Questions? Click to Live Chat

### Ending a call



- ▶ End the call via the audio source **OR**
- ▶ Place the headset into the charging cradle of the base station **OR**  
Press the hook button on the headset **OR**  
Touch the icon on the base station.

The call is ended. The base station LED lights up white. If the other party hangs up, your audio source and your headset become automatically ready to receive the next call.

### Redialing

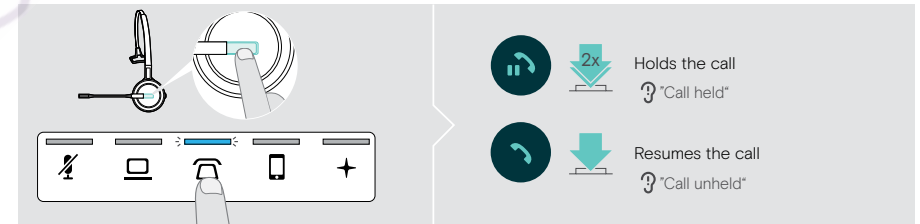
- ▶ Double tap the corresponding icon on the base station **OR** the hook button on the headset.



- Redials the last number  
 “Redialing”
- Cancels redialing

### Putting a single active call on hold

- ▶ Double tap the corresponding icon on the base station **OR** the hook button on the headset.



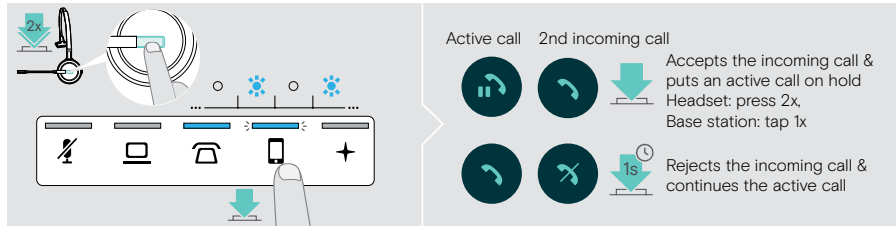
- Holds the call  
 “Call held”
- Resumes the call  
 “Call unheld”

### Managing multiple calls – two calls from two audio sources

#### Accepting/rejecting a second call

If you receive a call on a second device while you are in an active call, the corresponding LED flashes.

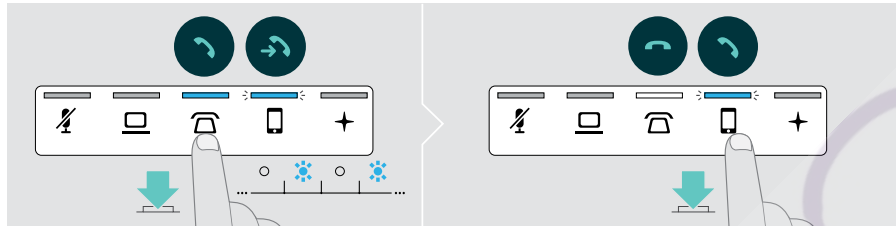
- ▶ Touch the icon on the base station corresponding to the flashing LED
- OR double tap the headset's hook button:



#### Ending the active and accepting the incoming call

If you receive a call on a second device while you are in an active call, the corresponding LED flashes.

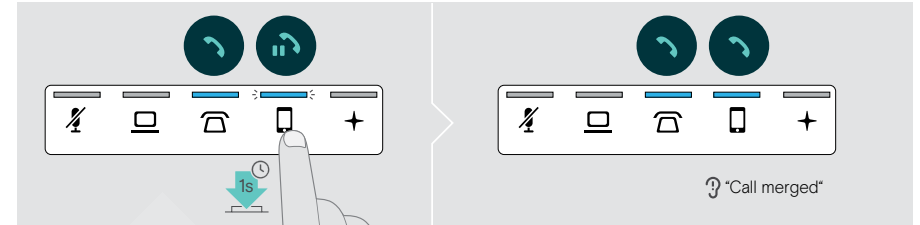
- ▶ Touch the icon of the blue lit-up LED on the base station to end the active call.
- ▶ Touch the icon corresponding to the flashing LED to accept the call.



## Questions? Click to Live Chat

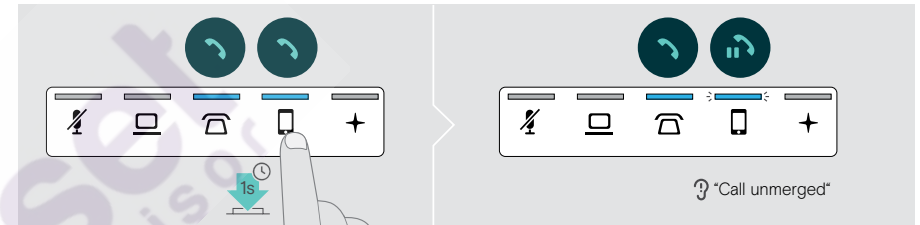
#### Merging a held call into an active call – Mini conference

- ▶ Touch the icon of the held call for 1 second (LED stops flashing when merged).



#### Unmerging a call from a Mini conference and put in on hold

- ▶ Touch the icon of the audio source with the call you want to put on hold for 1 second (LED of unmerged call starts flashing).

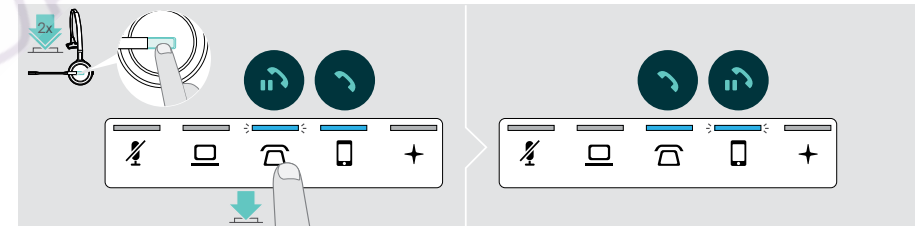


#### toggling between active and held call

- ▶ Tap the icon of the held call (flashing LED) OR double tap the headset's hook button.

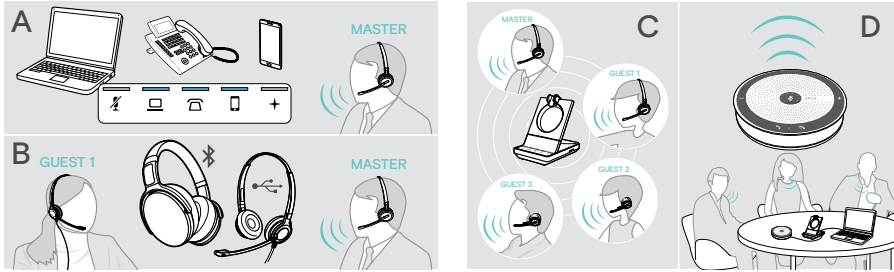
If both calls are on the same source:

- ▶ Double tap the icon of the active call to toggle between the calls.



## Setting up conference call

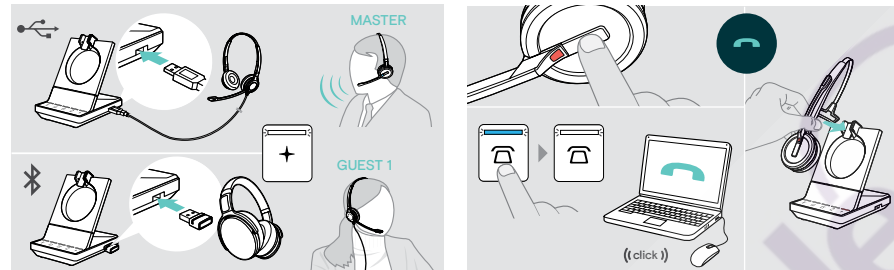
With one base station, you can:



- **A** merge up to three calls from the **connected audio sources** into one teleconference (see previous chapter).
- **B** set up a **small conference** with an SDW 5000 headset and an additional EPOS USB or Bluetooth headset.
- **C** a **large conference** with up to four SDW 5000 headsets.
- **D** set up a conference with a EPOS **USB speakerphone** (e. g. SP 20).

All conferencing options can be combined. It is for example possible to set up a large conference with 2 audio sources merged, where multiple SDW headsets and one Bluetooth or USB device is connected.

### Setting up a small conference via USB or Bluetooth headset



- ▷ Put on the MASTER headset.
- ▷ Connect your USB or Bluetooth headset (see page 16/17) with the base station. The LED + lights up white.
- ▷ Press the hook button on the MASTER headset within 10 seconds to add the GUEST headset. The voice prompt "Conference pairing successful" is announced in the GUEST headset.
- ▷ Call the other party (see page 34).

To **end the call** but **keep the conference**:

- ▷ End the call via your audio source, the base station or the MASTER headset. All conference participants remain connected and a new call can be initiated with them.

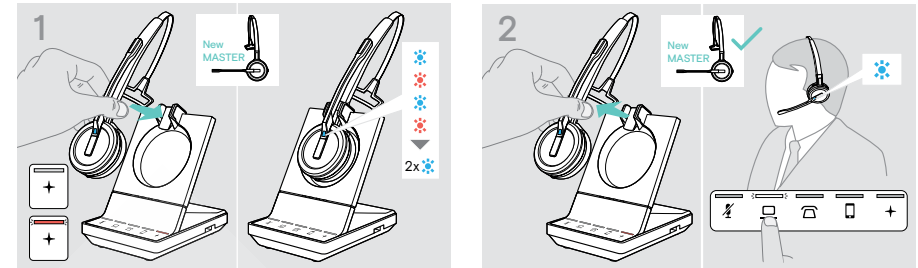
To **end the call and the conference**:

- ▷ End the call via your audio source, the base station or the MASTER headset.
- ▷ Place the MASTER headset in the magnetic holder of the base station to disconnect all conference participants.

## Questions? Click to Live Chat

### Setting up a large conference with up to 4 SDW series headsets

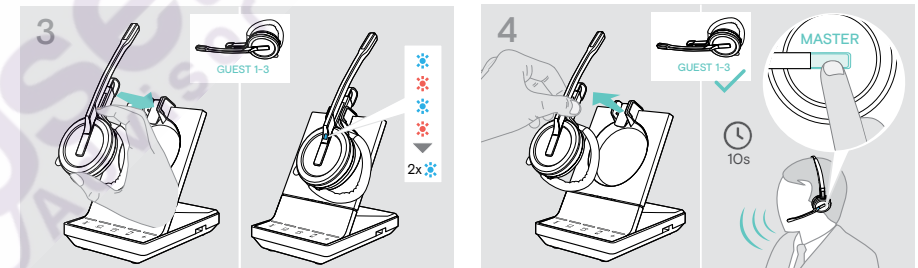
The headset system allows you to make a conference call with up to 4 SDW 5000 headsets. The first paired headset (MASTER) is used to control the call.



If you want to use a new MASTER headset:

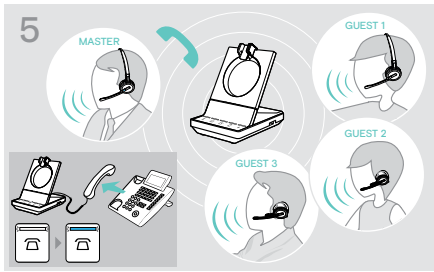
- ▷ Place the headset into the base station. The Headset LED alternately flashes blue/red until a link to the base station is established. The Headset LED flashes blue twice.

- ▷ Put on the MASTER headset.
- ▷ Change audio source - if required (see page 34).

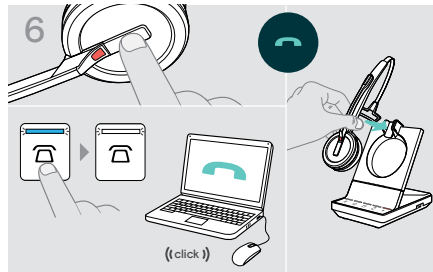


- ▷ Press and hold the Mute & Volume button while placing the GUEST headset into the base station of the MASTER headset. The Headset LED alternately flashes blue/red until a link to the base station is established. The Headset LED flashes blue twice. The voice prompt "Conference pairing" is announced in the MASTER headset.

- ▷ Take the GUEST headset out of the base station.
- ▷ To add the GUEST headset to the conference call, press the hook button on the MASTER headset within 10 seconds. The voice prompt "Conference pairing successful" is announced in the GUEST headset.
- ▷ Add additional GUEST headsets - if required.



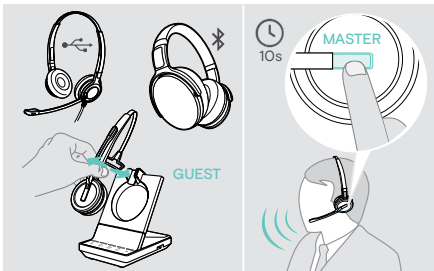
- ▷ Call the other party.  
The LED / / lights up blue on the base station. The GUEST can leave the call by pressing the hook button on the GUEST headset.



- To **end the call** but **keep the conference**:
  - ▷ End the call via your audio source, the base station or the MASTER headset.  
A new call can now be initiated with the same conference participants.
- To **end the call and the conference**:
  - ▷ End the call via your audio source, the base station or the MASTER headset.
  - ▷ Place the MASTER headset in the magnetic holder of the base station to end the conference.

**i** "easy pairing" To subsequently use the GUEST headset with other base stations, place the GUEST headsets into the other base stations. The Headset LED alternately flashes blue/red until a link is established.

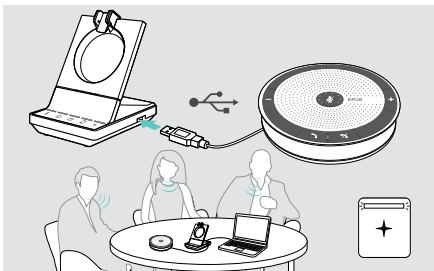
#### Adding a GUEST headset during a call with the MASTER headset



- ▷ Connect your USB or Bluetooth headset (see page 16/17) with the base station **OR** Dock and undock the GUEST SDW 5000 headset (no need to press the Mute button).
- ▷ Press the hook button on the MASTER headset within 10 seconds to add the GUEST headset.  
The voice prompt "Conference pairing successful" is announced.  
The GUEST can leave the conference by ending the call on the GUEST headset.

#### Making a conference call with a EPOS USB speakerphone

If the SDW headset is docked in the base station the speakerphone becomes the MASTER. If the SDW headset is undocked, the speakerphone works as GUEST.



- ▷ Connect the speakerphone to the USB socket on the base station.  
The LED **+** lights up white.
- ▷ Choose your audio source(s) (see page 34).
- ▷ Call the other party.  
Depending on the audio source the LED / / lights up blue on the base station.
- ▷ End the call via your audio source or speakerphone and unplug the speakerphone from the USB socket.

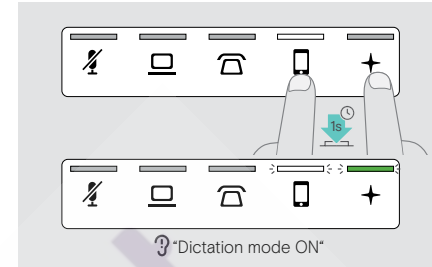
## Questions? Click to Live Chat

### Using the dictation mode

#### Recording desk or mobile phone calls with the Dictation mode

SDW 5000 offers a Dictation mode which allows recording of phone calls via an application on your computer. In this mode the microphone is always open towards the computer, so that a call on the desk or mobile phone can be recorded.

To switch the Dictation mode on:



- ▷ Make sure, that the system is in idle mode (no active call or media).
- ▷ Touch the icon or and the **+** on the base station simultaneously for 1 second.  
The Dictation mode is switched on. The voice prompt "Dictation mode ON" is announced. The base station LED **+** lights up green and the selected audio source LED or lights up white.

The Dictation mode will stay on if the headset is docked.

Calls can only be received and made from the selected audio source (desk or mobile phone). Other audio sources are inactive.

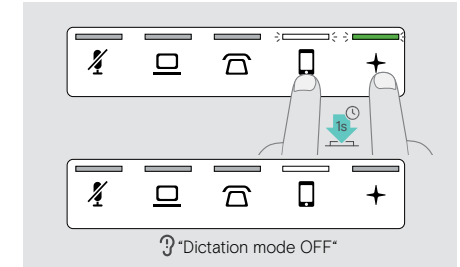
If you receive a call on an inactive source:

- ▷ Switch the Dictaphone mode off and accept the call.

#### Recording computer's audio

You can record calls or any audio signal directly via a computer application. Listening to recordings on a computer is only possible, while Dictation mode for phones is switched off (see above).

To switch the Dictation mode off:

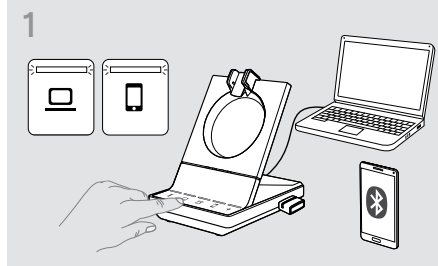


- ▷ Touch the icon or (LED white) and the **+** on the base station simultaneously for 1 second.  
The Dictation mode is switched off. The voice prompt "Dictation mode OFF" is announced. The base station LED **+** switches off.

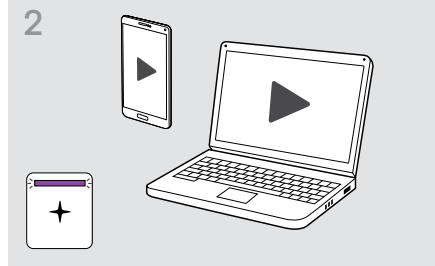
Dictation mode will also be switched off if the base station is powered off or re-booted.

## Listening to media using the headset

You can listen to media from your computer or mobile device.  
 If you use the Bluetooth dongle BTD 800 with a mobile phone:  
 ▶ Activate Bluetooth on your mobile phone.

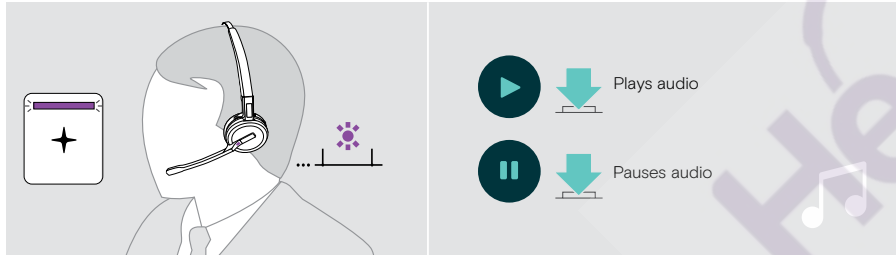


- ▶ Touch the or icon. The corresponding LED lights up white.
- ▶ Put on the headset.



- ▶ Play the media on your audio source. The headset LED and the LED + on the base station light up purple. The LED is off per default and can be enabled via EPOS Connect.

**i** If you receive and accept a call, media playback is paused and restarts after the call - if supported by the connected device.

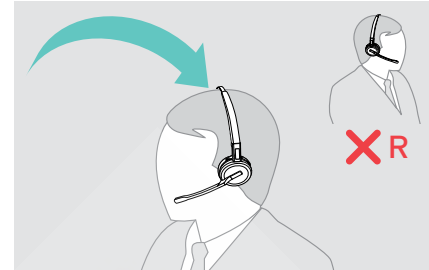


**Questions?  
Click to Live Chat**

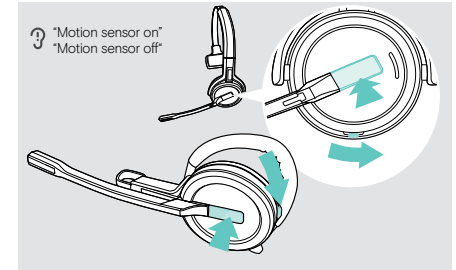
## Using the motion sensor

The headset is equipped with a motion sensor that registers when the headset is put in or out of rest position.

### Enabling/disabling the motion sensor



- ▶ Put on the headset and place the ear cup on the left ear.

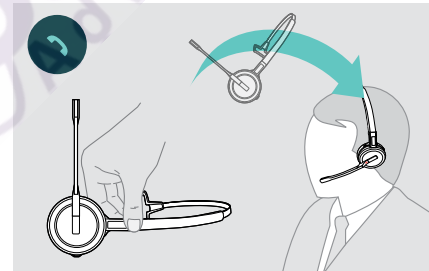


- ▶ Press the volume button as shown and simultaneously the hook button. Hold the buttons until you hear three beeps. The motion sensor is enabled/disabled and you can choose your wearing side. The voice prompt "Motion sensor on" or "Motion sensor off" is announced.



You can also change this setting via EPOS Connect.

### Using the motion sensor



- ▶ Lift the headset from the desk and put it on. The sensor registers motion and the incoming call is accepted.

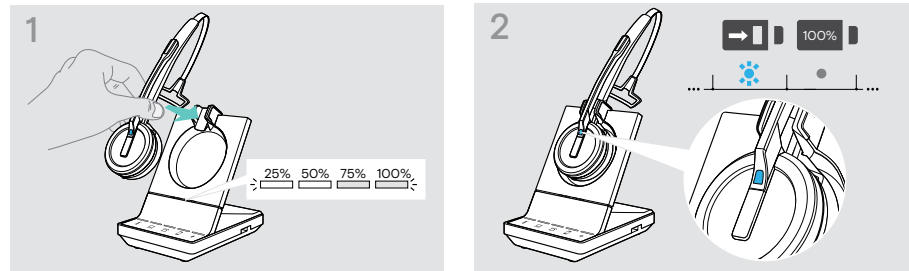
### SDW 30 HS | SDW 60 HS:

Media reproduction will be paused when you lay down the headset and resumed when you put on the headset again.

## Charging the headset and storing the headset system

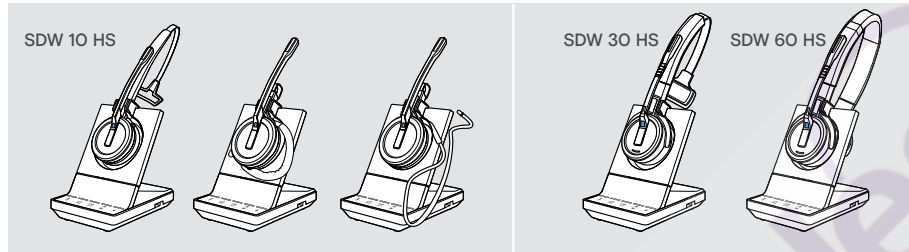
### Charging the headset

Always place the headset at the base station to ensure that it is fully charged when needed. Shortly before the rechargeable battery is about to run flat (15 minutes remaining) the voice prompt "recharge headset" is announced in the headset. If the headset has not been used for 12 hours, it will switch off in order to conserve battery power. To switch it on again, press the headset's hook button. This feature can be disabled via [EPOS Connect](#).



▶ Place the headset into the magnetic holder of the base station. The headset battery status LEDs on the base station indicate the charge status.

During charging the Headset LED lights up blue. The LED switches off when the headset is fully charged.



#### Charging overview SDW 10 HS

LED segment	Required charging time	Corresponds to a talk time of		
		Super Wideband	Wideband	Narrowband
	approx. 10 minutes	approx. 1 hour	approx. 2 hours	approx. 3 hours
	approx. 20 minutes	approx. 2 hours	approx. 4 hours	approx. 6 hours
	approx. 40 minutes	approx. 3 hours	approx. 6 hours	approx. 9 hours
	approx. 60 minutes	approx. 6 hours	approx. 8 hours	approx. 10 hours

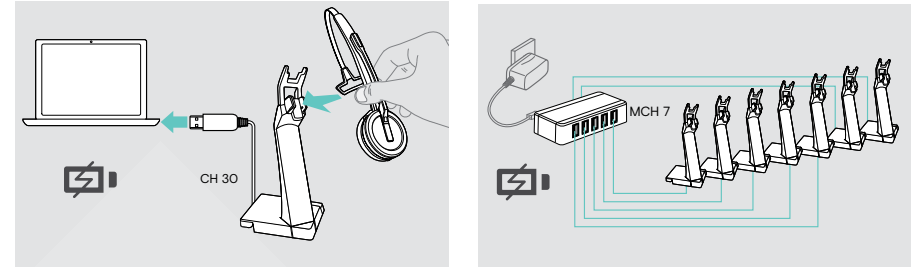
#### Charging overview SDW 30 HS | SDW 60 HS

LED segment	Required charging time	Corresponds to a talk time of		
		Super Wideband	Wideband	Narrowband
	approx. 10 minutes	approx. 1 hour	approx. 2 hours	approx. 2 hours
	approx. 20 minutes	approx. 2 hours	approx. 3 hours	approx. 4 hours
	approx. 40 minutes	approx. 5 hours	approx. 7 hours	approx. 8 hours
	approx. 90 minutes	approx. 9 hours	approx. 11 hours	approx. 14 hours

**Questions?  
Click to Live Chat**

### Charging the headset using the CH 30 charger | Charging several headsets simultaneously

The CH 30 headset charger and the MCH 7 multi USB power source are optional accessories. The CH 30 allows you to charge additional SDW headsets, e.g. for sharing the same base station when working in shifts. Several CH 30 in connection with the MCH 7 allow to charge up to 7 headsets simultaneously.

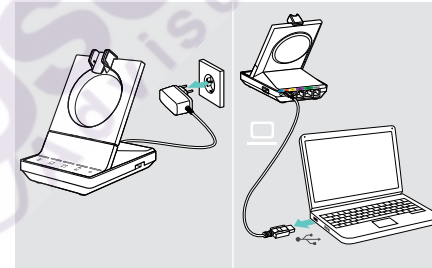


▶ Refer to the Quick Guide of the CH 30 or MCH 7 for more information.

### Switching the headset system off during extended non-use

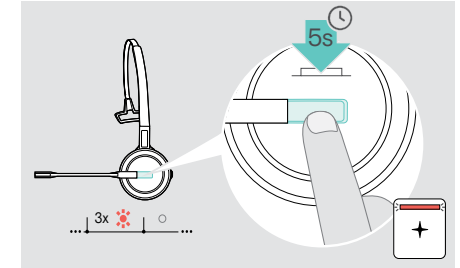
You can switch off the headset system or the headset when not using the products for extended periods of time (e.g. when you are on holiday).

#### Switching the headset system off



▶ Disconnect the base station from the mains power supply and the computer. The base station and headset switch off immediately, all LEDs switch off.

#### Switching the headset off



▶ Press and hold the hook button for 5 seconds to switch off the headset. The Headset LED flashes red 3 times. The Headset battery status LEDs on the base station switch off. The + LED lights up red.

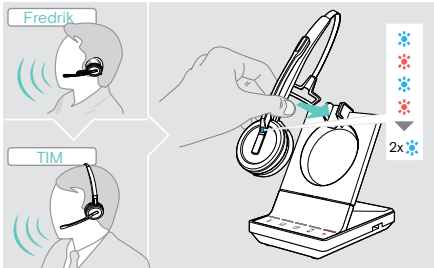
To switch the headset on again:

▶ Press the hook button.

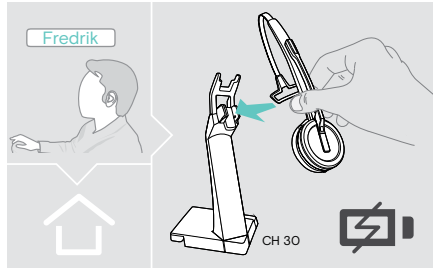


## Sharing a workplace

The SDW 5000 headsets and base stations are compatible with each other. If you share a workplace, you can use one base station with different headsets.

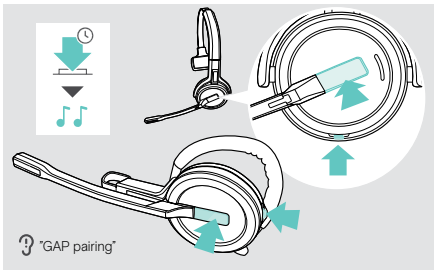


- Place the headset to be used into the magnetic holder of the base station. The Headset LED alternately flashes blue/red and flashes blue twice if pairing is successful. The headset is ready for use.



- Charge the headsets that are not in use with the optional headset charger CH 30 (see page 47).

## Using the headset with a third party base station (DECT-GAP telephone)



- Place the headset at a maximum distance of 1 m from the third party base station.
- Press and hold the headset's hook button and mute button simultaneously until you hear 2 beeps, then release the button. The voice prompt "GAP pairing" is announced in the headset. The headset switches to a special pairing mode and the Headset LED flashes blue/red alternately.
- Set the third party base station to a special pairing mode (see the instruction manual of the third party base station). The default code for the headset is "0000". The headset pairs with the third party base station. If pairing is successful, the Headset LED switches off.

If pairing is not successful within 60 seconds, the headset switches back to standby mode.

To pair the headset to a SDW 5000 series base station, after having paired it to a GAP enabled device:

- Place the headset into the magnetic holder of the base station.

Questions?  
Click to Live Chat

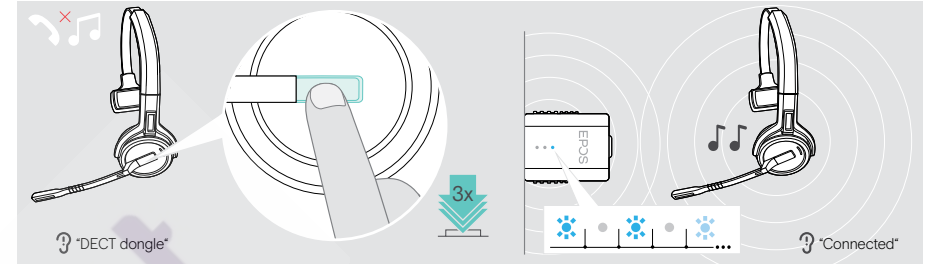
## Switching between DECT dongle and base station

Your headset can be connected to either a DECT dongle or an IMPACT SDW 5000 base station.

You can switch between these two devices when your headset is in idle mode – no active call or media reproduction.

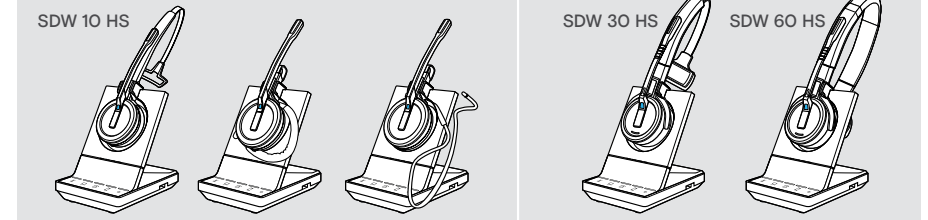
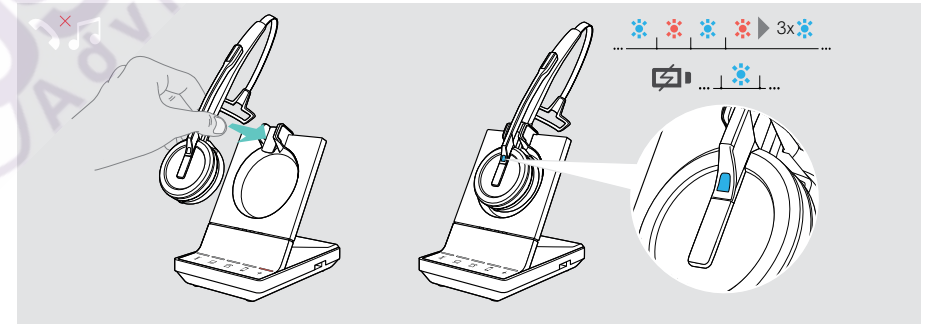
### Switching from the base station to the dongle

The headset needs to be paired to the dongle (see SDW D1 USB User Guide).



- Press the hook button 3 times. The voice prompt "DECT dongle" is announced in the headset. If the voice prompts are disabled, you hear a beep instead. If the connection is successful, the dongle LED lights up dimmed blue. The voice prompt "Connected" is announced in the headset. If the voice prompts are disabled, you hear 2 beeps instead.

### Switching from the dongle to the base station



- Place the headset into the magnetic holder of the base station. The headset is paired to the base station, the LED flashes blue and red. The LED turns blue when pairing is complete and the headset will start charging.

## Cleaning and maintaining the headset system

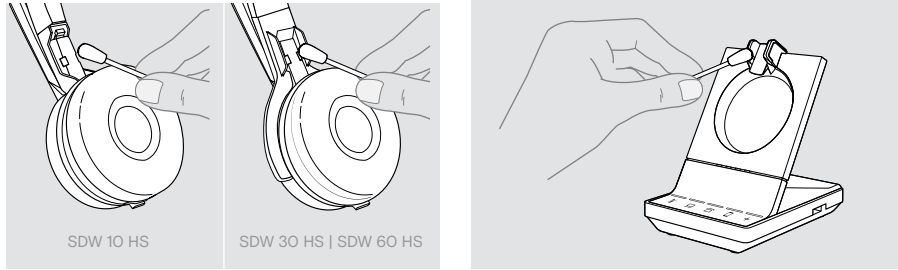
### CAUTION

#### Liquids can damage the electronics of the product!

Liquids entering the housing of the device can cause a short circuit and damage the electronics.

- ▷ Keep all liquids far away from the product.
- ▷ Do not use any cleansing agents or solvents.

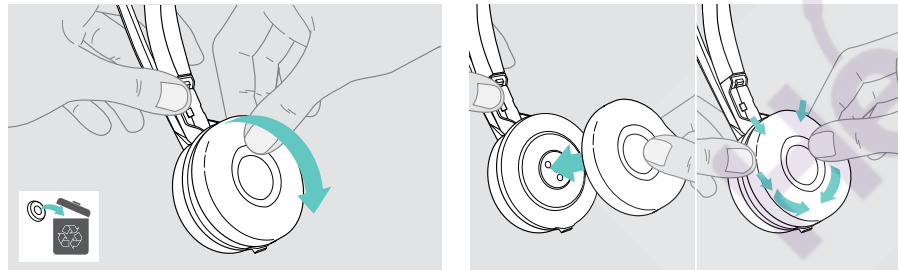
- ▷ Before cleaning, disconnect the base station from the mains power supply.
- ▷ Only use a dry and soft cloth to clean the product.



- ▷ Clean the charging contacts of the base station and the headset from time to time using e.g. a cotton swab.

### Replacing the ear pads

For hygienic reasons, you should replace the ear pads from time to time. Spare ear pads are available from your EPOS partner.



- ▷ Carefully remove the old ear pad from the ear cup.
- ▷ Attach the new ear pad to the ear cup by pressing firmly around the ear pad.

Questions?  
Click to Live Chat

## Replacing/removing the headset's rechargeable battery

### CAUTION

#### Danger of damage to the product!

During the warranty period, the rechargeable battery must only be replaced by an authorized EPOS service center, otherwise the warranty will be null and void.

- ▷ Contact your EPOS service center if the rechargeable battery needs to be replaced. To find a EPOS service partner in your country, visit [www.eposaudio.com](http://www.eposaudio.com).

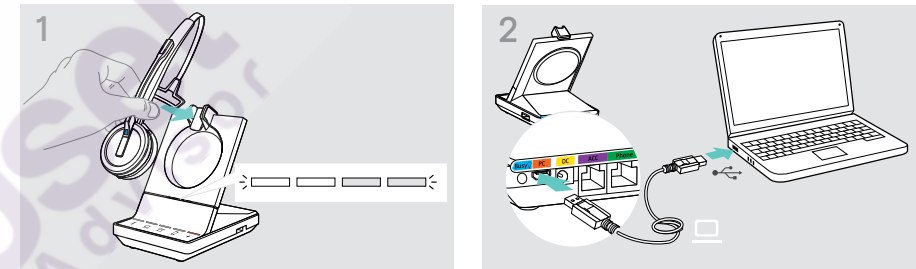
Outside the warranty period, the rechargeable battery may be replaced or removed by any qualified service center or qualified technician of your IT or Service department. Instructions for qualified technicians on how to replace or remove the battery are available from the EPOS service partner.

### Updating the firmware of the products

You can update the firmware of your headset system and Bluetooth dongle by using the free [EPOS Connect](#) software.

- ▷ Connect the base station to your computer and install the required software (see page 13).

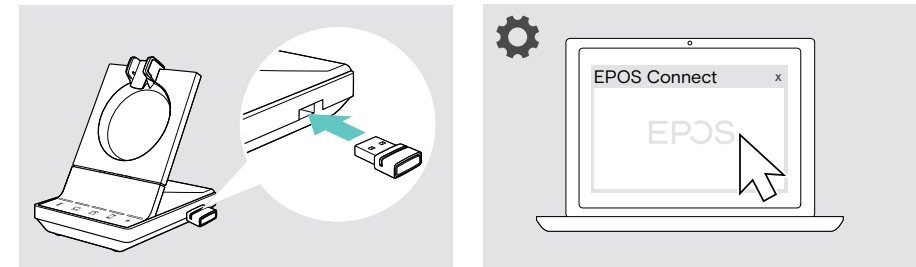
#### Updating the firmware of the base station and the headset



- ▷ Place the headset into the magnetic holder of the base station.
- ▷ Start [EPOS Connect](#).  
[EPOS Connect](#) checks if the installed firmware is the latest version available on the EPOS server. If required, upgrade to the latest version. The headset is automatically updated via the base station.
- ▷ Connect the base station via the USB cable with a USB port of your computer.



#### Updating the firmware of the Bluetooth dongle BTD 800 USB



- ▷ Insert the BTD 800 USB into the USB port on the base station. Some older dongle versions need to be connected directly to the computer in order to be updated. "New" dongles can be identified by the two grey lines on the bottom side of the housing.
- ▷ Start [EPOS Connect](#).  
[EPOS Connect](#) checks if the installed firmware is the latest version available on the EPOS server. If required, upgrade to the latest version.

## If a problem occurs ...

Problem	Possible cause	Solution	Page
The headset is placed into the base station but the charge status LED is off	Base station is not connected to the mains power supply	▷ Connect the base station to the mains power supply.	10
	Rechargeable battery is deeply discharged	▷ Wait several minutes until the Charge status LED lights up.	46
	Firmware version of the base station is older than the firmware version of the headset	▷ Update the firmware of the base station.	51
Link between headset and base station cannot be established	Headset is not paired with the base station, the + LED lights up red	▷ Place the headset into the base station.	46
Bad connection between headset and base station	Transmission range is exceeded	▷ Reduce the distance between headset and base station.	33
		▷ Adjust the radio range.	27
Noise interference and connection loss	Microphone rubs on the cheek or perhaps the beard	▷ Adjust the headset so that the microphone is about 0.8 - 1.2" (2 - 3 cm) from the corner of your mouth.	18
	Too many DECT systems within the radio range	▷ Reduce the radio range.	27
	Distance between base station and fixed line phone is so small that interference occurs	▷ Increase the distance between base station and fixed line phone.	-
Headset battery cannot be charged	Charging contacts of the headset or the base station are dirty	▷ Clean the charging contacts on the headset and on the base station.	50
	Rechargeable battery is defective/ worn out	▷ Ask a technician to replace the rechargeable battery.	51
	Headset is not properly placed in the base station	▷ Check if the headset is properly placed into the magnetic holder.	46
The sound from the fixed line phone is distorted and disturbed	Base station is not adjusted to the fixed line phone.	▷ Use the ABC switch to adjust the base station to your fixed line phone.	30
Beeps instead of voice prompts	The voice prompts are deactivated	▷ Activate the voice prompts.	32

Questions?  
Click to Live Chat

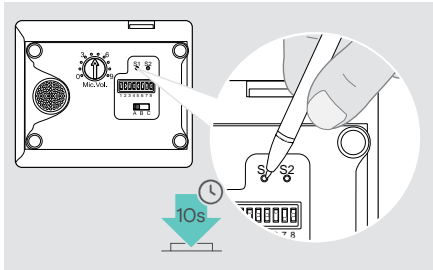
Problem	Possible cause	Solution	Page
The talk time is reduced	Worn-out rechargeable battery	▷ Ask a technician to replace the rechargeable battery.	51
	Large distance between base station and headset	▷ Reduce the distance if possible. Larger distances require a higher transmission power and reduce the talk time.	-
	Open Audio Link activated	▷ Deactivate Open Audio Link to save battery power.	27
	Many DECT systems in the same area	▷ Switch off DECT systems that are currently not required. Congestion requires a higher transmission power and reduces the talk time.  How many DECT systems can be used in the same room? This depends on various conditions: <ul style="list-style-type: none"> <li>Americas: up to 40 SDW systems in narrowband mode or in high density wideband mode (available in EPOS Connect)</li> <li>Rest of World: up to 80 SDW systems in narrowband mode or in high density wideband mode (available in EPOS Connect)</li> </ul>	-
Dropped calls due to high density	High density: Too many DECT systems in the same area	▷ Set the base station to narrowband transmission as it requires less power than wideband transmission.	28
		▷ Reduce the radio range on all DECT systems in the area.	27
		▷ Reduce audio quality to narrowband or wideband.	28
Bad audio quality: you sound too low/ distorted/ echoing to the other party/ background noise	Microphone is too far away from your mouth	▷ Ensure "Open Audio Link" is not selected on DIP switch 4.	27
		▷ Adjust the microphone sensitivity.	30
DIP switch settings do not work	Microphone sensitivity is not correctly adjusted	▷ Adjust the microphone position.	18
	Base station settings were updated and overwritten via EPOS Connect	▷ Reset the system	54
Headset/ base station does not react to any button press	No system re-boot after DIP switches were changed	▷ Disconnect the base station shortly from power.	26
	The operation of the headset or base station is faulty	▷ Reset the products to the factory default settings.	54
Battery status LED's on the base station are flashing and the multi-function button is lit up red	Firmware version of the headset is older than the firmware version of the base station	▷ Update the firmware of the headset.	51
No Bluetooth connection via dongle BT-D 800 USB	Dongle not inserted correctly in the base station	▷ Plug in the dongle again.	14
	Dongle and mobile device not connected	▷ Pair the dongle and your mobile device (Pairing).	15
		▷ Activate Bluetooth on your mobile device.	-
Dongle and Bluetooth headset not connected	▷ Pair the dongle and your headset (Pairing).	16	

Problem	Possible cause	Solution	Page
Dongle BT-D 800 USB does not accept new devices (Pairing)	Dongle's pairing list disturbed	▷ Clear the list of previously paired devices.	16
Guest headset is not accepted	Guest headset not accepted on Master headset	▷ Repeat the procedure and accept the guest headset on the master.	42
	Guest headset accepted too late on Master headset		
Busylight does not light up	Too many Guest headsets in use	▷ Leave the conference with one of the other headsets by pressing the hook button on this headset.	-
	USB port is deactivated: the busylight socket is linked to the USB port	▷ Activate the USB port via EPOS Connect.	

If a problem occurs that is not listed in the above table or if the problem cannot be solved with the proposed solutions, please contact your local EPOS partner for assistance.

To find a EPOS partner in your country, search at [www.eposaudio.com](http://www.eposaudio.com).

**Restoring factory default settings (Reset)**



- ▷ Make sure that the base station is powered via USB cable or power supply unit.
- ▷ Use a pointed object to press the Set button S1 for approx. 10 seconds. The base station factory default settings are restored.

**Specifications**

**Headset SDW 10 HS**

Dimensions (W x H x D)  
Weight with...

Talk time

Standby time  
Charging time

Range (environment dependent)

Frequency response speaker  
Rechargeable battery (built-in)  
Output power

Speaker type  
Microphone type

**Headset SDW 30 HS | Headset SDW 60 HS**

Dimensions (W x H x D)  
Weight

Talk time

Listening time  
Standby time  
Charging time

Range (environment dependent)

Frequency response speaker  
Rechargeable battery (built-in)  
Output power

Speaker type  
Microphone type

**Questions?  
Click to Live Chat**

Dimensions (W x H x D)	50 x 25 x 140 mm / 1.97 x 0.98 x 5.51 in
ear hook:	44 g / 1.55 oz / 0.097 lbs
headband:	58 g / 2.05 oz / 0.13 lbs
neckband:	43 g / 1.52 oz / 0.095 lbs
narrowband:	up to 10 hours
wideband:	up to 8 hours
super wideband:	up to 6 hours
Standby time	48 hours
Charging time	50%: approx. 30 minutes 100%: approx. 1 hour
free line of sight:	up to 180 m / 590 ft
in office buildings:	up to 55 m / 180 ft
Frequency response speaker	20 Hz - 16 kHz (depends on settings)
Rechargeable battery (built-in)	Lithium Polymer; 3.7 V; 335 mAh
Output power	<b>European Union/Japan:</b> max. 250 mW (EIRP) <b>United States:</b> max. 100 mW (EIRP)
Speaker type	neodymium magnet
Microphone type	Digital MEMs microphone (2 microphones), noise cancelling

SDW 30 HS:	165 x 165 x 62 mm / 6.50 x 6.50 x 2.44 in
SDW 60 HS:	165 x 170 x 62 mm / 6.50 x 6.69 x 2.44 in
SDW 30 HS:	98 g / 3.46 oz / 0.22 lbs
SDW 60 HS:	136 g / 4.80 oz / 0.30 lbs
narrowband:	up to 14 hours
wideband:	up to 11 hours
super wideband:	up to 9 hours
wideband:	up to 12 hours
fullband:	up to 9 hours
Standby time	44 hours
Charging time	50%: approx. 30 minutes 100%: approx. 1 hour 30 minutes
free line of sight:	up to 180 m / 590 ft
in office buildings:	up to 55 m / 180 ft
Frequency response speaker	20 Hz - 20 kHz (depends on settings)
Rechargeable battery (built-in)	Lithium Polymer; 3.7 V; 530 mAh
Output power	<b>European Union/Japan:</b> max. 250 mW (EIRP) <b>United States:</b> max. 100 mW (EIRP)
Speaker type	neodymium magnet
Microphone type	Digital MEMs microphone (2 microphones), noise cancelling

**Base station**

Dimensions (W x H x D)

Weight

Connectors

DECT frequency range

RF output power

**Power supply unit**

Nominal input voltage

Nominal input current

Mains frequency

Nominal output voltage

Nominal output current

Weight

**Bluetooth dongle BTD 800 USB**

Dimensions (W x H x D)

Weight

Bluetooth

Range

Transmission frequency

Profiles

Output power

Typical sensitivity

**Base station | Headset | BTD 800 USB | Power supply unit**

Temperature range

Relative humidity

**Trademarks**

The Bluetooth® word mark and logos are registered trademarks owned by Bluetooth SIG, Inc. and any use of such marks by DSEA A/S is under license.

**SDW BS 3**

87 x 122 x 105 mm / 3.43 x 4.80 x 4.13 in

320 g / 11.29 oz / 0.71 lbs

- Power supply socket **DC**
- Micro-USB socket **PC**
- USB socket
- Busylight socket **Busy**

**SDW BS 5**

87 x 122 x 105 mm / 3.43 x 4.80 x 4.13 in

320 g / 11.29 oz / 0.71 lbs

- Power supply socket **DC**
- Micro-USB socket **PC**
- USB socket
- Busylight socket **Busy**
- Accessory socket **ACC**
- Fixed line phone socket **Phone**
- Handset socket **Handset**

**European Union:** 1880 – 1900 MHz**United States:** 1920 – 1930 MHz**Japan:** 1893 – 1906 MHz**Brazil:** 1910 – 1920 MHz**European Union/Japan:** max. 250 mW (EIRP)**United States:** max. 100 mW (EIRP)

100 – 240 V-

max. 0.3 A

50 – 60 Hz

5.0 V ---

2 A

approx. 100 g / 3.53 oz / 0.22 lbs

22 x 16 x 6 mm / 0.87 x 0.63 x 0.24 in

2 g / 0.07 oz / 0.004 lbs

version 4.2/ power class 1

up to 25 m (device-dependent)

2402 – 2480 MHz

- **HSP** Headset Profile (version 1.2)
- **HFP** Handsfree Profile (version 1.7)
- **A2DP** Advanced Audio Distribution Profile (version 1.3)
- **AVRCP** Audio Video Remote Control Profile (version 1.6)

max. 8 dBm (EIRP)

-89 dBm

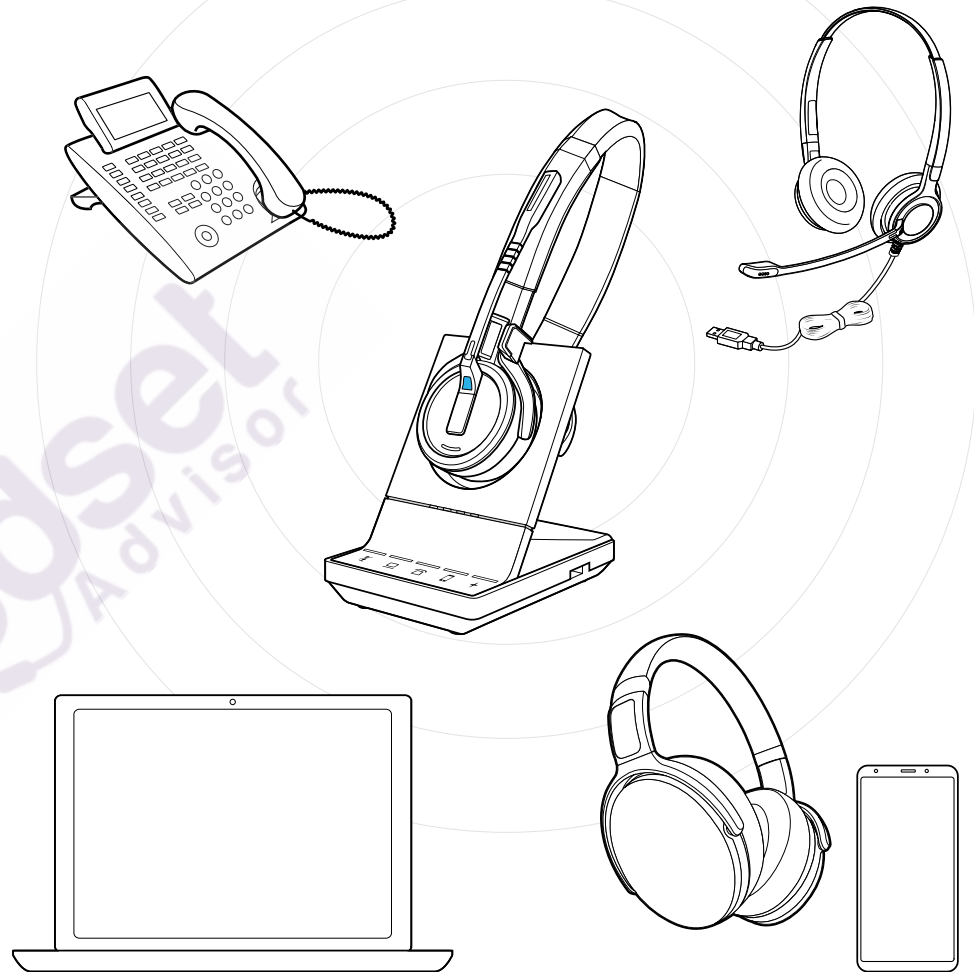
operation: +5 °C to +45 °C / +41 °F to +113 °F

storage: -20 °C to +70 °C / -4 °F to +158 °F

operation: 20% to 85%

storage: 20% to 95%

**Questions?**  
**Click to Live Chat**

**EPOS | SENNHEISER****DSEA A/S**

Kongebakken 9, DK-2765 Smørum, Denmark  
www.eposaudio.com