

# SW-K GAMMA 'ALUMINIUM' HAND WINCHES

## SW-K GAMMA, aluminium hand winches Capacities: 200 - 800kg

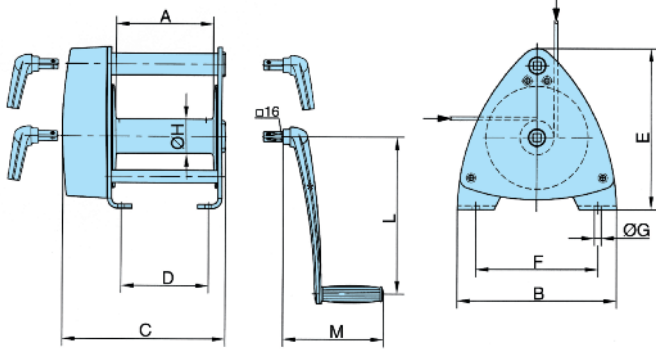
These models are the solution to many winching problems. The design features two-speed gearing on some models with very fast operation. The two speeds are available depending upon the capacity; for example on the 500kg winch the fast speed winds in 335mm for each turn of the crank with loads below 90kgs, whilst the slow speed lifts full loads with minimum effort.

### Features and benefits include:

- Aluminium construction.
- Teflon coated bearings to reduce effort with a roller chain drive.
- Automatic self-sustaining spring loaded brake acting in both directions.
- Base, wall or ceiling mounting.
- Removeable handle, operates from both ends of the winch.

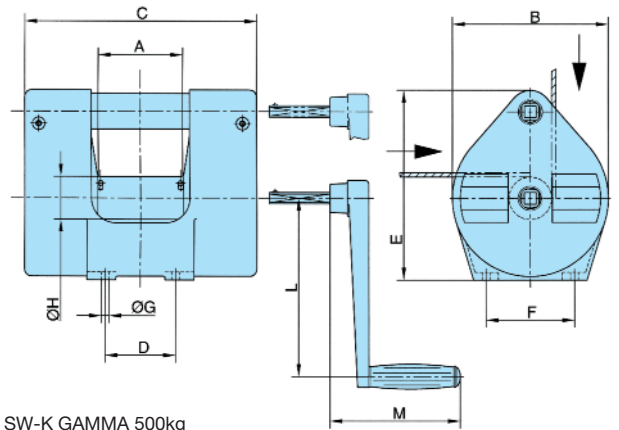


SW-K GAMMA 800kg



SW-K GAMMA 200kg / 800kg

\*Only 800kg design



SW-K GAMMA 500kg

| Article No.                          |             | SW-K GAMMA<br>N040270004 | SW-K GAMMA<br>N040270001 | SW-K GAMMA<br>N040270006 |
|--------------------------------------|-------------|--------------------------|--------------------------|--------------------------|
| Lifting cap. 1 <sup>st</sup> layer   | kg          | 200                      | 500                      | 800                      |
|                                      | upper layer | kg                       | 110                      | 200                      |
| Wire rope cap. 1 <sup>st</sup> layer | m           | 3.6                      | 4.2                      | 5.3                      |
|                                      | upper layer | m                        | 40                       | 50                       |
| Drive group DIN 15020/1              |             | 1 Em                     | 1 Em                     | 1 Em                     |
| Wire rope Ø*                         | mm          | 4                        | 6                        | 7                        |
| Lift per crank rotation              | mm          | 195                      | 60/400**                 | 36/280**                 |
| Required crank pressure              | daN         | 19                       | 12                       | 18                       |
| Ratio of transmission                |             | -                        | 6.57:1                   | 7.57:1                   |
| Weight                               | kg          | 6                        | 14                       | 16                       |
| A                                    | mm          | 120                      | 120                      | 200                      |
| B                                    | mm          | 160                      | 220                      | 326                      |
| C                                    | mm          | 192                      | 330                      | 336                      |
| D                                    | mm          | 152                      | 100                      | 180                      |
| E                                    | mm          | 165                      | 267                      | 327                      |
| F                                    | mm          | 135                      | 125                      | 250                      |
| G Ø                                  | mm          | 9,5                      | 11                       | 14                       |
| H Ø                                  | mm          | 50                       | 60                       | 70                       |
| L                                    | mm          | 320                      | 250                      | 320                      |
| M                                    | mm          | 207                      | 165                      | 207                      |



SW-K GAMMA - 200kg



SW-K GAMMA - 500kg

\*Recommended wire rope DIN 3060 FE-znK-1770 sZ spa. \*\*Low/high-speed.  
• All Pfaff winches are supplied WITHOUT wire rope.