

SCH-W, sluice gate jack systems with rack and pinion drive Capacities 1500 - 10000kg

Sluice gate systems are used primarily in water power, agriculture and plant engineering. Different crank types and layouts present hundreds of possible arrangements.

Features and benefits include:

- Spring loaded safety crank provides pressure when required.
- 10000kg model supplied with a SIKU crank, others supplied with a SIFEKU crank.
- Slide lacquer treated racks.
- Spur gear with formed gearwheels.
- Precisely milled crank gear.

Options:

- Extended rack lengths.
- Galvanised finish.

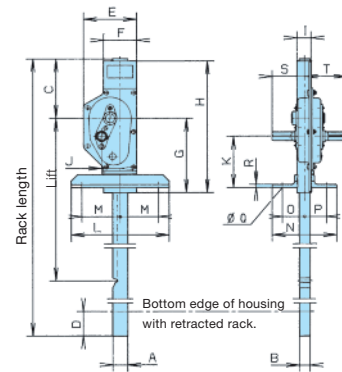


3000kg

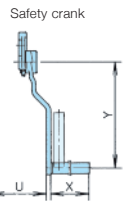


Article no.		40051714	40051717	30031135	30032018
Crank type		Sifeku	Sifeku	Sifeku	Siku
Lifting capacity	kg	1500	3000	5000	10000
Pressure force*	kg	300	600	3000	6000
Rack length	mm	1200	1250	1350	1550
Lift	mm	800	800	900	1000
Weight	kg	18	25	32	56
A	mm	35	45	50	60
B	mm	25	30	40	50
C	mm	140	160	145	165
D	mm	85	60	45	65
E	mm	125	204	189	235
F	mm	78	92	100	112
G	mm	175	230	260	320
H	mm	310	395	400	480
I	mm	33.5	39.5	51	59
J	mm	43.3	53.1	69.5	88.3
K	mm	121	138	81	84
L	mm	230	230	230	290
M	mm	90	90	90	115
N	mm	153	158	173	183
O	mm	52.5	55	61	66
P	mm	52.5	55	64	70
QØ	mm	14	14	14	14
R	mm	7	7	7	8
S	mm	76.5	85.5	88	100
T	mm	100.5	108.5	120	140
U	mm	113	121	132	185
V	mm	86	94	105	-
W	mm	136	144	155	-
X	mm	130	130	130	250
Y	mm	250	250	250	300

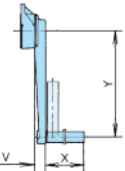
1500 - 3000kg



Crank design

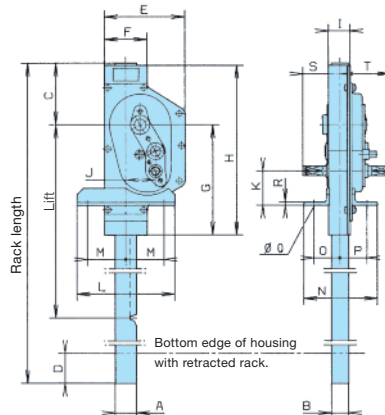


Spring loaded safety crank.



Spring loaded safety lock and plug-in crank.

5000 - 10000kg



*Load case II according to Euler – the pressure force will be reduced with higher lift.