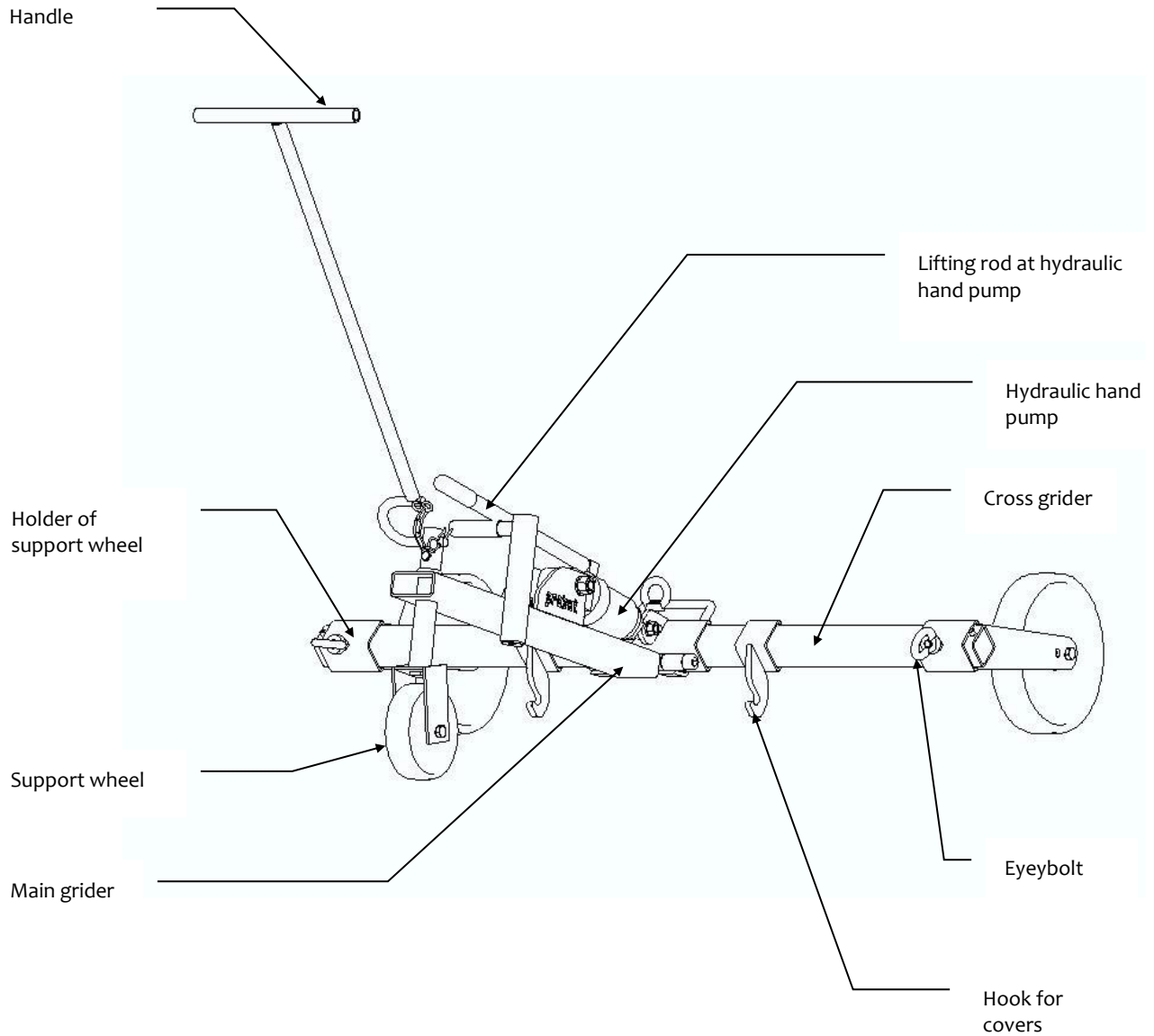


3.2 Survey and construction

SDH-H

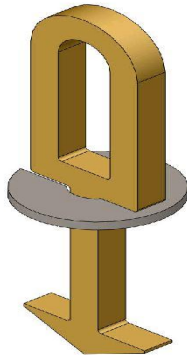


3.3 Technical Data

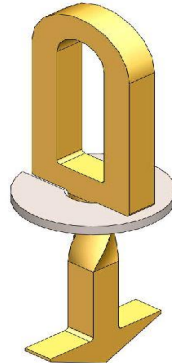
Type	Max. wheel span	Hook centres min./max.	Lifting height	Pulling force	Dead weight
SDH-H 15-UK	1,050 mm (41")	260/950 mm (10 ¹ / ₄ /37 ¹ / ₂ ")	310 mm (12 ¹ / ₄ ")	1,500 kg (3,300 lbs)	55 (120 lbs)

3.4 Accessories

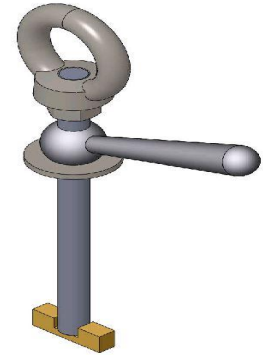
Hook A



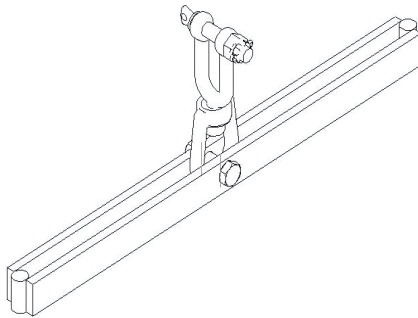
Hook B



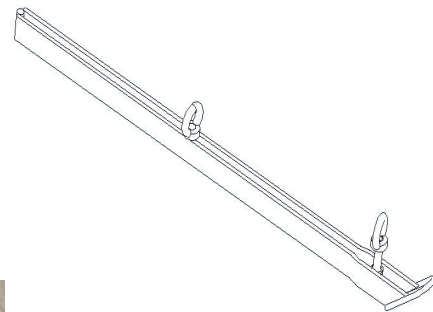
Hook C



Spreader bar „small“



Spreader bar „large“



Gatic Key



Type	Description	Order-No.
Set of keys and spreader bars	2 Hook A	44800019
	2 Hook B	44800020
	4 Hook C	44800075
	1 Spreader bar „small“	44800008
	2 Spreader bar „large“	44800018
Set of keys and spreader bars UK	2 Hook A, 2 Hook B, 2 Hook C, 1 Spreader bar „small“, 2 Spreader bar „large“	S-54800004
Aluminium Tool Box	Size 1195x305x203 mm to stow the complete device(SDH-H) including all accessories.	54800003

Accessory	<u>Gatic Key</u>	44800069
-----------	------------------	----------

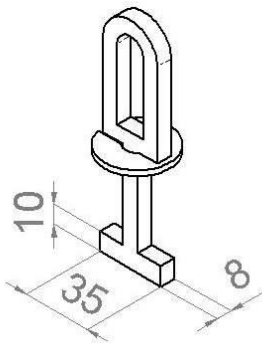
4 Operation

4.1 Attaching Variants

Depending upon form, kind and execution of the covers, the suitable hooks (A or B) , and/or spreader bars(variant I or II) must be selected.

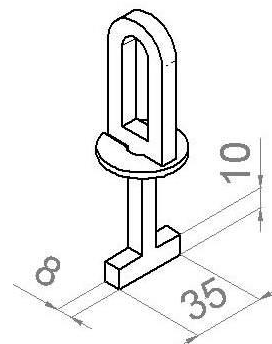
HOOK A

Hook A (2x44800019)



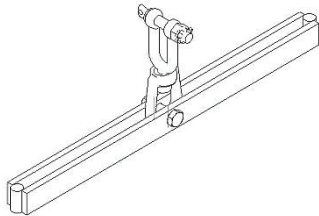
HOOK B

Hook B (2x44800020)



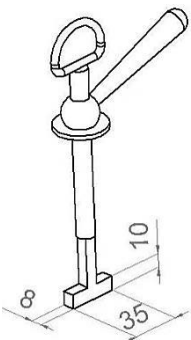
VARIANT I

Spreader bar „small“ (44800008)

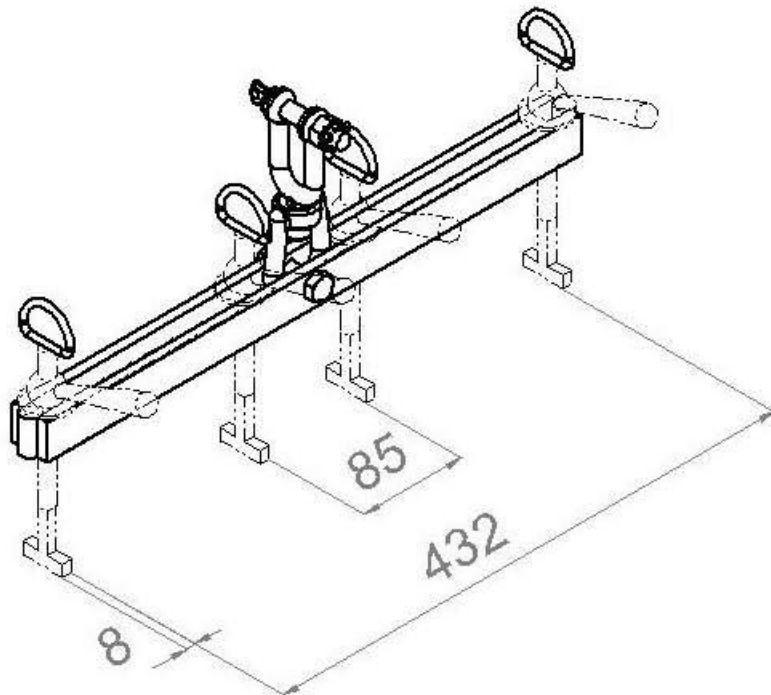


+ →

Hook C (4x44800017)

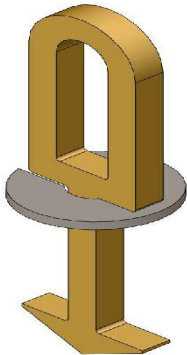


Spreader bar „small“ (44800008) + Hook C (44800017)

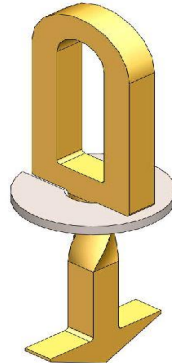


3.4 Accessories

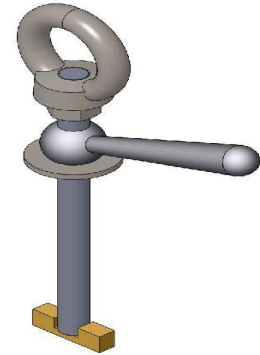
Hook A



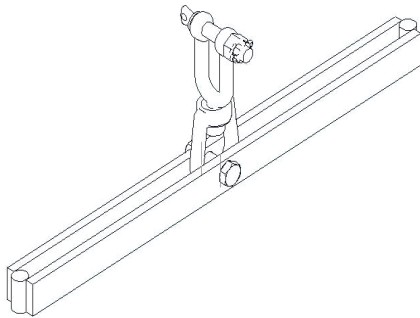
Hook B



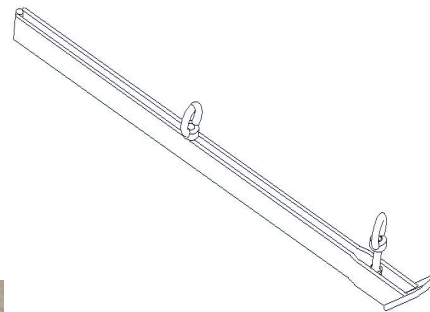
Hook C



Spreader bar „small“



Spreader bar „large“



Gatic Key

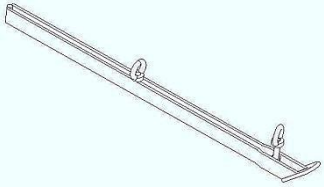


Type	Description	Order-No.
Set of keys and spreader bars	2 Hook A	44800019
	2 Hook B	44800020
	4 Hook C	44800075
	1 Spreader bar „small“	44800008
	2 Spreader bar „large“	44800018
Set of keys and spreader bars UK	2 Hook A, 2 Hook B, 2 Hook C, 1 Spreader bar „small“, 2 Spreader bar „large“	S-54800004
Aluminium Tool Box	Size 1195x305x203 mm to stow the complete device(SDH-H) including all accessories.	54800003

Accessory	<u>Gatic Key</u>	44800069
-----------	------------------	----------

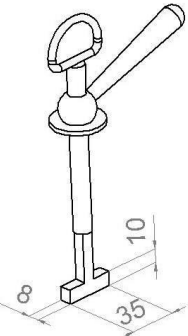
VARIANT II

Spreader bar „large“ (2x44800018)

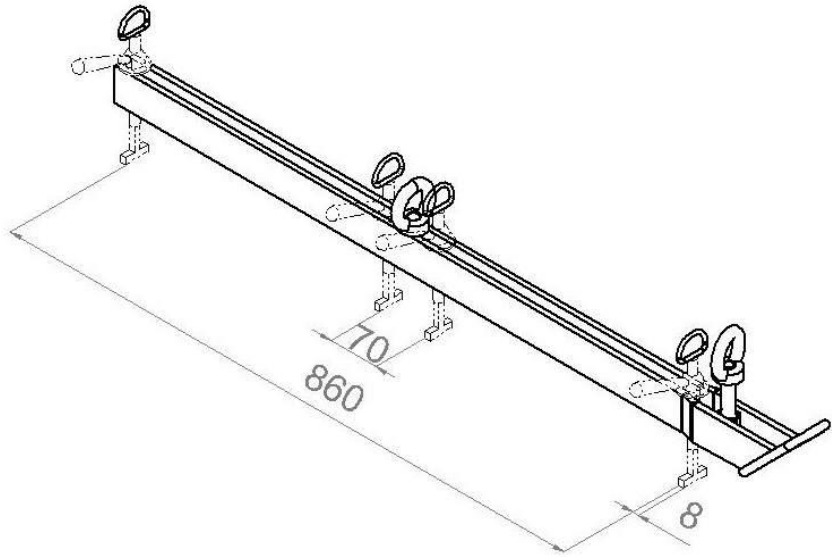


+ →

Hook C (4x44800017)

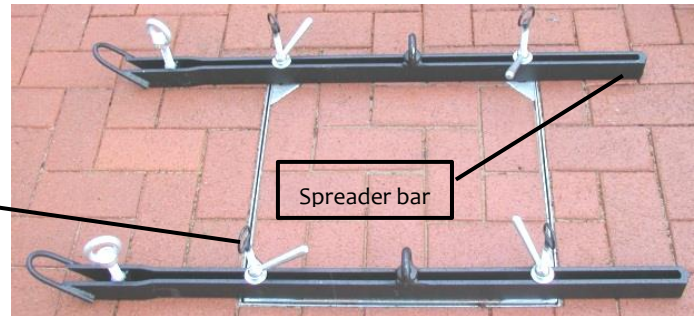
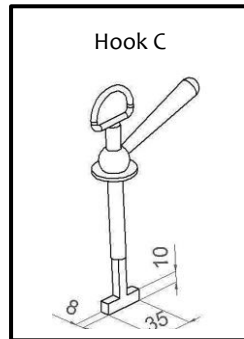


Spreader bar „large“ (44800017) + Hook C (44800017)

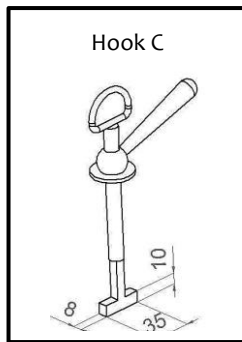


4.2 Device Operating

- Prepare spreader bars and/or hooks suitably the cover, which is to be raised.



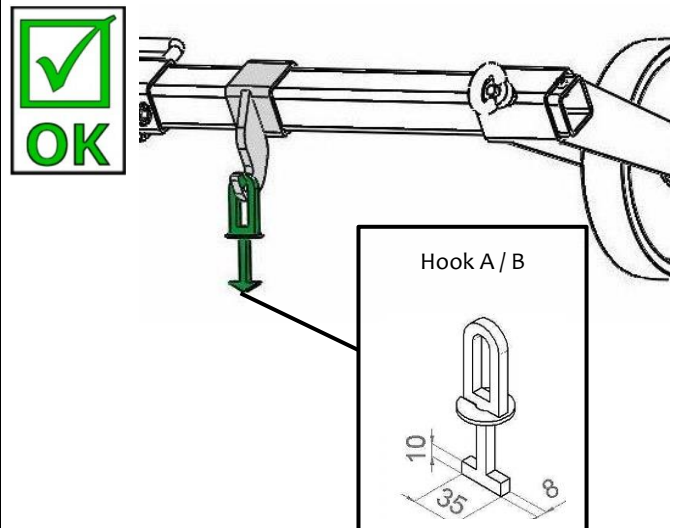
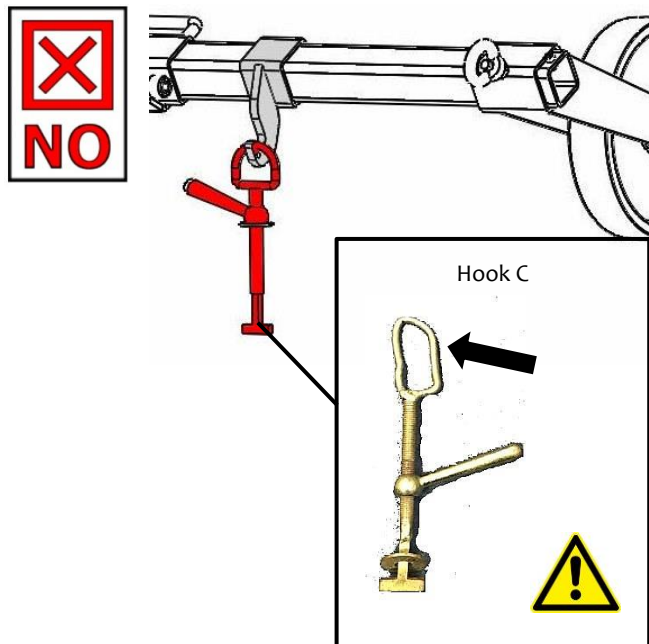
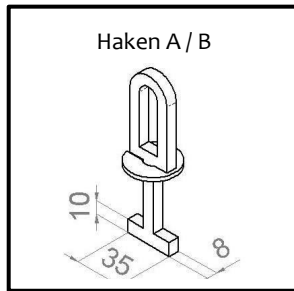
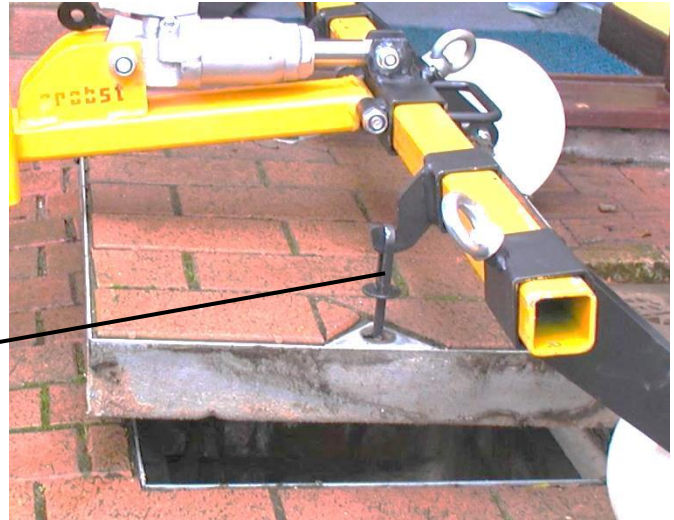
- Drive with the device (SDH-H) over the cover and hang up the hooks (A or B) into the hooks at the device (SDH-H).



- Use the lifting rod at hydraulic hand pump to pump the device highly



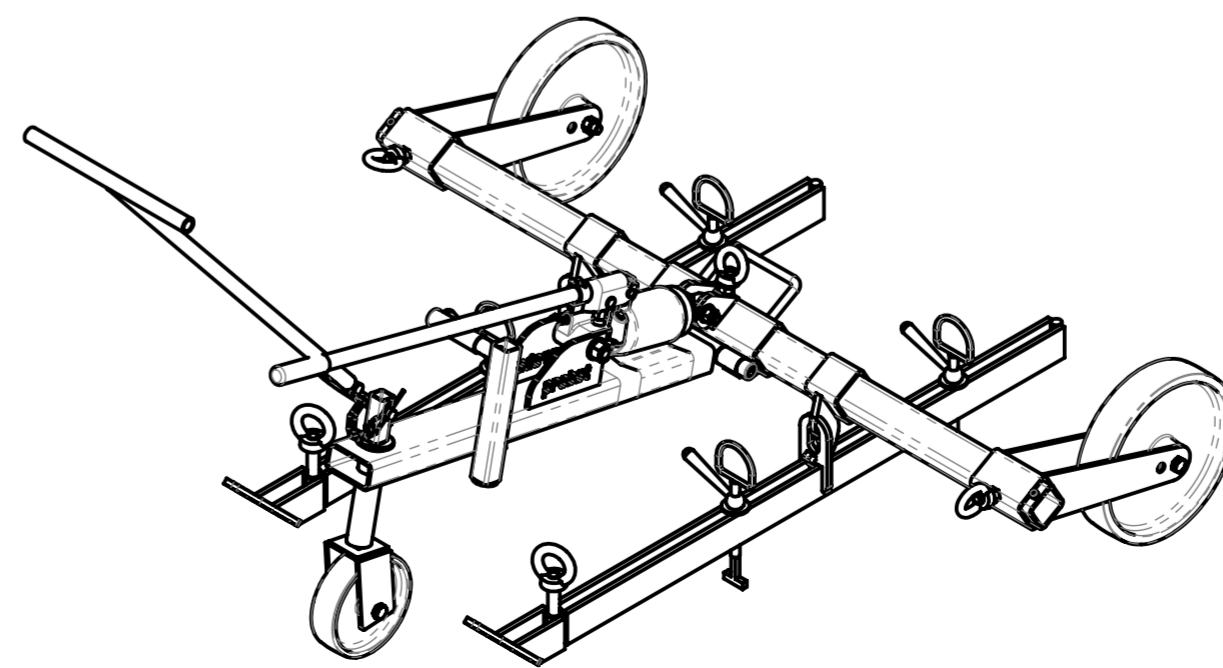
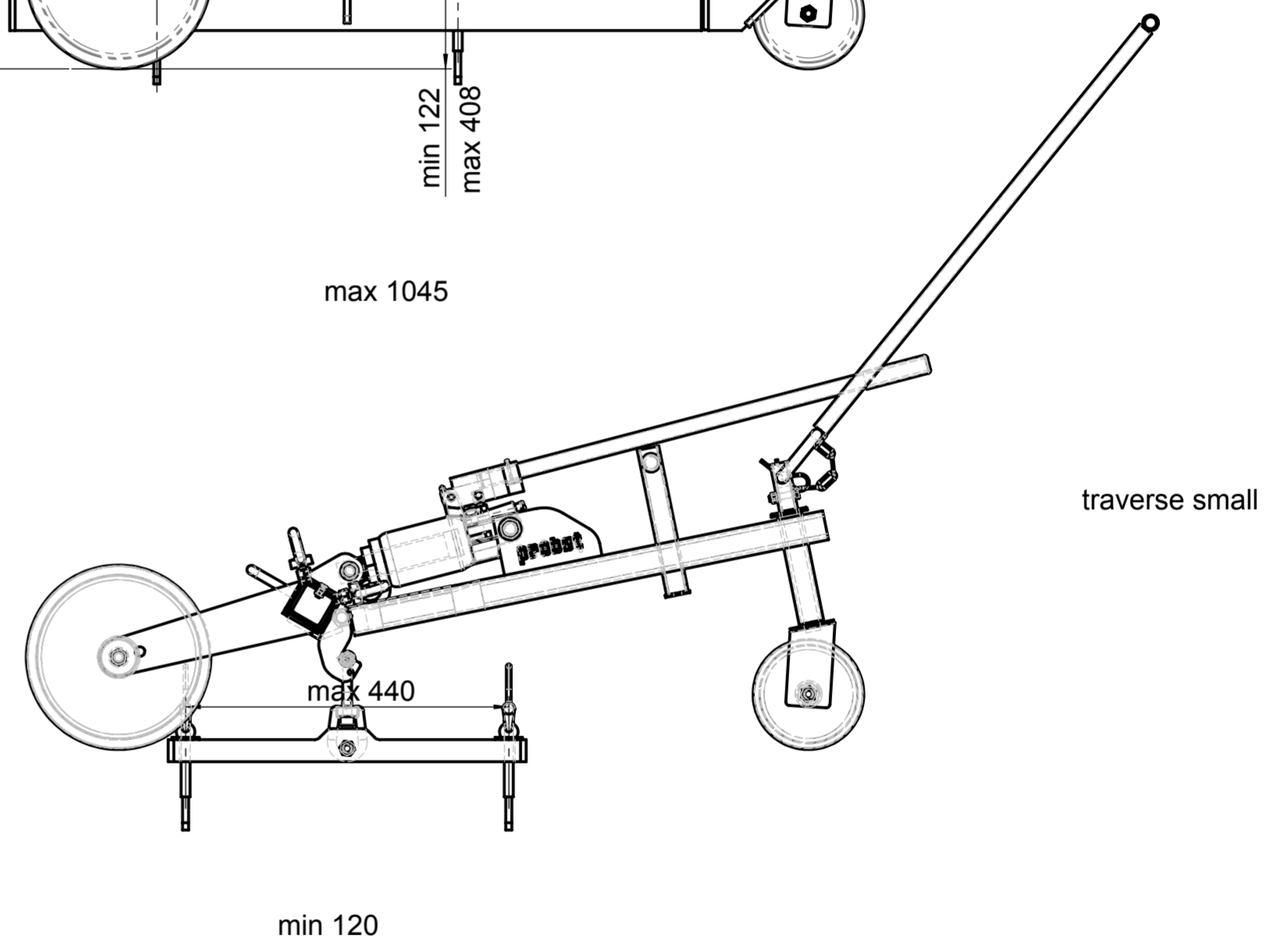
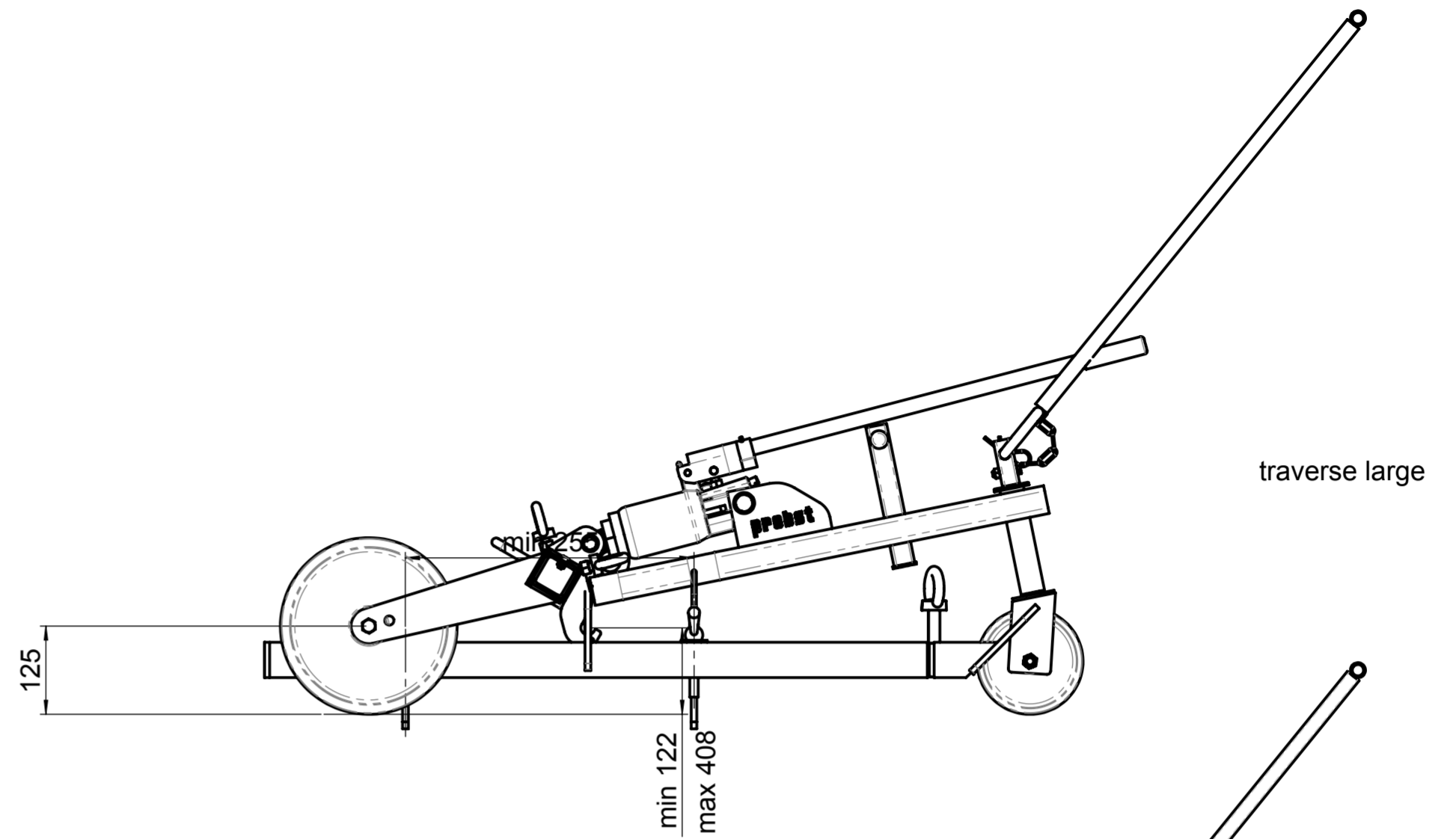
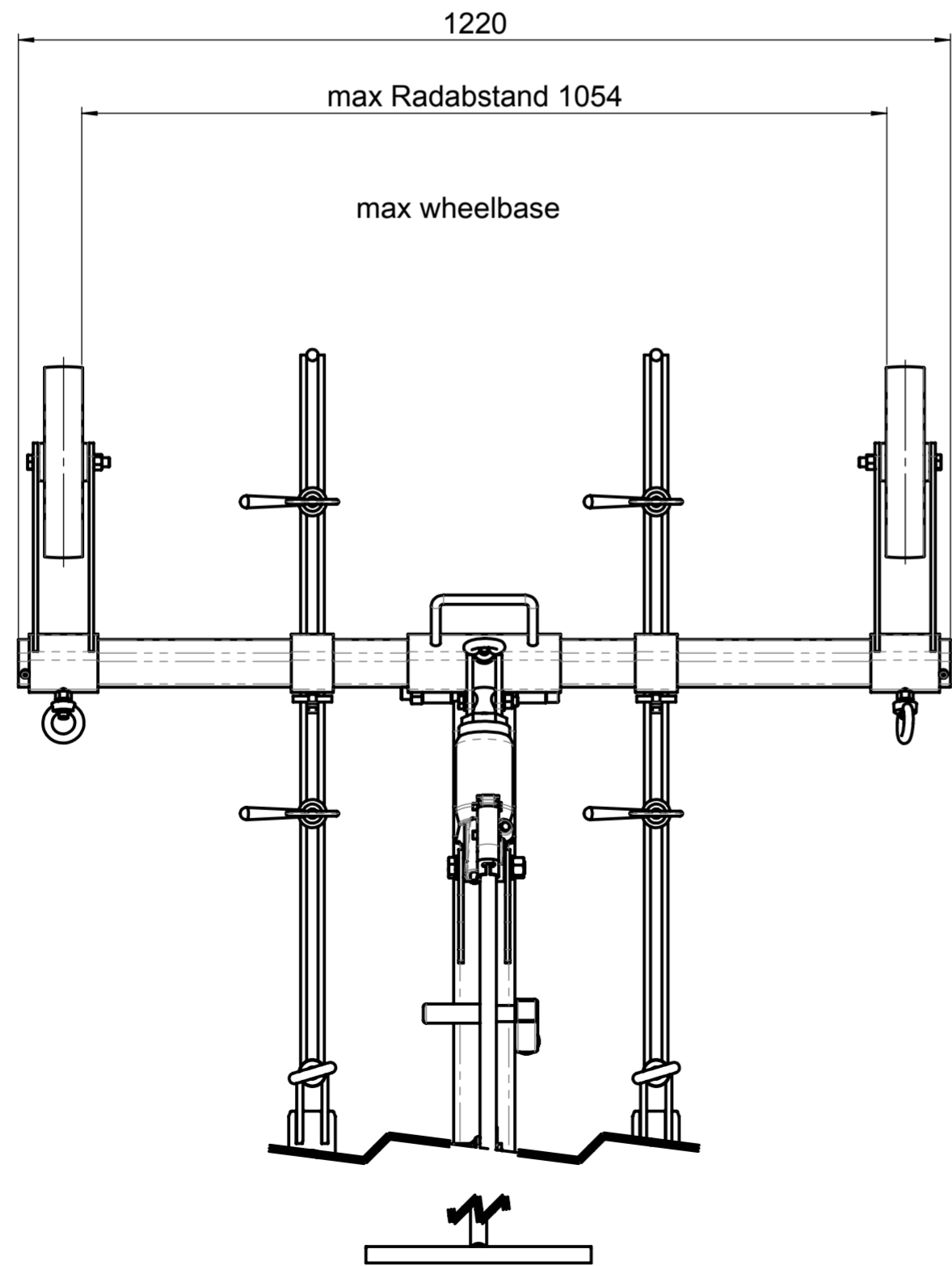
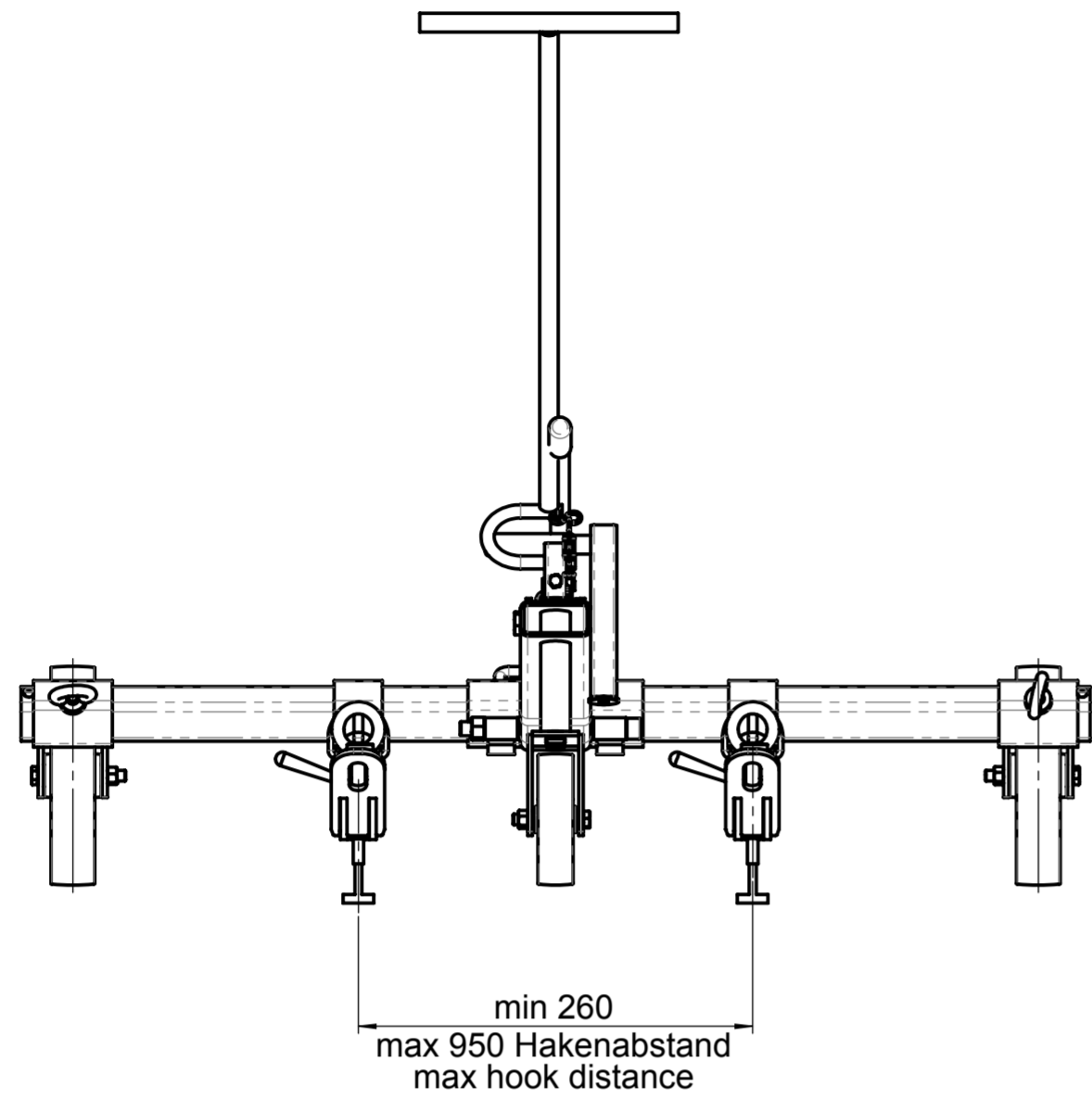
ATTENTION: Bring hands and feet out of the danger area of the device (SDH-H)!



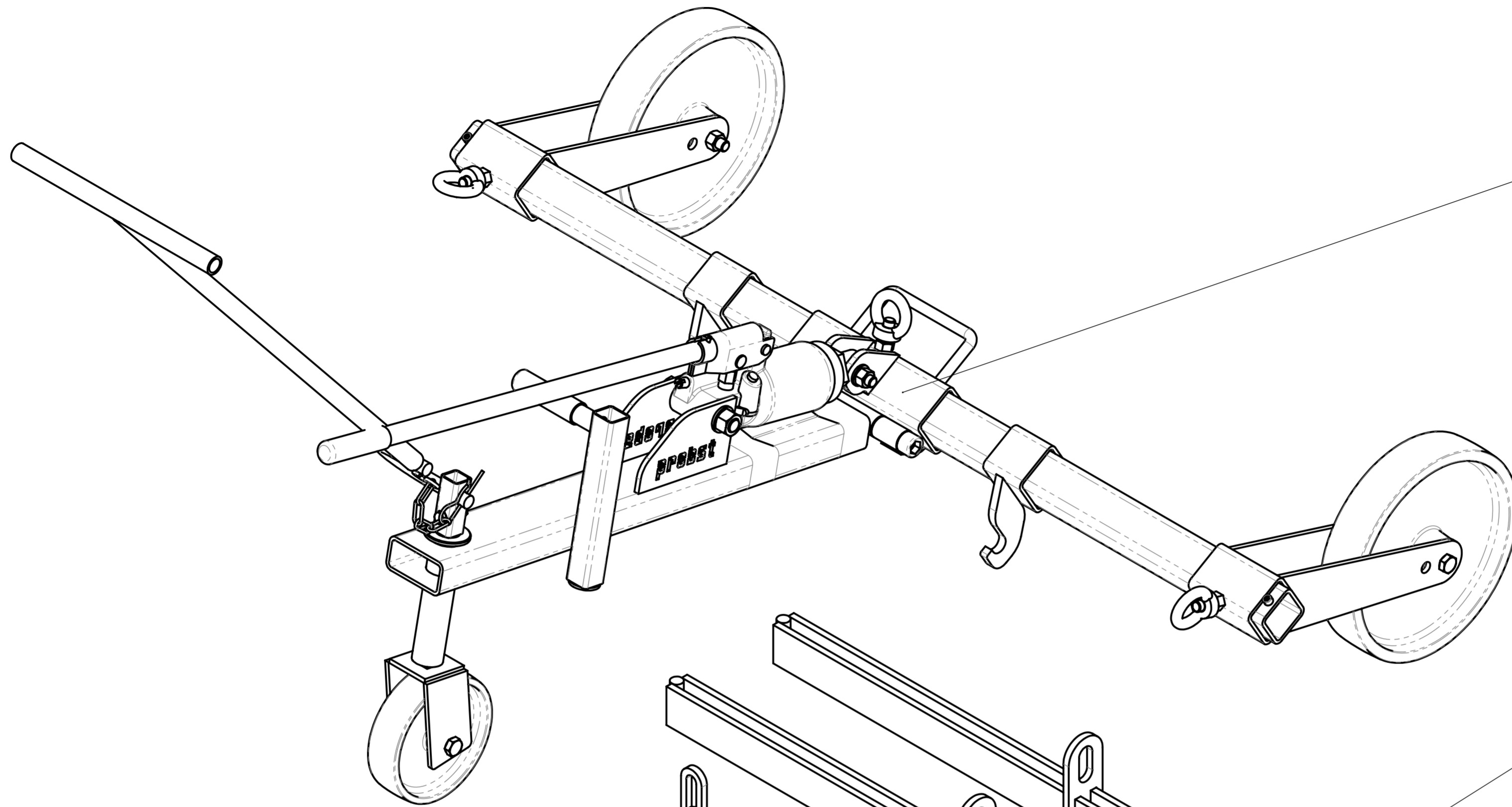
- The device (SDH-H) can now be driven with the lifted cover carefully to the place of destination.
- In order to discharge cover again, rotate by hand the lifting rod at hydraulic hand.



ATTENTION: Bring hands and feet out of the danger area of the device (SDH-H)!



Tragfähigkeit / Working Load Limit WLL:		1500 kg / 3306 lbs	
Eigengewicht / Dead Weight:		56 kg / 123 lbs	
Product Name: Hydraulic Manhole Cover Lifter SDH-H-15-UK			
probst handling equipment		© all rights reserved conform to ISO 16016	
Datum	Name	Benennung	
Erst. 3.7.2015	R.Hoffmann	Schachtdeckelheber SDH-H-15-UK	
Gepr. 3.7.2015	R.Hoffmann		
		Artikelnummer/Zeichnungsnummer	
		D54800006	
Zust.	Urspr.	Ers. f.	Ers. d.
		Blatt 1 von 1	



54800002

siehe separate Liste
see separate list

44800018

44800019

44800017

44800020

44800008



© all rights reserved conform to ISO 16016

	Datum	Name
Erst.	3.7.2015	R.Hoffmann
Gepr.	3.7.2015	R.Hoffmann

Benennung
Schachtdeckelheber SDH-H-15-UK

Zust.	Urspr.	Ers. f.	Ers. d.

Artikelnummer/Zeichnungsnummer
E54800006

Blatt
1
von 1

44800009

30080004

44800014

20000072

21800004

20100006

20100003

30080004

44800012

20000069

20400004

22600080

44800019

20000084

44800016

20400050

44800018

21600005

44800013

20000012

20400004

20100006

44800011

20400050

20100008

44800010

20020151

20100004

20400027

44800015

20100006

44800017

20000070

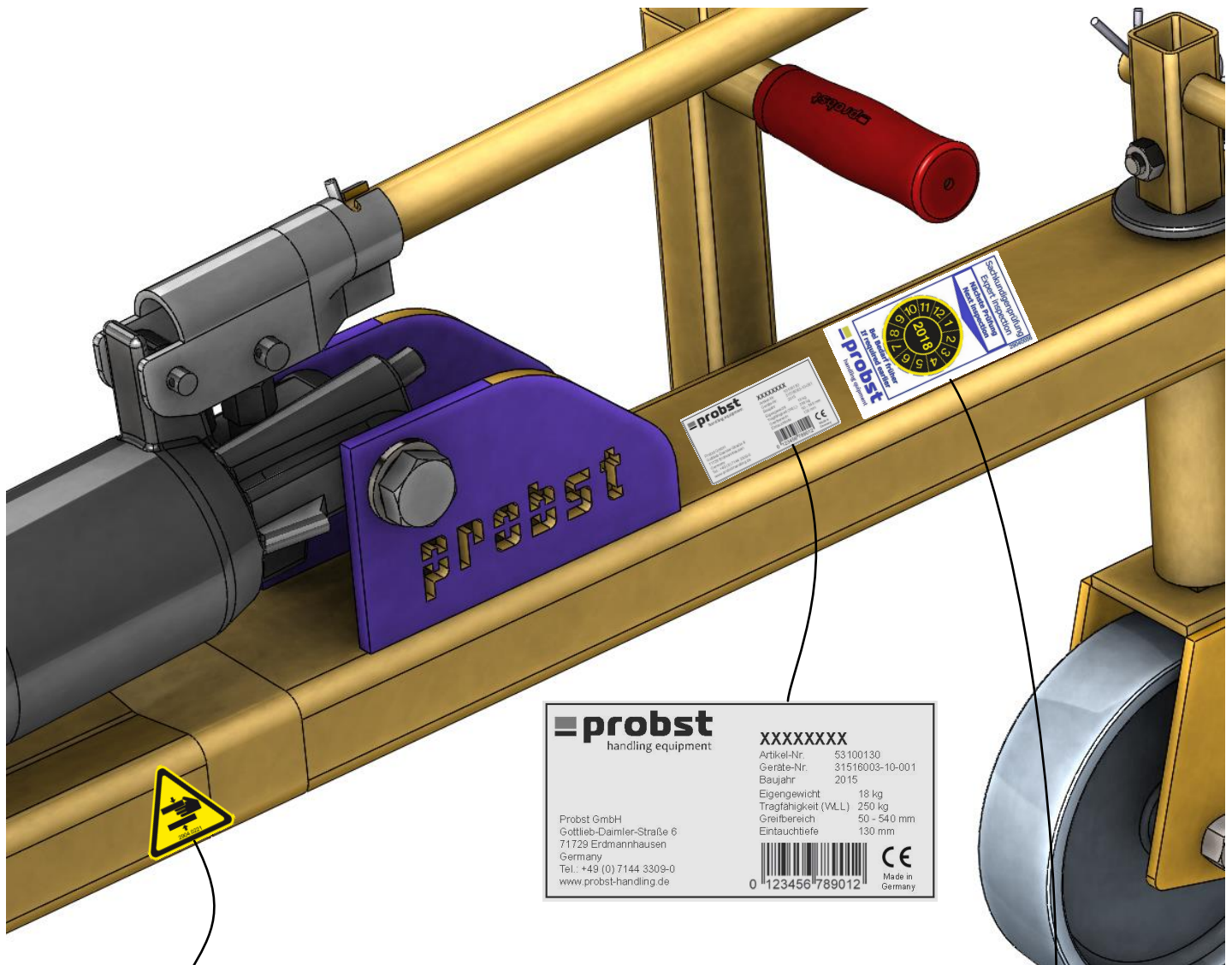
21800003

probst
the better solution

© all rights reserved conform to ISO 16016

	Datum	Name	Benennung
Erst.	9.7.2002	Kirkamm	Schachtdeckelheber SDH-H15
Gepr.			
2			Artikelnummer/Zeichnungsnummer
1			E54800002
Zust.	Urspr.	Ers. f.	Ers. d.

Blatt	1
von	1



	XXXXXXX Artikel-Nr. 53100130 Geräte-Nr. 31516003-10-001 Baujahr 2015 Eigengewicht 18 kg Tragfähigkeit (VLL) 250 kg Greifbereich 50 - 540 mm Eintauchtiefe 130 mm
	Probst GmbH Gottlieb-Damler-Straße 6 71729 Erdmannhausen Germany Tel.: +49 (0) 7144 3309-0 www.probst-handling.de

Made in Germany
 0 123456 789012



29040221
Auf beiden Seiten/
On both sides



29040665

Sachkundigenprüfung
Expert inspection

Nächste Prüfung
Next inspection

Bei Bedarf früher
If required earlier

29040056

