



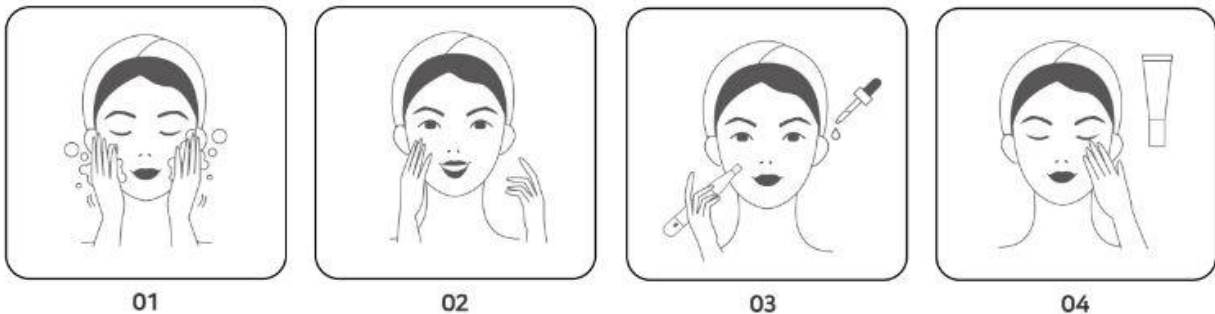
Instructions for BIOTOC 3X Ampoule with BIOTOC MEDI NANOPEN-PRO

Important! Store all BIOTOC 3X ampoules upon receipt in the refrigerator to preserve the potency of ingredients sourced from botanicals. After activating the ampoule, continue to store in the refrigerator.

High Level Steps

Use the Medi Nanopen-Pro once a week at night when you won't have much sun exposure the next day

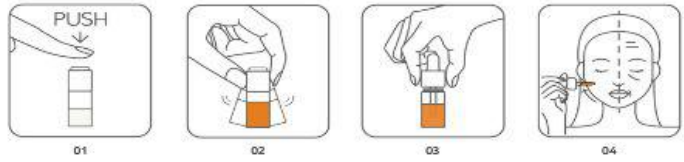
1. Activate the BIOTOC 3X ampoule by pressing down on the top of the cap and shake well. Remove the cap and replace with the dropper cap.
2. Screw a new nanochip on the Medi Nanopen-Pro.
3. On clean, exfoliated and toned skin, apply the BIOTOC 3X ampoule on your face and glide the Nanopen gently across your face.
4. Apply BIOTOC Expert Lifting Cream and also your regular moisturizer for additional hydration.
5. Continue to apply BIOTOC 3X ampoule morning and night in addition to your regular skincare routine.



Detailed Steps

Use the Medi Nanopen-Pro once a week at night when you won't have much sun exposure the next day

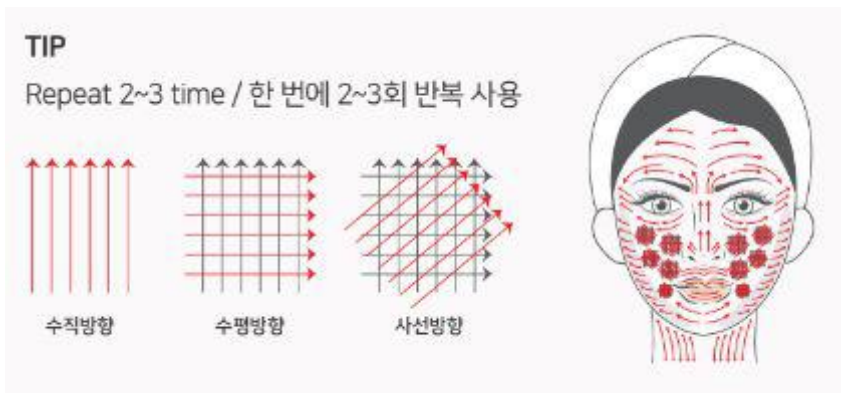
1. Activate the BIOTOC 3X ampoule by pressing down the white button on the top of the cap to release the Astaxanthin solution (stored inside the cap) and shake the bottle to mix well. Remove the cap and replace with the dropper cap. Remember to store the freshly activated ampoule in the refrigerator. Please see the image below for activating the ampoule.



2. Screw a new nanochip, see image below, on the BIOTOC MEDI Medi Nanopen-Pro. Turn the Nanopen on (and off) by firmly pressing the button. The Nanopen has three levels of intensity: low (blue), medium (green) and high (red). To move between the levels, lightly press the button. For your first treatment, use the Nanopen on the lowest setting, as indicated by the blue light.



3. On clean, exfoliated and toned skin, apply 6-8 drops of the activated BIOTOC 3X ampoule to your forehead. Exfoliation is encouraged to maximize the efficacy of the BIOTOC 3X treatment. Massage the ampoule to cover your forehead with clean fingertips, then gently glide the Nanopen in strokes as shown in the diagram below for 1-2 minutes. Then apply 6-8 drops of the ampoule to one of your cheeks and use the Nanopen to cover the area for 1-2 minutes. Then do the same on the other cheek and also the center of your face (nose to chin). You can also apply the ampoule to your lips and use the Nanopen to add more volume. This treatment should take 8-10 minutes in total.



4. Apply a Hydro Lifting Sheet mask to rejuvenate and hydrate skin following the Nanopen treatment. Unfold the mask to apply the fabric side to your face and remove the plastic layer. Leave the mask on for 10-15 minutes and then remove. Then apply BIOTOC Expert Lifting Cream and also your regular moisturizer for additional hydration.

5. Continue to apply the BIOTOC 3X ampoule morning and night in addition to your regular skincare routine. Apply ½ dropper of activated BIOTOC ampoule on your face, massaging into your skin with clean fingertips. If your skin still has redness the next day, apply BIOTOC Expert Lifting Cream, otherwise, resume your regular moisturizing routine. To minimize sun exposure, apply plenty of sunscreen if you go outside and also wear a hat that covers your face, if possible.

6. After a week, you can repeat the BIOTOC 3X treatment with the Nanopen using a new nanochip with each treatment. Continue to apply the BIOTOC 3X ampoule daily morning and night and use the Nanopen on a weekly basis until you have achieved your desired results. Then continue to apply BIOTOC 3X ampoule for maintenance.

Additional Resources

To watch an instructional video and review Frequently Asked Questions, please visit:

<https://dermafirmusa.com/pages/biotoc-for-consumers>