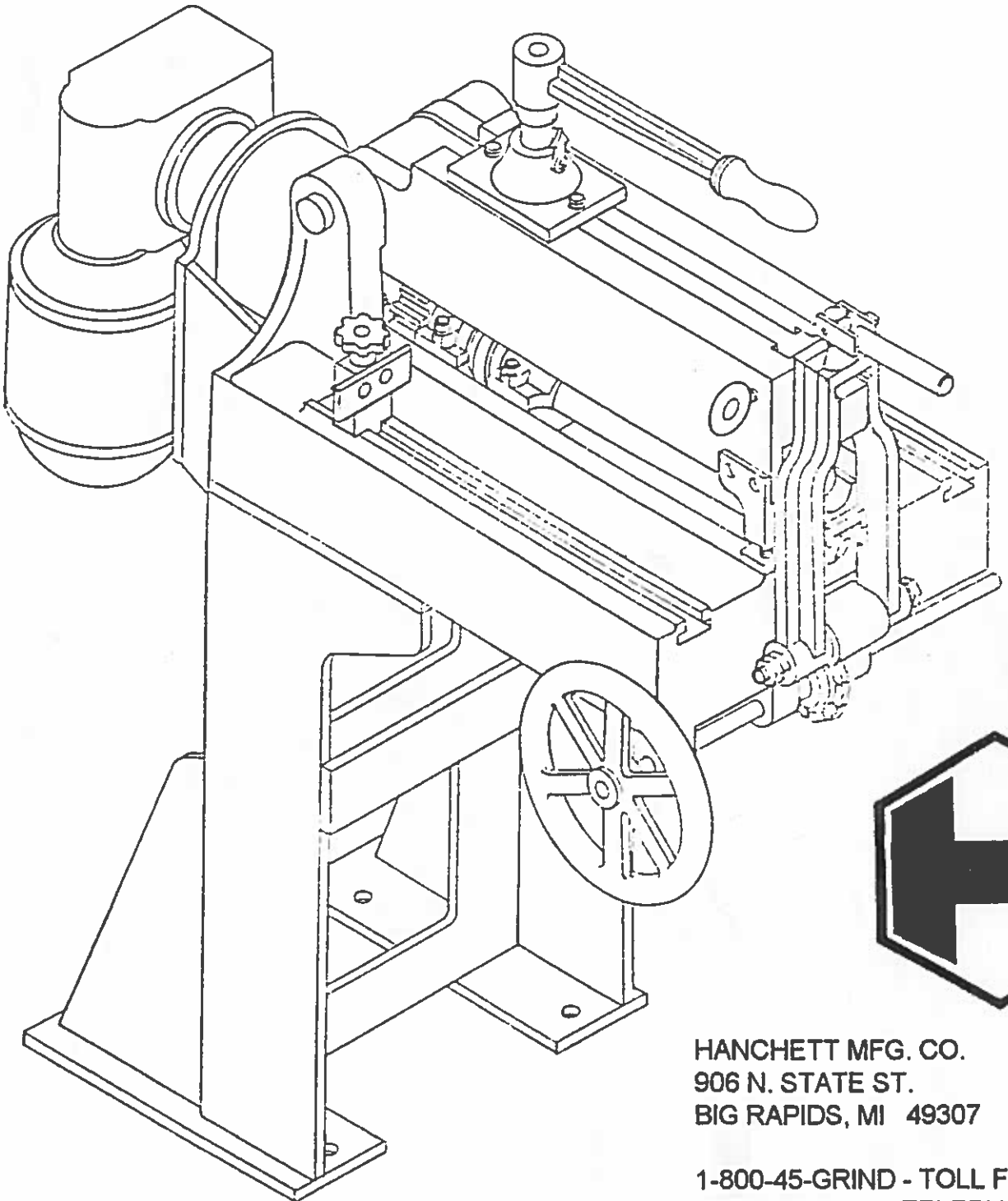


# ILLUSTRATED PARTS

## NO. 109 SAW STRETCHER



HANCHETT MFG. CO.  
906 N. STATE ST.  
BIG RAPIDS, MI 49307

1-800-45-GRIND - TOLL FREE  
(231) 796-7678 - TELEPHONE  
(231) 796-4851 - FAX

# TABLE OF CONTENTS

|   |              |
|---|--------------|
| BASE ASSEMBLY                                     | PAGE 3       |
| BED ASSEMBLY (W/BABBITT BEARINGS)                 | PAGE 4 & 5   |
| TOP SWING ARM ASSEMBLY (W/BABBITT BEARINGS)       | PAGE 6 & 7   |
| BED ASSEMBLY (W/ANTI-FRICTION BEARINGS)           | PAGE 8 & 9   |
| TOP SWING ARM ASSEMBLY (W/ANTI-FRICTION BEARINGS) | PAGE 10 & 11 |

## IMPORTANT

WHEN ORDERING MACHINE PARTS, ALWAYS GIVE THE FOLLOWING INFORMATION:

SERIAL NUMBER OF MACHINE \_\_\_\_\_

MODEL AND SIZE OF MACHINE \_\_\_\_\_

CODE NUMBER OF PARTS \_\_\_\_\_

PART NUMBER \_\_\_\_\_

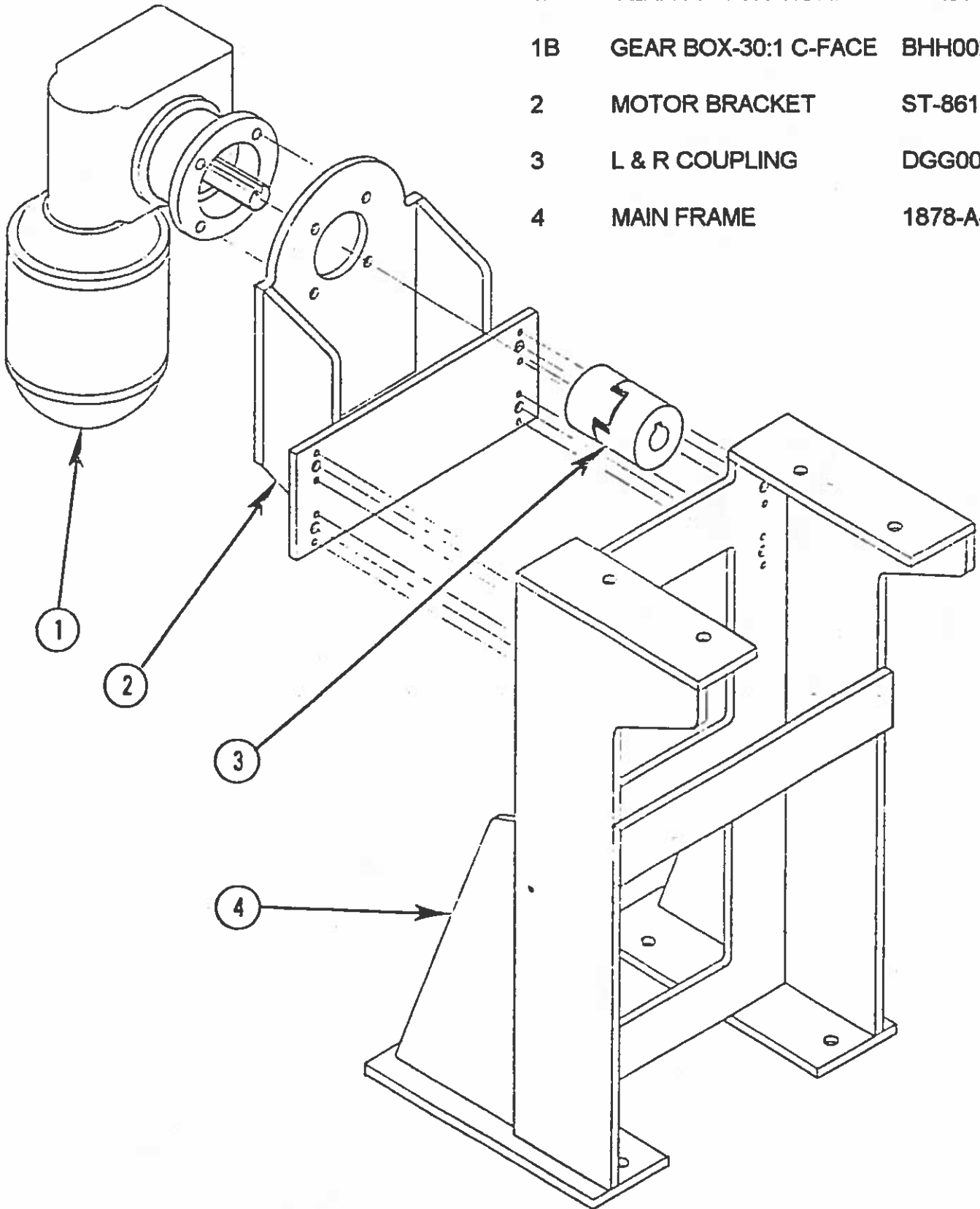
NAME AND DESCRIPTION OF PARTS \_\_\_\_\_

HANCHETT MFG. CO.  
906 N. STATE ST.  
BIG RAPIDS, MI 49307

1-800-45-GRIND - TOLL FREE (1-800-454-7463)  
(231) 796-7678 - TELEPHONE  
(231) 796-4851 - FAX

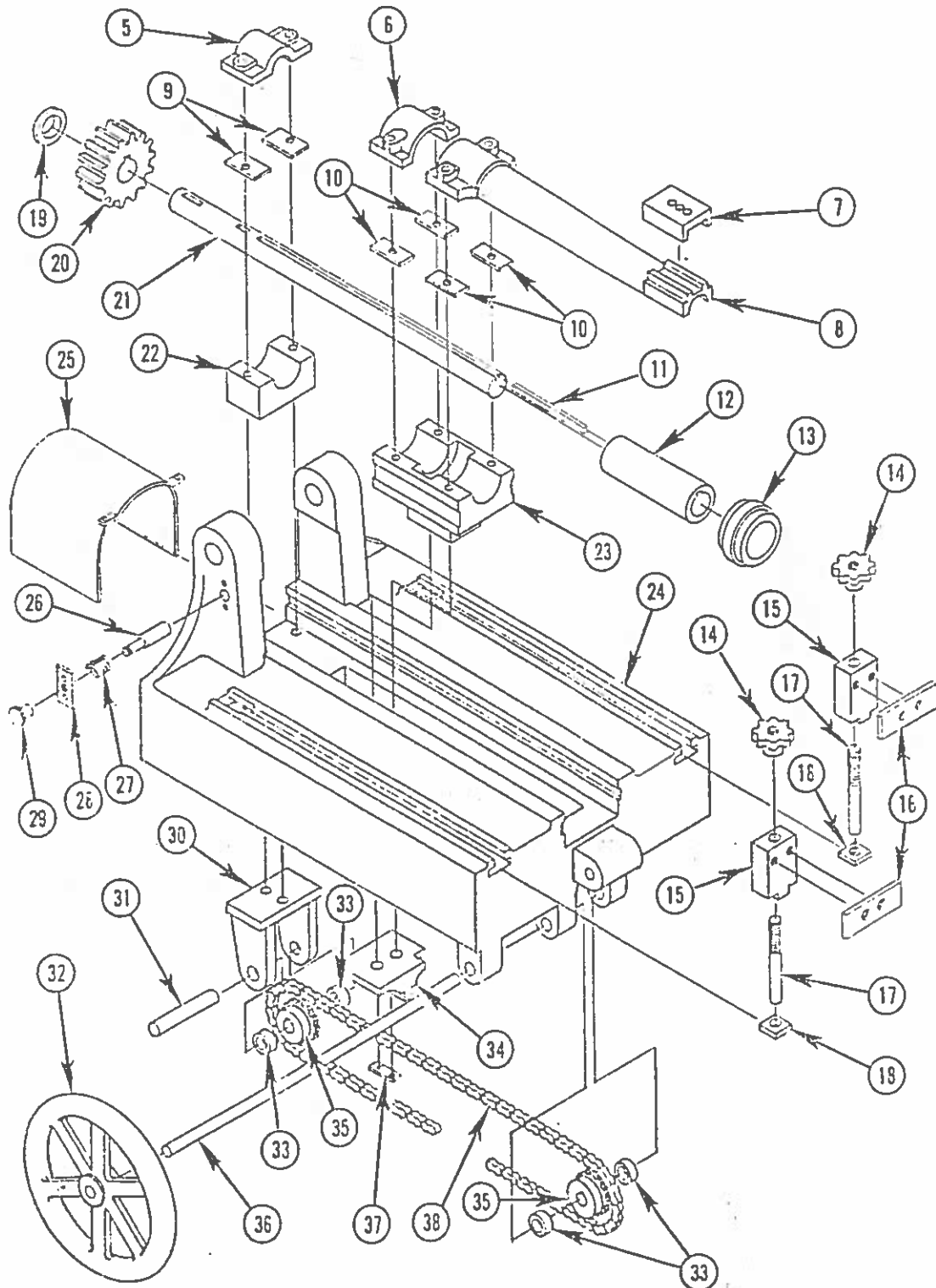
# BASE ASSEMBLY

| <u>CODE NO.</u> | <u>DESCRIPTION</u>   | <u>PART NO.</u> |
|-----------------|----------------------|-----------------|
| 1A              | GEAR MOTOR-1½ HP     | BAA0143K        |
| 1B              | GEAR BOX-30:1 C-FACE | BHH0024M        |
| 2               | MOTOR BRACKET        | ST-8612-1       |
| 3               | L & R COUPLING       | DGG0081R        |
| 4               | MAIN FRAME           | 1878-A-1        |



# BED ASSEMBLY

## WITH BABBITT BEARINGS

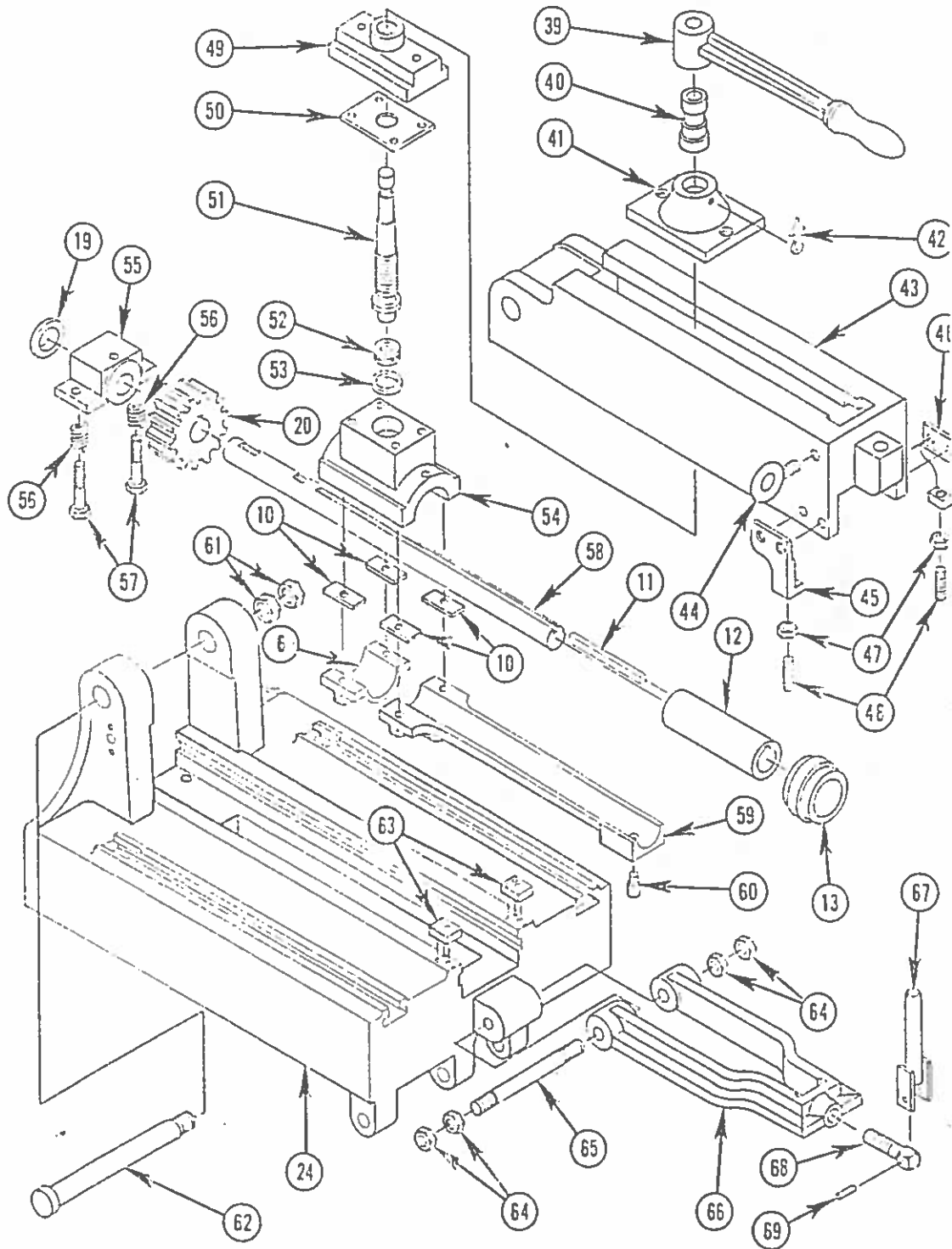


# BED ASSEMBLY

## WITH BABBITT BEARINGS

| <u>CODE NO.</u> | <u>DESCRIPTION</u>                 | <u>PART NO.</u> |                |
|-----------------|------------------------------------|-----------------|----------------|
|                 |                                    | <u>109-14"</u>  | <u>109-18"</u> |
| 5               | LOWER ROLL SHAFT CAP               | 1873            | 1873           |
| 6               | ROLL CAP                           | 1870            | 1870           |
| 7               | LONG CAP PLATE                     | ST-761          | ST-761         |
| 8               | LONG CAP FOR BOTTOM ROLL           | 1854-B          | 1843-B-18      |
| 9               | CAP SHIMS (2 REQ'D)                | ST-8621         | ST-8621        |
| 10              | CAP SHIMS (4 REQ'D)                | ST-8620         | ST-8620        |
| 11              | KEY                                | ST-6012-C       | ST-6012-C      |
| 12              | SLEEVE                             | ST-6012-B       | ST-6012-B      |
| 13              | ROLL                               | ST-6155-A       | ST-6155-A      |
| 14              | HANDKNOB (2 REQ'D)                 | HW-3            | HW-3           |
| 15              | SAW GUIDE BLOCK (2 REQ'D)          | SFH-89          | SFH-89         |
| 16              | SAW GUIDE PLATE (2 REQ'D)          | ST-960          | ST-960         |
| 17              | SCREW FOR GUIDE BLOCK (2 REQ'D)    | ST-743          | ST-743         |
| 18              | SQUARE WASHER                      | ST-743-1/2      | ST-743-1/2     |
| 19              | ROLL SHAFT COLLAR                  | ST-753          | ST-753         |
| 20              | ROLLER SHAFT GEAR                  | ST-6013         | ST-6013        |
| 21              | BOTTOM ROLL SHAFT                  | ST-6018         | ST-6018        |
| 22              | LOWER BLOCK                        | 1893            | 1893           |
| 23              | LOWER BOX FOR ROLLER               | 1862            | 1862           |
| 24              | BED                                | 1852-A-1-1      | 1852-A-1-1     |
| 25              | COUPLING GUARD                     | ST-8496         | ST-8496        |
| 26              | STUD TO HOLD TOP ARM UP            | ST-751          | ST-751-1/2     |
| 27              | SPRING                             | ST-5            | ST-5           |
| 28              | SPRING HOLDER                      | ST-773          | ST-773         |
| 29              | THUMB NUT                          | ST-6048         | ST-6048        |
| 30              | BRACKET                            | 1858-1          | 1858-1         |
| 31              | BRACKET SHAFT                      | ST-750-1        | ST-750-1       |
| 32              | HANDWHEEL                          | SF-51-S         | SF-51-S        |
| 33              | GRAINGER COLLAR (4 REQ'D)          | PAK0004L        | PAK0004L       |
| 34              | BLOCK FOR CHAIN                    | 1872            | 1872           |
| 35              | DIAMOND SPROCKET (2 REQ'D)         | PGG0066G        | PGG0066G       |
| 36              | HANDWHEEL SHAFT                    | ST-6020-1       | ST-6020-1      |
| 37              | WASHER FOR CHAIN                   | ST-7112         | ST-7112        |
| 38              | #41 DIAMOND ROLLER CHAIN-1/2 PITCH | DHH0001W        | DHH0001W       |

# TOP SWING ARM ASSEMBLY WITH BABBITT BEARINGS



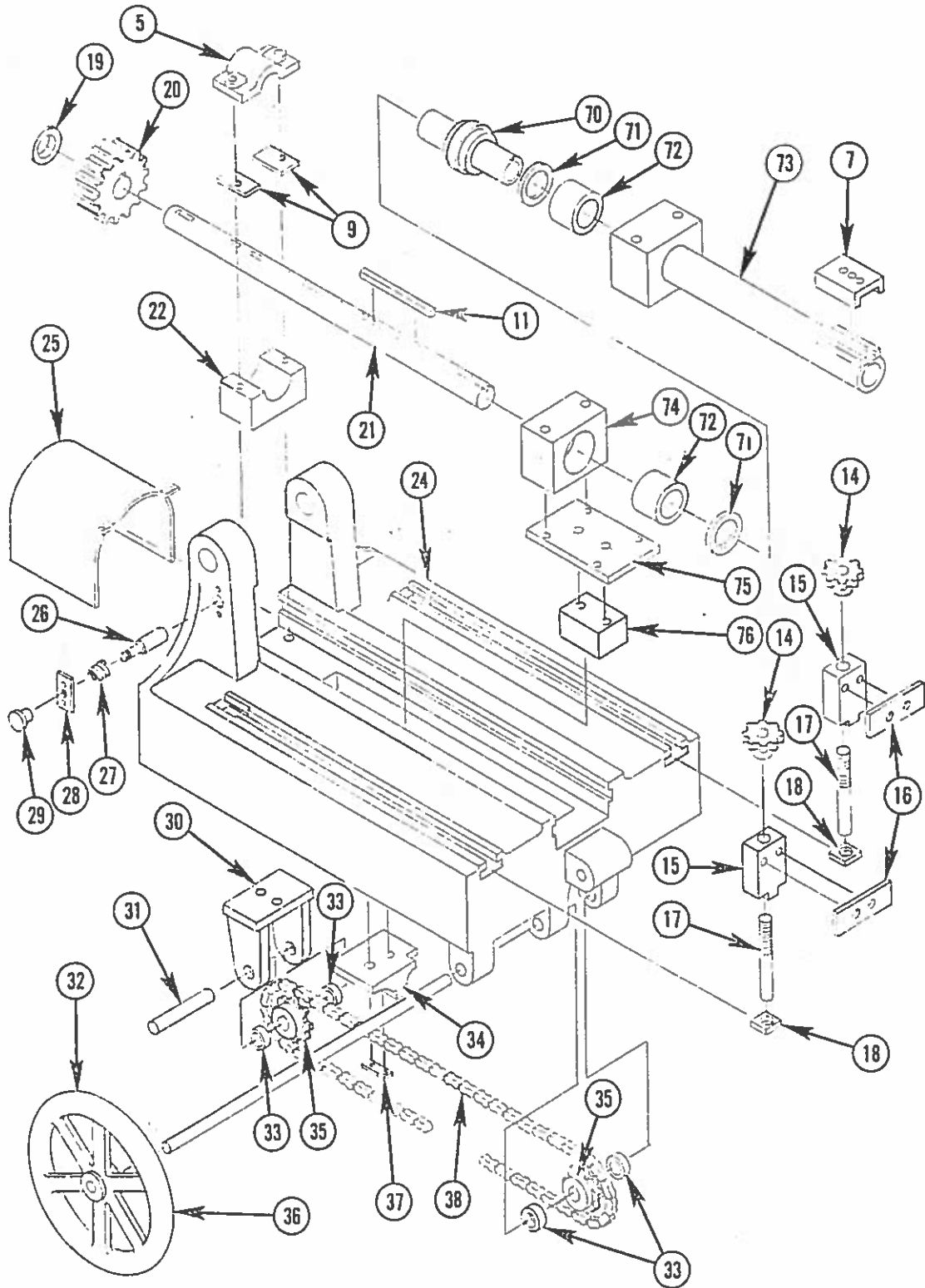
# TOP SWING ARM ASSEMBLY

## WITH BABBITT BEARINGS

| <u>CODE NO.</u> | <u>DESCRIPTION</u>                 | <u>PART NO.</u> |                |
|-----------------|------------------------------------|-----------------|----------------|
|                 |                                    | <u>109-14"</u>  | <u>109-18"</u> |
| 6               | ROLL CAP                           | 1870            | 1870           |
| 10              | CAP SHIMS (2 REQ'D)                | ST-8620         | ST-8620        |
| 11              | KEY                                | ST-6012-C       | ST-6012-C      |
| 12              | SLEEVE                             | ST-6012-B       | ST-6012-B      |
| 13              | ROLL                               | ST-6155-A       | ST-6155-A      |
| 19              | ROLL SHAFT COLLAR                  | ST-753          | ST-753         |
| 20              | ROLL SHAFT GEAR                    | ST-6013         | ST-6013        |
| 24              | BED (REFERENCE)                    | 1852-A-1-1      | 1852-A-1-1     |
| 39              | REGULATING LEVER                   | SF-89           | SF-89          |
| 40              | SLEEVE FOR PRESSURE SCREW          | ST-742          | ST-742         |
| 41              | PRESSURE SCREW CAP                 | 1860            | 1860           |
| 42              | POINTER                            | ST-701          | ST-701         |
| 43              | TOP SWING ARM                      | 1851-14         | 1851-18        |
| 44              | EYE BOLT                           | ST-7116         | ST-7116        |
| 45              | L.H. LEG FOR SWING ARM             | H-805-L         | H-805-L        |
| 46              | R.H. LEG FOR SWING ARM             | H-805-R         | H-805-R        |
| 47              | ½-13 HEX NUT (2 REQ'D)             | PPP0011D        | PPP0011D       |
| 48              | ALIGNING SCREW (2 REQ'D)           | ST-8683         | ST-8683        |
| 49              | SLIDING NUT                        | 1861            | 1861           |
| 50              | PRESSURE SCREW PLATE               | ST-7110         | ST-7110        |
| 51              | PRESSURE SCREW                     | ST-7111         | ST-7111        |
| 52              | SKF THRUST BEARING                 | CDD0028R        | CDD0028R       |
| 53              | SKF ALIGNING WASHER                | CDD0026F        | CDD0026F       |
| 54              | UPPER BOX FOR ROLLER               | 1863-A          | 1863-A         |
| 55              | UPPER ROLLER BEARING               | 1876-A          | 1876-A         |
| 56              | SPRING (2 REQ'D)                   | ST-7            | ST-7           |
| 57              | ½-13 X 2¾ LG HEX HD BOLT (2 REQ'D) | PDD0035Z        | PDD0035Z       |
| 58              | TOP ROLL SHAFT                     | ST-6017         | ST-6017        |
| 59              | LONG CAP FOR TOP ROLL              | 1854-T          | 1854-T-18      |
| 60              | PIN IN LONG CAP                    | ST-754          | ST-754         |
| 61              | ¾-10 HEX NUTS (2 REQ'D)            | PPP0013J        | PPP0013J       |
| 62              | STUD TO HOLD TOP ARM TO BED        | ST-749          | ST-749-1/2     |
| 63              | ALIGNING BLOCK (2 REQ'D)           | ST-8687         | ST-8687        |
| 64              | 5/8-11 HEX NUTS (4 REQ'D)          | PPP0042M        | PPP0042M       |
| 65              | SCREW FOR YOKE                     | ST-736          | ST-736         |
| 66              | YOKE                               | 1855            | 1855           |
| 67              | HANDLE                             | ST-771          | ST-771         |
| 68              | SET SCREW                          | ST-8713         | ST-8713        |
| 69              | 5/16 X 1 3/8 LG. DRIV-LOK PIN      | PAG0039K        | PAG0039K       |

# BED ASSEMBLY

## WITH ANTI-FRICTION BEARINGS



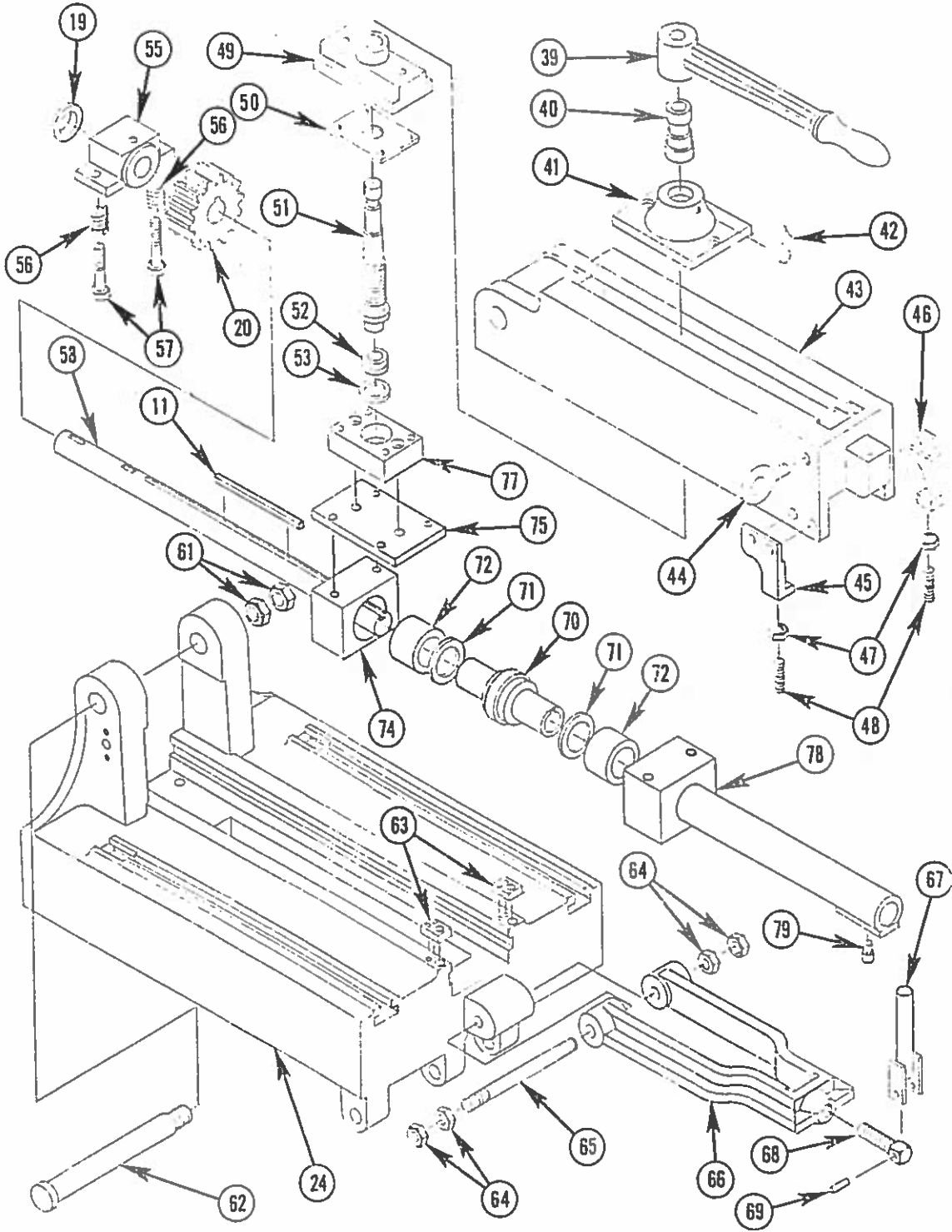


# BED ASSEMBLY

## WITH ANTI-FRICTION BEARINGS

| <u>CODE NO.</u> | <u>DESCRIPTION</u>                 | <u>PART NO.</u> |                |
|-----------------|------------------------------------|-----------------|----------------|
|                 |                                    | <u>109-14"</u>  | <u>109-18"</u> |
| 5               | LOWER ROLL SHAFT CAP               | 1873            | 1873           |
| 7               | LONG CAP PLATE                     | ST-781          | ST-781         |
| 9               | CAP SHIMS (2 REQ'D)                | ST-8612         | ST-8612        |
| 11              | KEY                                | ST-6012-C       | ST-6012-C      |
| 14              | HANDKNOB (2 REQ'D)                 | HW-3            | HW-3           |
| 15              | SAW GUIDE BLOCK (2 REQ'D)          | SFH-87          | SFH-87         |
| 16              | SAW GUIDE PLATE (2 REQ'D)          | ST-960          | ST-960         |
| 17              | SCREW FOR GUIDE BLOCK (2 REQ'D)    | ST-743          | ST-743         |
| 18              | SQUARE WASHER (2 REQ'D)            | ST-743-1/2      | ST-743-1/2     |
| 19              | ROLL SHAFT COLLAR                  | ST-753          | ST-753         |
| 20              | ROLL SHAFT GEAR                    | ST-6013         | ST-6013        |
| 21              | BOTTOM ROLL SHAFT                  | ST-6018         | ST-6018        |
| 22              | LOWER BLOCK                        | 1893            | 1893           |
| 24              | BED                                | 1852-A-1-1      | 1852-A-1-1     |
| 25              | COUPLING GUARD                     | ST-8496         | ST-8496        |
| 26              | STUD TO HOLD TOP ARM UP            | ST-751          | ST-751-1/2     |
| 27              | SPRING                             | ST-5            | ST-5           |
| 28              | SPRING HOLDER                      | ST-733          | ST-733         |
| 29              | THUMB NUT                          | MCC0049R        | MCC0049R       |
| 30              | BRACKET                            | 1858-1          | 1858-1         |
| 31              | BRACKET SHAFT                      | ST-750-1        | ST-750-1       |
| 32              | HANDWHEEL                          | SF-51-2         | SF-51-2        |
| 33              | GRAINGER COLLAR (4 REQ'D)          | PAK0004L        | PAK0004L       |
| 34              | BLOCK FOR CHAIN                    | 1872            | 1872           |
| 35              | DIAMOND SPROCKET (2 REQ'D)         | DFF0013K        | DFF0013K       |
| 36              | HANDWHEEL SHAFT                    | ST-6020-1       | ST-6020-1      |
| 37              | WASHER FOR CHAIN                   | ST-7112         | ST-7112        |
| 38              | #41 DIAMOND ROLLER CHAIN-1/2 PITCH | DHH0001W        | DHH0001W       |
| 70              | ROLLER                             | ST-8681         | ST-8681        |
| 71              | FIBER WASHER (2 REQ'D)             | ST-8677         | ST-8677        |
| 72              | MC GILL GAGEROL BEARINGS (2 REQ'D) | CCC0023Z        | CCC0023Z       |
| 73              | FRONT BEARING HOUSING              | ST-8679         | ST-8673        |
| 74              | REAR HOUSING                       | ST-8671         | ST-8671        |
| 75              | BEARING PLATE                      | ST-8670         | ST-8670        |
| 76              | LOWER BEARING BLOCK                | ST-8669         | ST-8669        |

# TOP SWING ARM ASSEMBLY WITH ANTI-FRICTION BEARINGS



# TOP SWING ARM ASSEMBLY

## WITH ANTI-FRICTION BEARINGS

| <u>CODE NO.</u> | <u>DESCRIPTION</u>                 | <u>PART NO.</u> |                |
|-----------------|------------------------------------|-----------------|----------------|
|                 |                                    | <u>109-14"</u>  | <u>109-18"</u> |
| 11              | KEY                                | ST-6012-C       | ST-6012-C      |
| 19              | ROLL SHAFT COLLAR                  | ST-753          | ST-753         |
| 20              | ROLL SHAFT GEAR                    | ST-6013         | ST-6013        |
| 24              | BED (REFERENCE)                    | 1852-A-1-1      | 1852-A-1-1     |
| 39              | REGULATING LEVER                   | SF-89           | SF-89          |
| 40              | SLEEVE FOR PRESSURE SCREW          | ST-742          | ST-742         |
| 41              | PRESSURE SCREW CAP                 | 1860            | 1860           |
| 42              | POINTER                            | ST-701          | ST-701         |
| 43              | TOP SWING ARM                      | 1851-14         | 1851-18        |
| 44              | EYE BOLT                           | ST-7116         | ST-7116        |
| 45              | L.H. LEG FOR SWING ARM             | H-805-L         | H-805-L        |
| 46              | R.H. LEG FOR SWING ARM             | H-805-R         | H-805-R        |
| 47              | ½-13 HEX NUT (2 REQ'D)             | PPP0011D        | PPP0011D       |
| 48              | ALIGNING SCREW (2 REQ'D)           | ST-8683         | ST-8683        |
| 49              | SLIDING NUT                        | 1861            | 1861           |
| 50              | PRESSURE SCREW PLATE               | ST-7110         | ST-7110        |
| 51              | PRESSURE SCREW                     | ST-7111         | ST-7111        |
| 52              | SKF THRUST BEARING                 | CDD0026F        | CDD0026F       |
| 53              | SKF ALIGNING WASHER                | CDD0028R        | CDD0028R       |
| 55              | UPPER ROLLER BEARING               | 1876-A          | 1876-A         |
| 56              | SPRING (2 REQ'D)                   | ST-7            | ST-7           |
| 57              | ½-13 X 2¾ LG HEX HD BOLT (2 REQ'D) | PDD0035Z        | PDD0035Z       |
| 58              | TOP ROLL SHAFT                     | ST-6017         | ST-7117        |
| 61              | ¾-10 HEX NUT (2 REQ'D)             | PPP0013J        | PPP0013J       |
| 62              | STUD TO HOLD TOP ARM TO BED        | ST-749          | ST-749-1/2     |
| 63              | ALIGNING BLOCK (2 REQ'D)           | ST-8687         | ST-8687        |
| 64              | 5/8-11 HEX NUT (4 REQ'D)           | PPP0042M        | PPP0042M       |
| 65              | SCREW FOR YOKE                     | ST-736          | ST-736         |
| 66              | YOKE                               | 1855            | 1855           |
| 67              | HANDLE                             | ST-771          | ST-771         |
| 68              | SET SCREW                          | ST-8713         | ST-8713        |
| 69              | 5/16 X 1 3/8 LG. DRIV-LOK PIN      | PAG0039K        | PAG0039K       |
| 70              | ROLLER                             | ST-8681         | ST-8681        |
| 71              | FIBER WASHER (2 REQ'D)             | ST-8677         | ST-8677        |
| 72              | MC GILL GAGEROL BRG (2 REQ'D)      | CCC0023Z        | CCC0023Z       |
| 75              | BEARING PLATE                      | ST-8670         | ST-8670        |
| 77              | UPPER BEARING BLOCK                | ST-8668         | ST-8668        |
| 78              | FRONT BEARING HOUSING              | ST-8678         | ST-8672        |
| 79              | PIN FOR FRONT BEARING HOUSING      | ST-8624         | ST-8624        |

### LUBRICATION AND MAINTENANCE

Standard gearhead motor drive should be checked for oil level before start-up and then at six month intervals. Pressure screw and upper slide assembly need light oiling at weekly intervals if machine is in daily use. Anti-friction bearings on the rolls should be given a small amount of grease at the same intervals, and the sliding saddle on which the saw holder is mounted should be wiped and oiled lightly as required to maintain easy movement.

Maintenance is at a minimum on this machine and will normally involve only a periodic regrind of the rolls, usually at yearly intervals unless the machine is in constant use. Regrinding should not be attempted in the field. The rolls should be returned to the factory where they can be restored to original specifications and matched perfectly on both crown and diameter.